



**CUSHMAN &
WAKEFIELD**

25 Royal Crest Court
Markham, Ontario

6,650 SF



PROPERTY HIGHLIGHTS

LOCATION:	Located southeast of the Warden Avenue and Highway 407 interchange
AVAILABLE SPACE:	6,650 sf
NET RENTAL RATE:	\$12.00 psf
T.M.I.:	\$12.50 psf/annum (2023)
PARKING:	4/1000 sf leased
OCCUPANCY:	June 1, 2023

FEATURES

- Adjacent to Downtown Markham, close to hotels, restaurants, and shopping
- Possible building signage onto Warden Avenue
- Leaseholds in excellent condition
- Corner unit with lots of natural light
- 2 large B/R full glass height walls



ZARKO STOJANOVIC**

VICE PRESIDENT

D: 416.756.5440 | M: 416.219.0716

zarko.stojanovic@cushwake.com

CUSHMAN & WAKEFIELD ULC, BROKERAGE

1100-3100 Steeles Avenue East

Markham, ON L3R 8T3

www.cushmanwakefield.com

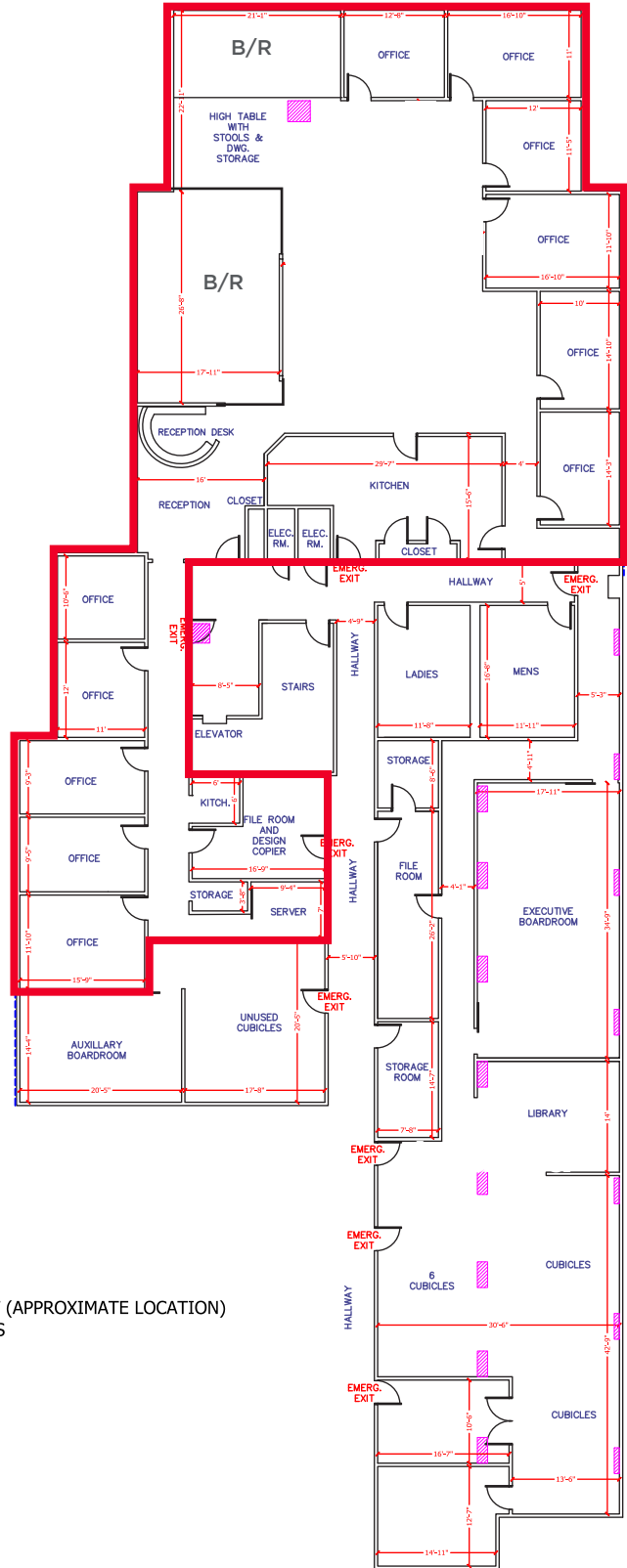
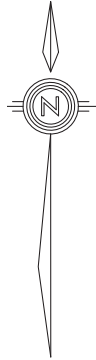
©2023 Cushman & Wakefield ULC, Brokerage. All rights reserved. The information contained in this communication is strictly confidential. This information has been obtained from sources believed to be reliable but has not been verified. NO WARRANTY OR REPRESENTATION, EXPRESS OR IMPLIED, IS MADE AS TO THE CONDITION OF THE PROPERTY (OR PROPERTIES) REFERENCED HEREIN OR AS TO THE ACCURACY OR COMPLETENESS OF THE INFORMATION CONTAINED HEREIN, AND SAME IS SUBMITTED SUBJECT TO ERRORS, OMISSIONS, CHANGE OF PRICE, RENTAL OR OTHER CONDITIONS, WITHDRAWAL WITHOUT NOTICE, AND TO ANY SPECIAL LISTING CONDITIONS IMPOSED BY THE PROPERTY OWNER(S). ANY PROJECTIONS, OPINIONS OR ESTIMATES ARE SUBJECT TO UNCERTAINTY AND DO NOT SIGNIFY CURRENT OR FUTURE PROPERTY PERFORMANCE.



FLOOR PLAN

Suite

Available - 6,650 sf



ZARKO STOJANOVIC**

VICE PRESIDENT

D: 416.756.5440 | M: 416.219.0716

zarko.stojanovic@cushwake.com

LEGEND

- SKYLIGHT (APPROXIMATE LOCATION)
- WINDOWS

CUSHMAN & WAKEFIELD ULC, BROKERAGE

1100-3100 Steeles Avenue East

Markham, ON L3R 8T3

www.cushmanwakefield.com