



RETAIL FOR LEASE

700 BAY STREET, TORONTO

Cushman & Wakefield Urban Retail Services

This boutique 750 square foot retail opportunity is located in the heart of the vibrant and rapidly changing intersection of Bay Street & Gerrard Street West. Located on the bustling Bay Street corridor, and steps to Ryerson University, the Eaton Centre and some of Toronto's largest hospitals. In proximity to significant mixed-use developments and benefiting from ample residential and office density, 700 Bay Street is suitable for a variety of retail uses.





HIGHLIGHTS

- Ample customer parking in area
- Nearby some of the largest hospitals in the city
- Heavy pedestrian and vehicle traffic
- Steps to public transportation
- Strong cotenants in area including Starbucks, Shoppers Drug Mart, Tim Hortons and Barbarian's Steakhouse

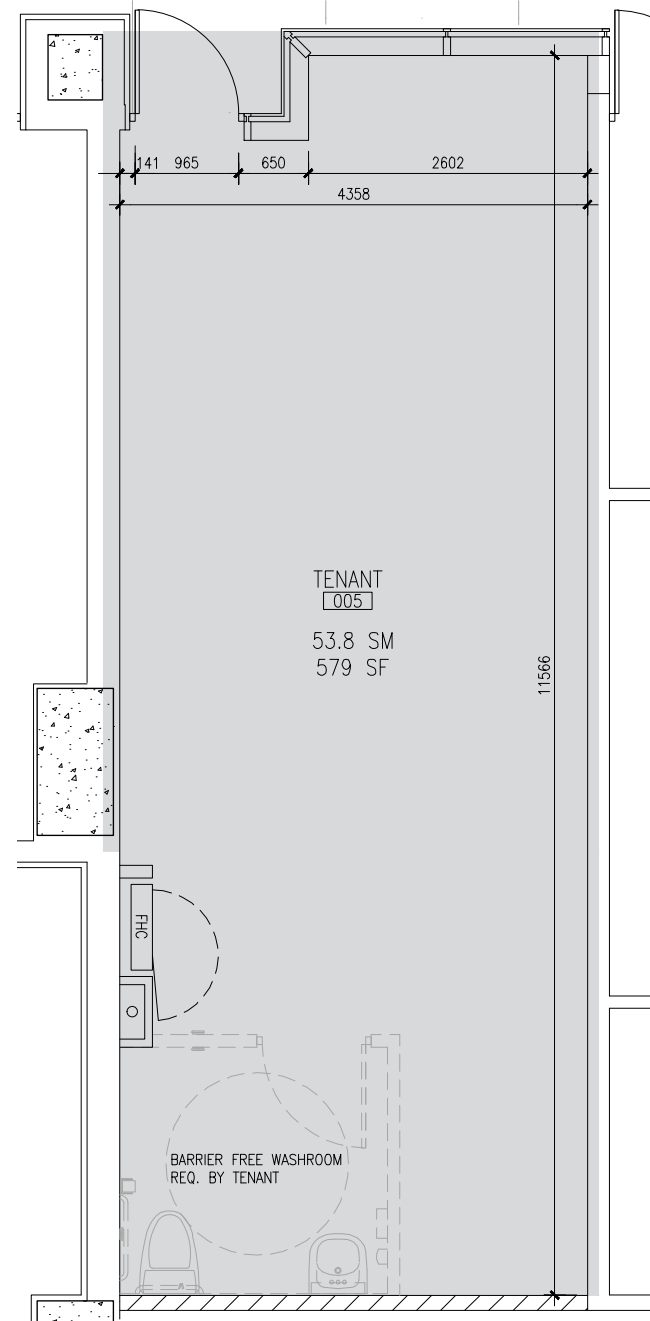
DETAILS

NET ASKING RENT	Negotiable
ADDITIONAL RENT	\$16.30 PSF (est. 2017)
OCCUPANCY	Immediate
TERM	10 years
AVAILABLE SPACE	Ground Floor: 579 SF

FLOOR PLAN

GROUND FLOOR

579 SF



CONTACT



Cushman & Wakefield Ltd., Brokerage
161 Bay Street, Suite 1500
P.O. Box 602 | Toronto, ON M5J 2S1
www.cushmanwakefield.com

GRAHAM SMITH*

Vice President
416 205 9222 ext 225
graham.smith@cushwake.com

BRANDON GORMAN*

Vice President
416 205 9222 ext 239
brandon.gorman@cushwake.com

JONATHAN DIXON

Sales Representative
416 205 9222 ext 256
jonathan.dixon@cushwake.com

CARMEN SIEGEL

Sales Representative
416 205 9222 ext 230
carmen.siegel@cushwake.com

Cushman & Wakefield Ltd., Brokerage

No warranty or representation, expressed or implied, is made as to the accuracy of the information contained herein, and same is submitted subject to errors, omissions, change of price, rental or other conditions, withdrawal without notice, and to any specific listing condition, imposed by our principals.

* **Sales Representative**