

PLYMOUTH TECH PARK I

5005 Cheshire Lane | Plymouth | MN 55446

FOR LEASE
13,701 SF



PROPERTY INFORMATION

PROPERTY HIGHLIGHTS

- 26,186 SF building
- End cap with excellent glassline
- 1 dock door, 1 drive-in
- Close proximity to amenities including restaurants and hotels
- Excellent access to Highway 494 and Highway 55
- Available immediately

BUILDING FEATURES

BUILDING AREA:

3,612 SF office
7,692 SF tech
2,299 SF warehouse
98 SF bldg m/e
13,701 SF total

YEAR BUILT:

1999

LOADING:

1 dock door
1 drive-in door

CLEAR HEIGHT:

14'

POWER:

800 amps
3 phase

LEASE RATES:

\$13.00 psf office
\$7.00 psf warehouse

RATES:

NEGOTIABLE

TAX & CAM:

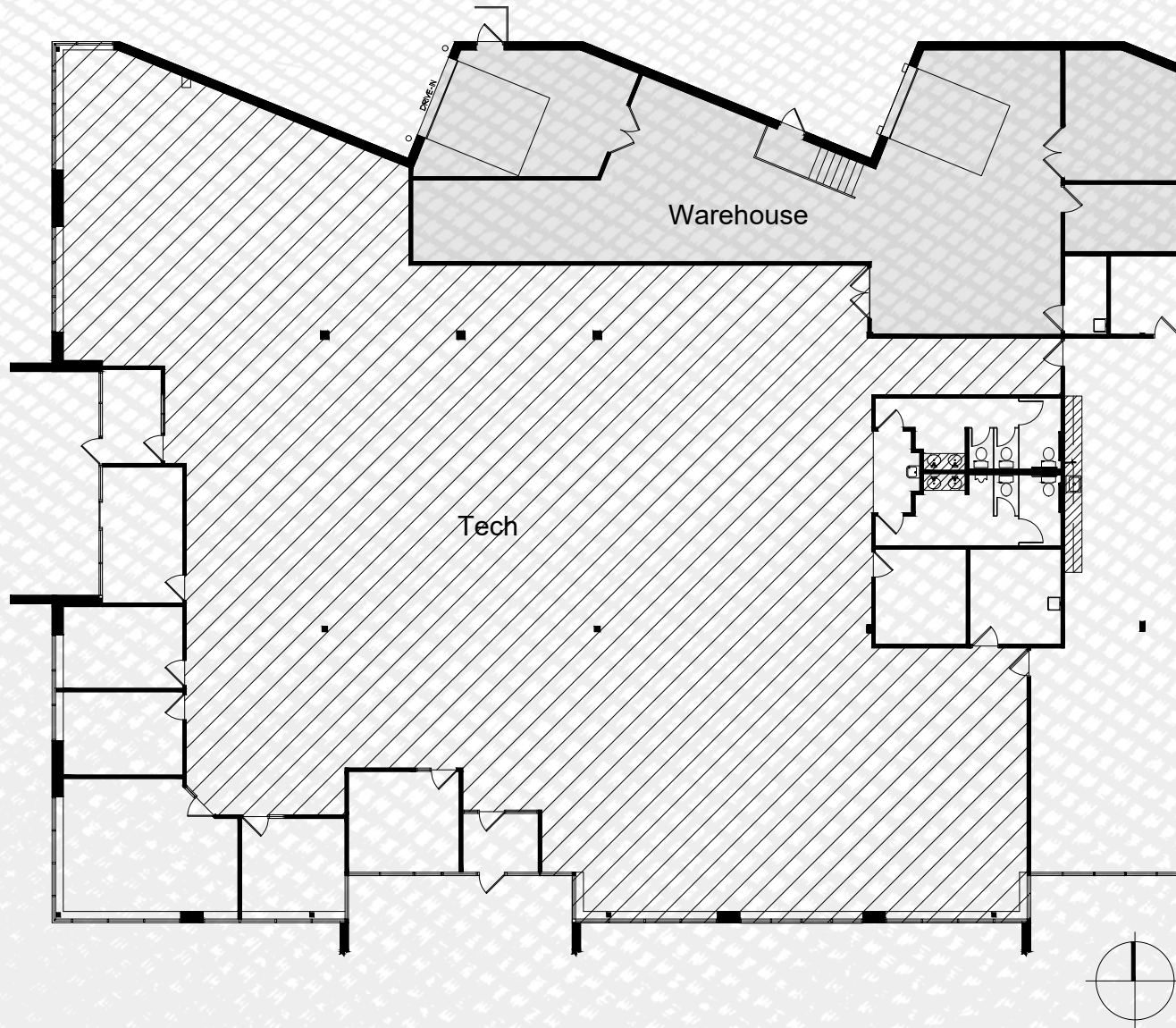
\$2.41 CAM

\$4.35 TAX

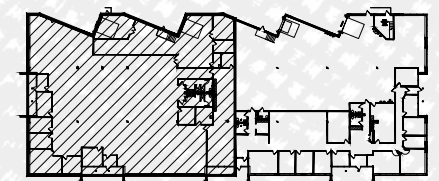
\$6.76 TOTAL PSF



FLOOR PLAN

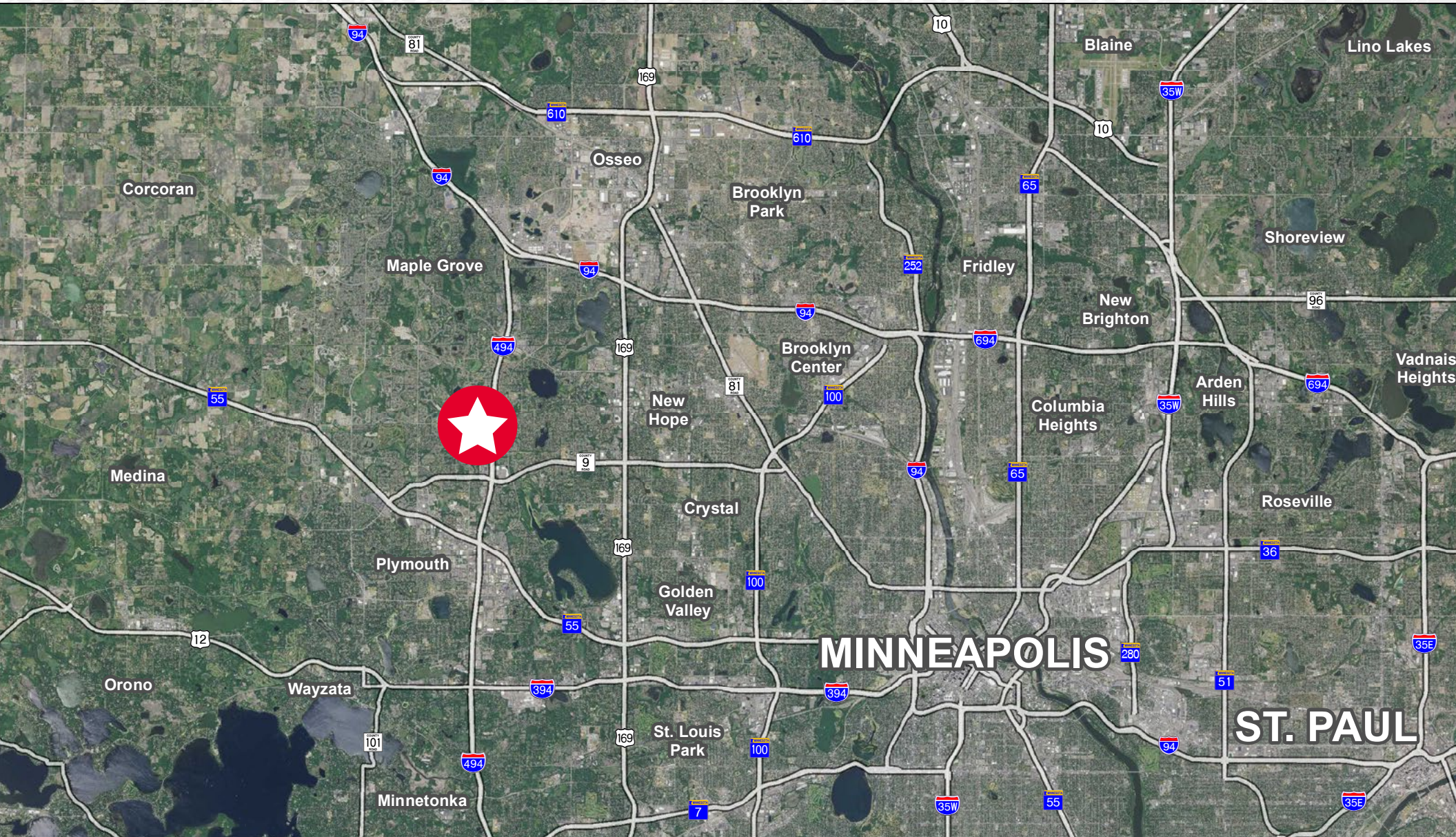


Square Footage Summary	
Office	3,612 SF
Tech	7,692 SF
Warehouse	2,299 SF
Bldg M/E	98 SF
Total	13,701 RSF



Key Plan - 1st Floor

LOCATION MAP



FOR MORE INFORMATION, PLEASE CONTACT:

Bruce Hoberman
Senior Advisor
+1 952 820 8775
bruce.hoberman@cushwake.com

©2024 Cushman & Wakefield. All rights reserved. The information contained in this communication is strictly confidential. This information has been obtained from sources believed to be reliable but has not been verified. NO WARRANTY OR REPRESENTATION, EXPRESS OR IMPLIED, IS MADE AS TO THE CONDITION OF THE PROPERTY (OR PROPERTIES) REFERENCED HEREIN OR AS TO THE ACCURACY OR COMPLETENESS OF THE INFORMATION CONTAINED HEREIN, AND SAME IS SUBMITTED SUBJECT TO ERRORS, OMISSIONS, CHANGE OF PRICE, RENTAL OR OTHER CONDITIONS, WITHDRAWAL WITHOUT NOTICE, AND TO ANY SPECIAL LISTING CONDITIONS IMPOSED BY THE PROPERTY OWNER(S). ANY PROJECTIONS, OPINIONS OR ESTIMATES ARE SUBJECT TO UNCERTAINTY AND DO NOT SIGNIFY CURRENT OR FUTURE PROPERTY PERFORMANCE.

