

# 5005

VETERANS MEMORIAL HIGHWAY

Holbrook, NY

FOR SUBLEASE ± 1,500 - 4,500 SF

 CUSHMAN &  
WAKEFIELD





# 5005

VETERANS MEMORIAL HIGHWAY

Holbrook, NY



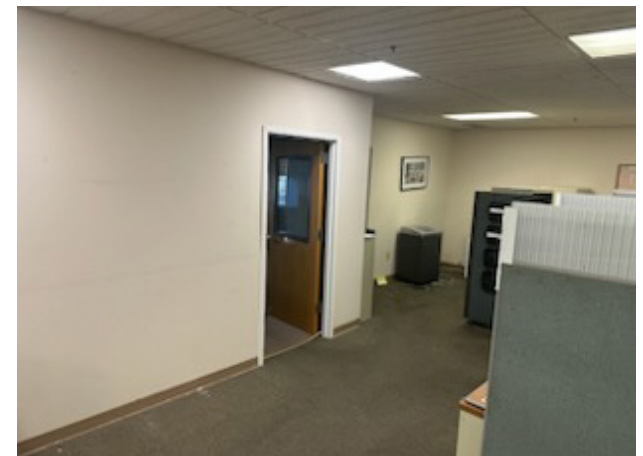
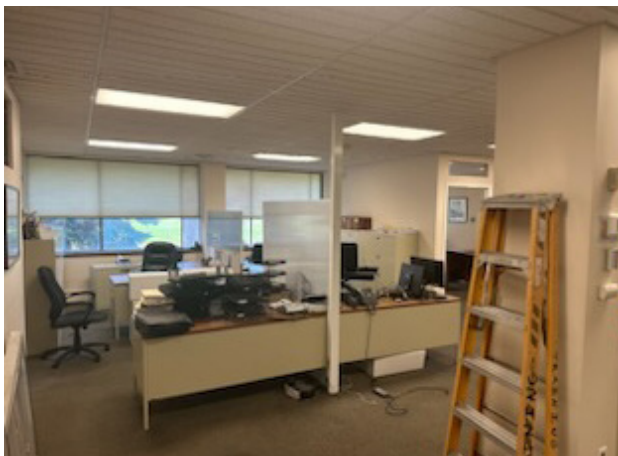
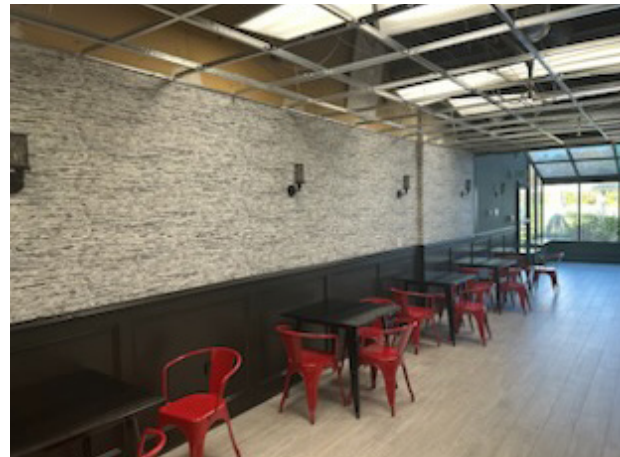
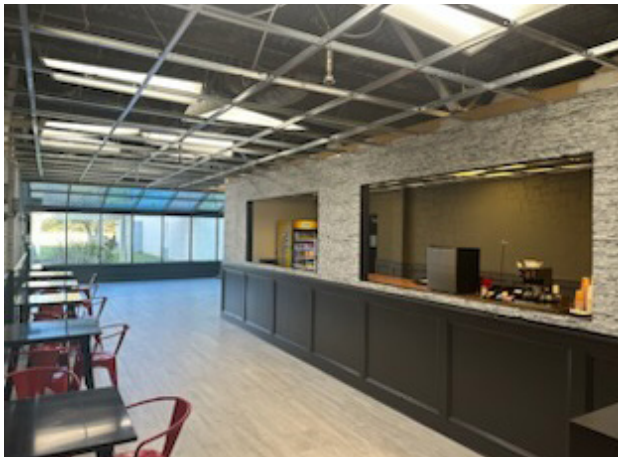
## PROPERTY HIGHLIGHTS

- High Density Sprinkler System
- Cummins 800 KW Diesel Generator
- IDA Tax Abatement Available For Qualified User
- Employee Cafe On-Site
- Rent Negotiable

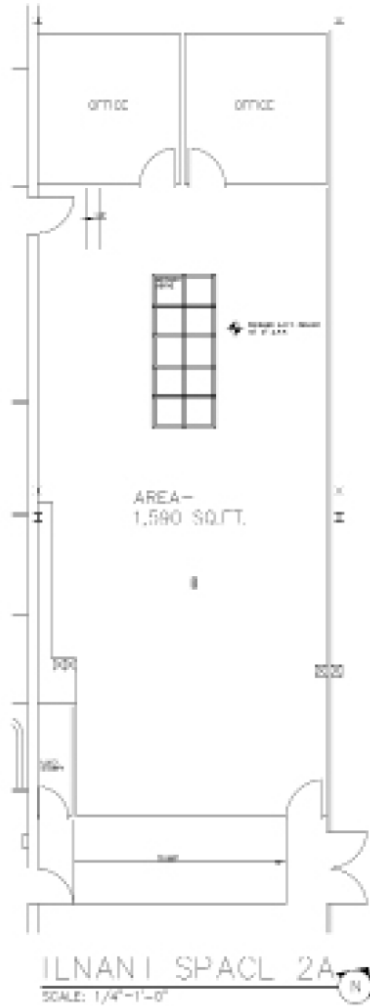
## AVAILABILITIES

- Area 1: 1,590 SF
- Area 2: 4,450 SF

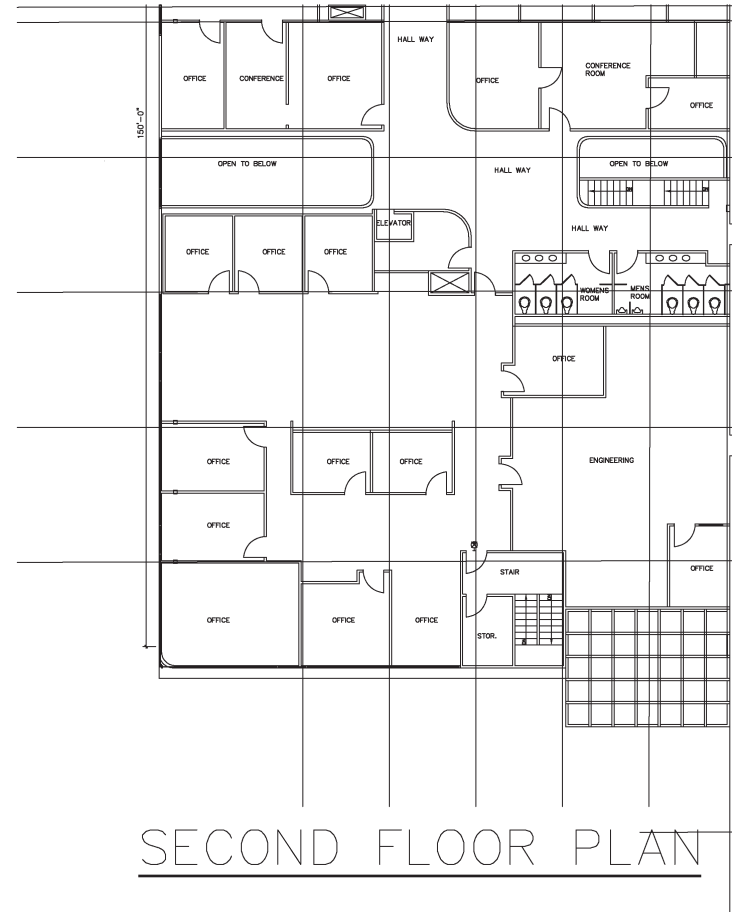




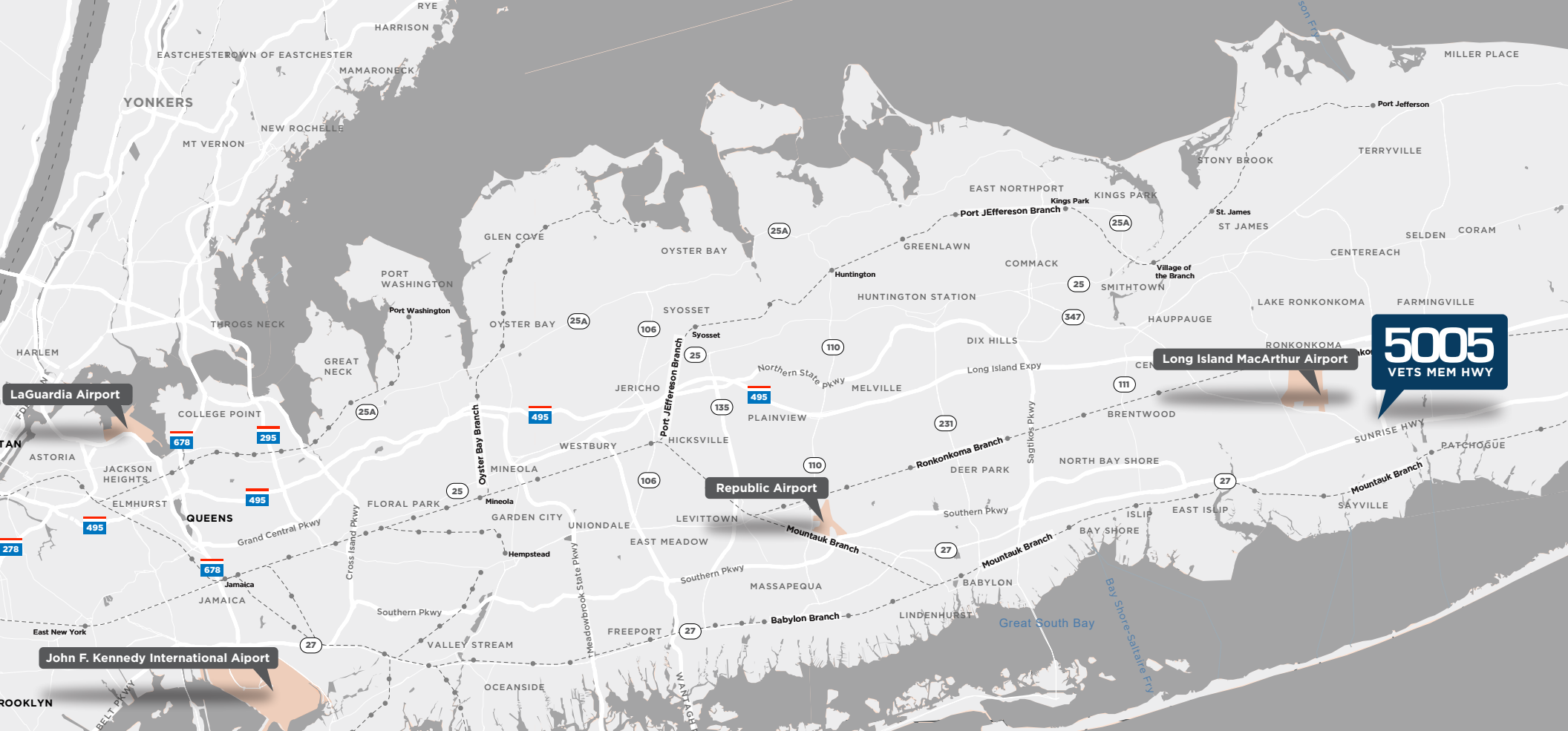
# FLOOR PLANS



**AREA A | 1,590 SF**



**AREA B | 4,450 SF**



**5005**  
VETS MEM HWY

**FOR MORE INFO,  
PLEASE CONTACT:**

**ROB KUPPERSMITH**

D: +1 631 425 1220

O: +1 631 425 1200

Rob.Kuppersmith@cushwake.com

**HAL LIVINGSTON**

D: +1 631 270 3043

Hal.Livingston@cushwake.com

©2023 Cushman & Wakefield. All rights reserved. The information contained in this communication is strictly confidential. This information has been obtained from sources believed to be reliable but has not been verified. No warranty or representation, express or implied, is made as to the condition of the property (or properties) referenced herein or as to the accuracy or completeness of the information contained herein, and same is submitted subject to errors, omissions, change of price, rental or other conditions, withdrawal without notice, and to any special listing conditions imposed by the property owner(s). Any projections, opinions or estimates are subject to uncertainty and do not signify current or future property performance.

