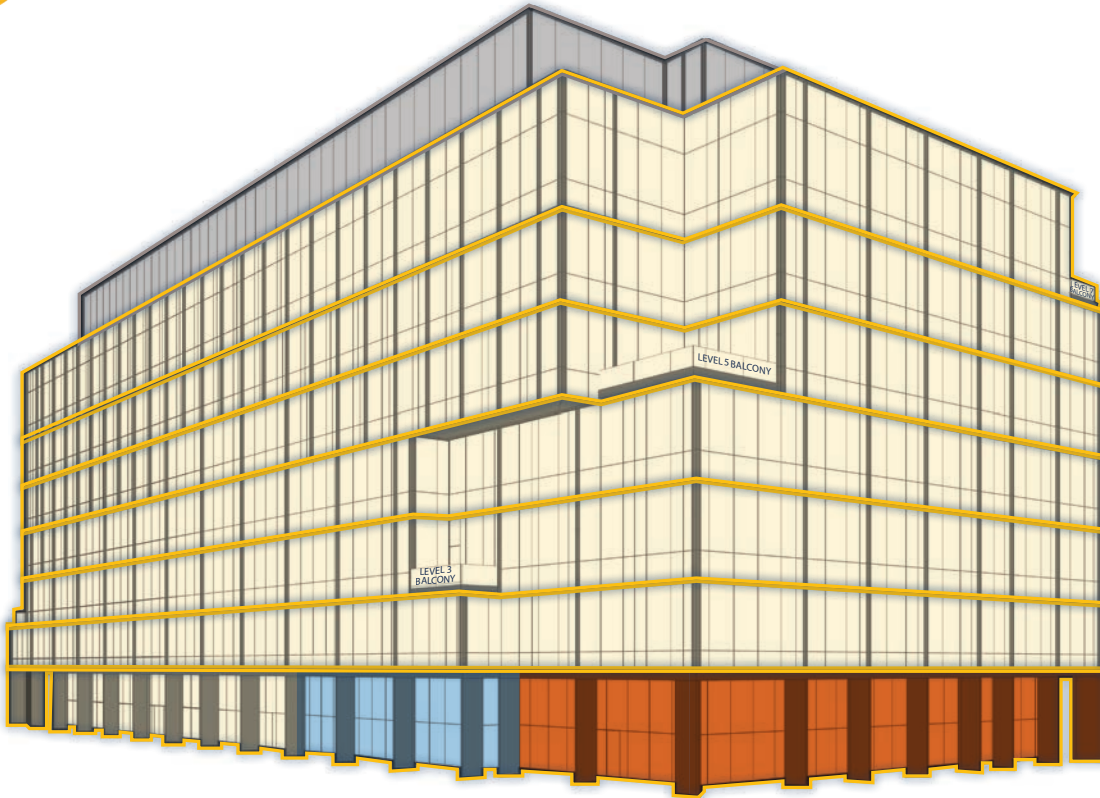





AGGIE  
SQUARE

±233,000 Building SF  
7 Stories  
36,000 SF Avg. Floor Plate  
14'6" Slab -to Slab



-  Retail
-  Common Space
-  Available Space

For more information, please contact:

**Ron Thomas**

Executive Managing Director  
+1 916 288 4801  
ron.thomas@cushwake.com  
LIC #01193241

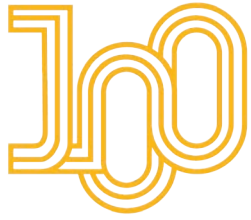
**Kris Kalmbach**

Managing Director  
+1 916 288 4421  
kris.kalmbach@cushwake.com  
LIC #01436668

**Bruce Hohenhaus**

Executive Director  
+ 916 288 4804  
bruce.hohenhaus@cushwake.com  
LIC #00677545





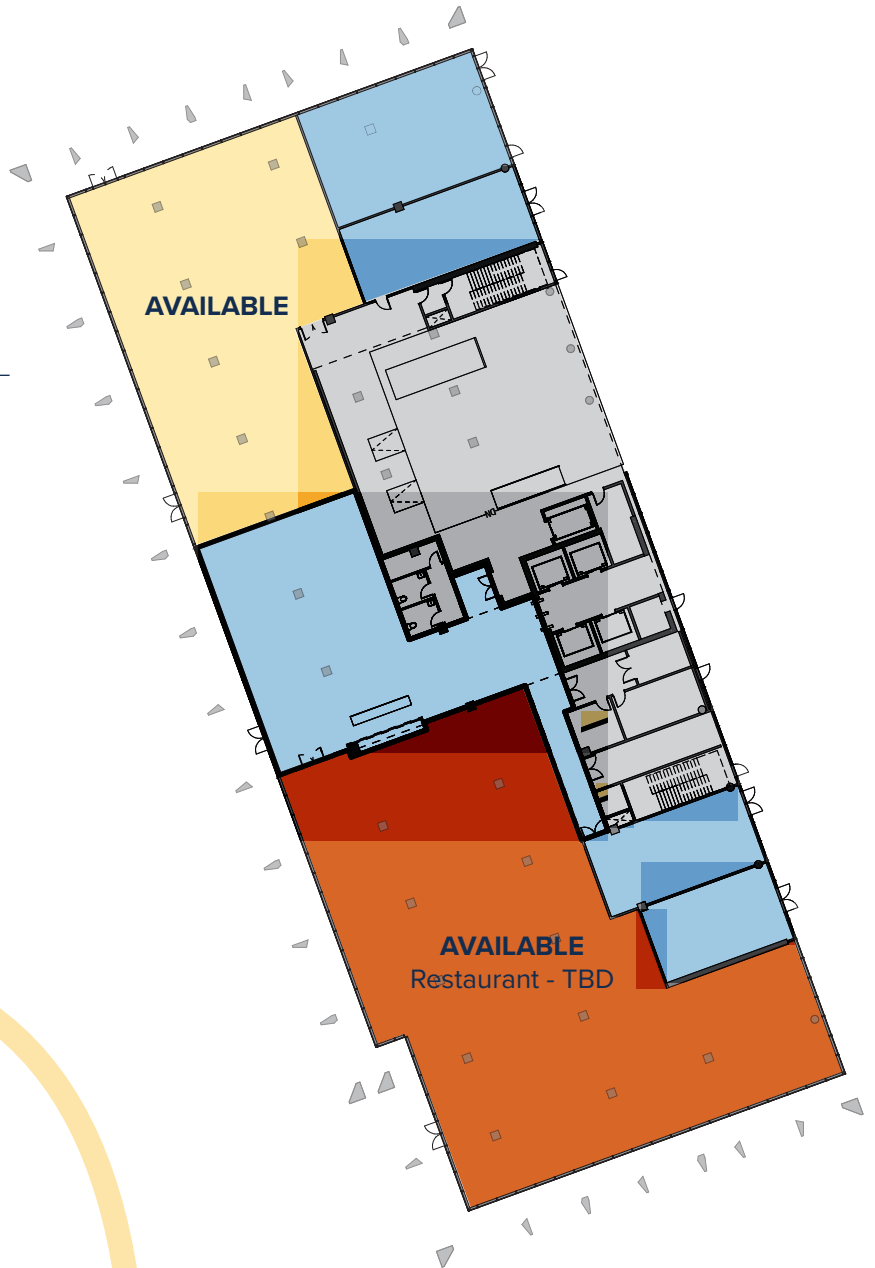
AGGIE  
SQUARE

# Level One

±30,188 RSF

OFFICE/LAB SPACE AVAILABLE

- Retail
- Common Space
- Available Space



For more information, please contact:

**Ron Thomas**

Executive Managing Director  
+1 916 288 4801  
ron.thomas@cushwake.com  
LIC #01193241

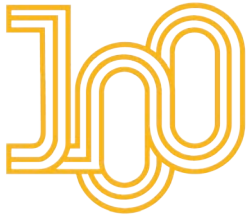
**Kris Kalmbach**

Managing Director  
+1 916 288 4421  
kris.kalmbach@cushwake.com  
LIC #01436668

**Bruce Hohenhaus**

Executive Director  
+ 916 288 4804  
bruce.hohenhaus@cushwake.com  
LIC #00677545





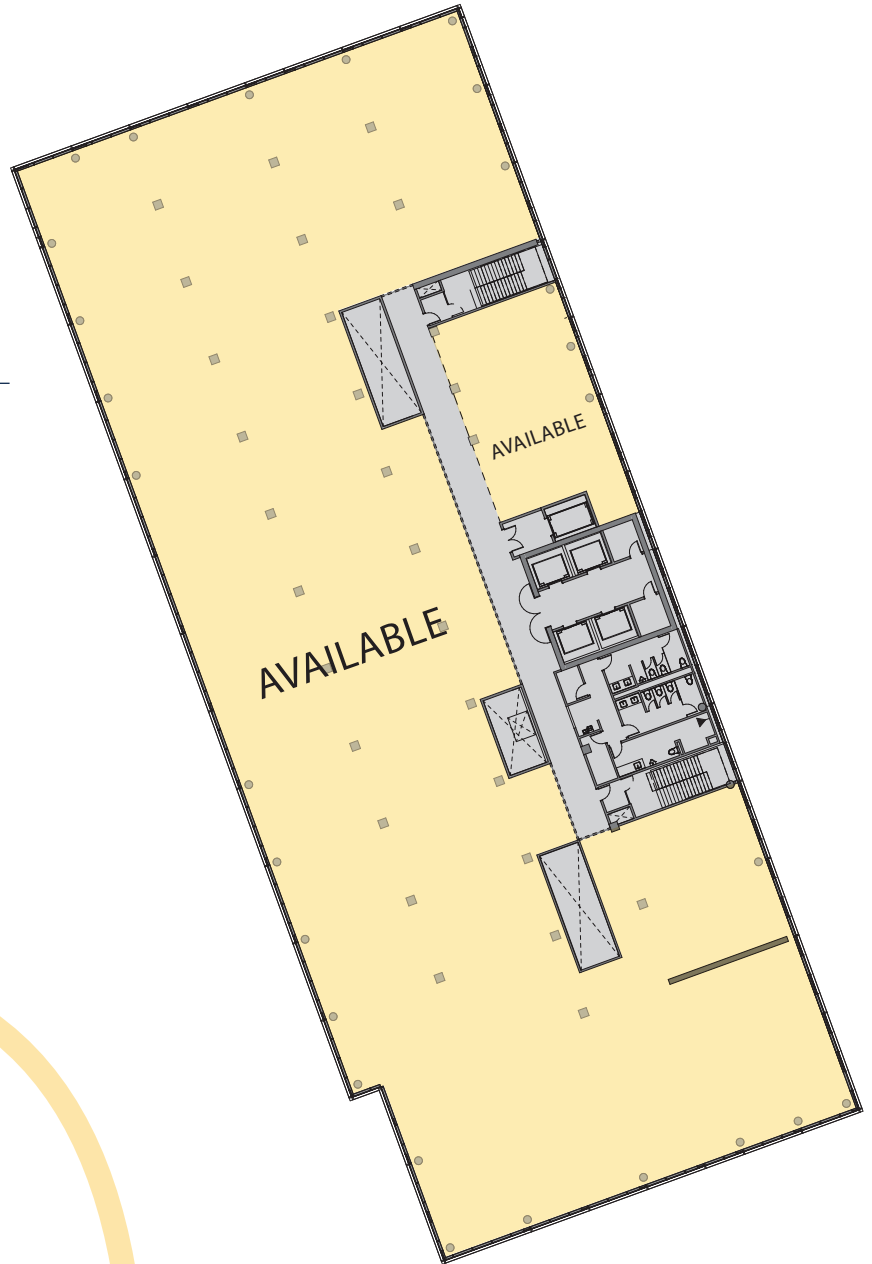
AGGIE  
SQUARE

## Level Two

±33,263 RSF

OFFICE/LAB SPACE AVAILABLE

-  Retail
-  Common Space
-  Available Space



For more information, please contact:

### Ron Thomas

Executive Managing Director  
+1 916 288 4801  
ron.thomas@cushwake.com  
LIC #01193241

### Kris Kalmbach

Managing Director  
+1 916 288 4421  
kris.kalmbach@cushwake.com  
LIC #01436668

### Bruce Hohenhaus

Executive Director  
+ 916 288 4804  
bruce.hohenhaus@cushwake.com  
LIC #00677545





AGGIE  
SQUARE

# Level Three

±33,243 RSF

OFFICE/LAB SPACE AVAILABLE

- Retail
- Common Space
- Available Space



For more information, please contact:

**Ron Thomas**

Executive Managing Director  
+1 916 288 4801  
ron.thomas@cushwake.com  
LIC #01193241

**Kris Kalmbach**

Managing Director  
+1 916 288 4421  
kris.kalmbach@cushwake.com  
LIC #01436668

**Bruce Hohenhaus**

Executive Director  
+ 916 288 4804  
bruce.hohenhaus@cushwake.com  
LIC #00677545





AGGIE  
SQUARE

# Level Four

±32,995 RSF

OFFICE/LAB SPACE AVAILABLE

-  Retail
-  Common Space
-  Available Space



For more information, please contact:

**Ron Thomas**

Executive Managing Director  
+1 916 288 4801  
ron.thomas@cushwake.com  
LIC #01193241

**Kris Kalmbach**

Managing Director  
+1 916 288 4421  
kris.kalmbach@cushwake.com  
LIC #01436668

**Bruce Hohenhaus**

Executive Director  
+ 916 288 4804  
bruce.hohenhaus@cushwake.com  
LIC #00677545





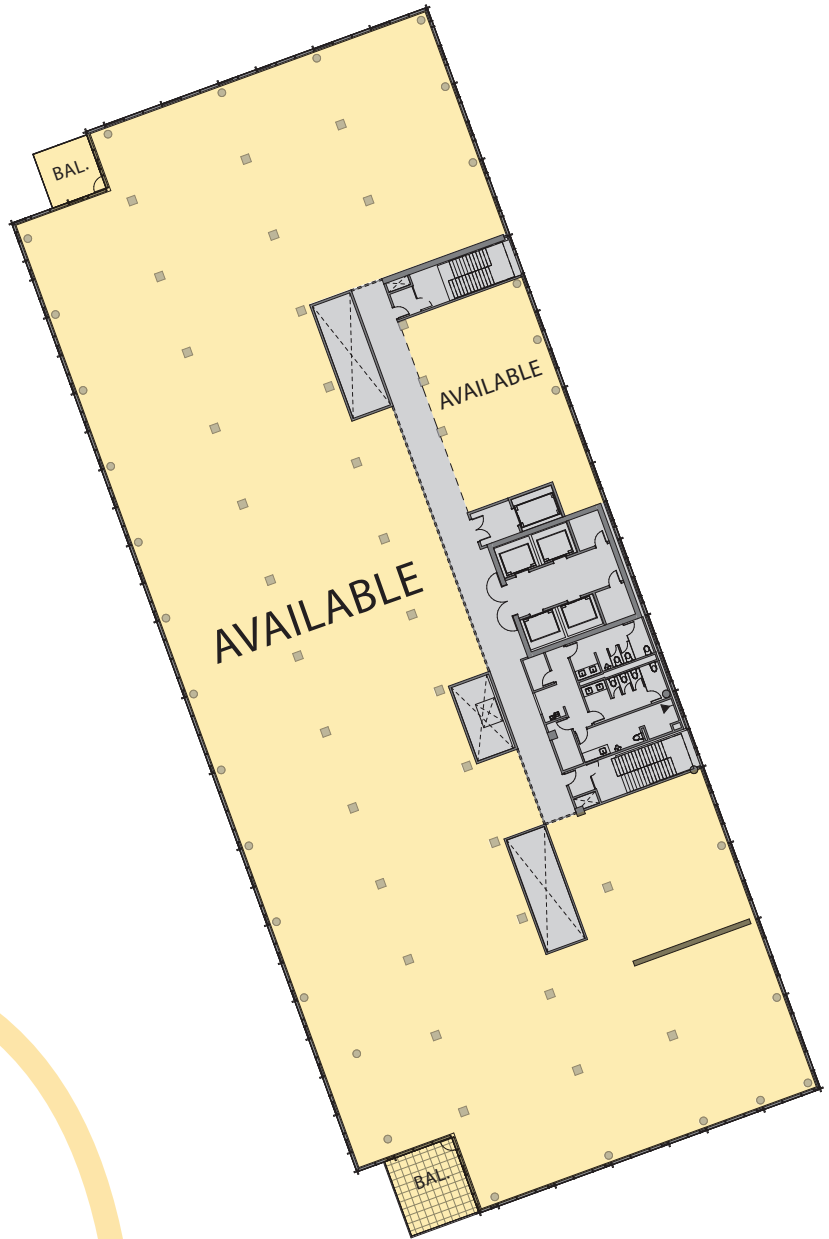
AGGIE  
SQUARE

## Level Five

±33,233 RSF

OFFICE/LAB SPACE AVAILABLE

-  Retail
-  Common Space
-  Available Space



For more information, please contact:

### Ron Thomas

Executive Managing Director  
+1 916 288 4801  
ron.thomas@cushwake.com  
LIC #01193241

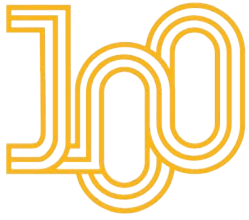
### Kris Kalmbach

Managing Director  
+1 916 288 4421  
kris.kalmbach@cushwake.com  
LIC #01436668

### Bruce Hohenhaus

Executive Director  
+ 916 288 4804  
bruce.hohenhaus@cushwake.com  
LIC #00677545





AGGIE  
SQUARE

## Level Six

±32,621 RSF

OFFICE/LAB SPACE AVAILABLE

-  Retail
-  Common Space
-  Available Space



For more information, please contact:

### Ron Thomas

Executive Managing Director  
+1 916 288 4801  
ron.thomas@cushwake.com  
LIC #01193241

### Kris Kalmbach

Managing Director  
+1 916 288 4421  
kris.kalmbach@cushwake.com  
LIC #01436668

### Bruce Hohenhaus

Executive Director  
+ 916 288 4804  
bruce.hohenhaus@cushwake.com  
LIC #00677545





AGGIE  
SQUARE

## Level Seven

±32,598 RSF

OFFICE/LAB SPACE AVAILABLE

-  Retail
-  Common Space
-  Available Space



For more information, please contact:

### Ron Thomas

Executive Managing Director  
+1 916 288 4801  
ron.thomas@cushwake.com  
LIC #01193241

### Kris Kalmbach

Managing Director  
+1 916 288 4421  
kris.kalmbach@cushwake.com  
LIC #01436668

### Bruce Hohenhaus

Executive Director  
+ 916 288 4804  
bruce.hohenhaus@cushwake.com  
LIC #00677545







**AGGIE  
SQUARE**

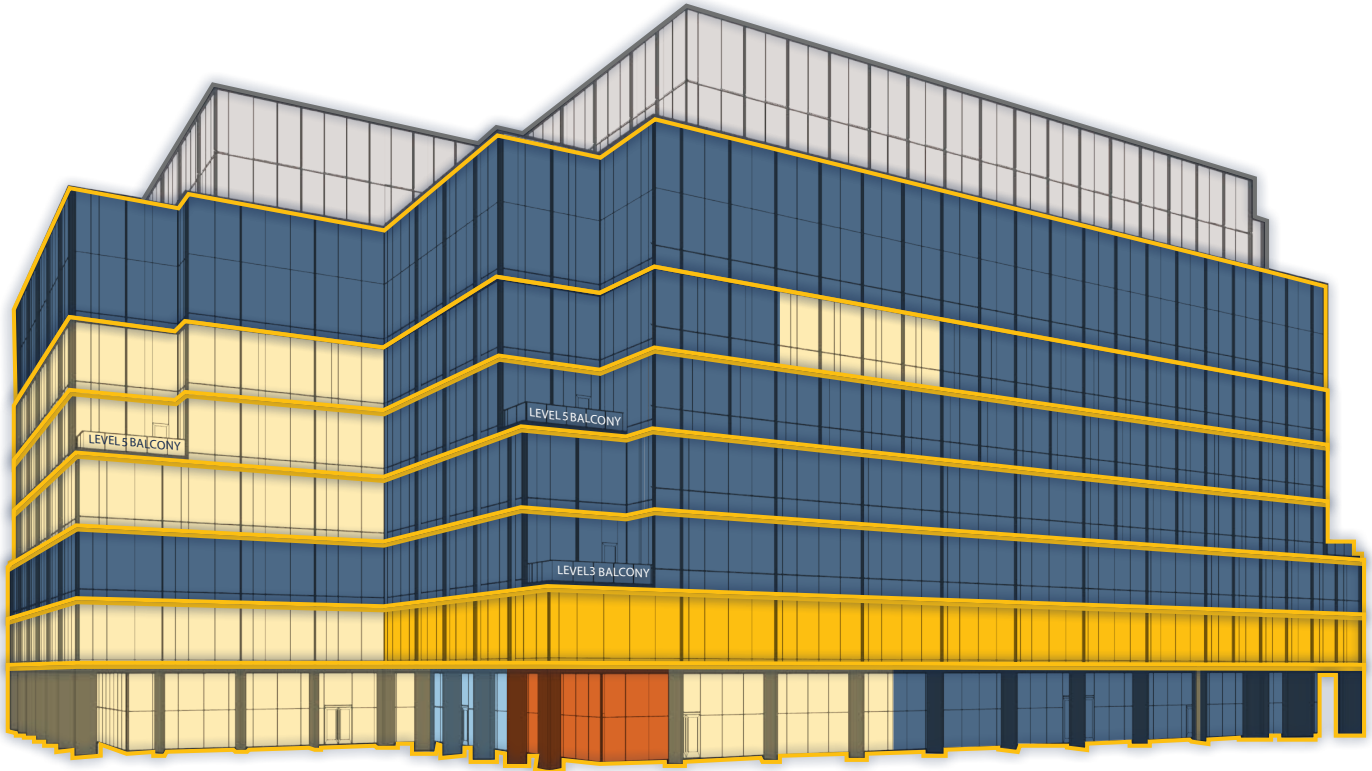
**±295,447 Building SF**

**7 Stories**

**46,000 SF Avg. Floor Plate**

**14'6" Slab -to Slab**

**Q1-2025 Delivery**



- Leased
- Common Space
- Available Space
- Retail
- Connect Labs by Wexford

For more information, please contact:

**Ron Thomas**

Executive Managing Director  
+1 916 288 4801  
ron.thomas@cushwake.com  
LIC #01193241

**Kris Kalmbach**

Managing Director  
+1 916 288 4421  
kris.kalmbach@cushwake.com  
LIC #01436668

**Bruce Hohenhaus**

Executive Director  
+ 916 288 4804  
bruce.hohenhaus@cushwake.com  
LIC #00677545






AGGIE  
SQUARE

## Level One

±9,726 RSF

OFFICE/LAB SPACE AVAILABLE

-  Leased
-  Common Space
-  Available Space
-  Retail
-  Connect Labs by Wexford



For more information, please contact:

### Ron Thomas

Executive Managing Director  
+1 916 288 4801  
ron.thomas@cushwake.com  
LIC #01193241

### Kris Kalmbach

Managing Director  
+1 916 288 4421  
kris.kalmbach@cushwake.com  
LIC #01436668

### Bruce Hohenhaus

Executive Director  
+ 916 288 4804  
bruce.hohenhaus@cushwake.com  
LIC #00677545

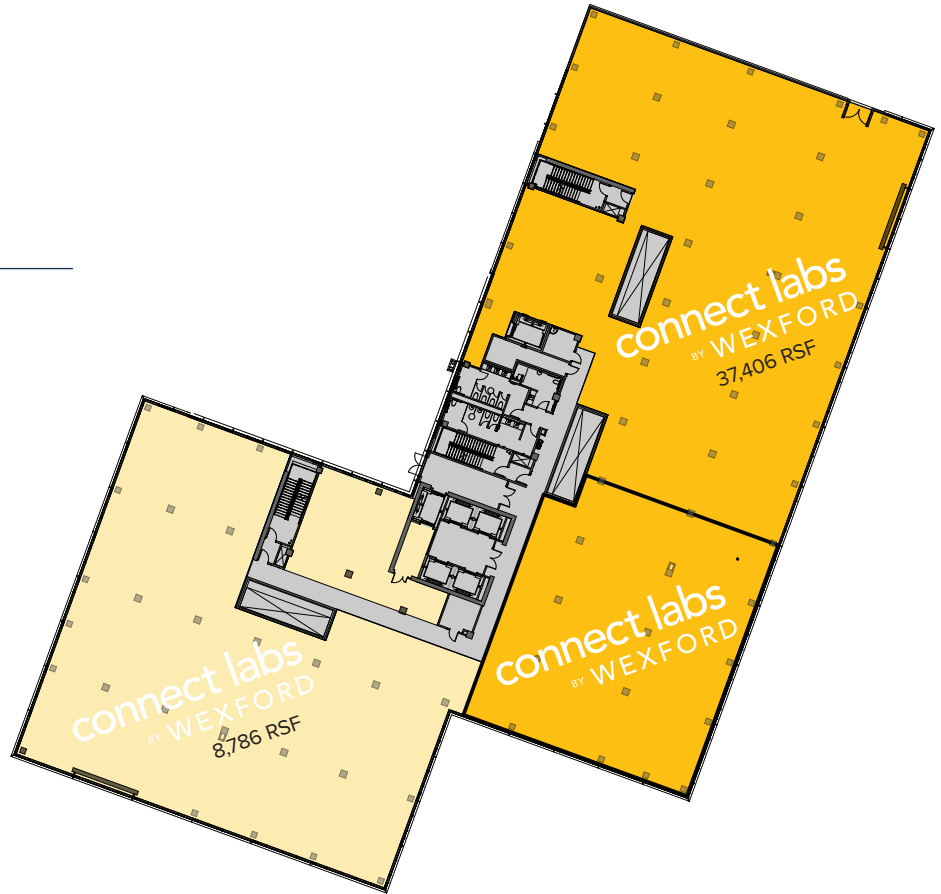




AGGIE  
SQUARE

## Level Two

-  Leased
-  Common Space
-  Connect Labs Expansion
-  Retail
-  Connect Labs by Wexford



For more information, please contact:

**Ron Thomas**

Executive Managing Director  
+1 916 288 4801  
ron.thomas@cushwake.com  
LIC #01193241

**Kris Kalmbach**

Managing Director  
+1 916 288 4421  
kris.kalmbach@cushwake.com  
LIC #01436668

**Bruce Hohenhaus**

Executive Director  
+ 916 288 4804  
bruce.hohenhaus@cushwake.com  
LIC #00677545




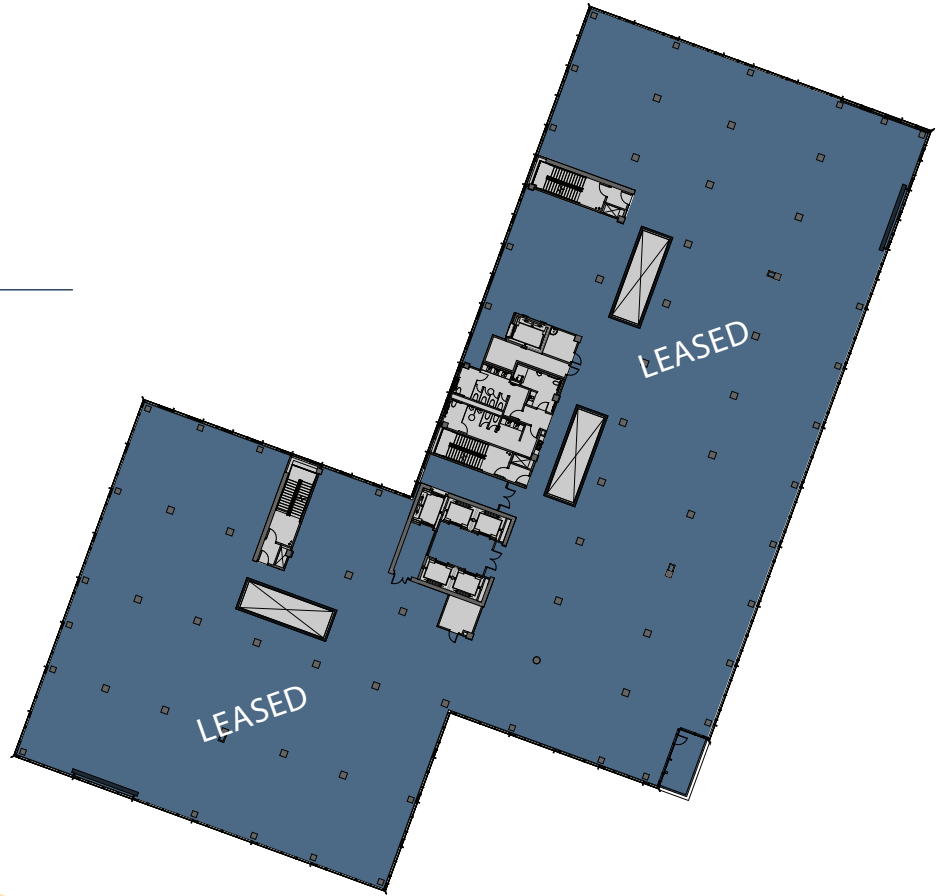


AGGIE  
SQUARE

## Level Three

---

-  Leased
-  Common Space
-  Available Space
-  Retail
-  Connect Labs by Wexford



For more information, please contact:

**Ron Thomas**

Executive Managing Director  
+1 916 288 4801  
ron.thomas@cushwake.com  
LIC #01193241

**Kris Kalmbach**

Managing Director  
+1 916 288 4421  
kris.kalmbach@cushwake.com  
LIC #01436668

**Bruce Hohenhaus**

Executive Director  
+ 916 288 4804  
bruce.hohenhaus@cushwake.com  
LIC #00677545





AGGIE  
SQUARE

## Level Four

±18,322 RSF

OFFICE/LAB SPACE AVAILABLE

-  Leased
-  Common Space
-  Available Space
-  Retail
-  Connect Labs by Wexford



For more information, please contact:

### Ron Thomas

Executive Managing Director  
+1 916 288 4801  
ron.thomas@cushwake.com  
LIC #01193241

### Kris Kalmbach

Managing Director  
+1 916 288 4421  
kris.kalmbach@cushwake.com  
LIC #01436668

### Bruce Hohenhaus

Executive Director  
+ 916 288 4804  
bruce.hohenhaus@cushwake.com  
LIC #00677545





AGGIE  
SQUARE

# Level Five

±17,637 RSF

OFFICE/LAB SPACE AVAILABLE

-  Leased
-  Common Space
-  Available Space
-  Retail
-  Connect Labs by Wexford



For more information, please contact:

**Ron Thomas**

Executive Managing Director  
+1 916 288 4801  
ron.thomas@cushwake.com  
LIC #01193241

**Kris Kalmbach**

Managing Director  
+1 916 288 4421  
kris.kalmbach@cushwake.com  
LIC #01436668

**Bruce Hohenhaus**

Executive Director  
+ 916 288 4804  
bruce.hohenhaus@cushwake.com  
LIC #00677545






AGGIE  
SQUARE

## Level Six

±22,045 RSF

OFFICE/LAB SPACE AVAILABLE

-  Leased
-  Common Space
-  Available Space
-  Retail
-  Connect Labs by Wexford



For more information, please contact:

### Ron Thomas

Executive Managing Director  
+1 916 288 4801  
ron.thomas@cushwake.com  
LIC #01193241

### Kris Kalmbach

Managing Director  
+1 916 288 4421  
kris.kalmbach@cushwake.com  
LIC #01436668

### Bruce Hohenhaus

Executive Director  
+ 916 288 4804  
bruce.hohenhaus@cushwake.com  
LIC #00677545



WEXFORD  
SCIENCE+TECHNOLOGY

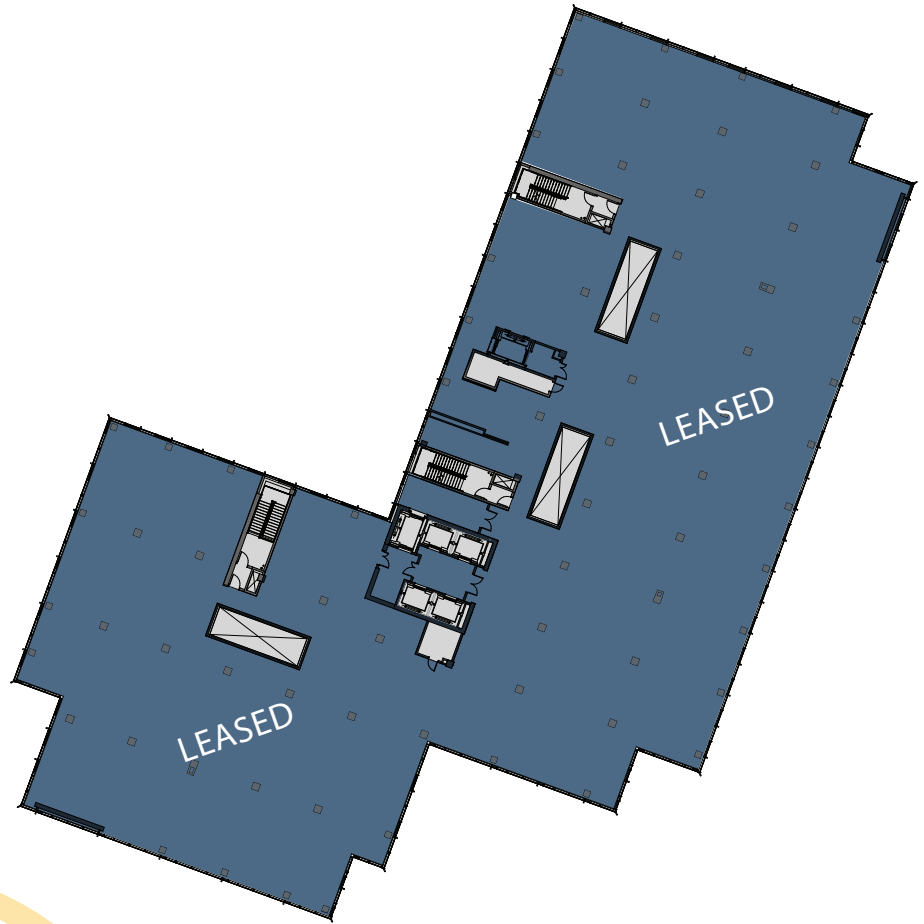


AGGIE  
SQUARE

## Level Seven

---

-  Leased
-  Common Space
-  Available Space
-  Retail
-  Connect Labs by Wexford



For more information, please contact:

**Ron Thomas**

Executive Managing Director  
+1 916 288 4801  
ron.thomas@cushwake.com  
LIC #01193241

**Kris Kalmbach**

Managing Director  
+1 916 288 4421  
kris.kalmbach@cushwake.com  
LIC #01436668

**Bruce Hohenhaus**

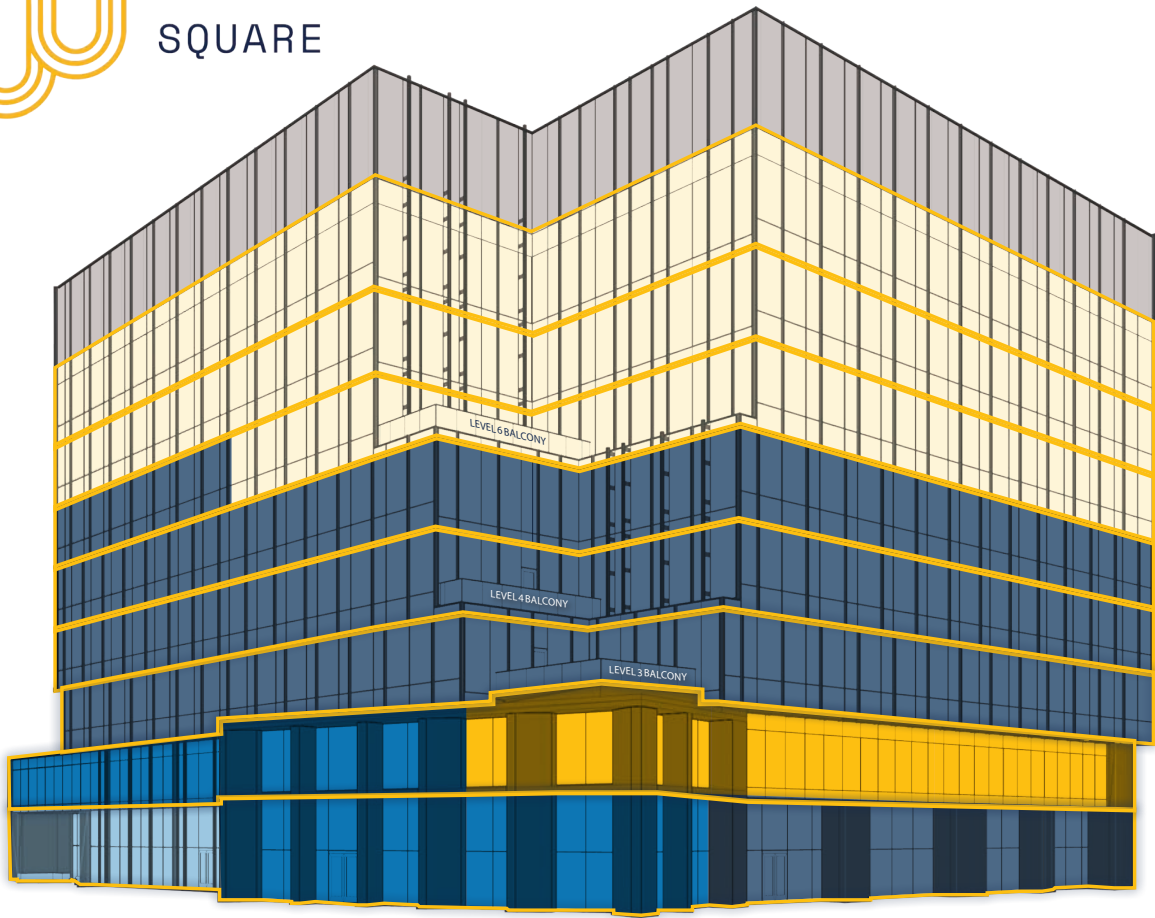
Executive Director  
+ 916 288 4804  
bruce.hohenhaus@cushwake.com  
LIC #00677545







# AGGIE SQUARE



- Leased
- Common Space
- Available Space
- Innovation Space
- Connect Labs by Wexford

For more information, please contact:

### Ron Thomas

Executive Managing Director  
+1 916 288 4801  
ron.thomas@cushwake.com  
LIC #01193241

### Kris Kalmbach

Managing Director  
+1 916 288 4421  
kris.kalmbach@cushwake.com  
LIC #01436668

### Bruce Hohenhaus

Executive Director  
+ 916 288 4804  
bruce.hohenhaus@cushwake.com  
LIC #00677545





AGGIE  
SQUARE

# Level One

-  Leased
-  Common Space
-  Available Space
-  Innovation Space
-  Connect Labs by Wexford



For more information, please contact:

**Ron Thomas**

Executive Managing Director  
+1 916 288 4801  
ron.thomas@cushwake.com  
LIC #01193241

**Kris Kalmbach**

Managing Director  
+1 916 288 4421  
kris.kalmbach@cushwake.com  
LIC #01436668

**Bruce Hohenhaus**

Executive Director  
+ 916 288 4804  
bruce.hohenhaus@cushwake.com  
LIC #00677545

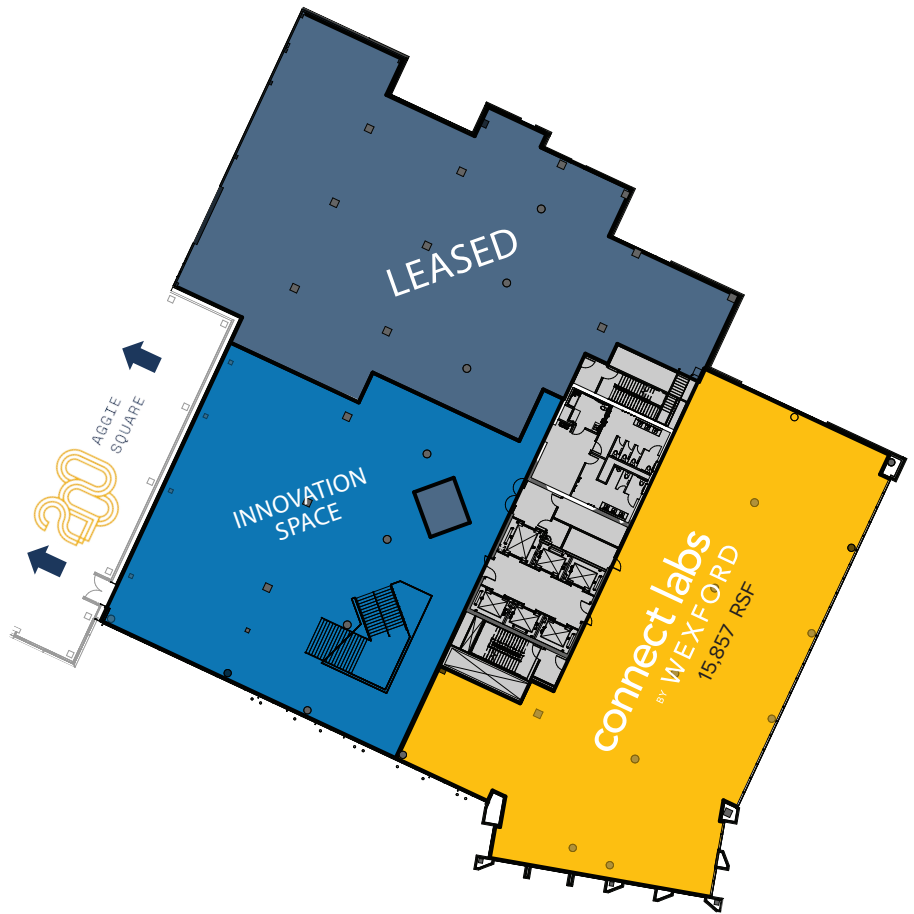




AGGIE  
SQUARE

# Level Two

-  Leased
-  Common Space
-  Available Space
-  Innovation Space
-  Connect Labs by Wexford



For more information, please contact:

**Ron Thomas**

Executive Managing Director  
+1 916 288 4801  
ron.thomas@cushwake.com  
LIC #01193241

**Kris Kalmbach**

Managing Director  
+1 916 288 4421  
kris.kalmbach@cushwake.com  
LIC #01436668

**Bruce Hohenhaus**

Executive Director  
+ 916 288 4804  
bruce.hohenhaus@cushwake.com  
LIC #00677545





AGGIE  
SQUARE

±260,000 Building SF

8 Stories

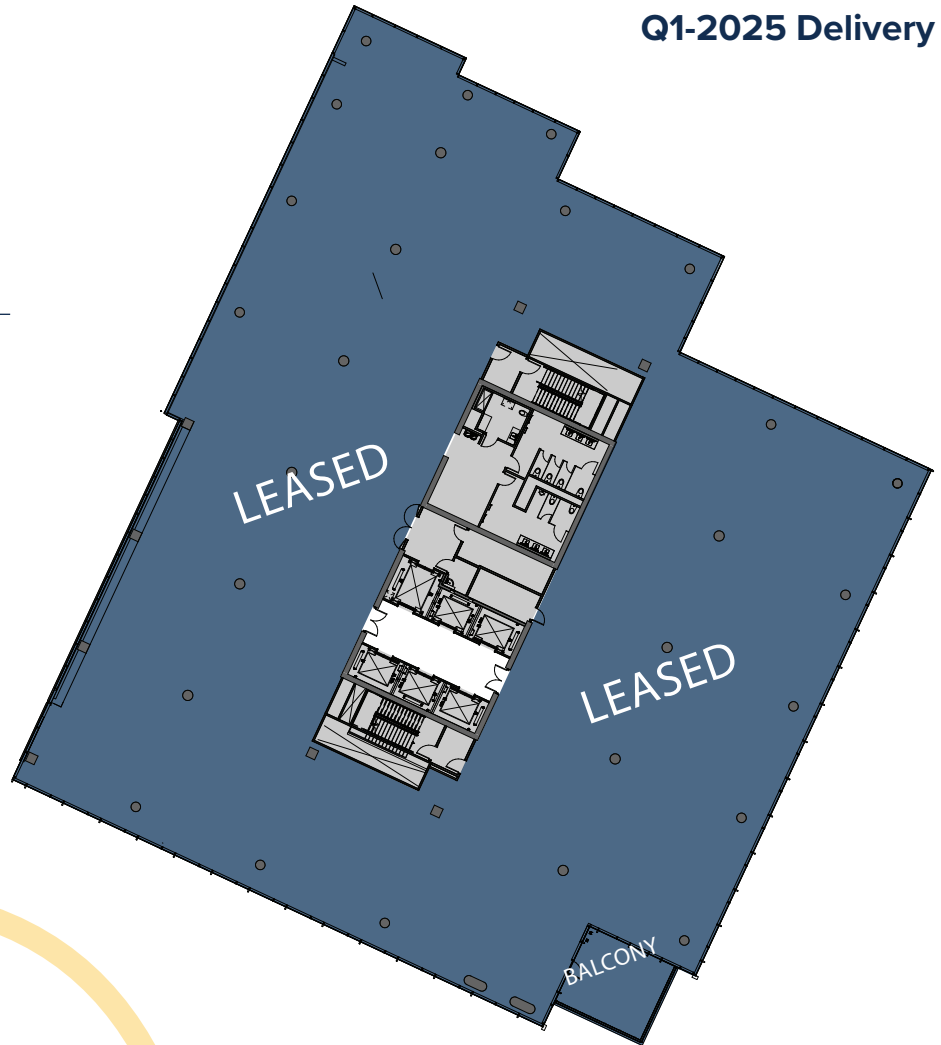
32,000 SF Avg. Floor Plate

14'0" Slab -to Slab

Q1-2025 Delivery

## Level Three

-  Leased
-  Common Space
-  Available Space
-  Innovation Space
-  Connect Labs by Wexford



For more information, please contact:

### Ron Thomas

Executive Managing Director

+1 916 288 4801

ron.thomas@cushwake.com

LIC #01193241

### Kris Kalmbach

Managing Director

+1 916 288 4421

kris.kalmbach@cushwake.com

LIC #01436668

### Bruce Hohenhaus

Executive Director

+ 916 288 4804

bruce.hohenhaus@cushwake.com

LIC #00677545

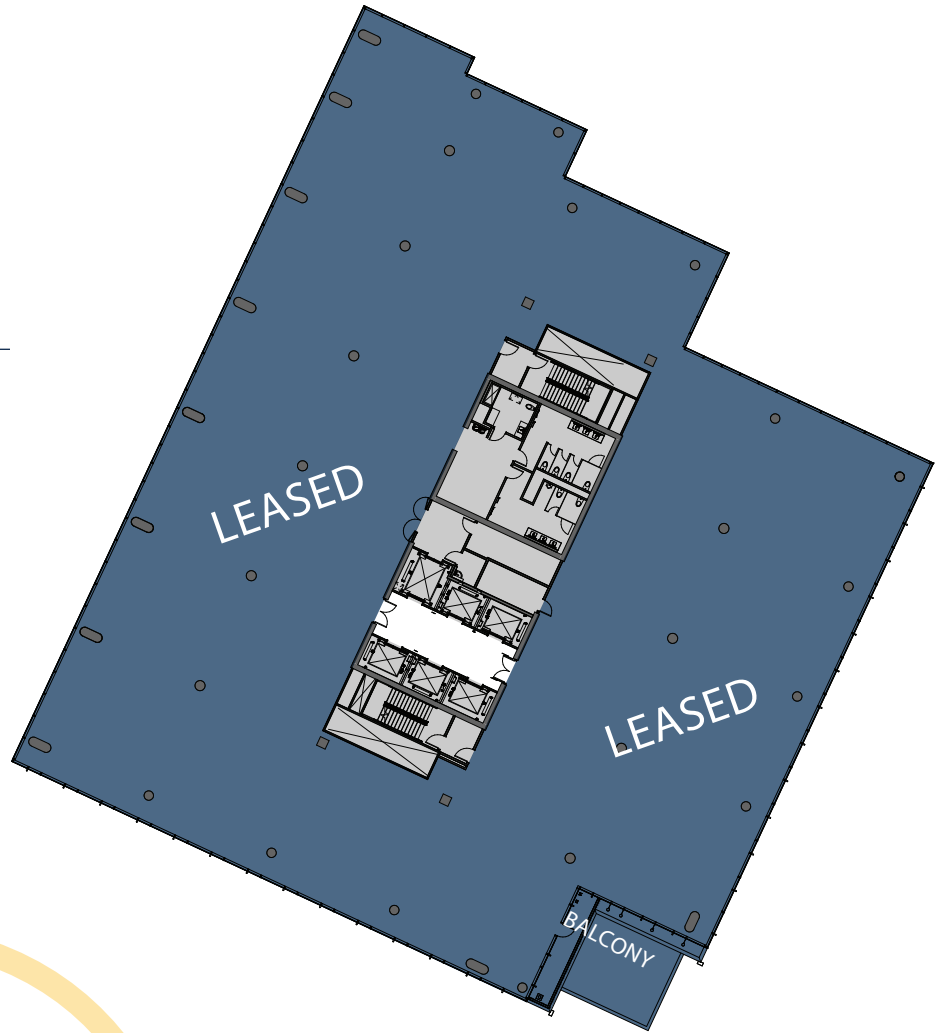




AGGIE  
SQUARE

# Level Four

-  Leased
-  Common Space
-  Available Space
-  Innovation Space
-  Connect Labs by Wexford



For more information, please contact:

### Ron Thomas

Executive Managing Director  
+1 916 288 4801  
ron.thomas@cushwake.com  
LIC #01193241

### Kris Kalmbach

Managing Director  
+1 916 288 4421  
kris.kalmbach@cushwake.com  
LIC #01436668

### Bruce Hohenhaus

Executive Director  
+ 916 288 4804  
bruce.hohenhaus@cushwake.com  
LIC #00677545

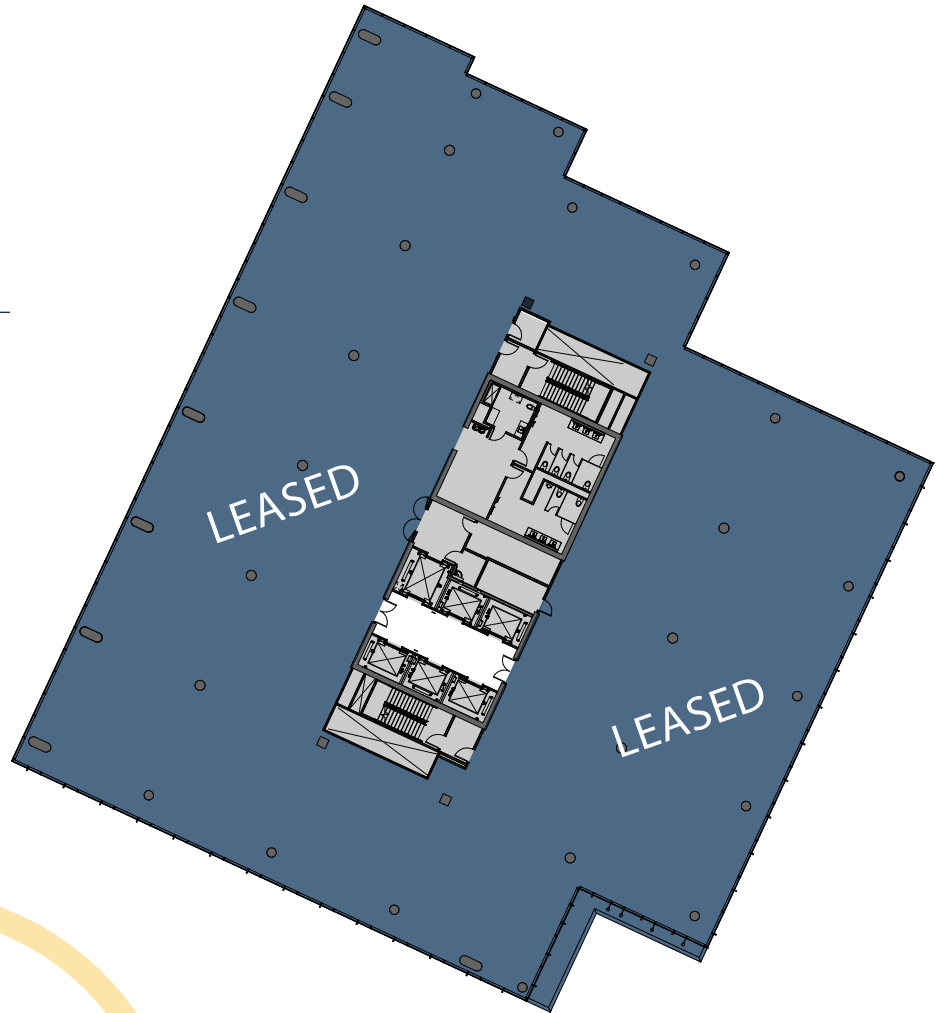




AGGIE  
SQUARE

## Level Five

-  Leased
-  Common Space
-  Available Space
-  Innovation Space
-  Connect Labs by Wexford



For more information, please contact:

### Ron Thomas

Executive Managing Director  
+1 916 288 4801  
ron.thomas@cushwake.com  
LIC #01193241

### Kris Kalmbach

Managing Director  
+1 916 288 4421  
kris.kalmbach@cushwake.com  
LIC #01436668

### Bruce Hohenhaus

Executive Director  
+ 916 288 4804  
bruce.hohenhaus@cushwake.com  
LIC #00677545





AGGIE  
SQUARE

# Level Six

**±20,496 RSF**

OFFICE SPACE AVAILABLE

-  Leased
-  Common Space
-  Available Space
-  Innovation Space
-  Connect Labs by Wexford



For more information, please contact:

**Ron Thomas**

Executive Managing Director  
+1 916 288 4801  
ron.thomas@cushwake.com  
LIC #01193241

**Kris Kalmbach**

Managing Director  
+1 916 288 4421  
kris.kalmbach@cushwake.com  
LIC #01436668

**Bruce Hohenhaus**

Executive Director  
+ 916 288 4804  
bruce.hohenhaus@cushwake.com  
LIC #00677545





AGGIE  
SQUARE

# Level Seven

**±32,691 RSF**

OFFICE SPACE AVAILABLE

-  Leased
-  Common Space
-  Available Space
-  Innovation Space
-  Connect Labs by Wexford



For more information, please contact:

**Ron Thomas**

Executive Managing Director  
+1 916 288 4801  
ron.thomas@cushwake.com  
LIC #01193241

**Kris Kalmbach**

Managing Director  
+1 916 288 4421  
kris.kalmbach@cushwake.com  
LIC #01436668

**Bruce Hohenhaus**

Executive Director  
+ 916 288 4804  
bruce.hohenhaus@cushwake.com  
LIC #00677545





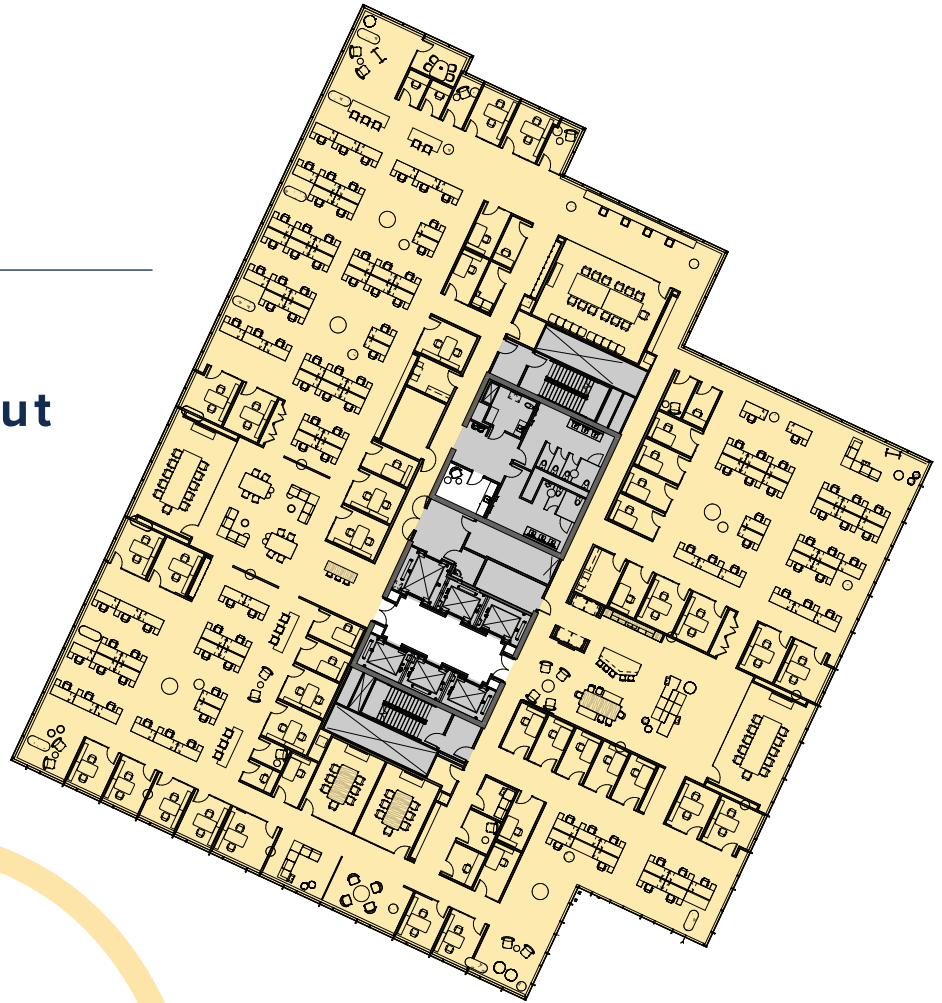


AGGIE  
SQUARE

# Level Seven and Eight

## Hypothetical High-Density Layout

-  Leased
-  Common Space
-  Available Space
-  Innovation Space
-  Connect Labs by Wexford



For more information, please contact:

### Ron Thomas

Executive Managing Director  
+1 916 288 4801  
ron.thomas@cushwake.com  
LIC #01193241

### Kris Kalmbach

Managing Director  
+1 916 288 4421  
kris.kalmbach@cushwake.com  
LIC #01436668

### Bruce Hohenhaus

Executive Director  
+ 916 288 4804  
bruce.hohenhaus@cushwake.com  
LIC #00677545





AGGIE  
SQUARE

# Level Eight

±32,691 RSF

OFFICE/LAB SPACE AVAILABLE

-  Leased
-  Common Space
-  Available Space
-  Innovation Space
-  Connect Labs by Wexford



For more information, please contact:

### Ron Thomas

Executive Managing Director  
+1 916 288 4801  
ron.thomas@cushwake.com  
LIC #01193241

### Kris Kalmbach

Managing Director  
+1 916 288 4421  
kris.kalmbach@cushwake.com  
LIC #01436668

### Bruce Hohenhaus

Executive Director  
+ 916 288 4804  
bruce.hohenhaus@cushwake.com  
LIC #00677545

