

FOR SUBLEASE



1001 W 8TH ST

DEER PARK, TX 77536

COE PARKER, SIOR  
+1 713 963 2825  
coe.parker@cushwake.com

B. KELLEY PARKER III, SIOR  
+1 713 963 2896  
kelley.parker@cushwake.com

JOHN F. LITTMAN, SIOR  
+1 713 963 2862  
john.littman@cushwake.com



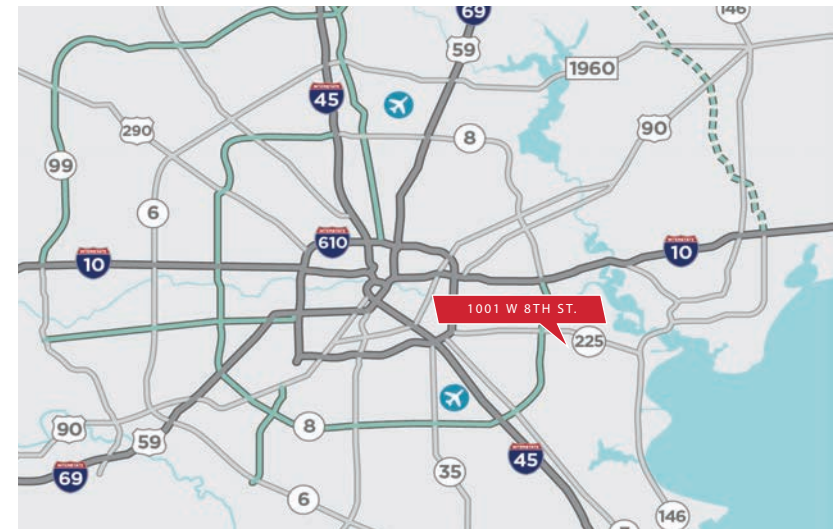
# OVERVIEW

1001 W 8TH ST.

## PROPERTY OVERVIEW

Location	1001 W 8th St. Deer Park, TX 77536
Rentable Area	+/-20,165 SF
Office Area	1st Floor: +/-4,582 SF 2nd Floor: +/-3,977 SF
Shop Area	+/-11,606 SF
Eave Height	28'
Property Features	<ul style="list-style-type: none"><li>• Three (3) grade level doors</li><li>• Tiltwall construction</li><li>• 100% concrete</li><li>• 16,000 SF secured concrete storage yard</li></ul>
Rental Rate	<b>\$20,260.67/month NNN</b>
OPEX	\$6,240.32/month
Lease Expiration	September 30, 2024

## AERIAL/MAP



FOR MORE INFORMATION, PLEASE CONTACT:

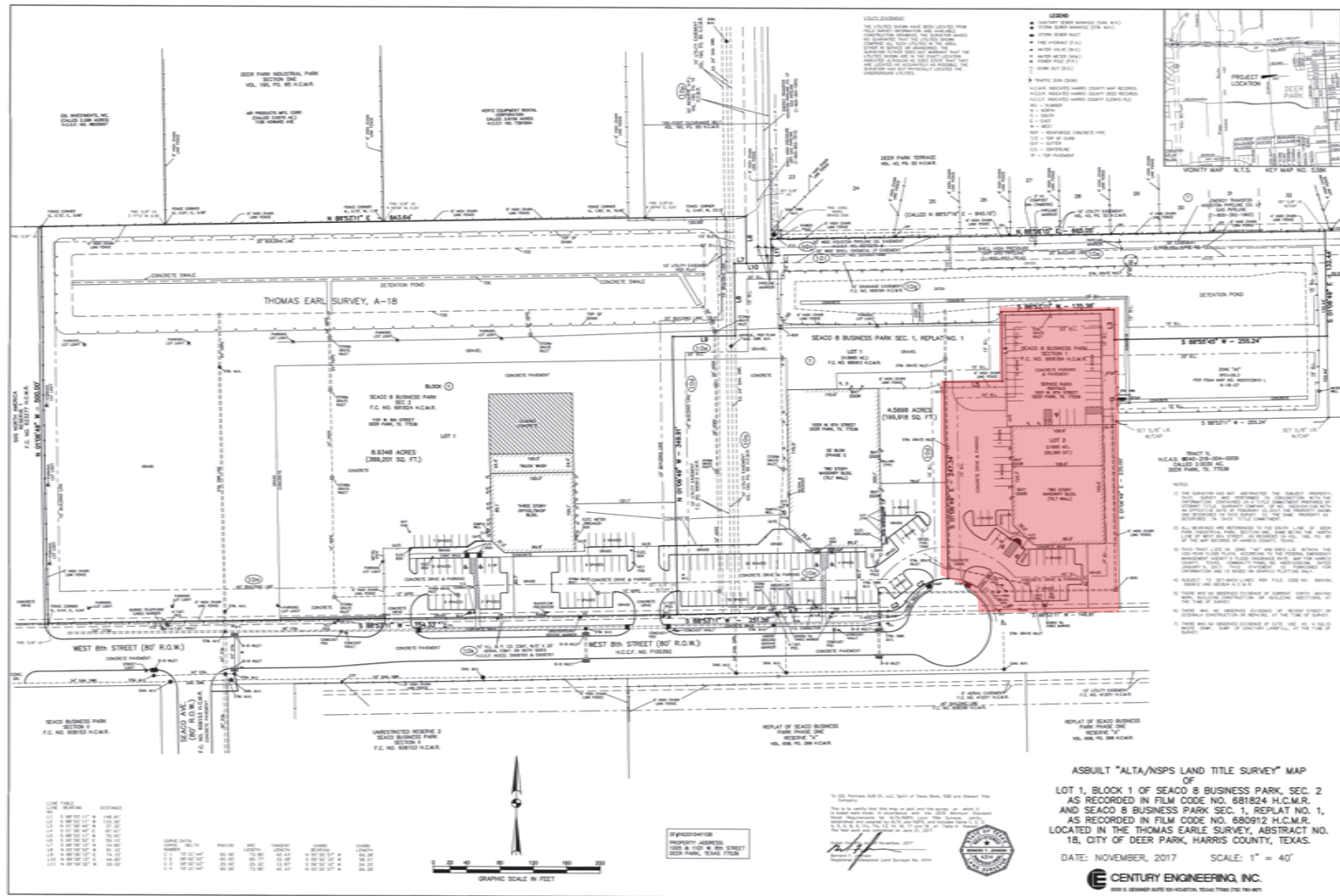
COE PARKER, SIOR  
+1 713 963 2825  
coe.parker@cushwake.com

B. KELLEY PARKER III, SIOR  
+1 713 963 2896  
kelley.parker@cushwake.com

JOHN F. LITTMAN, SIOR  
+1 713 963 2862  
john.littman@cushwake.com

# SITE PLAN

1001 W 8TH ST.



FOR MORE INFORMATION, PLEASE CONTACT:

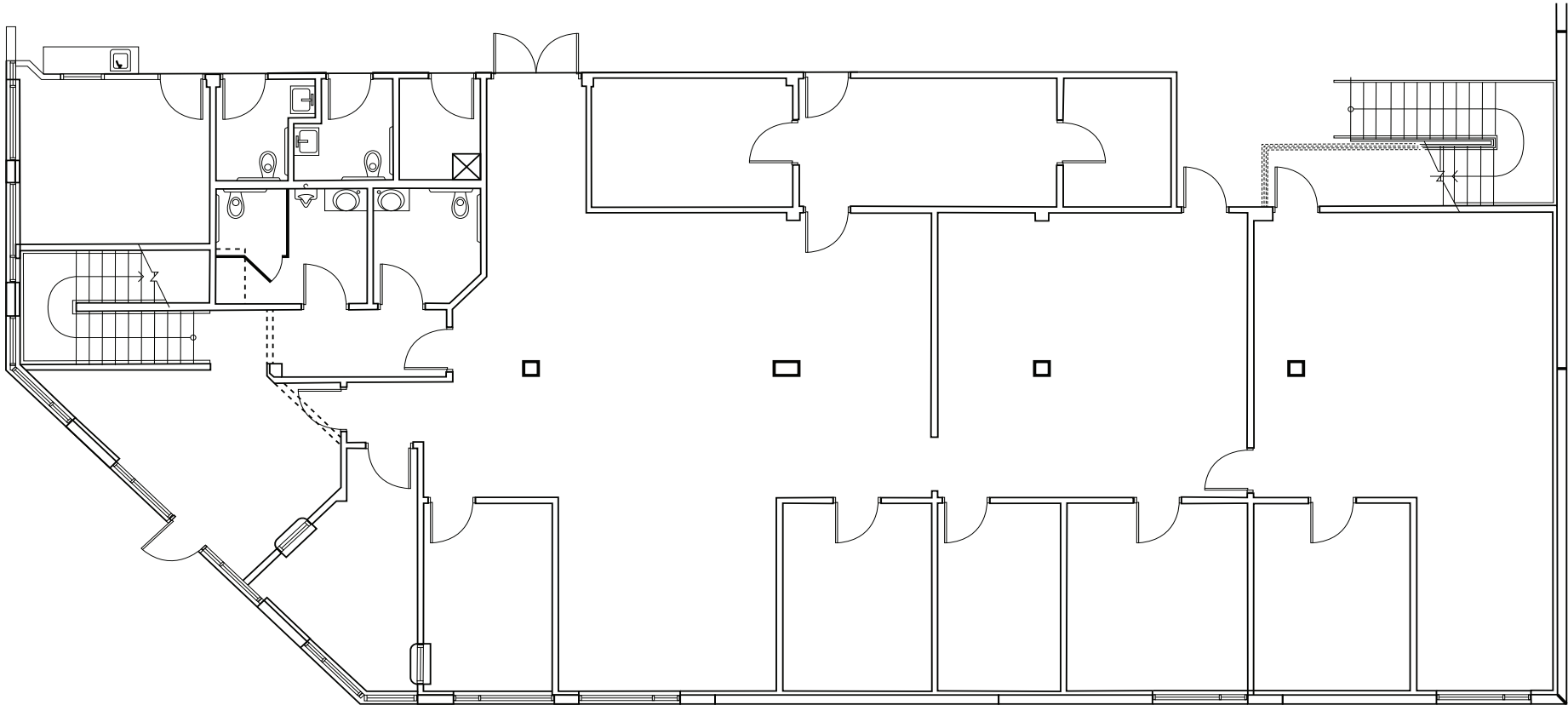
COE PARKER, SIOR  
 +1 713 963 2825  
 coe.parker@cushwake.com

B. KELLEY PARKER III, SIOR  
 +1 713 963 2896  
 kelley.parker@cushwake.com

JOHN F. LITTMAN, SIOR  
 +1 713 963 2862  
 john.littman@cushwake.com

# 1ST FLOOR OFFICE LAYOUT/FLOOR PLAN

1001 W 8TH ST.



FOR MORE INFORMATION, PLEASE CONTACT:

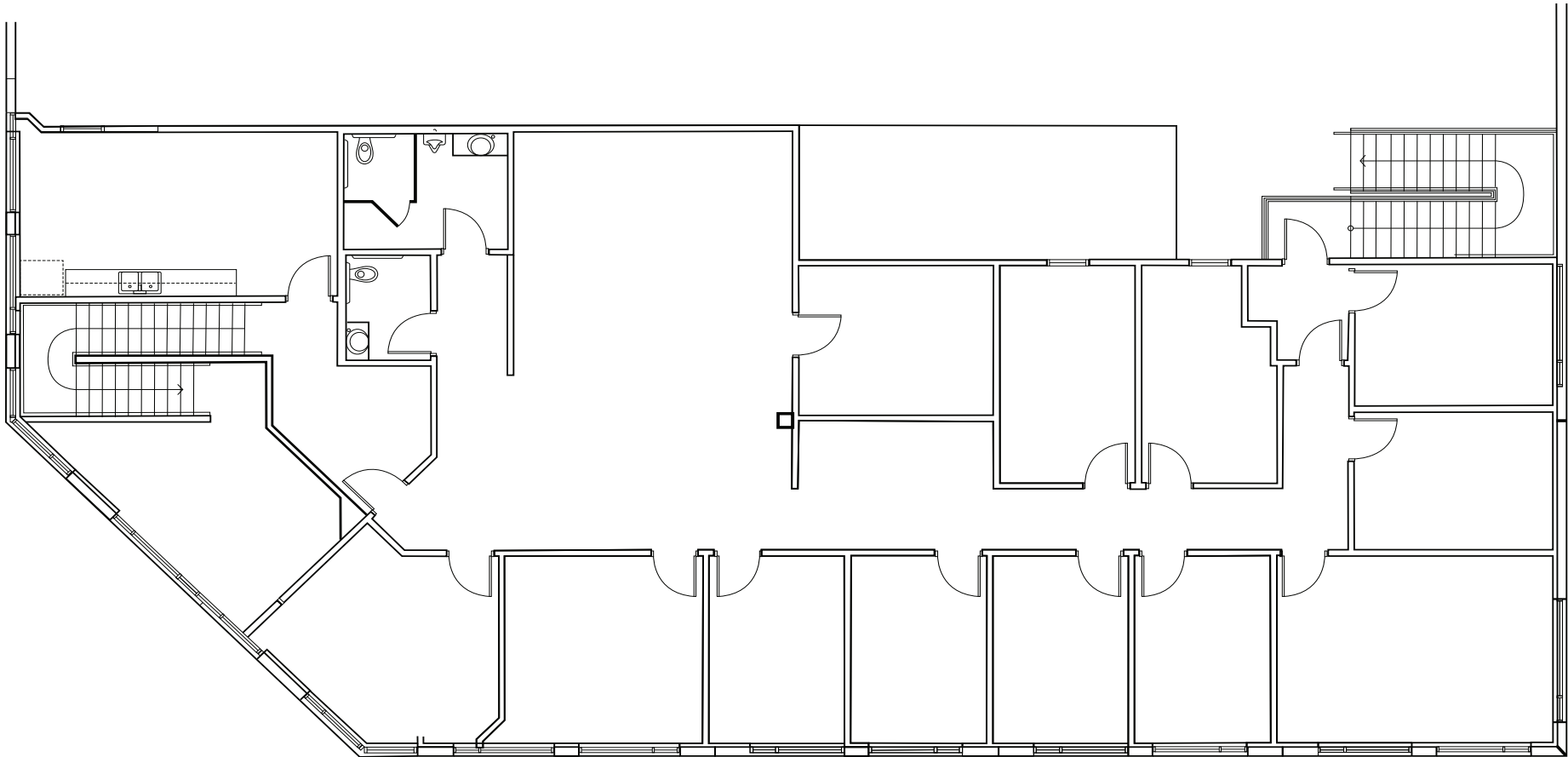
COE PARKER, SIOR  
+1 713 963 2825  
coe.parker@cushwake.com

B. KELLEY PARKER III, SIOR  
+1 713 963 2896  
kelley.parker@cushwake.com

JOHN F. LITTMAN, SIOR  
+1 713 963 2862  
john.littman@cushwake.com

# 2ND FLOOR OFFICE LAYOUT/FLOOR PLAN

1001 W 8TH ST.



Mezzanine



FOR MORE INFORMATION, PLEASE CONTACT:

COE PARKER, SIOR  
+1 713 963 2825  
coe.parker@cushwake.com

B. KELLEY PARKER III, SIOR  
+1 713 963 2896  
kelley.parker@cushwake.com

JOHN F. LITTMAN, SIOR  
+1 713 963 2862  
john.littman@cushwake.com

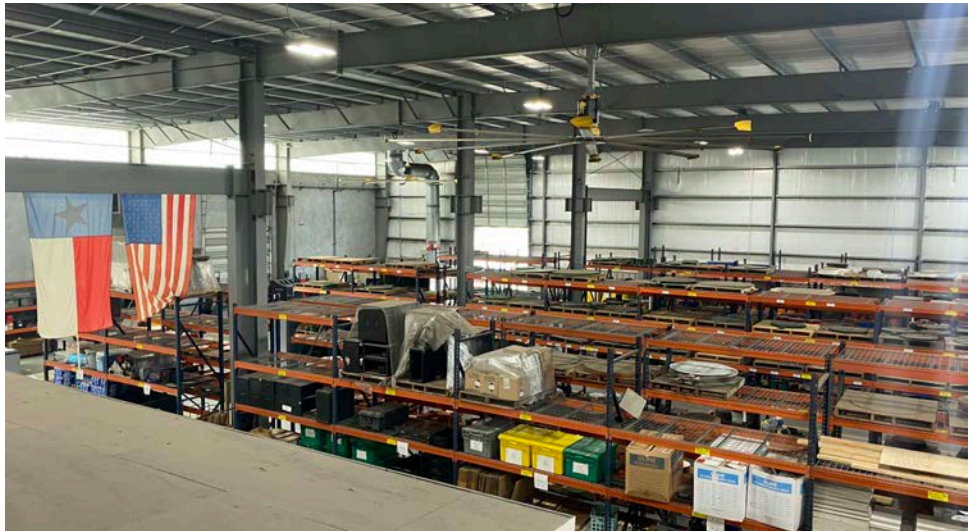


FOR MORE INFORMATION, PLEASE CONTACT:

COE PARKER, SIOR  
+1 713 963 2825  
coe.parker@cushwake.com

B. KELLEY PARKER III, SIOR  
+1 713 963 2896  
kelley.parker@cushwake.com

JOHN F. LITTMAN, SIOR  
+1 713 963 2862  
john.littman@cushwake.com

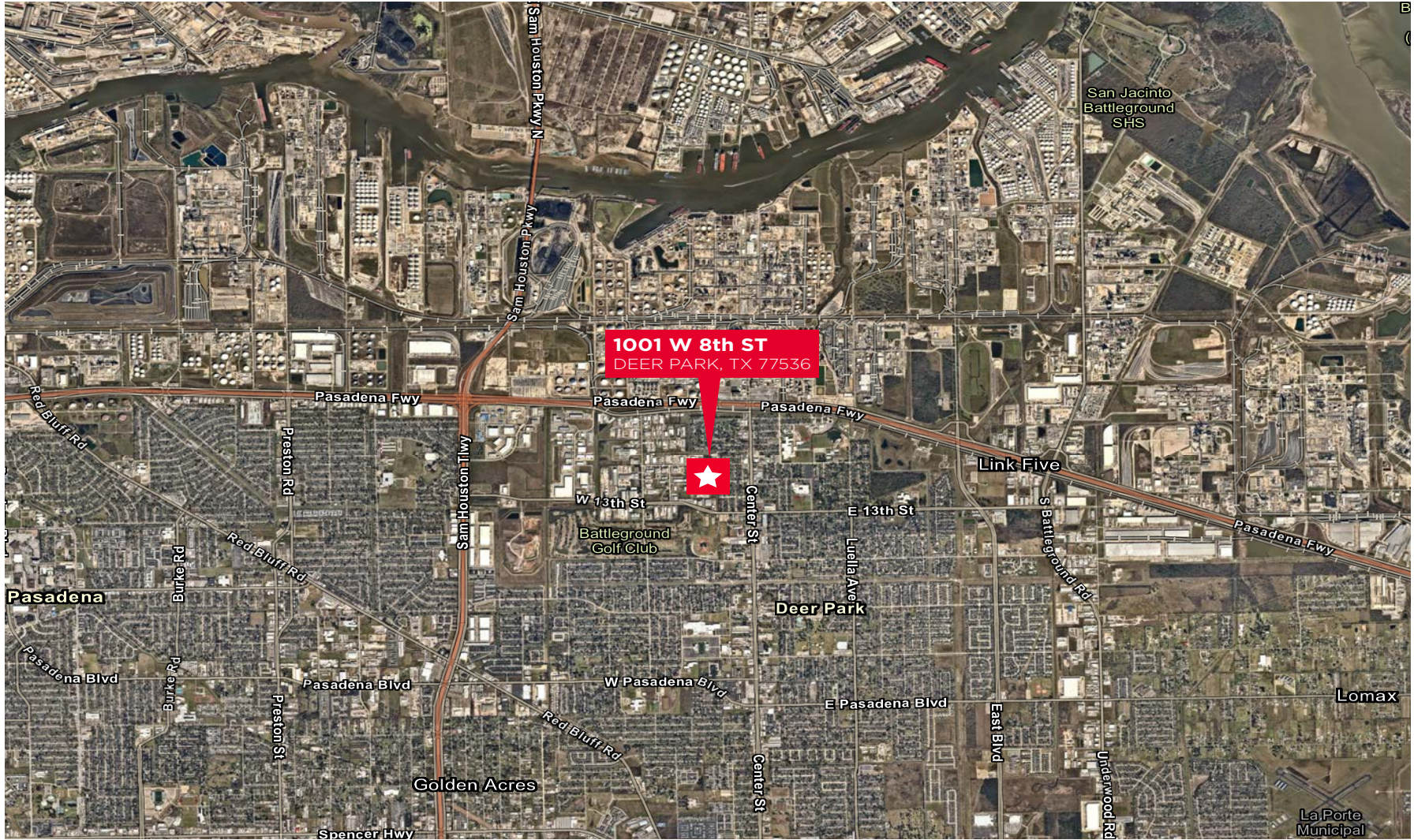


FOR MORE INFORMATION, PLEASE CONTACT:

COE PARKER, SIOR  
+1 713 963 2825  
coe.parker@cushwake.com

B. KELLEY PARKER III, SIOR  
+1 713 963 2896  
kelley.parker@cushwake.com

JOHN F. LITTMAN, SIOR  
+1 713 963 2862  
john.littman@cushwake.com



FOR MORE INFORMATION, PLEASE CONTACT:

COE PARKER, SIOR  
+1 713 963 2825  
coe.parker@cushwake.com

B. KELLEY PARKER III, SIOR  
+1 713 963 2896  
kelley.parker@cushwake.com

JOHN F. LITTMAN, SIOR  
+1 713 963 2862  
john.littman@cushwake.com