

±5.284 Acres | KATY, TX

Morton Rd - east of Katy Hockley Cutoff Rd



KRISTEN MCDADE
Managing Director
T: +1 713 331 1796
kristen.mcdade@cushwake.com

MATTHEW DAVIS
Senior Director
T: +1 713 331 1798
matthew.davis@cushwake.com

CHARLIE MCGAHREN
Associate
T: +1 713 331 1772
charlie.mcgauren@cushwake.com



REMAINING AVAILABLE TRACTS



MORTON RD. KATY, TX

The remaining commercial reserve available are situated next to Read King's development which features a new HEB that opened back in February of 2024. The new HEB store at Katy Park is expected to serve the residents of Katy's northwest quadrant, which is the fastest-growing area in the city.

This property is also seconds away from Katy Park which is 100 acres that features 12 baseball and soccer fields with more than 700,000 visitors per year.



±5.284 Net Acres
for Retail



Utilities: Available
through HCMUD 536



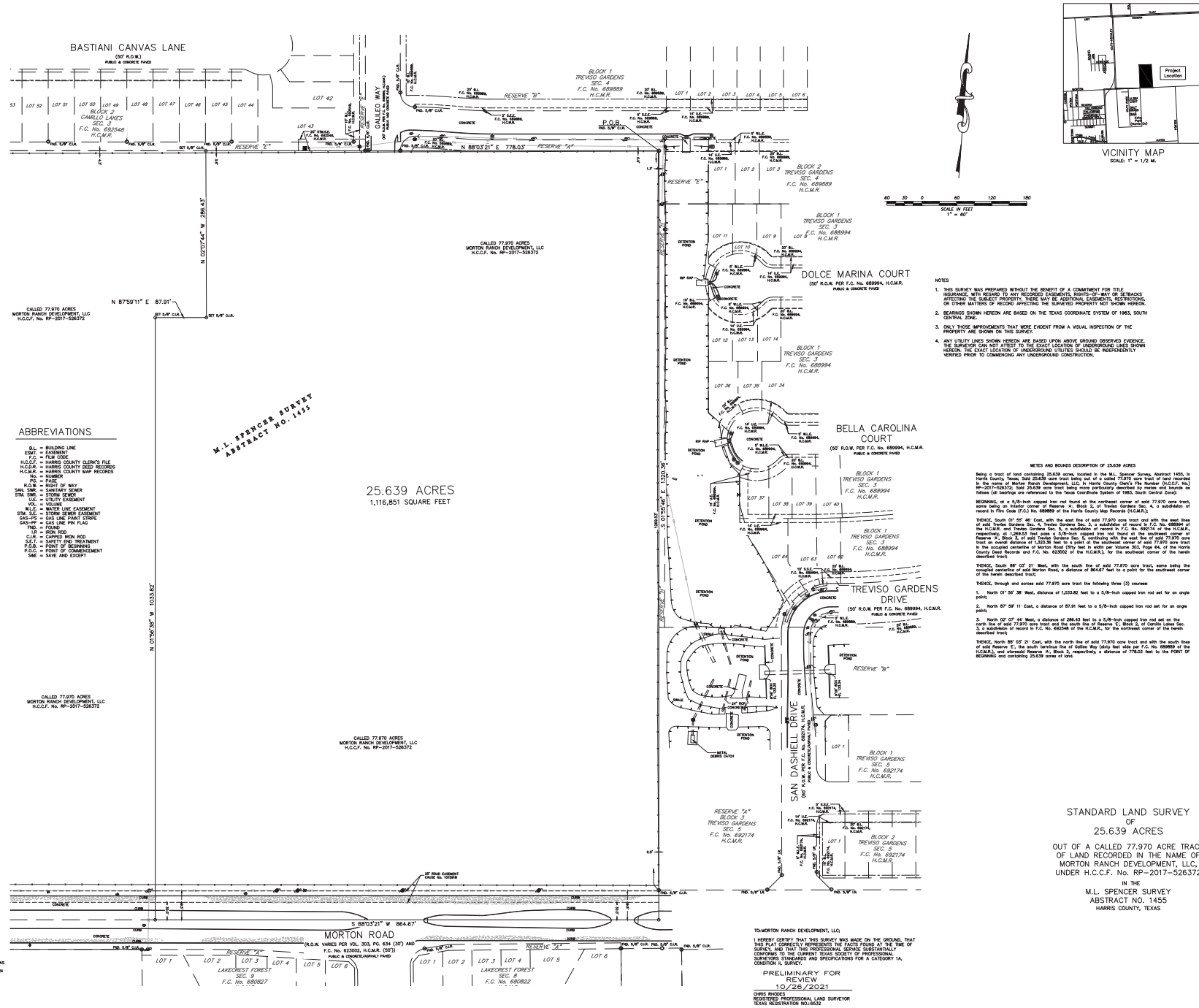
Detention:
Off-Site



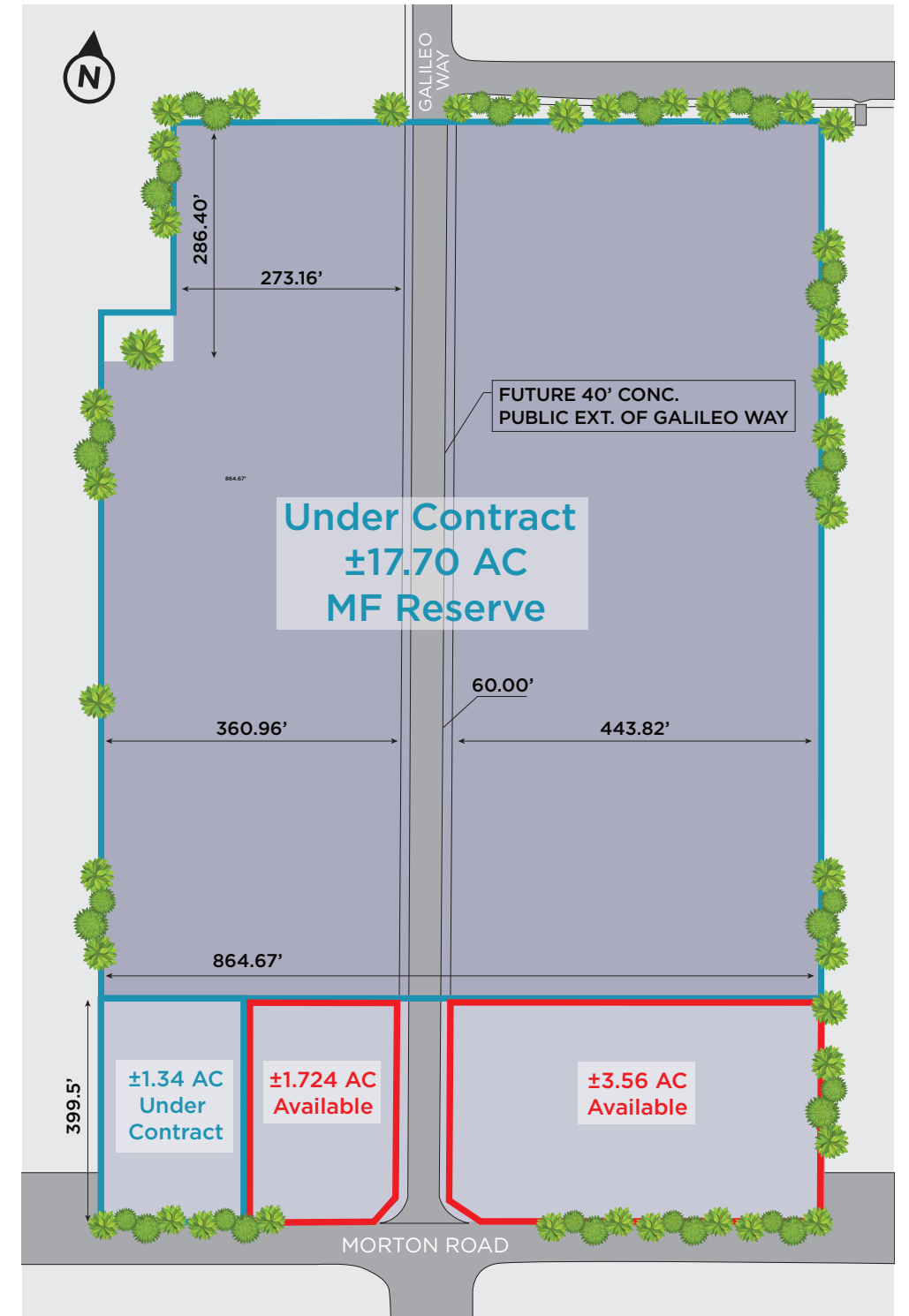
Price:
CONTACT BROKERS



REMAINDER SURVEY



SITE PLAN





KATY PARK

H-E-B

THE OAK
AT KATY PARK

MORTON RD [23,643 CPD]

KATY HOCKLEY CUT OFF RD [21,948 CPD]

FUTURE GALILEO WAY

KRISTEN MCDADE
 Managing Director
 T: +1 713 331 1796
 kristen.mcdade@cushwake.com

MATTHEW DAVIS
 Senior Director
 T: +1 713 331 1798
 matthew.davis@cushwake.com

CHARLIE MCGAHREN
 Associate
 T: +1 713 331 1772
 charlie.mcgahren@cushwake.com



©2024 Cushman & Wakefield. All rights reserved. The information contained in this communication is strictly confidential. This information has been obtained from sources believed to be reliable but has not been verified. NO WARRANTY OR REPRESENTATION, EXPRESS OR IMPLIED, IS MADE AS TO THE CONDITION OF THE PROPERTY (OR PROPERTIES) REFERENCED HEREIN OR AS TO THE ACCURACY OR COMPLETENESS OF THE INFORMATION CONTAINED HEREIN, AND SAME IS SUBMITTED SUBJECT TO ERRORS, OMISSIONS, CHANGE OF PRICE, RENTAL OR OTHER CONDITIONS, WITHDRAWAL WITHOUT NOTICE, AND TO ANY SPECIAL LISTING CONDITIONS IMPOSED BY THE PROPERTY OWNER(S). ANY PROJECTIONS, OPINIONS OR ESTIMATES ARE SUBJECT TO UNCERTAINTY AND DO NOT SIGNIFY CURRENT OR FUTURE PROPERTY PERFORMANCE. COE-PM-CENTRAL- 10/11/24