

# Westport Business Park

6955 Portwest Drive, Suite 100  
Houston, TX 77024

**4,960 SF Flex/Office Available**

**FOR LEASE**



## PROPERTY HIGHLIGHTS

- Located in Westport Business Park, Just Inside the 610 Loop, South of Old Katy Road
- Direct Access to I-10 and 610 Loop in Both Directions
- 6955 Portwest Drive Building is Located on 2.23 Acres
- Multi-Tenant Building
- 68% Office, 25% A/C Open Workspace, 7% Warehouse
- Suite 100 Office/Service/Warehouse Facility

## LEASE TERMS

- \$1.15 Per Square Foot/Month/Net
- 4,960 SF NRA – Immediate Availability
- 3 to 5 Year Lease Terms Available

MICHAEL FOREMAN  
+1 713 963 2850  
[michael.foreman@cushwake.com](mailto:michael.foreman@cushwake.com)

MARIA PAPPAS  
+1 346 249 8341  
[maria.pappas@cushwake.com](mailto:maria.pappas@cushwake.com)



**CUSHMAN &  
WAKEFIELD**  
[cushmanwakefield.com](http://cushmanwakefield.com)

# Westport Business Park

6955 Portwest Drive, Suite 100  
Houston, TX 77024

4,960 SF Flex/Office Available

FOR LEASE

## INGRESS/EGRESS



MICHAEL FOREMAN  
+1 713 963 2850  
[michael.foreman@cushwake.com](mailto:michael.foreman@cushwake.com)

MARIA PAPPAS  
+1 346 249 8341  
[maria.pappas@cushwake.com](mailto:maria.pappas@cushwake.com)



**CUSHMAN &  
WAKEFIELD**  
[cushmanwakefield.com](http://cushmanwakefield.com)



# Westport Business Park

6955 Portwest Drive, Suite 100  
Houston, TX 77024

4,960 SF Flex/Office Available

FOR LEASE

## INTERIOR PHOTOS & TRUCK COURT



MICHAEL FOREMAN  
+1 713 963 2850  
[michael.foreman@cushwake.com](mailto:michael.foreman@cushwake.com)

MARIA PAPPAS  
+1 346 249 8341  
[maria.pappas@cushwake.com](mailto:maria.pappas@cushwake.com)



**CUSHMAN &  
WAKEFIELD**  
[cushmanwakefield.com](http://cushmanwakefield.com)

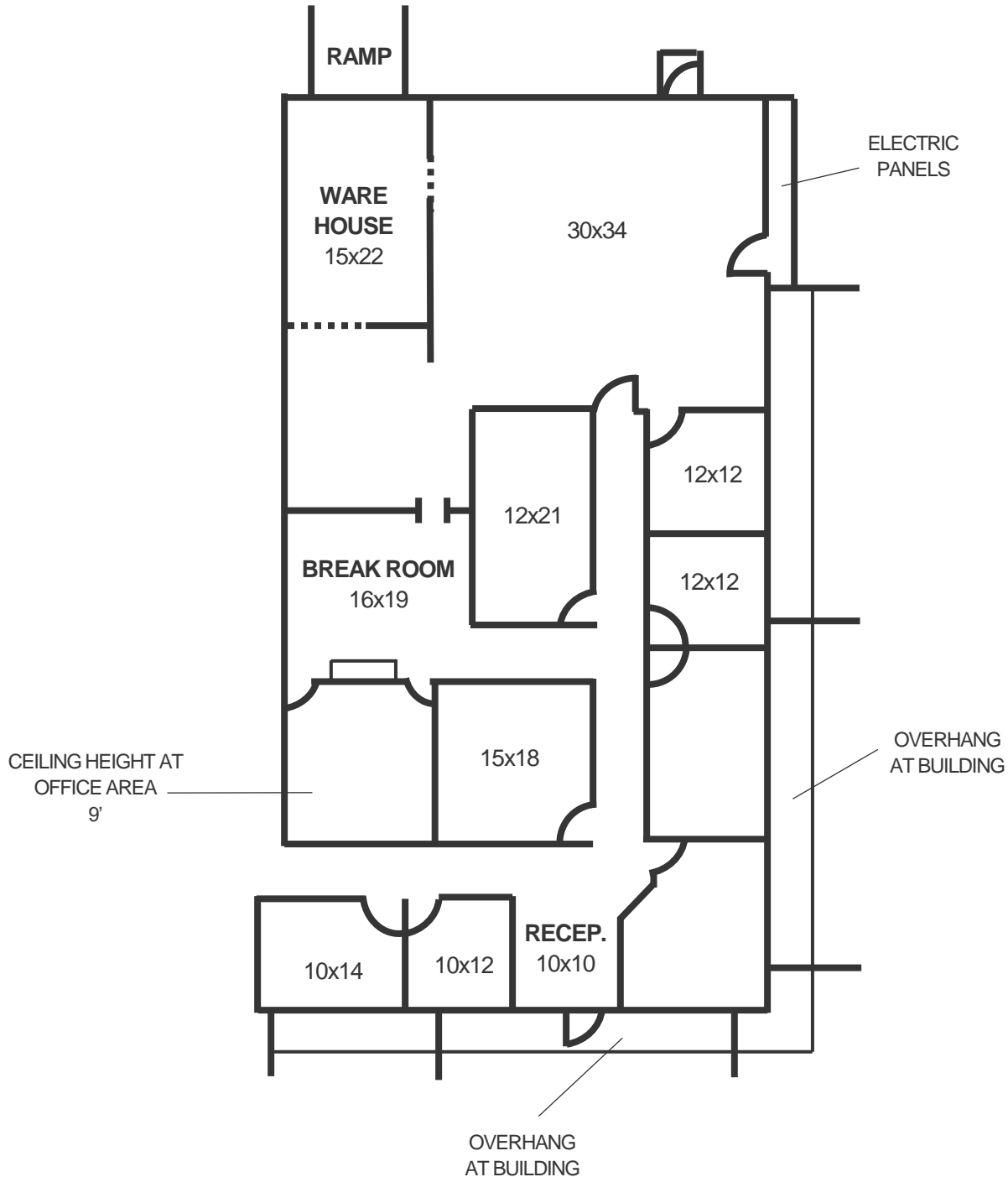
# Westport Business Park

6955 Portwest Drive, Suite 100  
Houston, TX 77024

4,960 SF Flex/Office Available

FOR LEASE

## FLOOR PLAN



MICHAEL FOREMAN  
+1 713 963 2850  
[michael.foreman@cushwake.com](mailto:michael.foreman@cushwake.com)

MARIA PAPPAS  
+1 346 249 8341  
[maria.pappas@cushwake.com](mailto:maria.pappas@cushwake.com)



**CUSHMAN &  
WAKEFIELD**  
[cushmanwakefield.com](http://cushmanwakefield.com)