

# EASTON COMMERCE PARK

1525 WOOD AVENUE | EASTON, PA



±1,006,880 SF

EASTON, PENNSYLVANIA



# LOCAL MAP



NAZARETH

39

PENNSYLVANIA

476

EASTON

78

22

BETHLEHEM

NEW JERSEY

ALLENTOWN

78

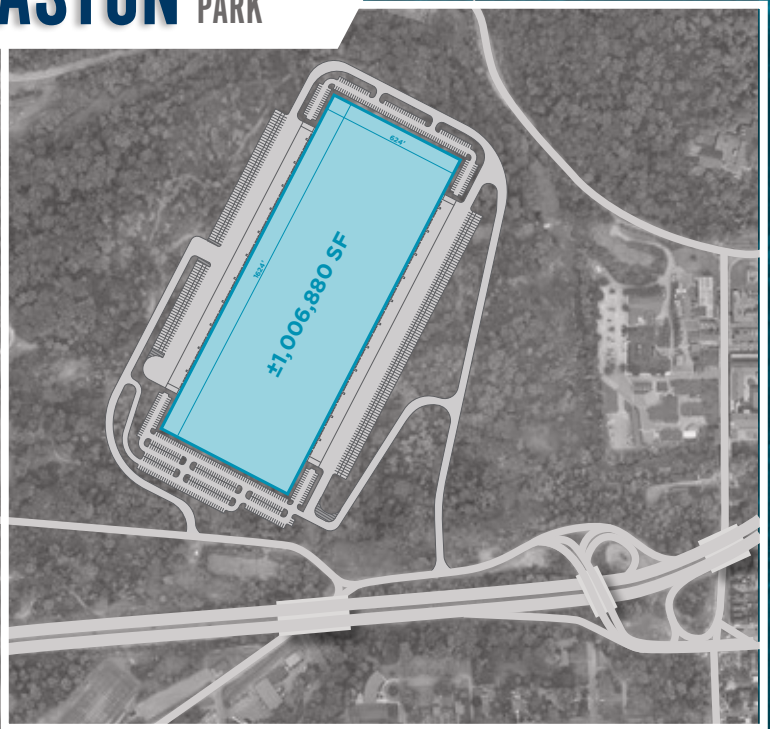
**EASTON** COMMERCE PARK

222

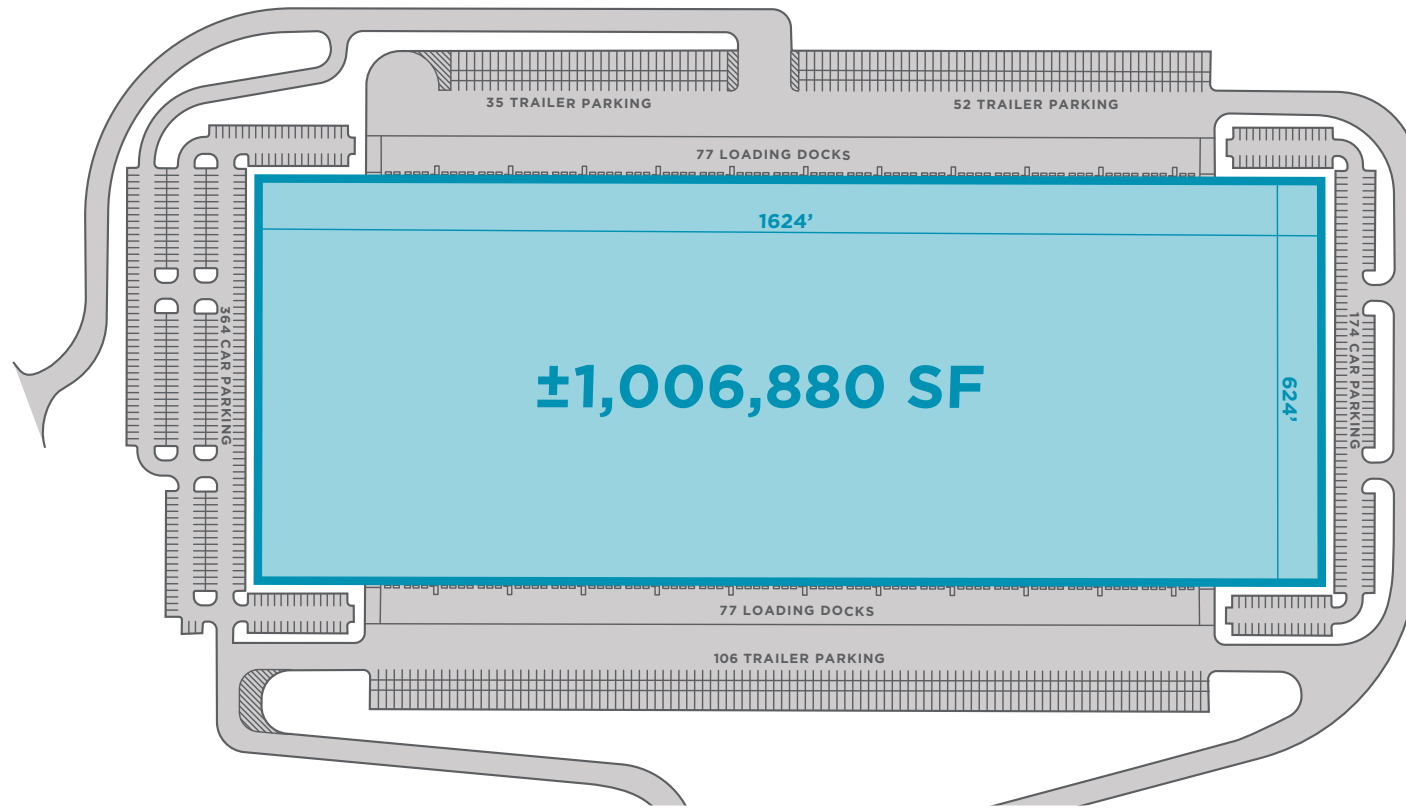
KUTZTOWN

476

100

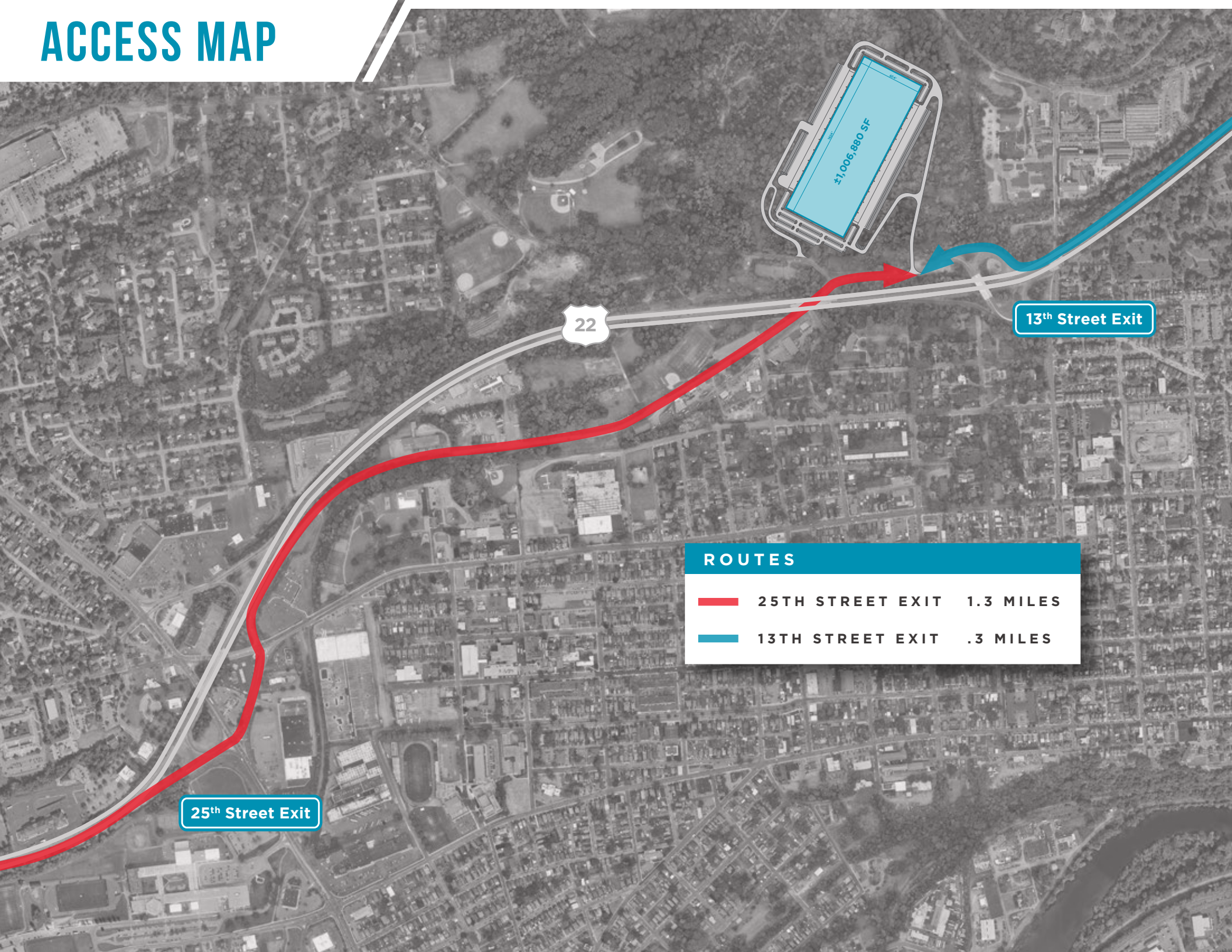


# BUILDING SPECS



<b>TOTAL BUILDING SF</b>	±1,006,880	<b>CAR PARKING SPACES</b>	538 SPACES
<b>OFFICE SF</b>	TBD	<b>TRAILER PARKING SPACES</b>	193 SPACES
<b>DIMENSIONS</b>	1624' X 624'	<b>DRIVE-IN DOORS</b>	4 DRIVE-IN DOORS
<b>ACRES</b>	TBD	<b>TRUCK COURT</b>	TBD
<b>CONFIGURATION</b>	CROSS-DOCK	<b>LIGHTING</b>	LED
<b>DOCK DOORS</b>	154 DOCK DOORS	<b>SPRINKLERS</b>	ESFR
<b>CLEAR HEIGHT</b>	40'		

# ACCESS MAP





#1,006,880 SF

22

13<sup>th</sup> Street Exit

25<sup>th</sup> Street Exit

ROUTES		
	25TH STREET EXIT	1.3 MILES
	13TH STREET EXIT	.3 MILES

# REGIONAL MAP

## DRIVE TIMES

PHILADELPHIA, PA	1 HR 38 MIN
NEW YORK, NY	2 HR 4 MIN
BALTIMORE, MD	3 HR 3 MIN
WASHINGTON D.C.	4 HR 3 MIN



**EASTON** COMMERCE PARK

# EASTON COMMERCE PARK



**Gerry Blinebury**

Executive Vice Chair

+1 717 231 7291

[gerry.blinebury@cushwake.com](mailto:gerry.blinebury@cushwake.com)

**Hunter Kessell**

Senior Associate

+1 610 589 0639

[hunter.kessell@cushwake.com](mailto:hunter.kessell@cushwake.com)

**Collin Potter**

Director

+1 717 231 7460

[collin.potter@cushwake.com](mailto:collin.potter@cushwake.com)