

# 15 PARK ROW



P R E M I E R D O W N T O W N R E T A I L F L A G S H I P O P P O R T U N I T Y

## PREMISES

Ground A **655 SF**  
Ground B **5,968 SF**  
Mezzanine B **3,470 SF**

## ASKING RENT

Upon Request

## CEILING HEIGHTS

Ground A **17'**  
Ground B **17'**

## FRONTAGE

Ground A **TBD**  
Ground B **48'**

## COMMENTS

Home of the former J&R Music World

Steps from The Beekman Hotel, Zara Flagship and Fulton Transportation Hub servicing 21,671,684 riders across the A, C, J, Z, 4, 5, 2, 3 Subway lines

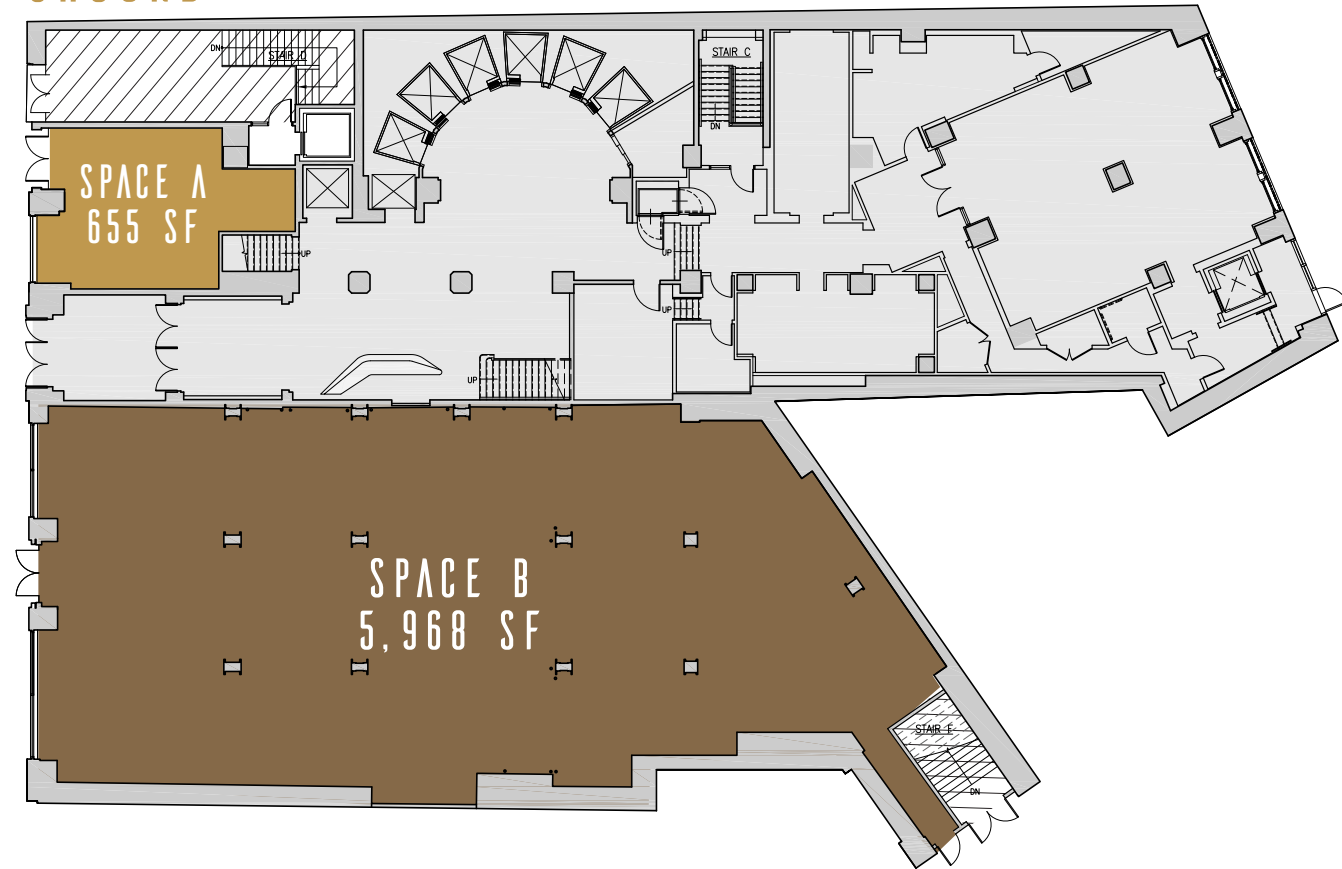
Base of a 339 unit high rise residential rental building

All uses considered

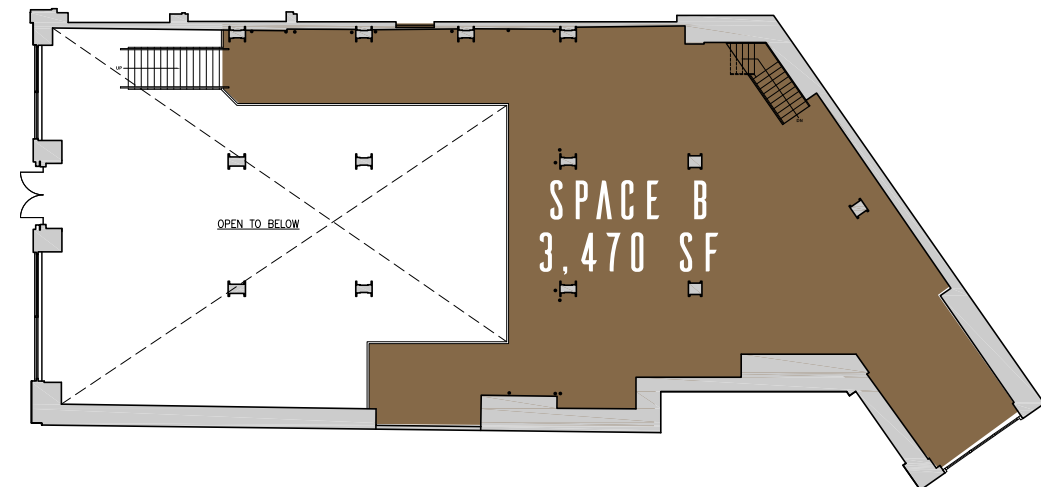
## NEIGHBORS

Zara, Chase, PNC Bank, Capital One, First National Bank, Citibank, Elf, Nobu, Starbucks, Aldo, Anthropologie, Birch, Irving Farm, Shake Shack, Temple Court and Augustine

## GROUND



## MEZZANINE



## LOGICAL DIVISIONS

Ground A **655 SF**  
Ground B **2,405 SF**  
Ground C **3,055 SF**  
Mezzanine B **3,470 SF**

## ASKING RENT

Upon Request

## CEILING HEIGHTS

Ground A **17'**  
Ground B **17'**  
Ground C **17'**

## FRONTAGE

Ground A **TBD**  
Ground B **TBD**  
Ground C **TBD**

## COMMENTS

Home of the former J&R Music World

Steps from The Beekman Hotel, Zara Flagship and Fulton Transportation Hub servicing 21,671,684 riders across the A, C, J, Z, 4, 5, 2, 3 Subway lines

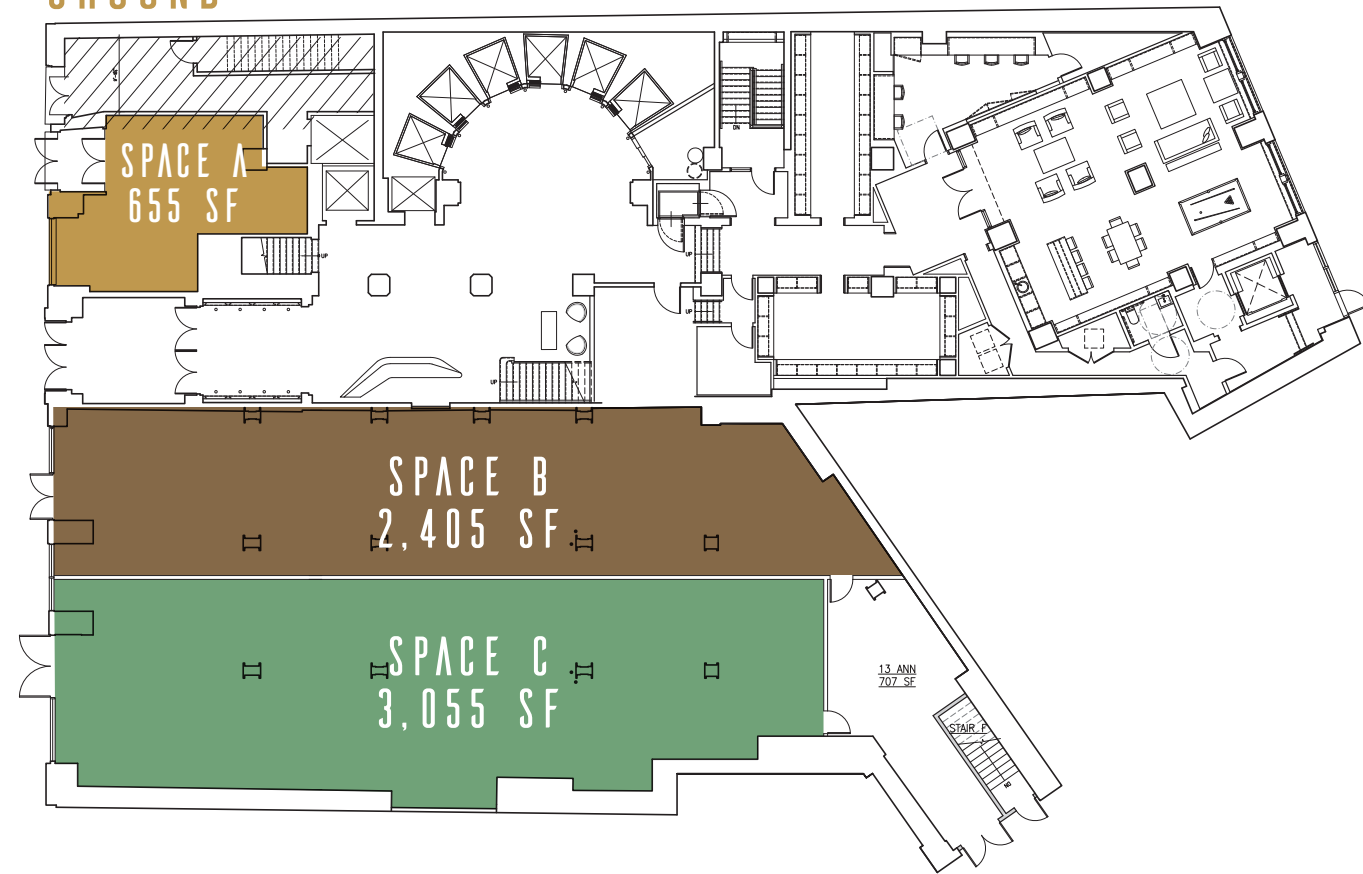
Base of a 339 unit high rise residential rental building

All uses considered

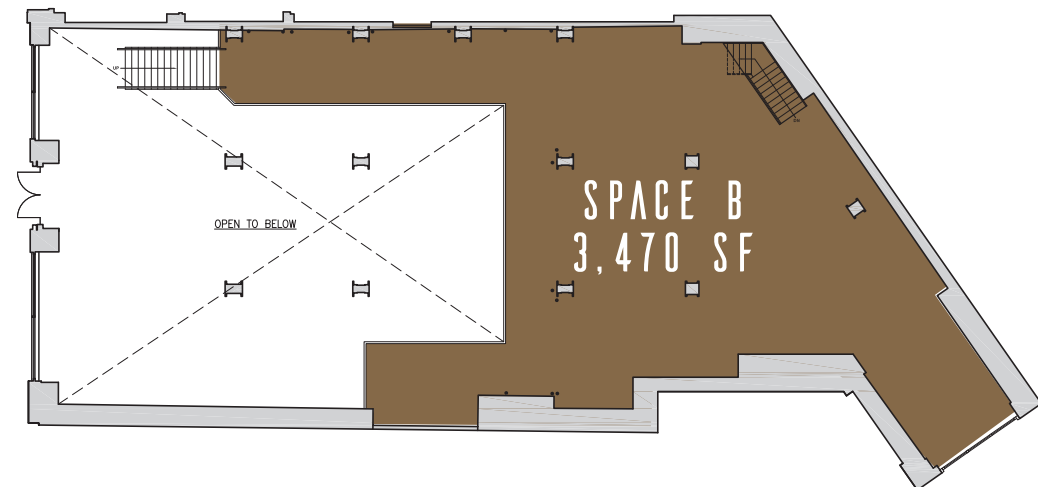
## NEIGHBORS

Zara, Chase, PNC Bank, Capital One, First National Bank, Citibank, Elf, Nobu, Starbucks, Aldo, Anthropologie, Birch, Irving Farm, Shake Shack, Temple Court and Augustine

## GROUND



## MEZZANINE





2,258,254 Riders

15 PARK ROW

16,910,084 Riders

21,671,684 Riders

2,713,532 Riders

6,708,745 Riders

# 15 PARK ROW

FOR MORE INFORMATION, PLEASE  
CONTACT

DIANA D. BOUTROSS

212 841 5097

[diana.boutross@cushwake.com](mailto:diana.boutross@cushwake.com)

