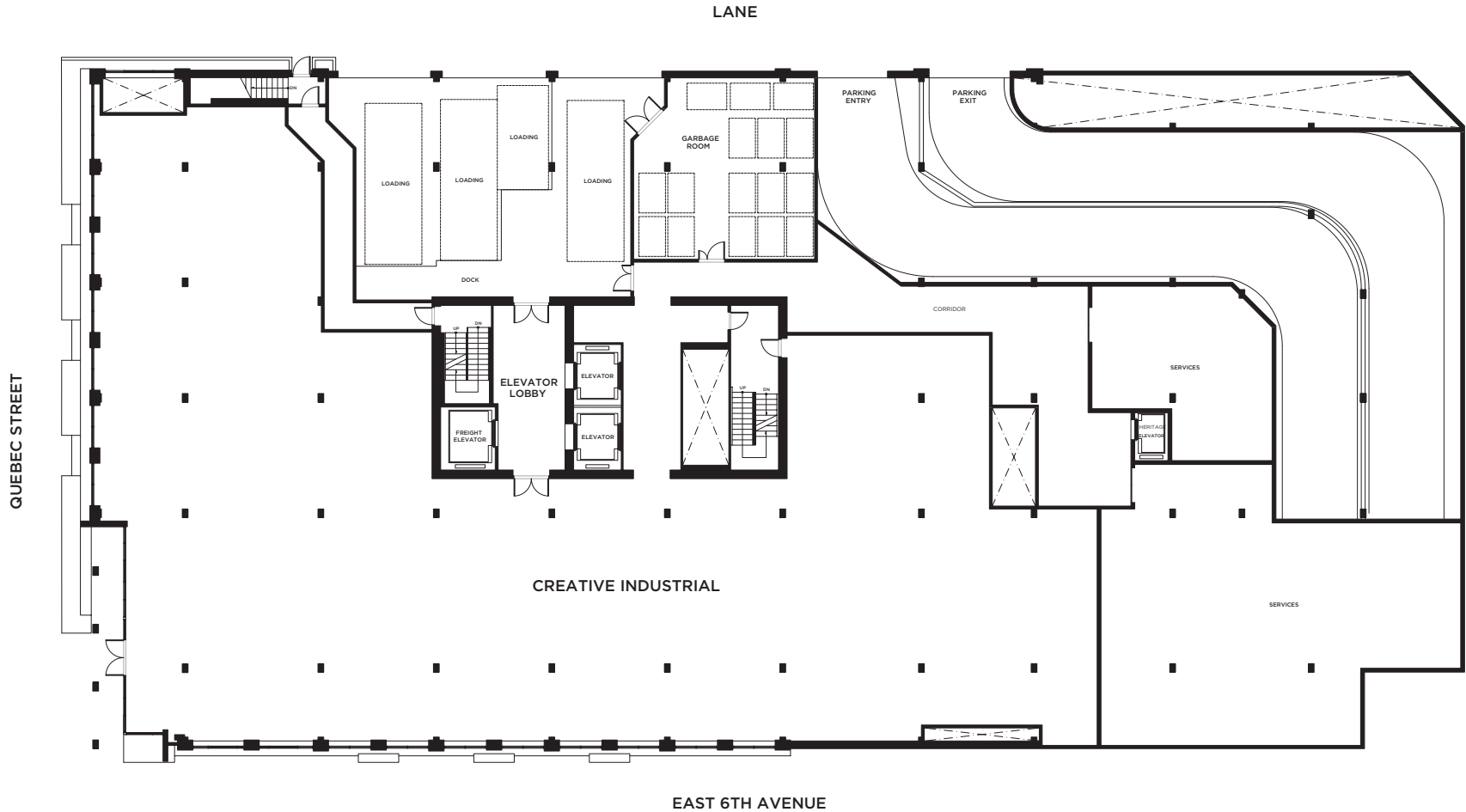


L1 CREATIVE INDUSTRIAL

T3



RENTABLE AREA (BOMA 96): 13,000 SF
FLOOR-TO-FLOOR HEIGHT: 17'6"

Hines

pcurban

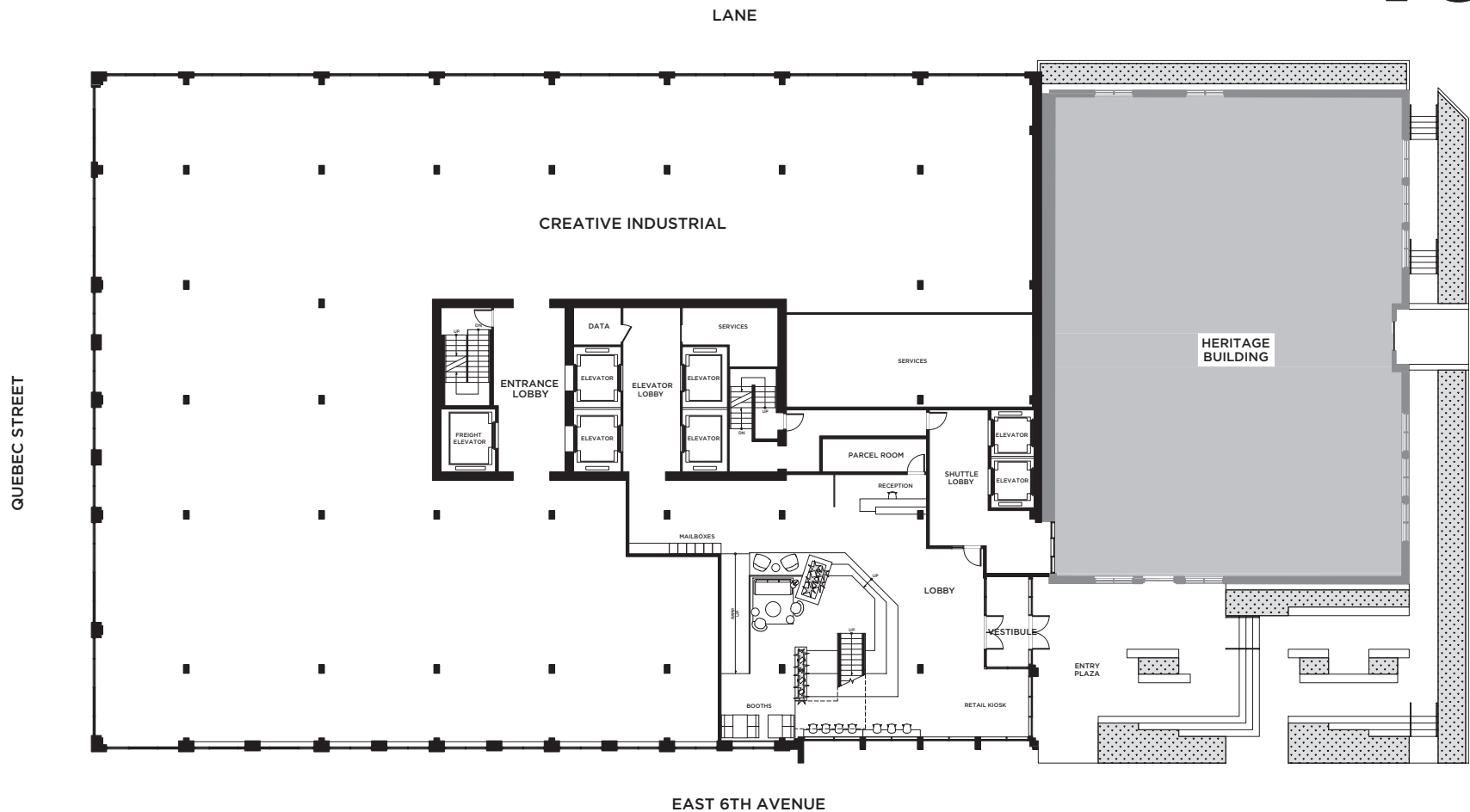
CUSHMAN & WAKEFIELD

123 E 6th Ave LP makes no representation or warranties, express or implied, with respect to the accuracy or completeness of the content, information, graphics, text, links, or other material contained and is not responsible for any errors or omissions in the content.



L2 CREATIVE INDUSTRIAL

T3



RENTABLE AREA (BOMA 96): 16,200 SF
FLOOR-TO-FLOOR HEIGHT: 12'3"

Hines

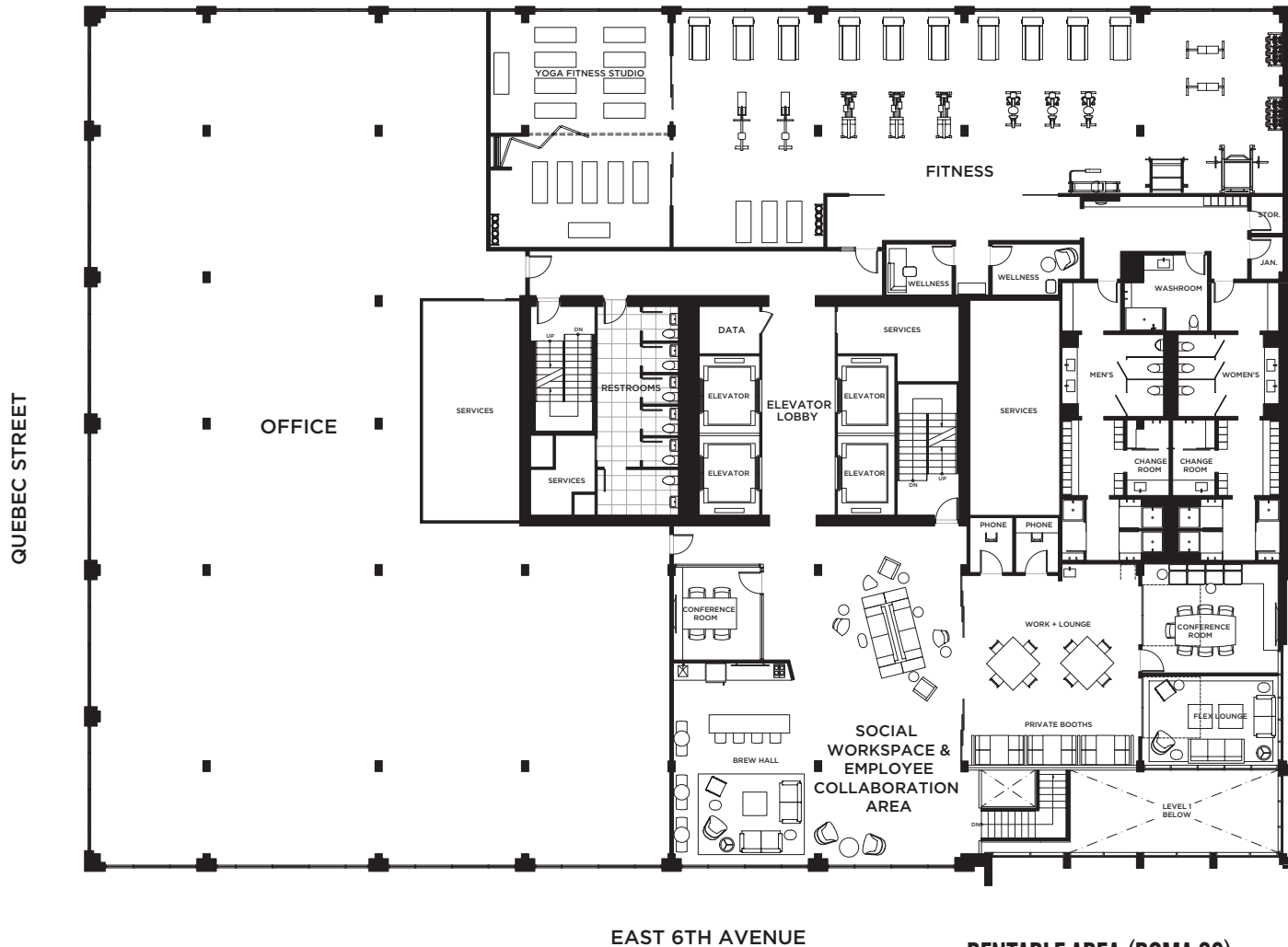
pcurban

CUSHMAN & WAKEFIELD

123 E 6th Ave LP makes no representation or warranties, express or implied, with respect to the accuracy or completeness of the content, information, graphics, text, links, or other material contained and is not responsible for any errors or omissions in the content.



L3 OFFICE



RENTABLE AREA (BOMA 96):
FLOOR-TO-FLOOR HEIGHT:

9,200 SF
 12'3"

Hines

pcurban



123 E 6th Ave LP makes no representation or warranties, express or implied, with respect to the accuracy or completeness of the content, information, graphics, text, links, or other material contained and is not responsible for any errors or omissions in the content.



L4-5 OFFICE

T3



RENTABLE AREA (BOMA 96): 20,600 SF
FLOOR-TO-FLOOR HEIGHT: 12'3"

Hines

pcurban

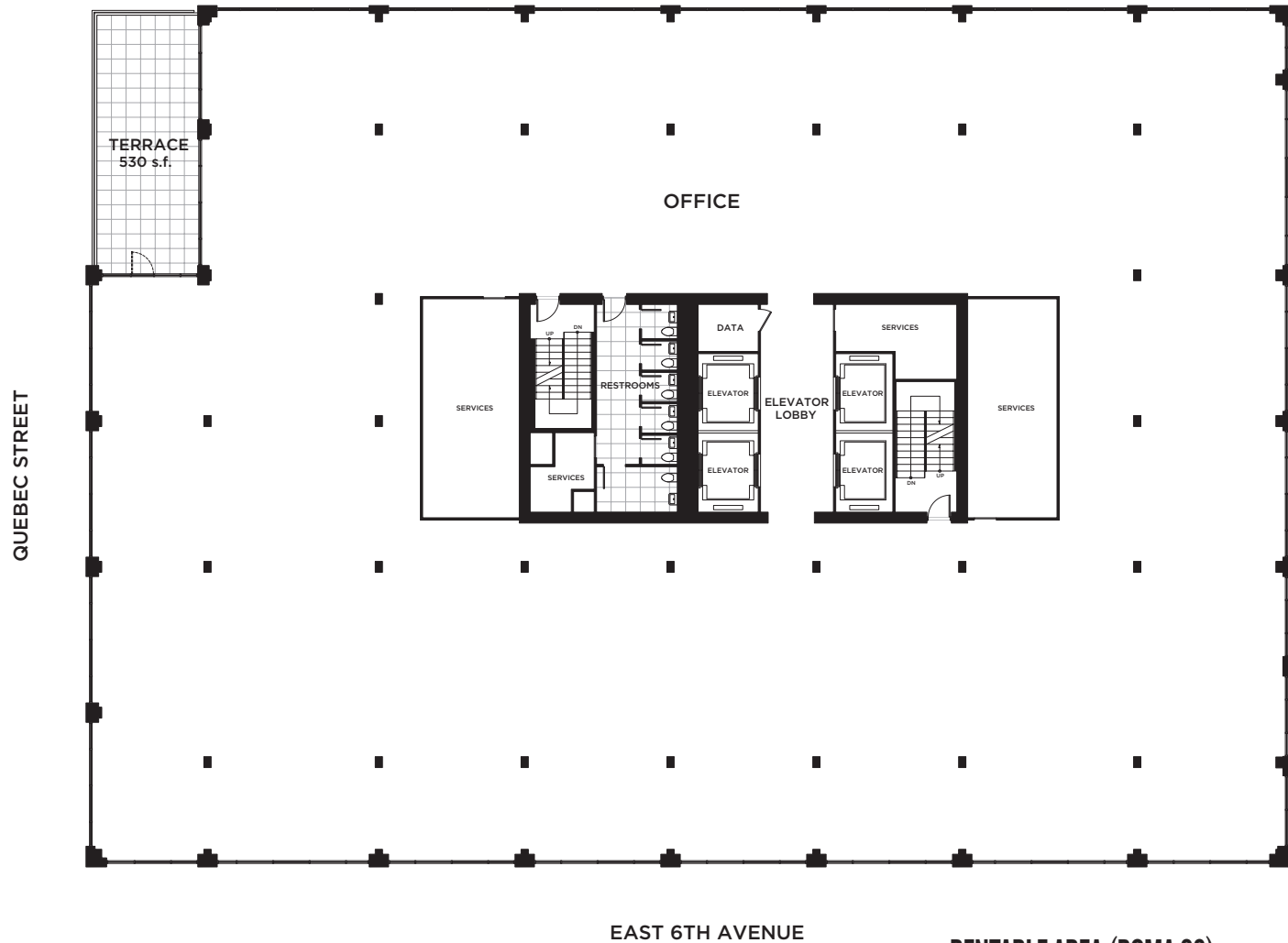
CUSHMAN & WAKEFIELD

123 E 6th Ave LP makes no representation or warranties, express or implied, with respect to the accuracy or completeness of the content, information, graphics, text, links, or other material contained and is not responsible for any errors or omissions in the content.



L6 OFFICE

T3



RENTABLE AREA (BOMA 96): 19,900 SF
FLOOR-TO-FLOOR HEIGHT: 12'3"

Hines

pcurban

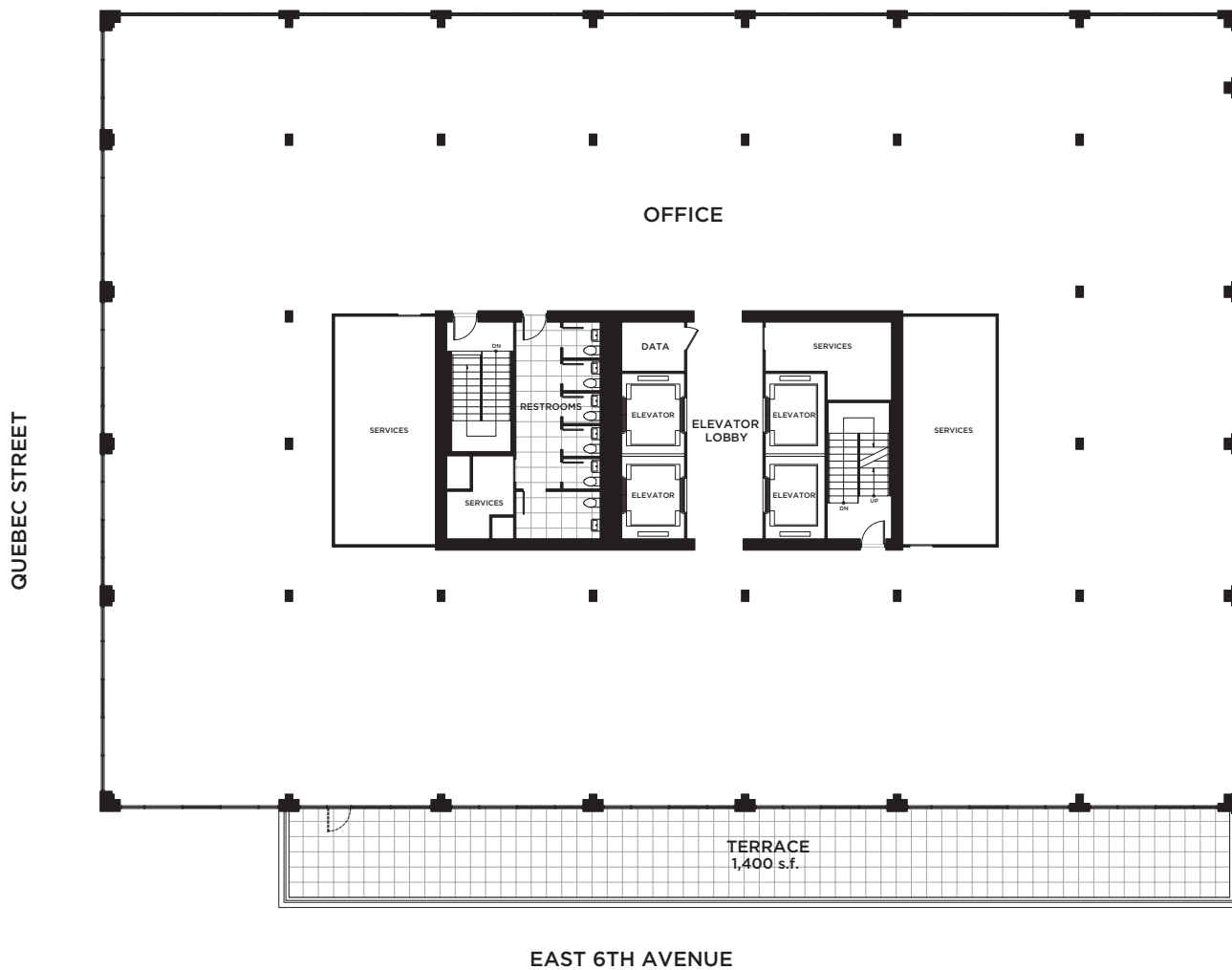
CUSHMAN & WAKEFIELD

123 E 6th Ave LP makes no representation or warranties, express or implied, with respect to the accuracy or completeness of the content, information, graphics, text, links, or other material contained and is not responsible for any errors or omissions in the content.



L8 OFFICE

T3



RENTABLE AREA (BOMA 96): 16,400 SF
FLOOR-TO-FLOOR HEIGHT: 12'3"

Hines

pcurban

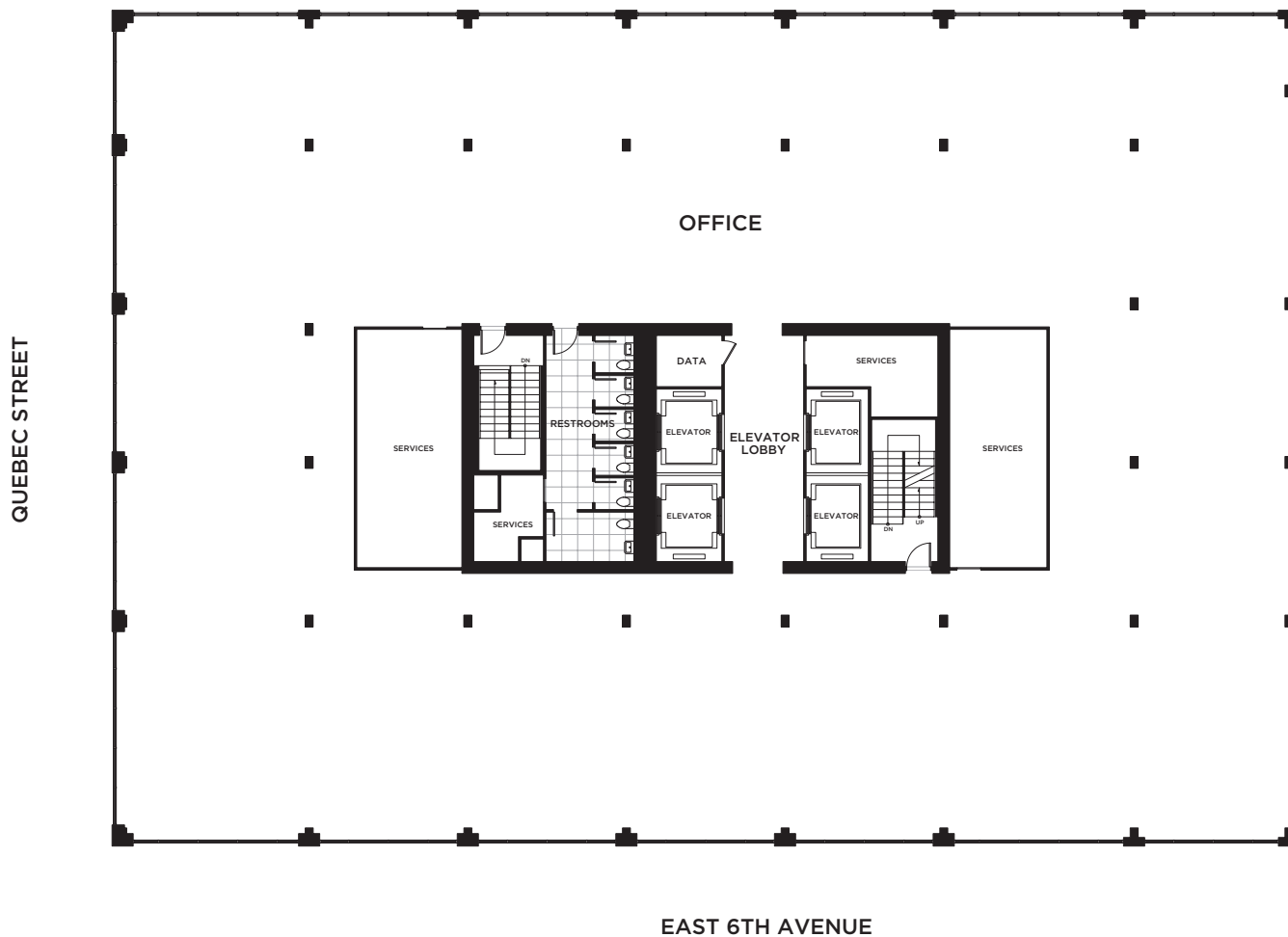
CUSHMAN & WAKEFIELD

123 E 6th Ave LP makes no representation or warranties, express or implied, with respect to the accuracy or completeness of the content, information, graphics, text, links, or other material contained and is not responsible for any errors or omissions in the content.

 NORTH

L9-10 OFFICE

T3



RENTABLE AREA (BOMA 96): 16,400 SF
FLOOR-TO-FLOOR HEIGHT: 12'3"

Hines

pcurban

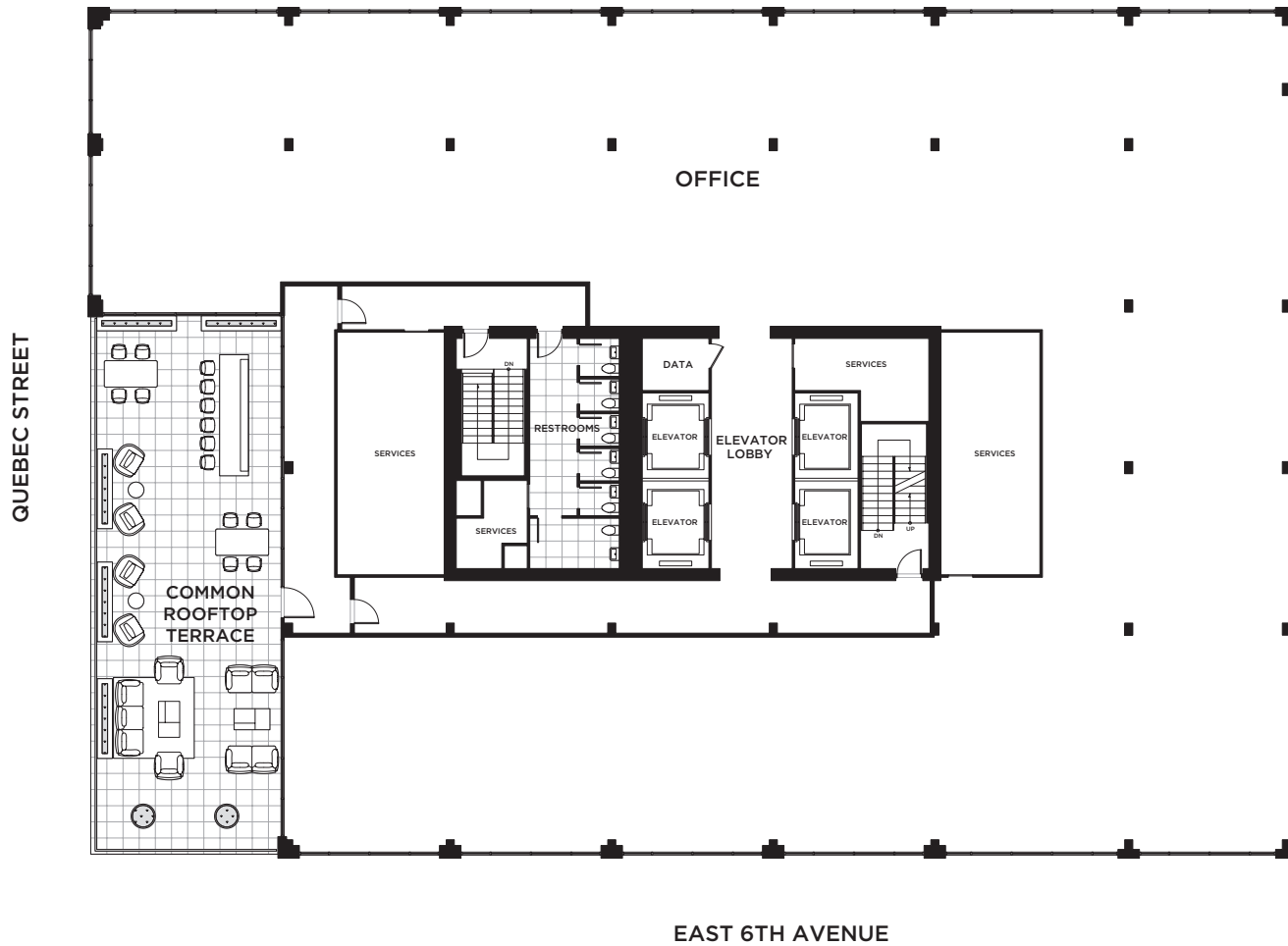
CUSHMAN & WAKEFIELD

123 E 6th Ave LP makes no representation or warranties, express or implied, with respect to the accuracy or completeness of the content, information, graphics, text, links, or other material contained and is not responsible for any errors or omissions in the content.

 NORTH

L11 DOUBLE HEIGHT OFFICE

T3



RENTABLE AREA (BOMA 96):
FLOOR-TO-FLOOR HEIGHT:

17,500 SF (including mezz)
25'0"

Hines

pcurban

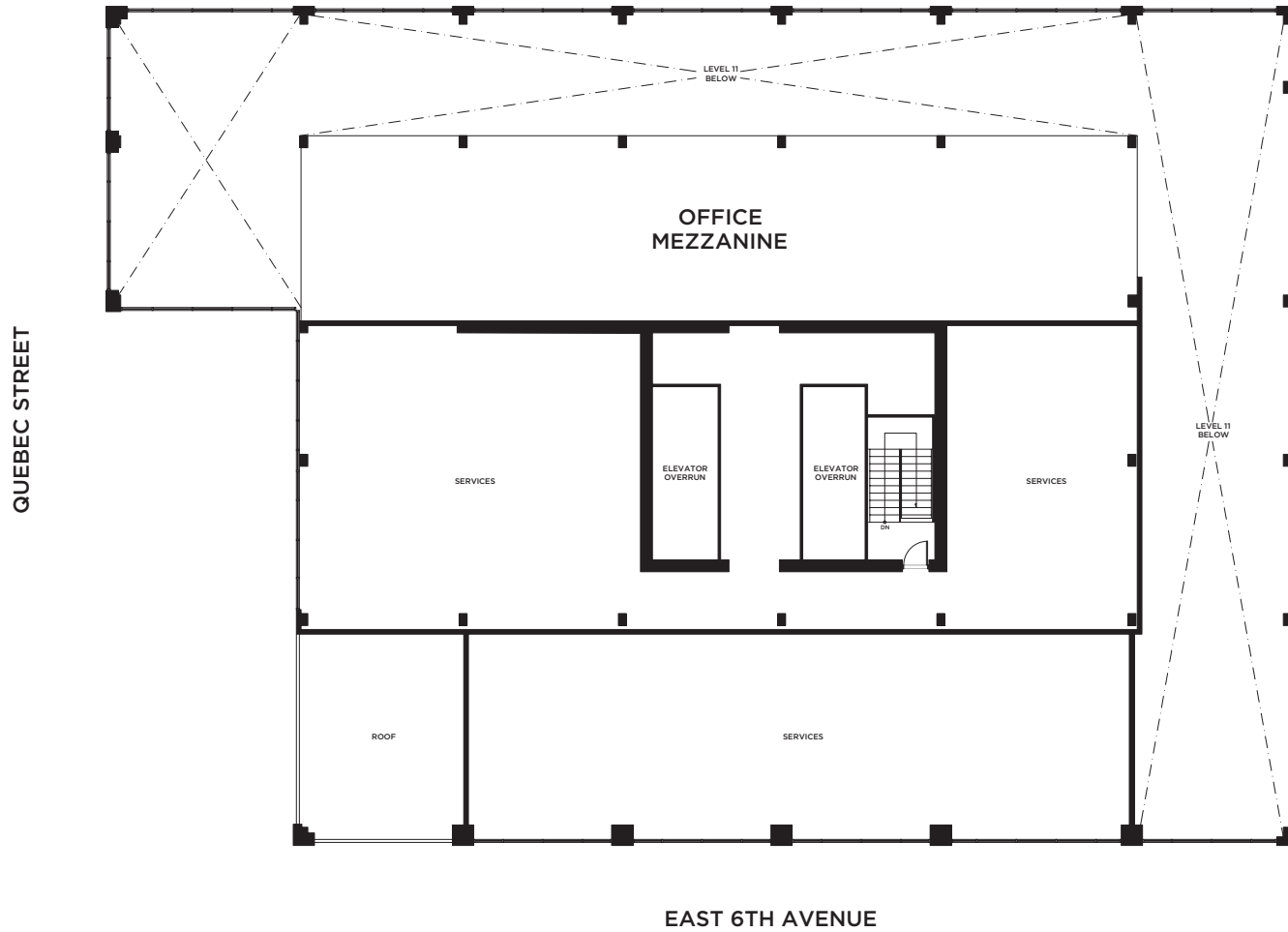
CUSHMAN & WAKEFIELD

123 E 6th Ave LP makes no representation or warranties, express or implied, with respect to the accuracy or completeness of the content, information, graphics, text, links, or other material contained and is not responsible for any errors or omissions in the content.

 NORTH

MEZZANINE

T3



RENTABLE AREA (BOMA 96): 2,800 SF
FLOOR-TO-FLOOR HEIGHT: 13'6"

Hines

pcurban

CUSHMAN & WAKEFIELD

123 E 6th Ave LP makes no representation or warranties, express or implied, with respect to the accuracy or completeness of the content, information, graphics, text, links, or other material contained and is not responsible for any errors or omissions in the content.

