

±3,059 - ±13,280 SF FOR LEASE



**CUSHMAN &
WAKEFIELD**

CAMPBELL
BUSINESS CENTER

743-747 CAMDEN AVENUE
CAMPBELL, CALIFORNIA

743 CAMDEN AVENUE, SUITE A:
±10,221 SF

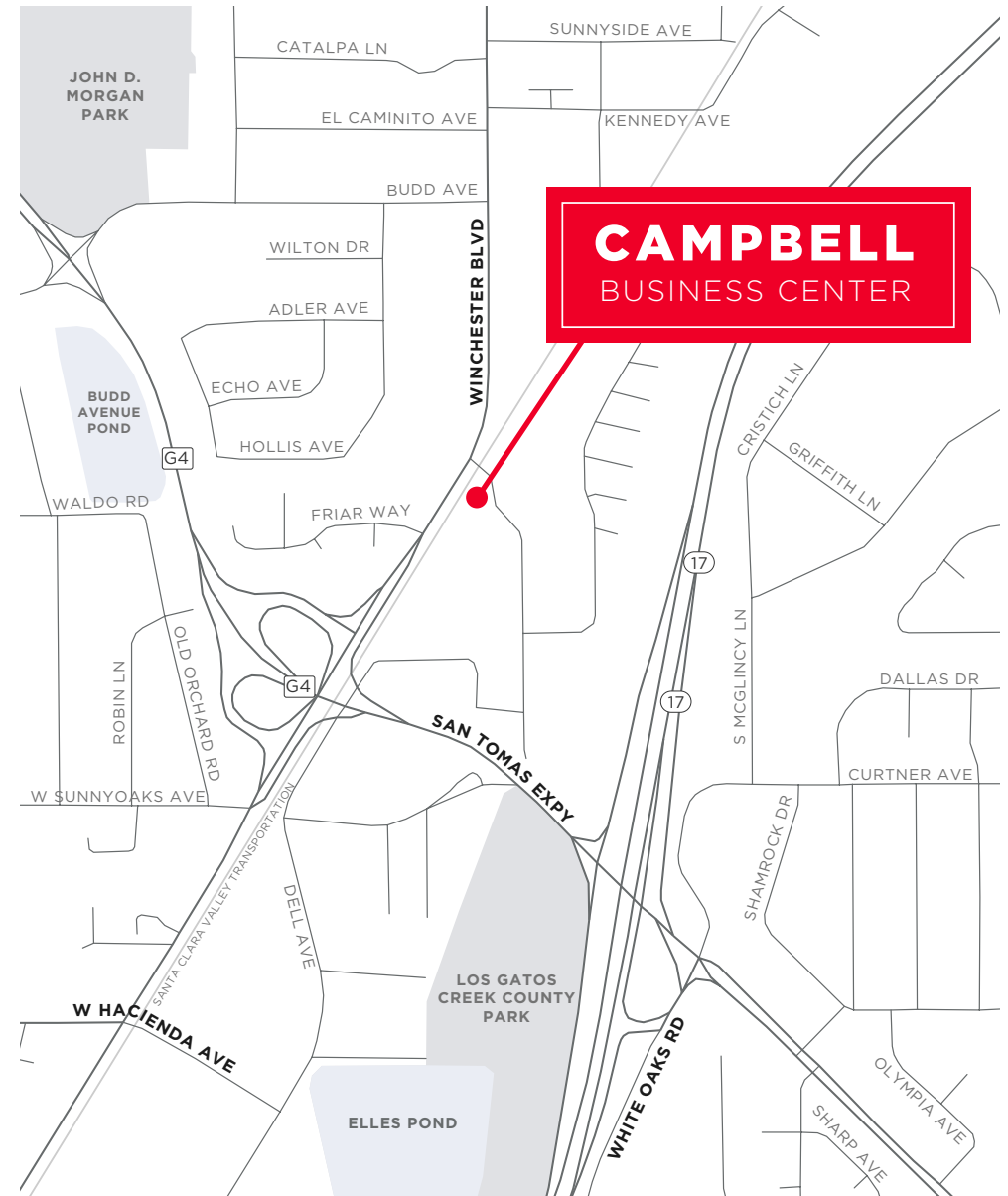
743 CAMDEN AVENUE, SUITE B:
±3,059 SF (CONTIGUOUS FOR ±13,280 SF)

747 CAMDEN AVENUE, SUITE A:
±4,050 SF

747 CAMDEN AVENUE, SUITE C:
±7,680 SF (CONTIGUOUS FOR ±11,730 SF)

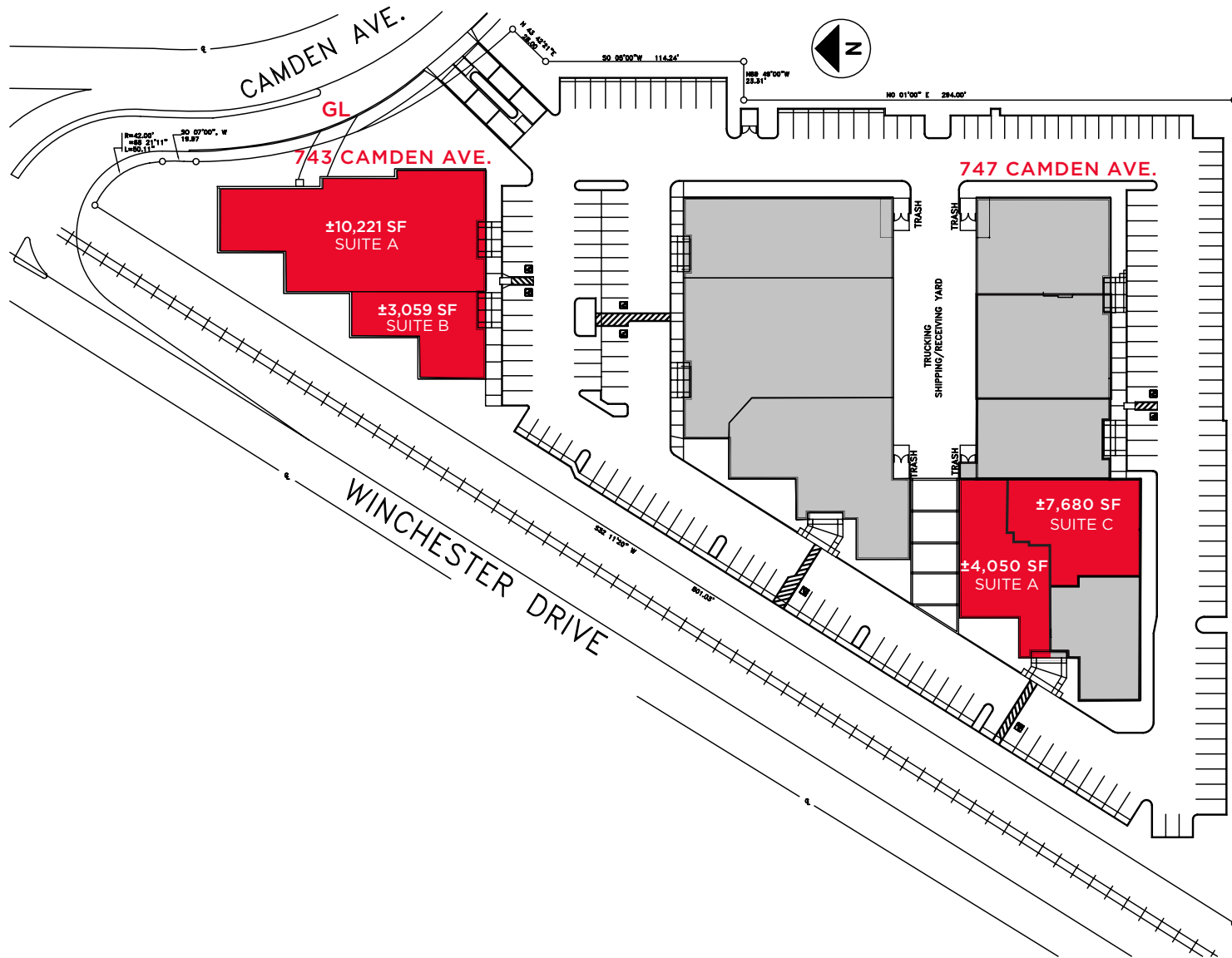
HIGHLIGHTS

- Single Story R&D Buildings
- Up to ±18 ft Clear Height
- Open Office with Mix of Labs and Warehouse
- 3.12/1,000 Parking
- Rear Grade Level Loading
- Building and Monument Signage Available
- On-site Expansion within the Project



743-747 CAMDEN AVENUE
CAMPBELL, CALIFORNIA

SITE PLAN



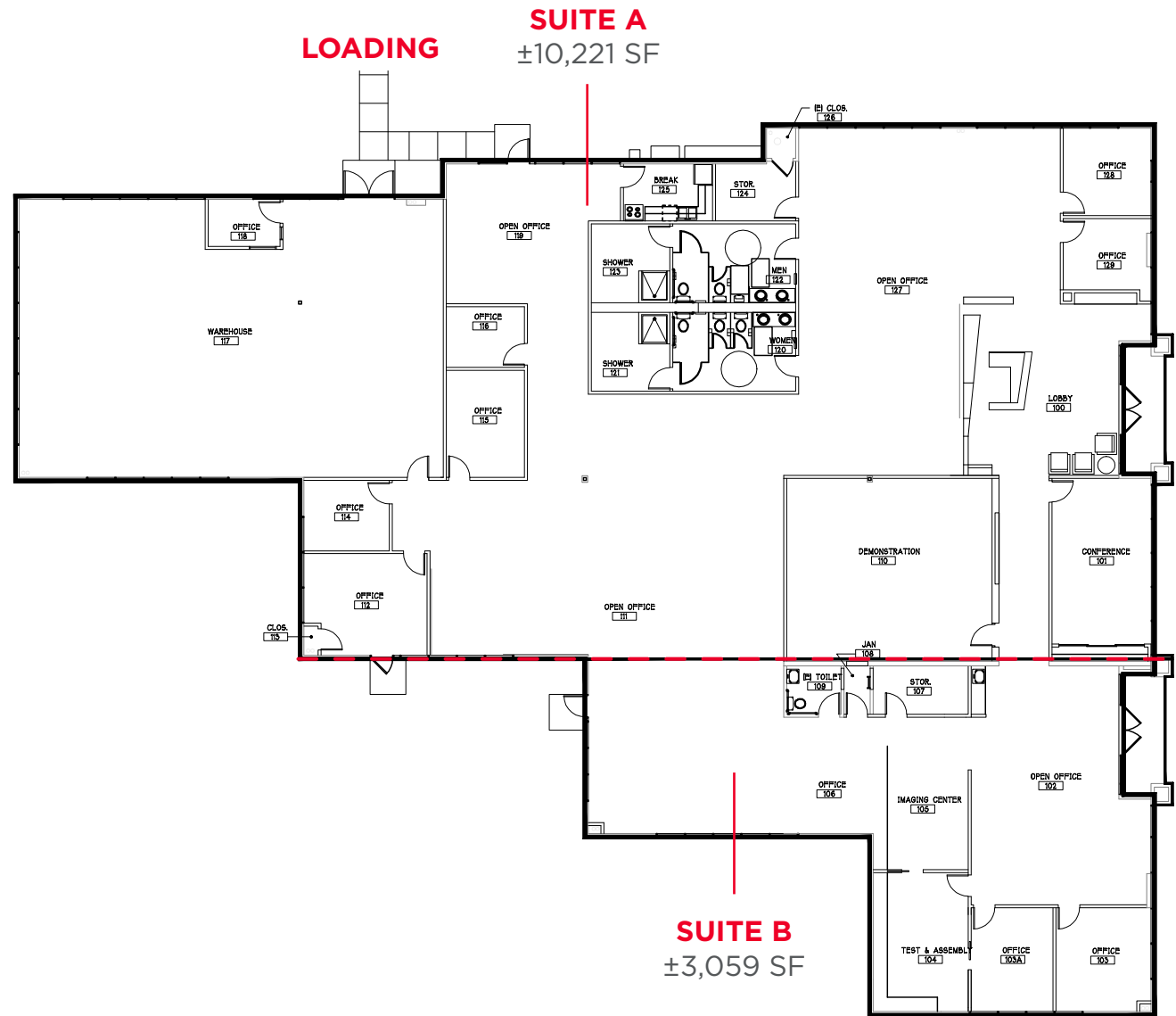
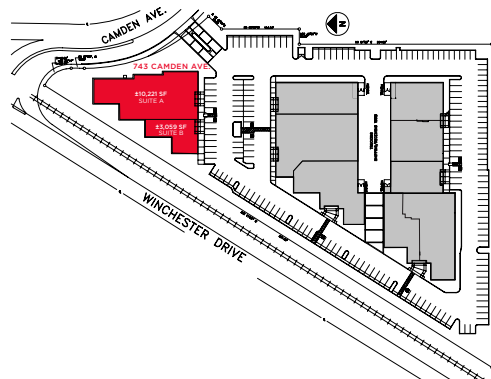
743-747 CAMDEN AVENUE
CAMPBELL, CALIFORNIA

**743 Camden Avenue,
Suite A: ±10,221 SF**

**743 Camden Avenue,
Suite B: ±3,059 SF**

***Contiguous for ±13,280 SF**

- 10 Private Offices
- Conference Room
- Large Open Floor Plan
- Breakroom / Kitchen
- Restrooms with Showers
- Warehouse
- Storage Rooms



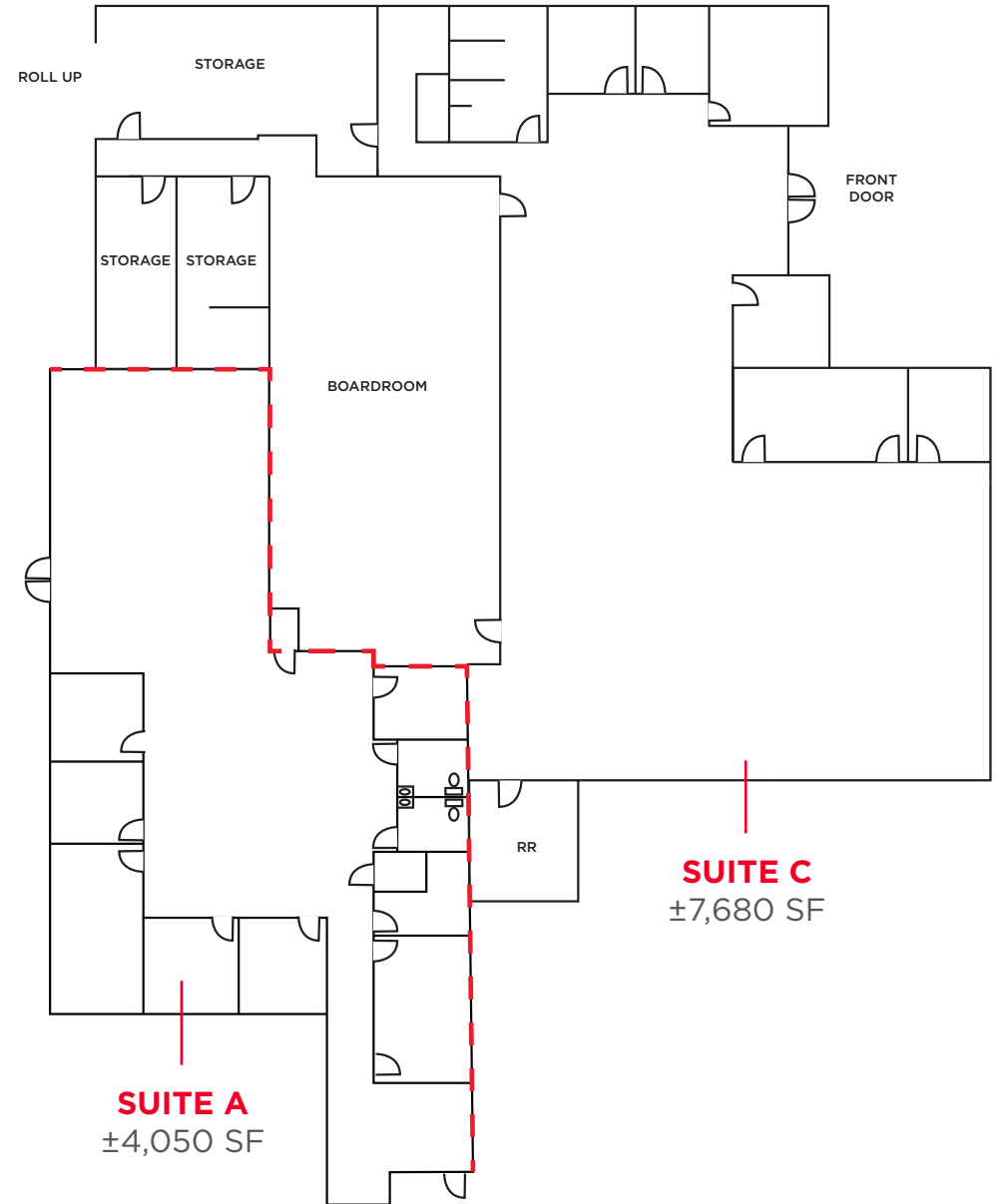
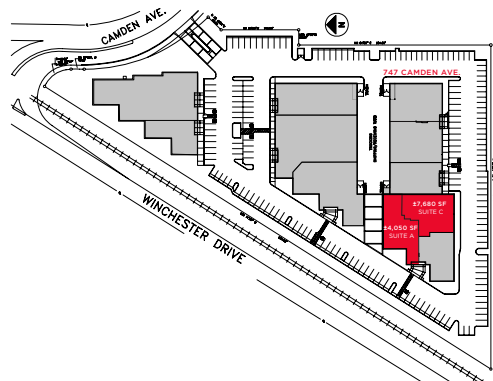
FLOOR PLAN

**747 Camden Avenue,
Suite A: ±4,050 SF**

**747 Camden Avenue,
Suite C: ±7,680 SF**

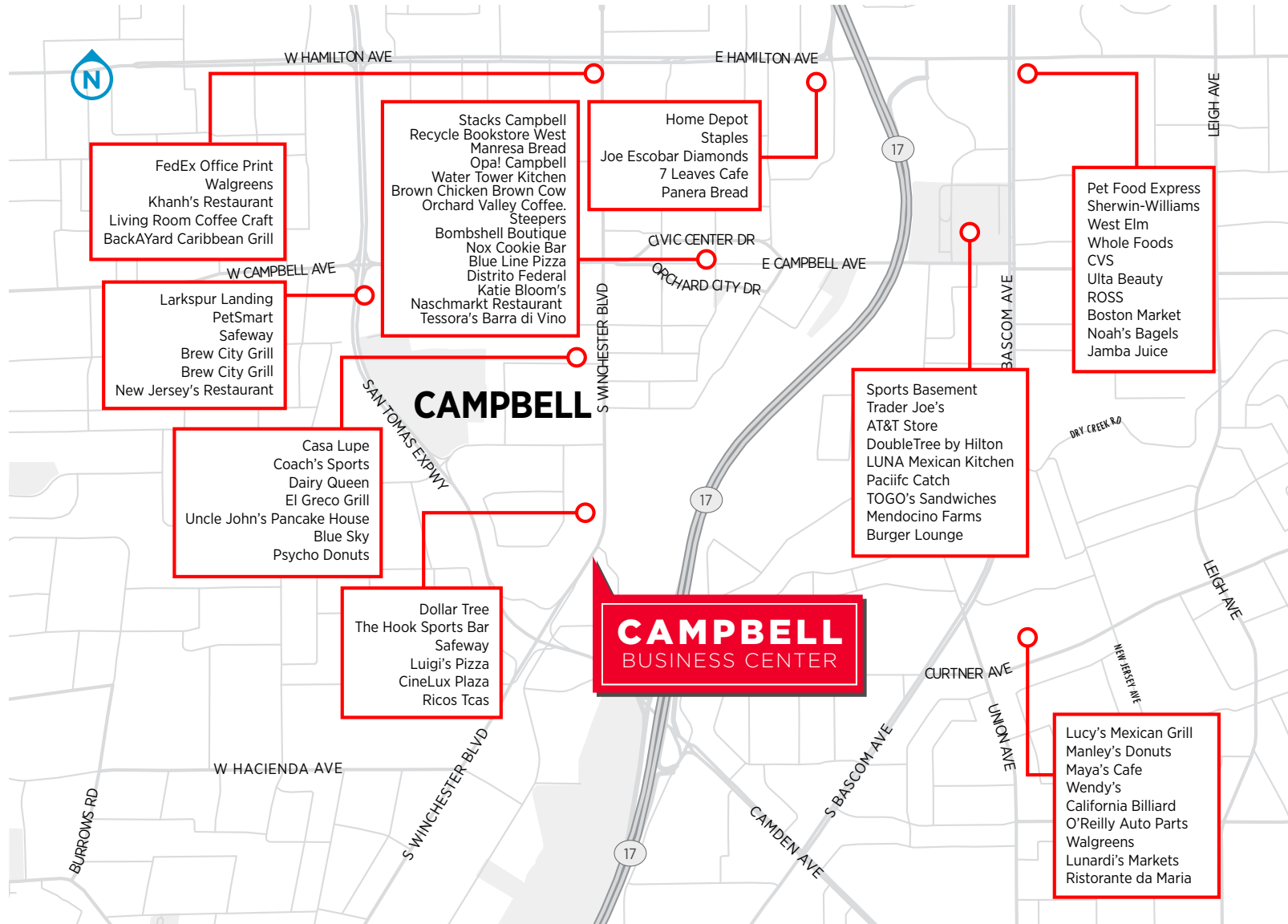
***Contiguous for ±11,730 SF**

- Showers
- Main Entrance Has Double Doors
- 12 Private Offices
- 2 Conference Rooms
- Large Boardroom
- Roll up Door
- Warehouse/Storage
- Breakroom / Kitchen
- Large Open Floor Plan



FLOOR PLAN

AMENITIES



743-747 CAMDEN AVENUE
CAMPBELL, CALIFORNIA

CAMPBELL

BUSINESS CENTER

743 CAMDEN AVENUE, SUITE A:
±10,221 SF

743 CAMDEN AVENUE, SUITE B:
±3,059 SF *Contiguous for ±13,280 SF

747 CAMDEN AVENUE, SUITE A:
±4,050 SF

747 CAMDEN AVENUE, SUITE C:
±7,680 SF *Contiguous for ±11,730 SF

Jon DeCoite

+1 408 615 3408

jon.decoite@cushwake.com

LIC #01471300

Erik Hallgrimson

+1 408 615 3435

erik.hallgrimson@cushwake.com

LIC #01274540

Dolores Estrada

+1 408 436 3640

dolores.estrada@cushwake.com

LIC #0208380

