

# LAND FOR SALE

2.094 ACRES LAND (APN# 237-03-044)  
Oakland Road, San Jose, CA

**Drew Arvay**

+1 408 436 3647

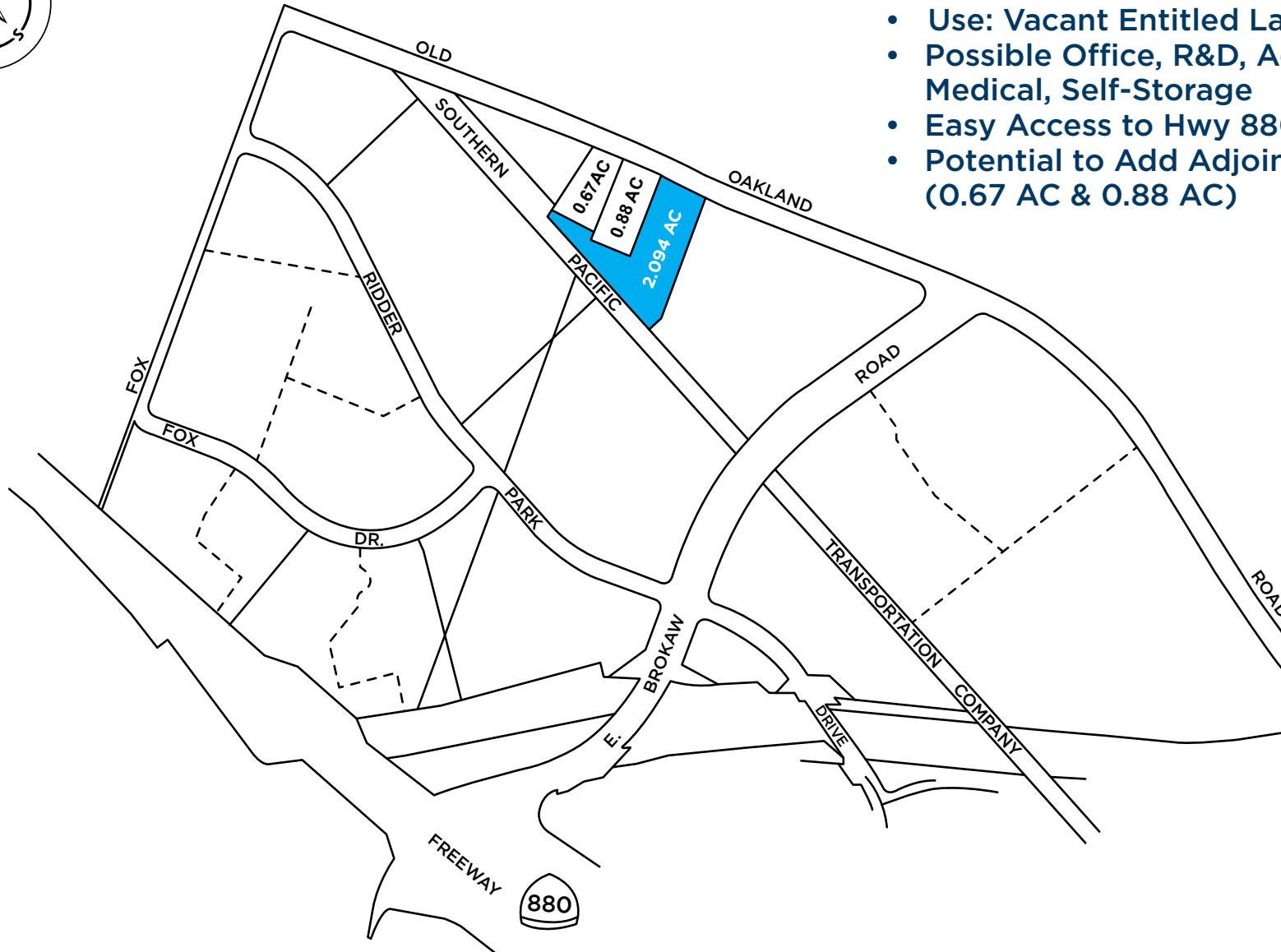
drew.arvay@cushwake.com

LIC #00511262





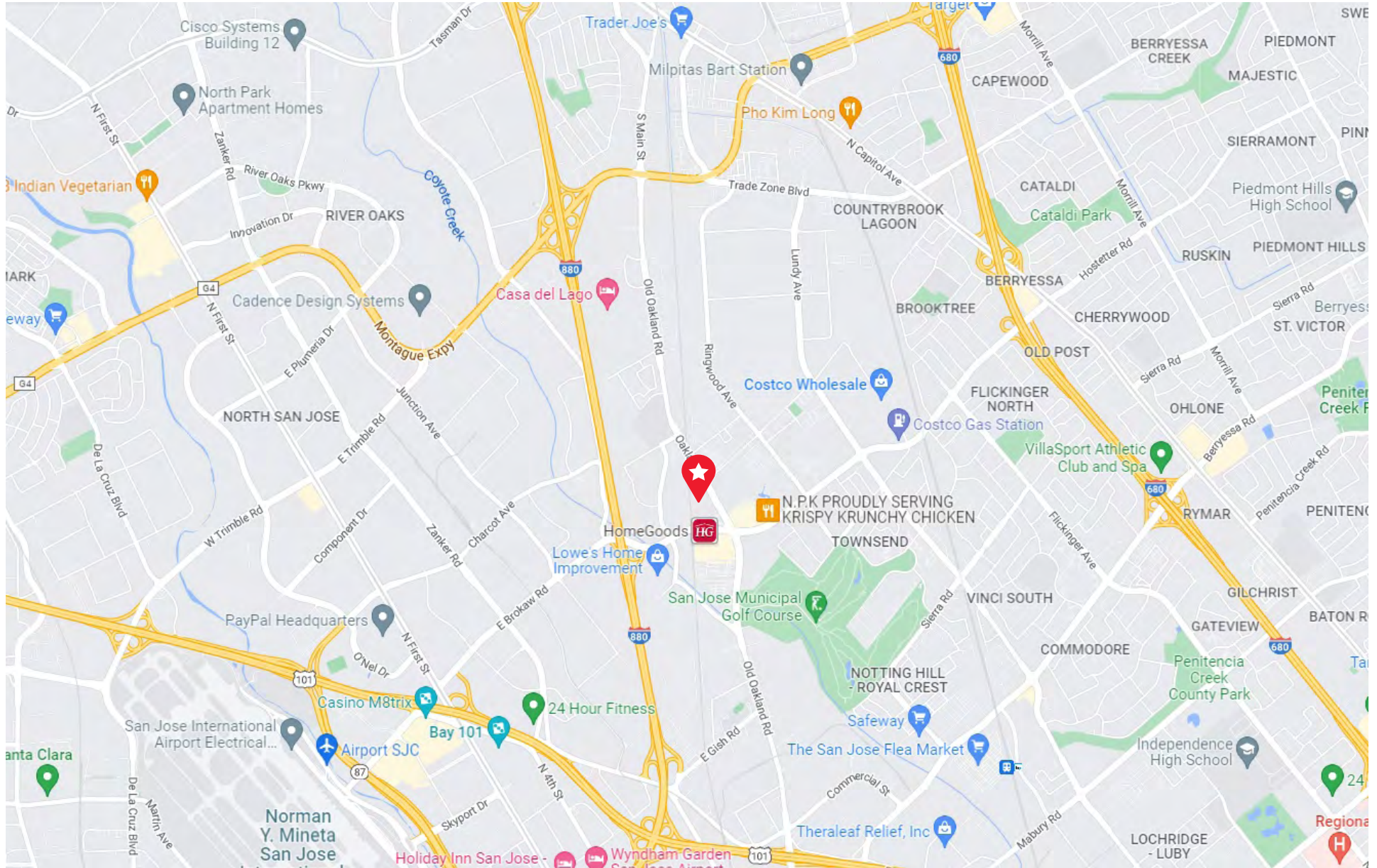
# PROPERTY HIGHLIGHTS



- 2.094 Acres of Land
- Asking Price \$7,000,000
- (\$76.74 per Land Foot)
- Zoning: IP
- Use: Vacant Entitled Land
- Possible Office, R&D, Advanced Mfg, Medical, Self-Storage
- Easy Access to Hwy 880 & Hwy 101
- Potential to Add Adjoining Properties (0.67 AC & 0.88 AC)

# STREET MAP

**Oakland Rd**  
San Jose, CA







This is a unique opportunity to acquire a 2.094 acre parcel in North San Jose. This property has excellent access to the Brokaw Exit of Hwy 880, just a quarter mile away. Neighboring property is a Retail Center with amenities including multiple food services, a City Sports Fitness Center, Chase Bank, and a UPS store. The “IP” Zoning allows Buyer to pursue a variety of development alternatives, some of which include Office/R&D, Advanced Manufacturing, Medical Office, Retail and Self-Storage, just to identify a few. This site sits amidst some of the largest Corporate employers in Silicon Valley including Apple, Google, Samsung, Amazon, Cisco, Western Digital, Infineon and eBay. The surrounding neighborhoods have gone through major redevelopment over the recent years. There are several new home developments and new Commercial Retail being developed. The immediate neighboring sites are separately owned and have entertained potential sale in the past (these would be independent inquiries).

## LAND FOR SALE

**2.094 ACRES LAND (APN# 237-03-044)**  
Oakland Road, San Jose, CA

## CONTACT

**Drew Arvay**

+1 408 436 3647

drew.arvay@cushwake.com

LIC #00511262



[View Site Specific COVID 19 Prevention Plan](#)

©2022 Cushman & Wakefield. All rights reserved. The information contained in this communication is strictly confidential. This information has been obtained from sources believed to be reliable but has not been verified. NO WARRANTY OR REPRESENTATION, EXPRESS OR IMPLIED, IS MADE AS TO THE CONDITION OF THE PROPERTY (OR PROPERTIES) REFERENCED HEREIN OR AS TO THE ACCURACY OR COMPLETENESS OF THE INFORMATION CONTAINED HEREIN, AND SAME IS SUBMITTED SUBJECT TO ERRORS, OMISSIONS, CHANGE OF PRICE, RENTAL OR OTHER CONDITIONS, WITHDRAWAL WITHOUT NOTICE, AND TO ANY SPECIAL LISTING CONDITIONS IMPOSED BY THE PROPERTY OWNER(S). ANY PROJECTIONS, OPINIONS OR ESTIMATES ARE SUBJECT TO UNCERTAINTY AND DO NOT SIGNIFY CURRENT OR FUTURE PROPERTY PERFORMANCE.