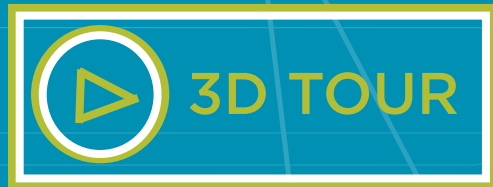




# CONCOURSE

226 AIRPORT PARKWAY, SAN JOSE, CA

CLASS A SUBLEASE  
±12,922 SF





# PROPERTY HIGHLIGHTS



**Flexible Growth Opportunities  
within 2.6 Million SF Portfolio**



**Adjacent to San Jose International Airport  
with Free Airport Shuttle Every 15 Minutes**



**Close Access to Highways 101/280/87  
& Interstate 880. Caltrain & VTA**



**On-Site Security &  
Property Management**

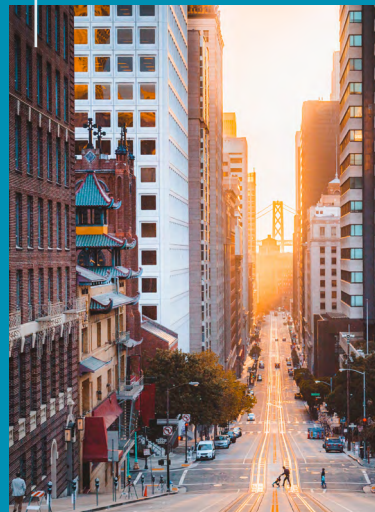


**Free Surface & Secured  
Garage Parking**

**Walking distance to 25 Restaurants, 5 Hotels,  
Retail Services & Public Transportation**



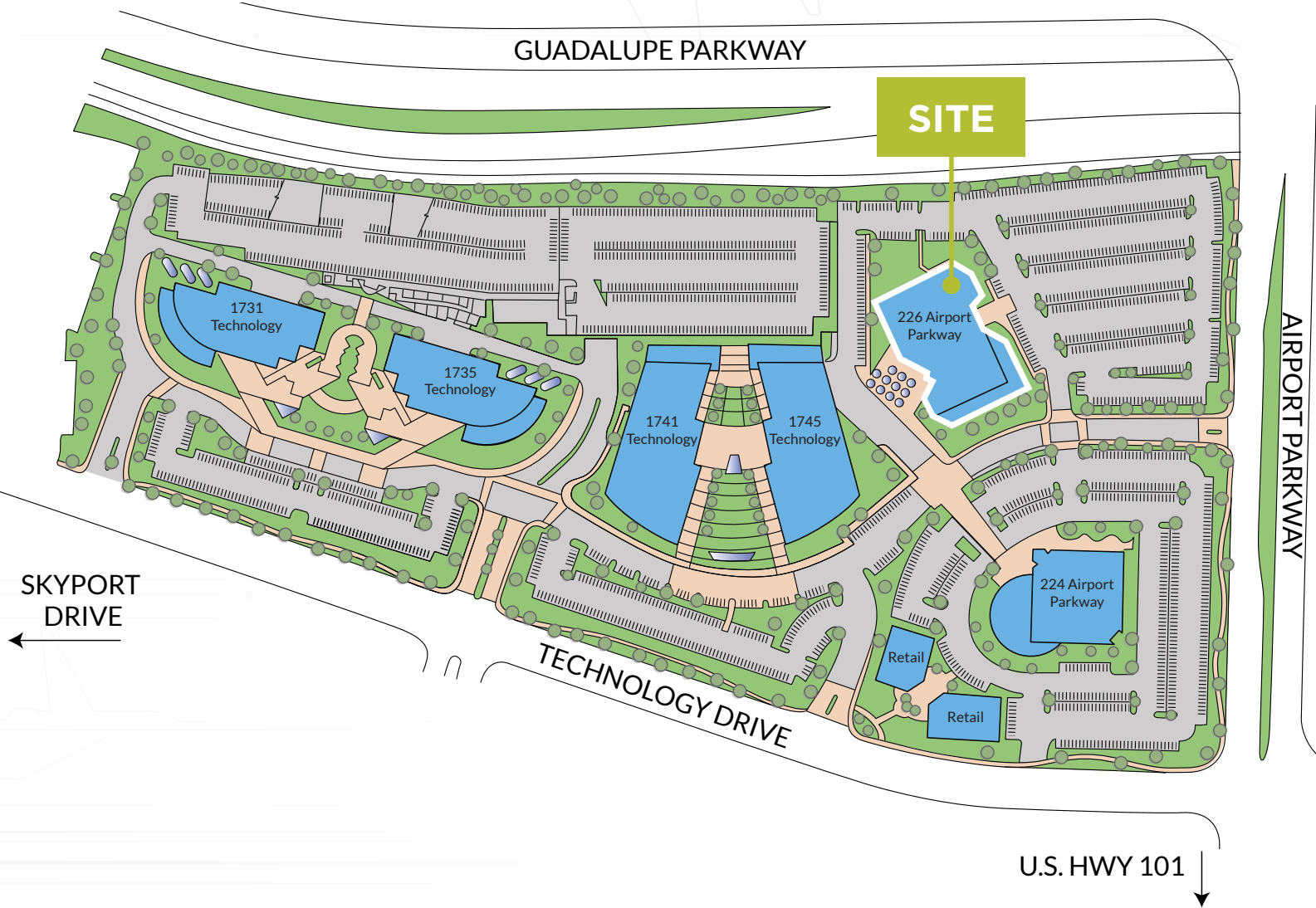
**Prominent Silicon  
Valley Location**



**Free Conference Rooms &  
Fitness Center with Showers**



# SITE PLAN



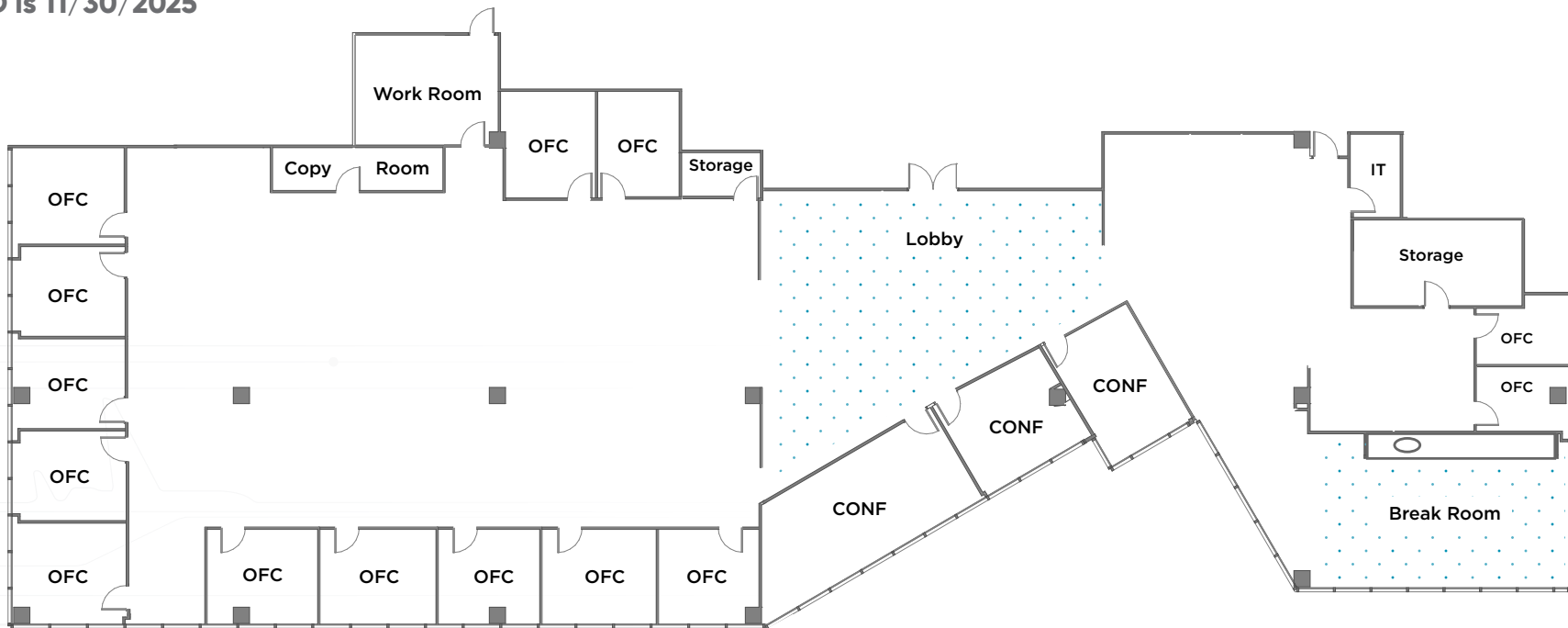






# FLOOR PLAN

- Suite #200
- ±12,922 SF
- Open Ceiling Lobby
- 14 Offices
- 3 Conference Rooms
- Boardroom
- Large Break Room
- Work Room
- Expansive Open Office
- LED is 11/30/2025



Polished Concrete



# LOCAL AMENITIES

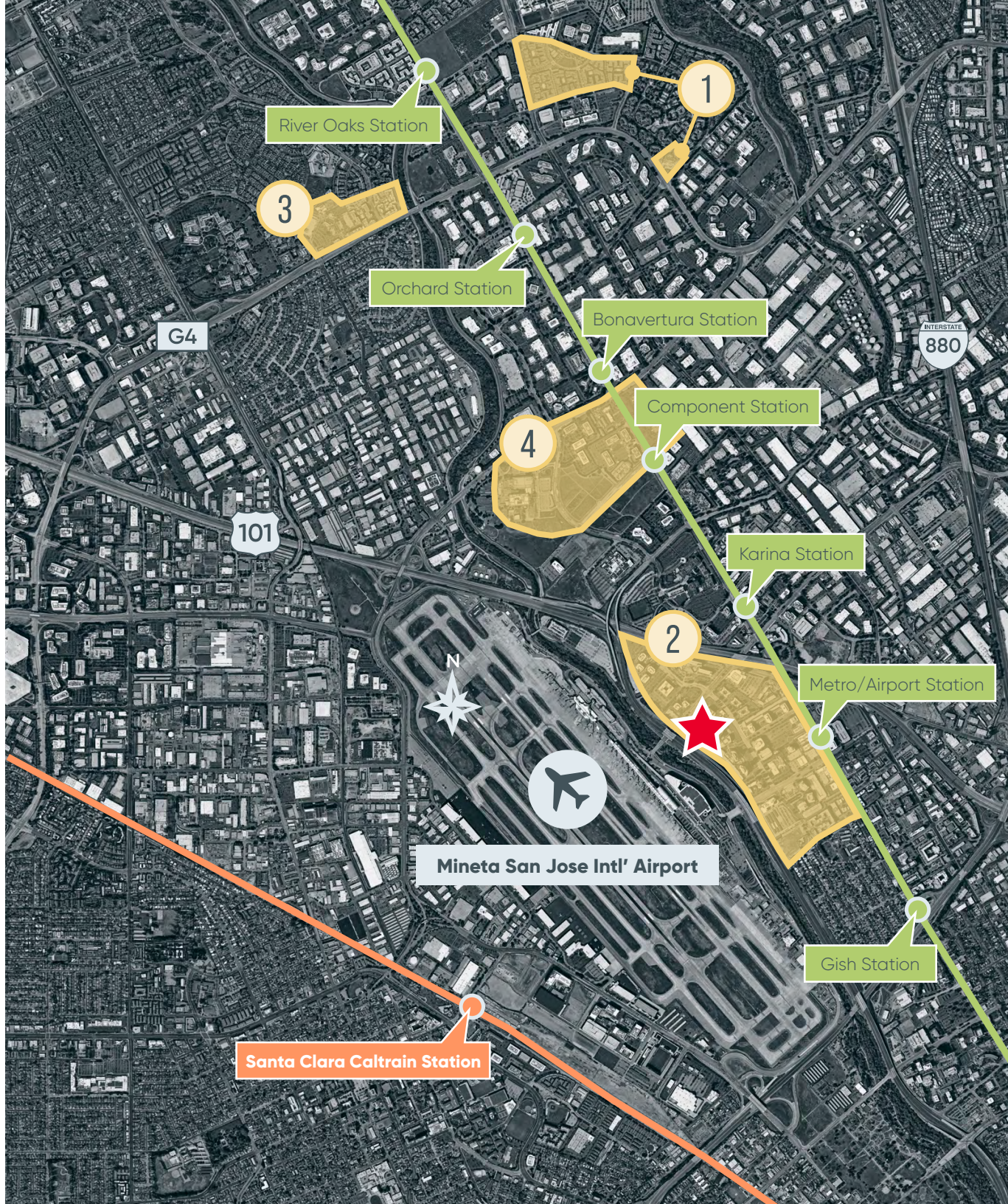
- 1  
 Hobees  
 Premier Pizza  
 Una Mas!  
 Starbucks  
 Wahoo's  
 Patxi's Pizza

- 2  
 Spencer's Steak and Chops  
 Sonoma Chicken Coop  
 Booster Juice  
 Shagun Indian  
 Vito's New York Italian  
 Camille's Sidewalk Cafe  
 Quiznos  
 It's a Grind Coffe House  
 Ume Chinese Food  
 Madhuban Indian Cuisine  
 Cutting Board Deli  
 Bagel Street Cafe  
 Starbucks  
 Senior Jalapeno Taqueria  
 That's a Wrap  
 DD's Cafe  
 Star Cafe  
 Denny's  
 McDonalds  
 LeBoulangier  
 Zeytoun  
 Hawaiian Drive Inn  
 Chipotle  
 Red Brick Pizza  
 Subway

- 3  
 Jamba Juice  
 Quiznos Sub  
 Safeway  
 Baka Fresh  
 Red Robin  
 The Posh Bagel  
 Piatti  
 Yan Can Asian Bistro  
 McDonald's  
 Yo Yo Sushi Bar & Grill  
 Cold Stone  
 Mezbaan Indian Cuisine

- 4  
 Specialty's Cafe and Bakery  
 Honba Sushi  
 Subway  
 Starbucks  
 Pho Viet  
 Premier Pizza  
 Tahi Orchird  
 Sangram Indian Cuisine  
 Olive's Greek & Middle  
 Eastern Cafe  
 Una Mas!  
 Carl's Jr.  
 BB's Small World Cafe  
 Athena Grill

 CALTRAIN  
 LIGHT RAIL







## ERIK HALLGRIMSON

+1 408 615 3435

[erik.hallgrimson@cushwake.com](mailto:erik.hallgrimson@cushwake.com)

LIC #01274540

## CLARK STEELE

+1 408 436 3653

[clark.steele@cushwake.com](mailto:clark.steele@cushwake.com)

LIC #01995379

©2023 Cushman & Wakefield. All rights reserved. The information contained in this communication is strictly confidential. This information has been obtained from sources believed to be reliable but has not been verified. NO WARRANTY OR REPRESENTATION, EXPRESS OR IMPLIED, IS MADE AS TO THE CONDITION OF THE PROPERTY (OR PROPERTIES) REFERENCED HEREIN OR AS TO THE ACCURACY OR COMPLETENESS OF THE INFORMATION CONTAINED HEREIN, AND SAME IS SUBMITTED SUBJECT TO ERRORS, OMISSIONS, CHANGE OF PRICE, RENTAL OR OTHER CONDITIONS, WITHDRAWAL WITHOUT NOTICE, AND TO ANY SPECIAL LISTING CONDITIONS IMPOSED BY THE PROPERTY OWNER(S). ANY PROJECTIONS, OPINIONS OR ESTIMATES ARE SUBJECT TO UNCERTAINTY AND DO NOT SIGNIFY CURRENT OR FUTURE PROPERTY PERFORMANCE.

