

FOR SALE

135 N JACKSON AVE

Suite 202 | San Jose, CA



INTERO
A Berkshire Hathaway Affiliate



±1,537 SF MEDICAL OFFICE CONDO FOR SALE!

PROPERTY HIGHLIGHTS

- ±1,537 SF Medical Office Condo
- Strategically Located near Regional Medical Center
- Efficient Layout with 4 Exam Rooms, Office, Lab, 2 Restrooms
- Elevator Served
- Abundant Natural Light
- Strong Signage Opportunities
- Dedicated Doctor Parking
- Ample Patient Parking
- Excellent Access to I-680 and Highway 101 One Mile to VTA Light Rail @ McKee Station
- APN: #481-06-054
- Sale Price: \$598,000

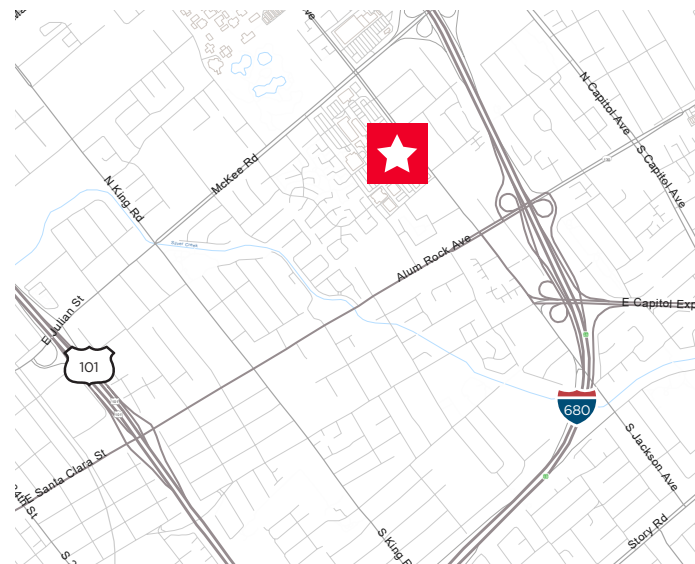
For more information, contact:

MIKI CORREA

Senior Director
+1 408 642 0826
miki.correa@cushwake.com
LIC #01718959

KRYSTLE THAI

Realtor
+1 626 616 3987
kthai@intero.com
LIC #02160130



300 Santana Row, Fifth Floor
San Jose, CA
Main +1 408 615 3400

cushmanwakefield.com

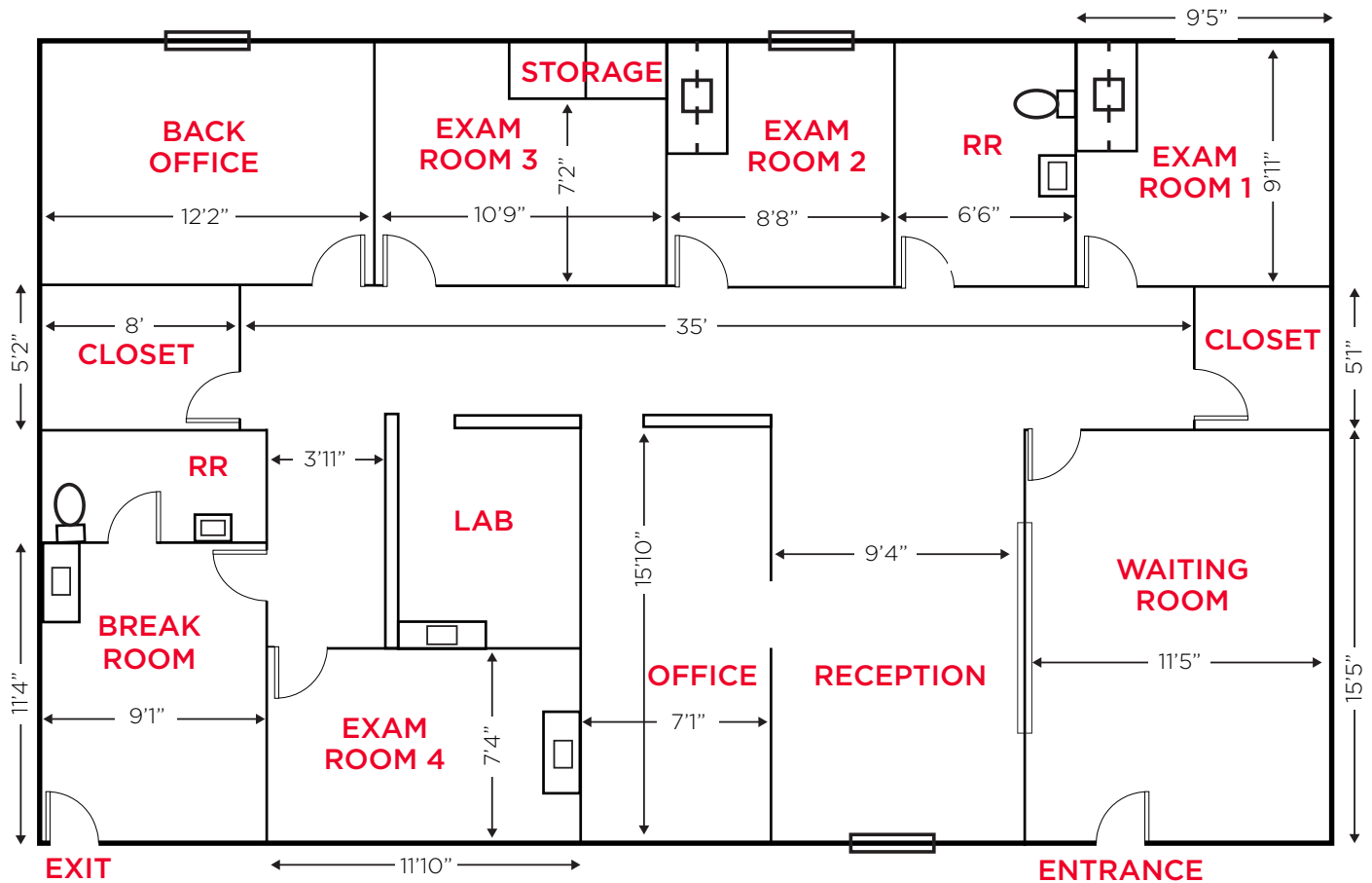
135 N JACKSON AVE

Suite 202 | San Jose, CA

±1,537 SF FOR SALE



FLOOR PLAN



MIKI CORREA
Senior Director
+1 408 642 0826
miki.correa@cushwake.com
LIC #01718959

KRYSTLE THAI
Realtor
+1 626 616 3987
kthai@intero.com
LIC #02160130

300 Santana Row, Fifth Floor
San Jose, CA 95128
Main +1 408 615 3400

cushmanwakefield.com



INTERO
A Berkshire Hathaway Affiliate

135 N JACKSON AVE

Suite 202 | San Jose, CA

±1,537 SF FOR SALE



PHOTOS



MIKI CORREA
Senior Director
+1 408 642 0826
miki.correa@cushwake.com
LIC #01718959

KRYSTLE THAI
Realtor
+1 626 616 3987
kthai@intero.com
LIC #02160130

300 Santana Row, Fifth Floor
San Jose, CA 95128
Main +1 408 615 3400

cushmanwakefield.com



INTERO
A Berkshire Hathaway Affiliate

135 N JACKSON AVE

Suite 202 | San Jose, CA

±1,537 SF FOR SALE



AERIAL/LOCATION MAP



MIKI CORREA
Senior Director
+1 408 642 0826
miki.correa@cushwake.com
LIC #01718959

KRYSTLE THAI
Realtor
+1 626 616 3987
kthai@intero.com
LIC #02160130

300 Santana Row, Fifth Floor
San Jose, CA 95128
Main +1 408 615 3400

cushmanwakefield.com

©2024 Cushman & Wakefield. All rights reserved. The information contained in this communication is strictly confidential. This information has been obtained from sources believed to be reliable but has not been verified. No warranty or representation, express or implied, is made as to the condition of the property (or properties) referenced herein or as to the accuracy or completeness of the information contained herein, and same is submitted subject to errors, omissions, change of price, rental or other conditions, withdrawal without notice, and to any special listing conditions imposed by the property owner(s). Any projections, opinions or estimates are subject to uncertainty and do not signify current or future property performance.