



FOR LEASE

# Plymouth City Center I

15650 36th Ave. N.  
Plymouth, MN



For more information, please contact:

**Ann Stahley**  
**Director**  
+1 651 248 6946  
ann.stahley@cushwake.com

**Cushman & Wakefield**  
3500 American Blvd. W | Suite 200  
Minneapolis, MN 55431  
cushmanwakefield.com

# Plymouth City Center I

15650 36th Ave. N., Plymouth, MN



## Property Highlights

- Contiguous space available
- Single-story building
- Ample parking
- Building signage available
- Card access
- Professionally managed
- Located in downtown Plymouth with convenient access to I-494
- Surrounded by restaurants, banks, hotels, daycare centers, post office and LifeTime Fitness

### BUILDING INFORMATION

BUILDING SIZE	22,632 sq. ft.
YEAR BUILT	2000
AVAILABLE SQ. FT.	5,044 SF
PARKING RATIO	4.76/1,000
LEASE RATE	Negotiable
2023 ESTIMATED TAX & OPER. EXP.	\$14.39



For more information, please contact:

**Ann Stahley**  
Director  
+1 651 248 6946  
ann.stahley@cushwake.com

**Cushman & Wakefield**  
3500 American Blvd. W | Suite 200  
Minneapolis, MN 55431  
cushmanwakefield.com

# Plymouth City Center I

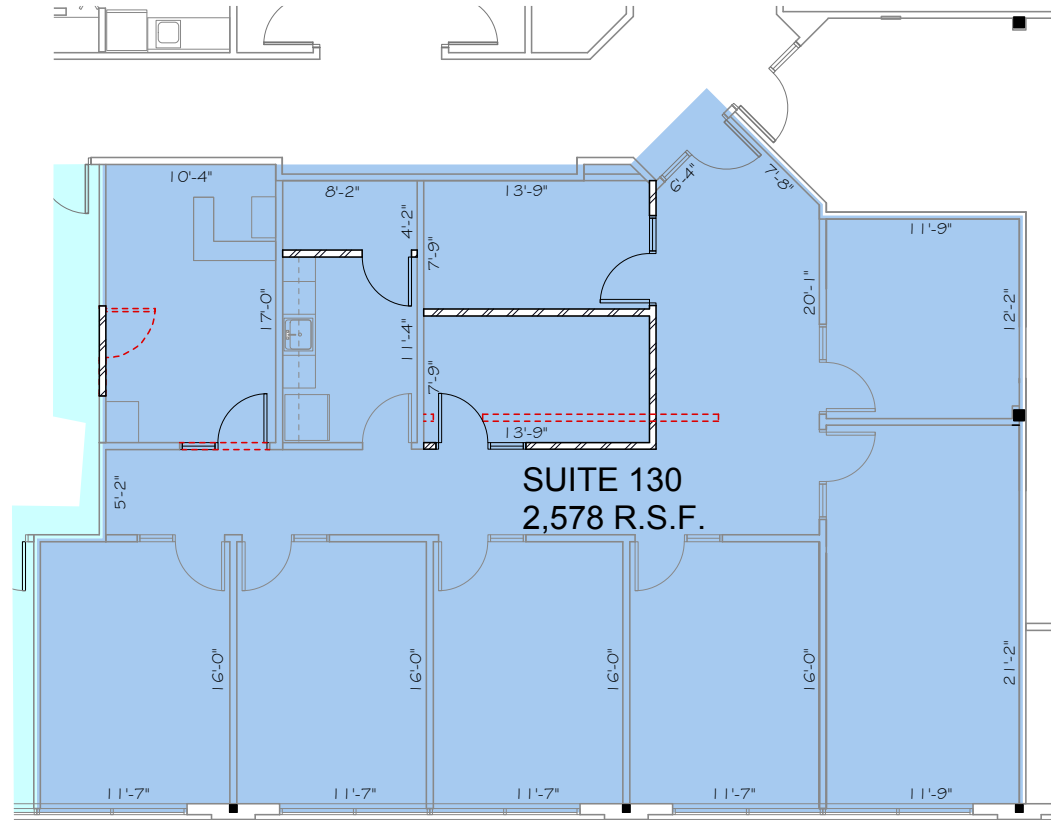
15650 36th Ave. N., Plymouth, MN



## Suite 130 2,578 SF



Key Plan



For more information, please contact:

**Ann Stahley**  
Director  
+1 651 248 6946  
ann.stahley@cushwake.com

**Cushman & Wakefield**  
3500 American Blvd. W | Suite 200  
Minneapolis, MN 55431  
cushmanwakefield.com



# Plymouth City Center I

15650 36th Ave. N., Plymouth, MN



For more information, please contact:

**Ann Stahley**  
Director  
+1 651 248 6946  
ann.stahley@cushwake.com

**Cushman & Wakefield**  
3500 American Blvd. W | Suite 200  
Minneapolis, MN 55431  
cushmanwakefield.com