

# TUSTIN EXECUTIVE CENTER

17542 E. 17TH STREET, TUSTIN, CA



# PROPERTY HIGHLIGHTS



A four (4) story, 90,932 square foot, Class A multi-tenant office building



Ideal Central Orange County Location



Flexible Suite Sizes Available



Excellent Glass Line



Located on the 17th Street Corridor with tons of walkable amenities



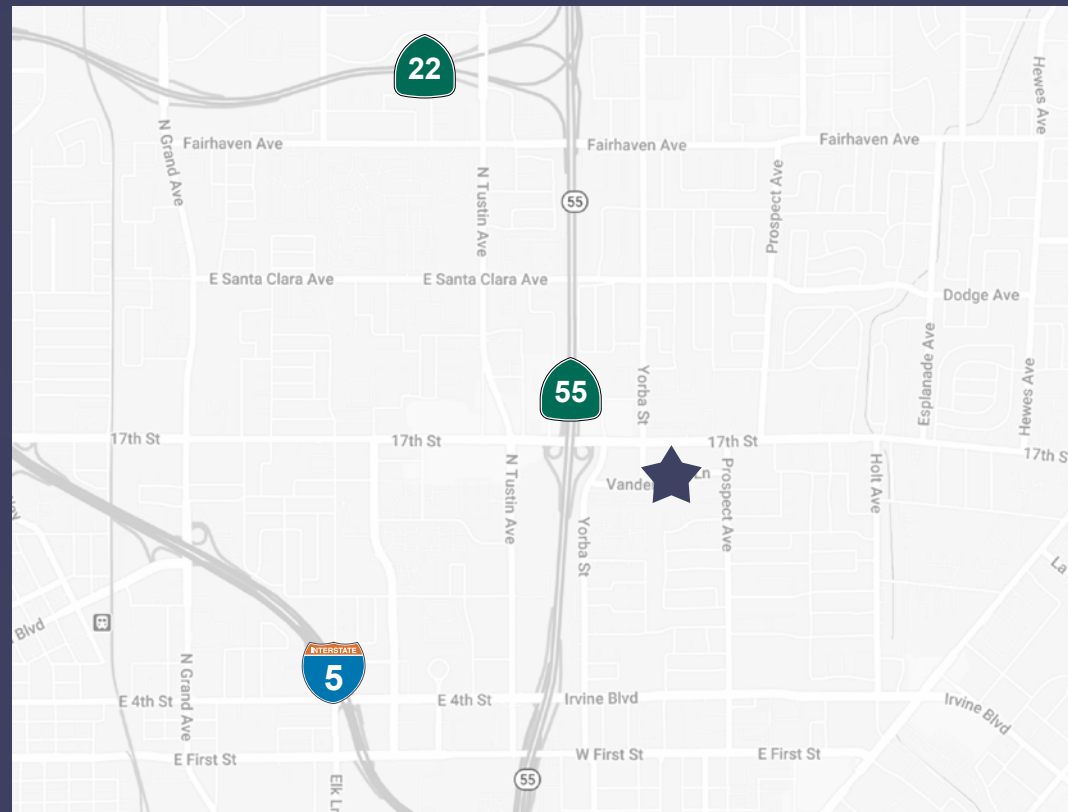
Structured and Surface Parking Available

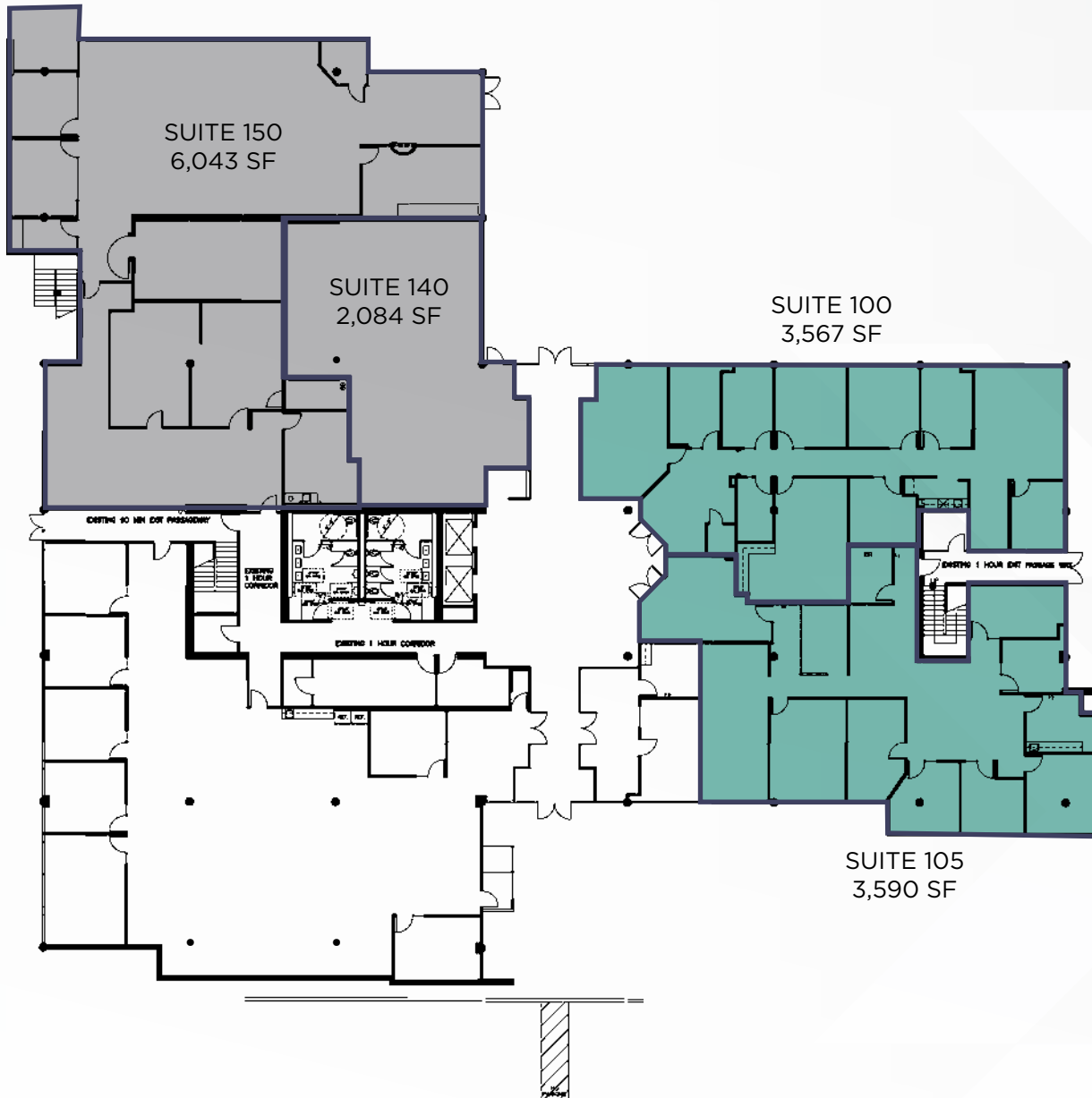


Professionally Managed with On-Site Engineer



Superb access to the 55, 5 and 22 Freeways





FLOOR 1		
SUITE	SF	STATUS
100	3,567 SF	11/1/19
105	3,590 SF	90 Days
100/105	7,157 SF (combined)	90 Days
140	2,084 SF	Vacant
150	6,043 SF	Vacant
140/150	8,127 SF (combined)	Vacant

**JASON PALDA**

Director  
 +1 949 533 9090  
 jason.palda@cushwake.com  
 Lic. 01820370

**CLINT GALLIVAN**

Associate  
 +1 949 955 7659  
 clint.gallivan@cushwake.com  
 Lic. 02078116

**JOHN GALLIVAN**

Executive Director, MCR, MCR.w  
 +1 949 955 7647  
 john.gallivan@cushwake.com  
 Lic. 01096309





## FLOOR 2

SUITE	SF	STATUS
250	9,287 SF	90 Days

### JASON PALDA

Director  
 +1 949 533 9090  
 jason.palda@cushwake.com  
 Lic. 01820370

### CLINT GALLIVAN

Associate  
 +1 949 955 7659  
 clint.gallivan@cushwake.com  
 Lic. 02078116

### JOHN GALLIVAN

Executive Director, MCR, MCR.w  
 +1 949 955 7647  
 john.gallivan@cushwake.com  
 Lic. 01096309



## FLOOR 3

SUITE	SF	STATUS
330	6,138 SF	Vacant



### JASON PALDA

Director  
+1 949 533 9090  
jason.palda@cushwake.com  
Lic. 01820370

### CLINT GALLIVAN

Associate  
+1 949 955 7659  
clint.gallivan@cushwake.com  
Lic. 02078116

### JOHN GALLIVAN

Executive Director, MCR, MCR.w  
+1 949 955 7647  
john.gallivan@cushwake.com  
Lic. 01096309





**TUSTIN EXECUTIVE CENTER**  
17542 E. 17TH STREET, TUSTIN, CA

**ENDERLE CENTER**

- Charleston Provence
- AA Jewel Box
- Chemers Gallery
- Decker's Fine Gifts & Collectibles
- Discoveries Contemporary Crafts
- H. Foster & Jackson
- Justin Porterfield, Ltd
- Winston's Estate Gallery
- Fitness Fixe
- Fusion Hair Salon
- Hair Industry: The Salon
- Rebecca Pelletier Interior Designer
- Dr. Cynthia Broady Optometry

- Dyers Hair Care
- Fancy Nails
- Kelton's Salon
- Studio J Pilates
- Belacan Grill
- Coffee Grinder
- Crab Cooker
- El Torito
- Zov's Bakery and Cafe
- 17th Street Bar and Grill
- Zov's Bistro
- A Perfect Fit - Fine Lingerie
- Frank's Menswear
- La Galleria

- Tina Marie's Brighton Collection
- Touch of Class Refinery
- Designer Kitchens, Inc.
- Once Upon a Storybook
- J. Ludwig Salon
- Mr. Jill's Body Firm
- Thomas Edward Salon

**TUSTIN'S FRENCH QUARTER**

- Dollar Tree
- Dream Dinners
- ET Beauty Supply & Nail Salon
- Exit Realty

- HMC Weight Loss
- Ideal Spine & Rehab
- Jesse Daniel Salon
- Joghurt Frozen Yogurt Haus
- Lamppost Pizza
- Little Gym of Tustin
- Marshalls
- One West Bank
- Royal Tustin Cleaners
- Sandy's Threading & Beauty
- Starbucks
- State Farm Insurance
- Subway Sandwiches
- MEA Hair & Makeup

- Mrs. Lee Crystal Visions
- New Smile Dental
- Relax Foot Spa
- Uplift
- Wyn Salon
- Chase ATM

**OAK TREE PLAZA**

- Ono Ono Hawaiian BBQ
- Oscar's Deli & Grill
- Postal Annex
- Uoko Japanese Cuisine
- US Cleaners

**JASON PALDA**  
Director  
+1 949 533 9090  
jason.palda@cushwake.com  
Lic. 01820370

**CLINT GALLIVAN**  
Associate  
+1 949 955 7659  
clint.gallivan@cushwake.com  
Lic. 02078116

**JOHN GALLIVAN**  
Executive Director, MCR, MCR.w  
+1 949 955 7647  
john.gallivan@cushwake.com  
Lic. 01096309



# TUSTIN EXECUTIVE CENTER

17542 E. 17TH STREET, TUSTIN, CA

For more information, please contact

---

## **JASON PALDA**

Director  
+1 949 533 9090  
jason.palda@cushwake.com  
Lic. 01820370

## **CLINT GALLIVAN**

Associate  
+1 949 955 7659  
clint.gallivan@cushwake.com  
Lic. 02078116

## **JOHN GALLIVAN**

Executive Director, MCR, MCR.w  
+1 949 955 7647  
john.gallivan@cushwake.com  
Lic. 01096309



©2019 Cushman & Wakefield. All rights reserved. The information contained in this communication is strictly confidential. This information has been obtained from sources believed to be reliable but has not been verified. NO WARRANTY OR REPRESENTATION, EXPRESS OR IMPLIED, IS MADE AS TO THE CONDITION OF THE PROPERTY (OR PROPERTIES) REFERENCED HEREIN OR AS TO THE ACCURACY OR COMPLETENESS OF THE INFORMATION CONTAINED HEREIN, AND SAME IS SUBMITTED SUBJECT TO ERRORS, OMISSIONS, CHANGE OF PRICE, RENTAL OR OTHER CONDITIONS, WITHDRAWAL WITHOUT NOTICE, AND TO ANY SPECIAL LISTING CONDITIONS IMPOSED BY THE PROPERTY OWNER(S). ANY PROJECTIONS, OPINIONS OR ESTIMATES ARE SUBJECT TO UNCERTAINTY AND DO NOT SIGNIFY CURRENT OR FUTURE PROPERTY PERFORMANCE.