

**FOR LEASE**

# PALOMAR TERRACE

3115 MELROSE DRIVE, CARLSBAD, CA 92010



**ARIC STARCK** // +1 760 431 4211 // [aric.starck@cushwake.com](mailto:aric.starck@cushwake.com) // LIC# 01325461  
**MATTY SUNDBERG** // +1 760 438 8518 // [matty.sundberg@cbre.com](mailto:matty.sundberg@cbre.com) // LIC #01257446



## FOR LEASE

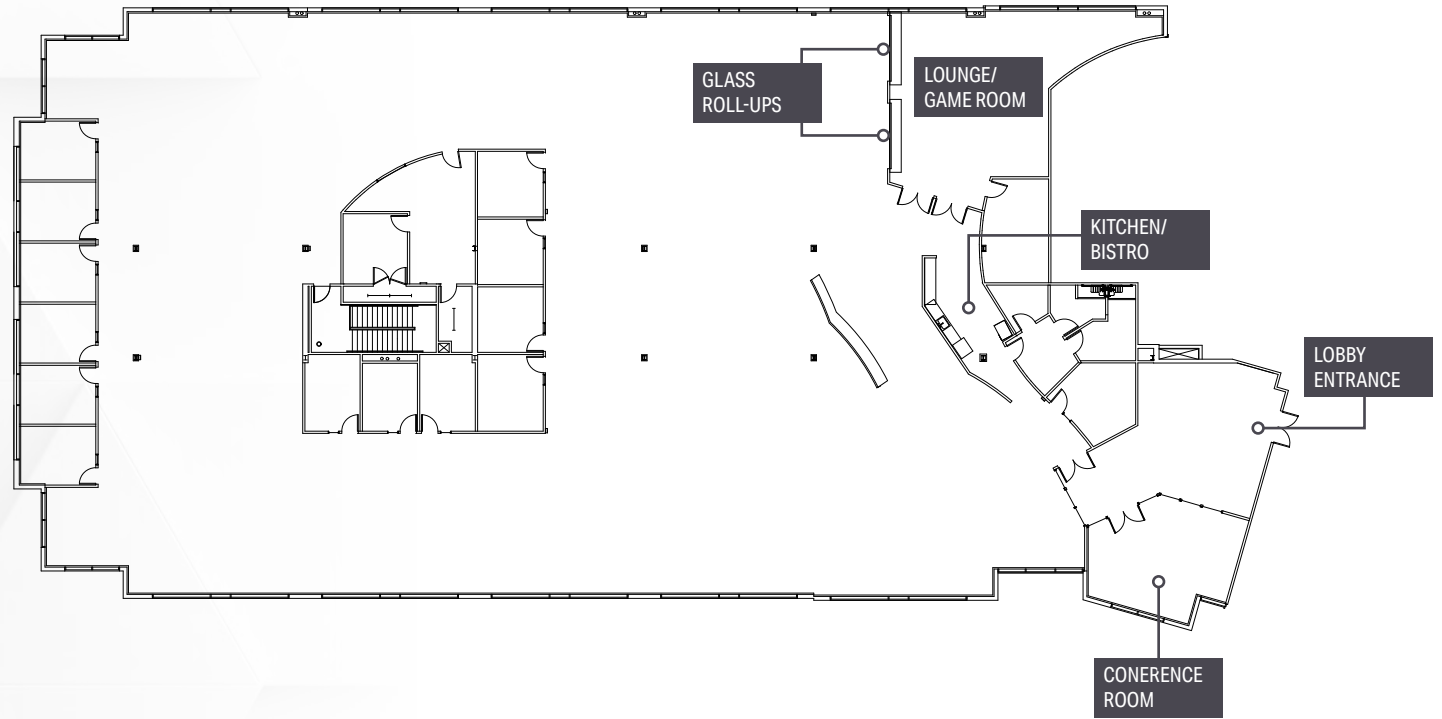
### Features

- > North San Diego's premier corporate headquarters location
- > Building upgrades just completed
- > High image lobby with vaulted open air ceilings
- > Nearby nature trail, park and picnic area
- > Highly efficient floor plate
- > Signalized intersection at entry for easy employee access
- > Above standard parking at 4.3/1,000 SF

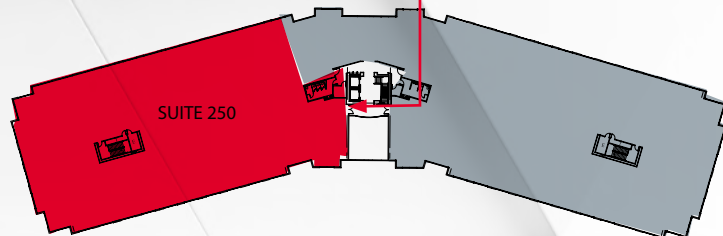


# SUITE 250

24,091 RSF



## SECOND FLOOR



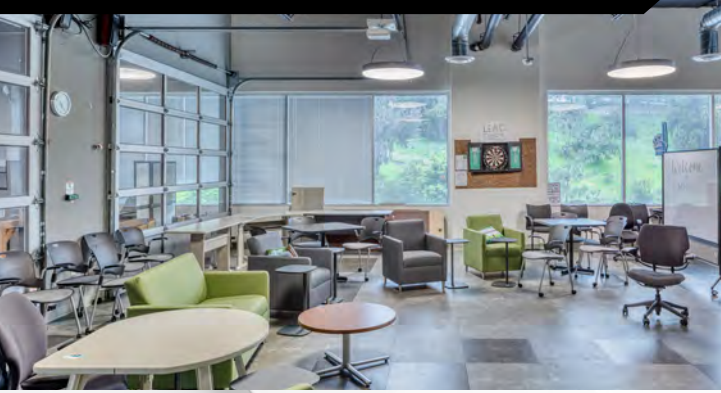
SUITE LOBBY ENTRANCE  
DIRECTLY OFF ELEVATOR  
AND LOBBY STAIRCASE

- FOR LEASE
- LEASED

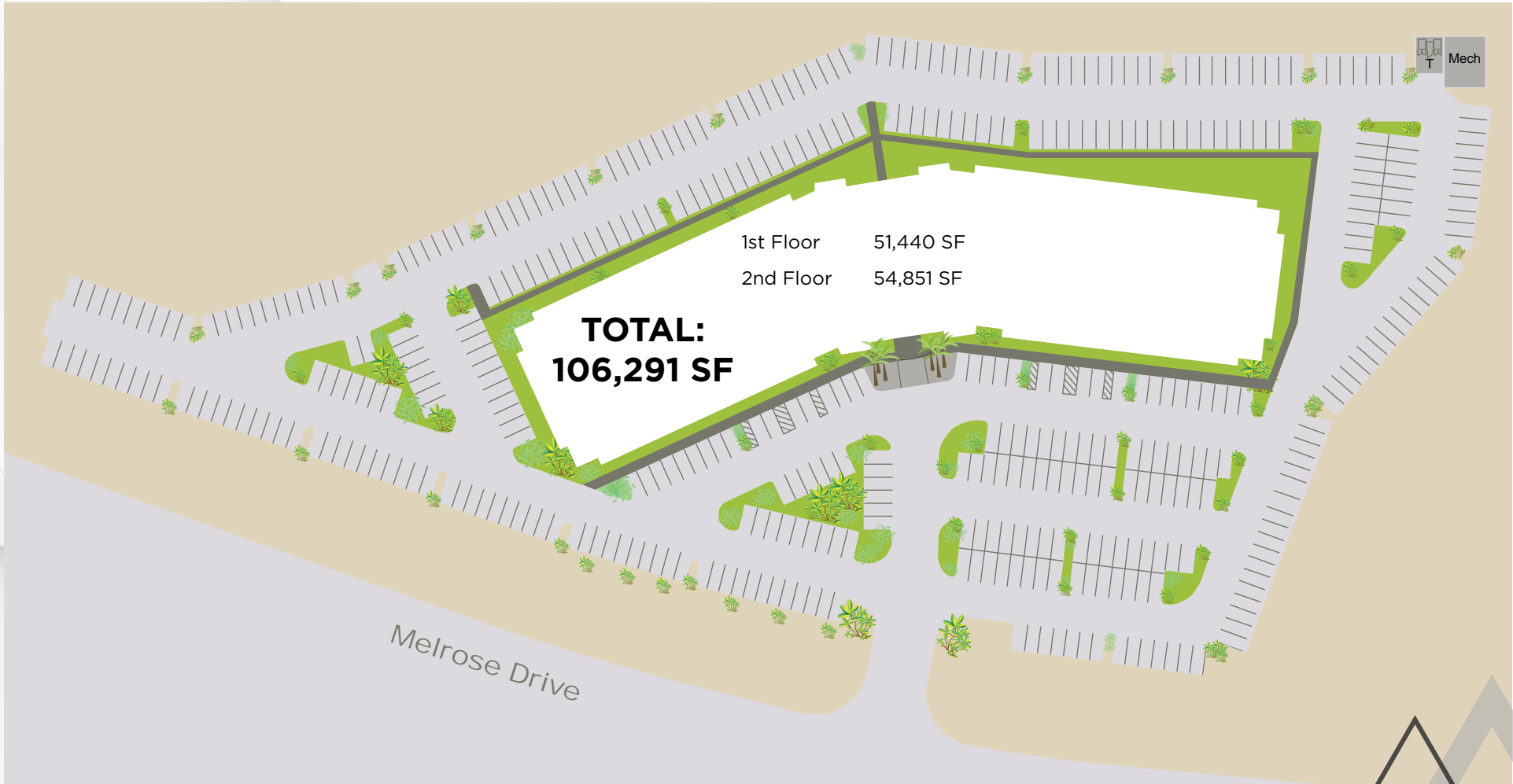
# SUITE 250



PALOMAR  
TERRACE



# SITE PLAN



# AMENITIES // 200,000 SF OF RETAIL

**FOR LEASE**

# PALOMAR TERRACE

3115 MELROSE DRIVE, CARLSBAD, CA 92010

**ARIC STARCK**

Executive Vice Chairman

+1 760 431 4211

[aric.starck@cushwake.com](mailto:aric.starck@cushwake.com)

LIC# 01325461

**MATTY SUNDBERG**

Senior Vice President

+1 760 438 8518

[matty.sundberg@cbre.com](mailto:matty.sundberg@cbre.com)

LIC #01257446

