



OFFICE | MEDICAL SPACE FOR SUBLEASE

214 Wall Street

Huntington, NY

Office | Medical Space For Sublease



Lower Level 3,000 SF | Third Floor ± 6,067 SF

For more information, please contact:

Melissa Naeder
+ 1 631.425.1222
Melissa.Naeder@cushwake.com

John A. LaRuffa, SIOR
+1 631. 270.3010
John.LaRuffa@cushwake.com

Office | Medical Space For Sublease

Building Size: ± 19,000 SF

Available Space: Lower Level: ± 3,000 SF
Third Floor: ± 6,067 SF

Lot Size: ± 1.04 Acres

Parking: 100 Spots

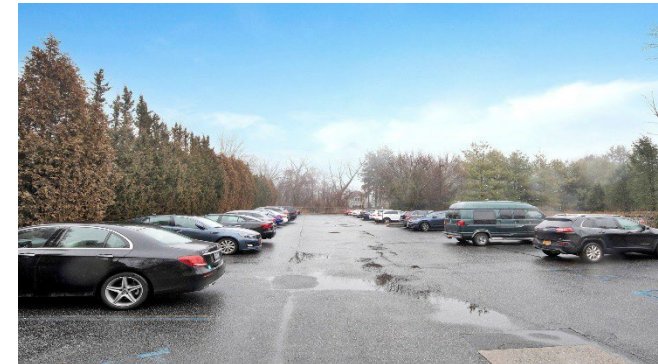
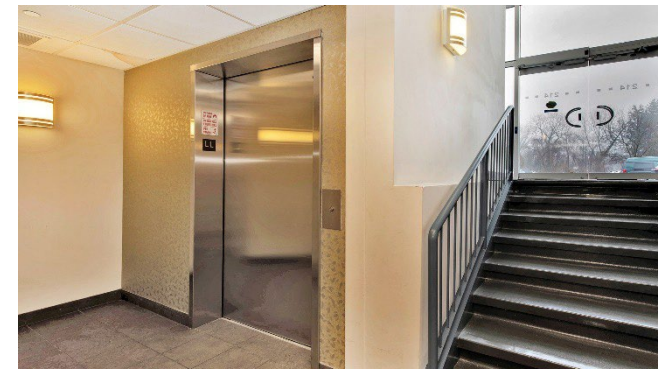
Possession: Arranged

Sublease Term: 9/30/2028

Sublease Price: Upon request

PROPERTY HIGHLIGHTS

- Full Build-Out
- Built in 2006
- Space is in excellent condition
- Conveniently located in Downtown Huntington Village



For more information, Please Contact:

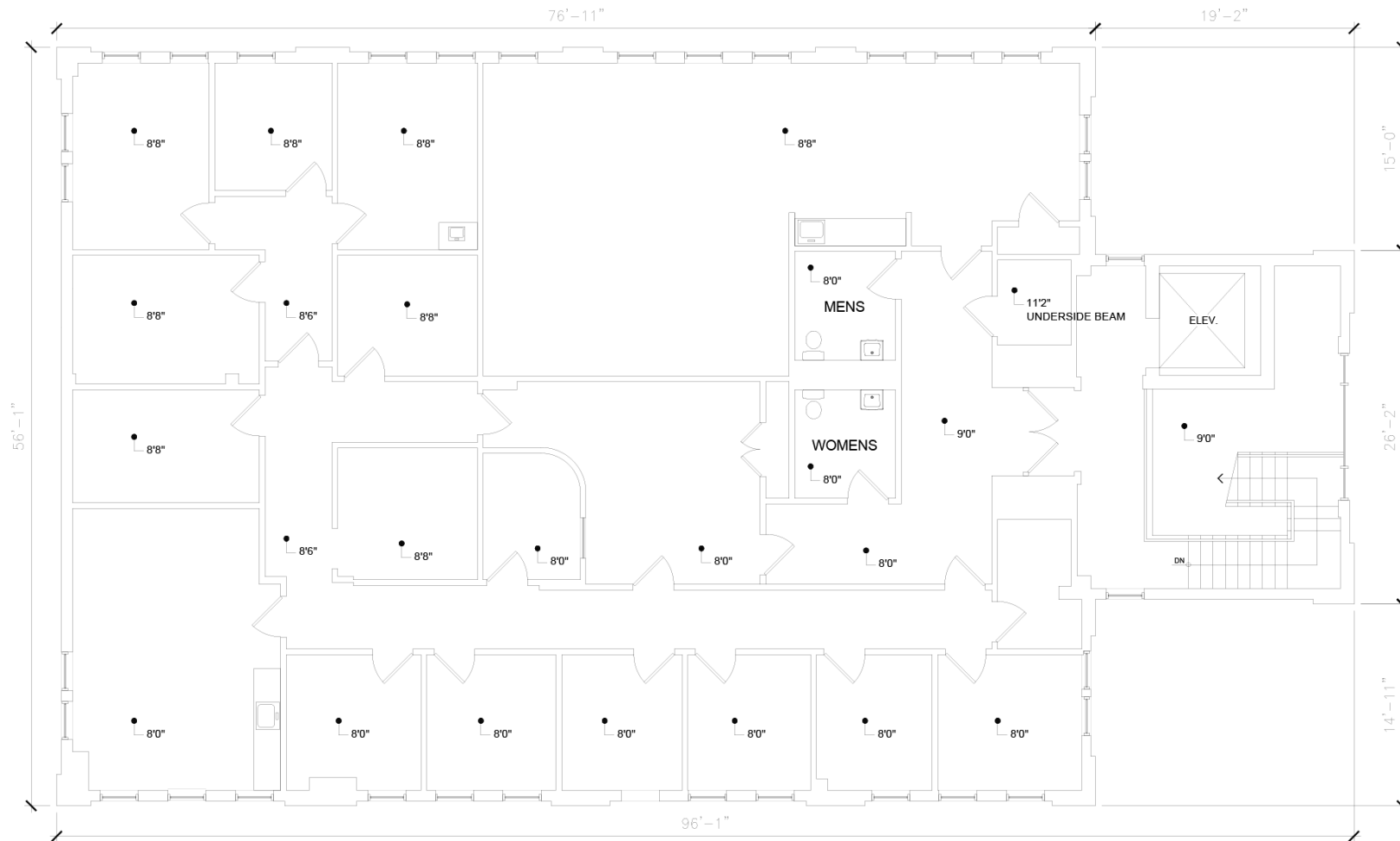
Melissa Naeder
+ 1 631.425.1222
Melissa.Naeder@cushwake.com

John A. LaRuffa, SIOR
+1 631. 270.3010
John.LaRuffa@cushwake.com

FLOOR PLAN

Third Floor

± 6,067 SF



For more information, Please Contact:

Melissa Naeder
+ 1 631.425.1222
Melissa.Naeder@cushwake.com

John A. LaRuffa, SIOR
+1 631. 270.3010
John.LaRuffa@cushwake.com

Office | Medical Space For Sublease



For more information, please contact:

Melissa Naeder
+ 1 631.425.1222
Melissa.Naeder@cushwake.com

John A. LaRuffa, SIOR
+1 631. 270.3010
John.LaRuffa@cushwake.com

175 Broadhollow Road, Suite 235
Melville, NY 11747
Main +1 631 425 1200
Fax +1 631 425 1201
cushmanwakefield.com