



OFFICE | MEDICAL SPACE FOR SUBLEASE

214 Wall Street

Huntington, NY

Office | Medical Space For Sublease



Lower Level 5,047 SF | Third Floor ± 6,067 SF

For more information, please contact:

Melissa Naeder
+ 1 631.425.1222
Melissa.Naeder@cushwake.com

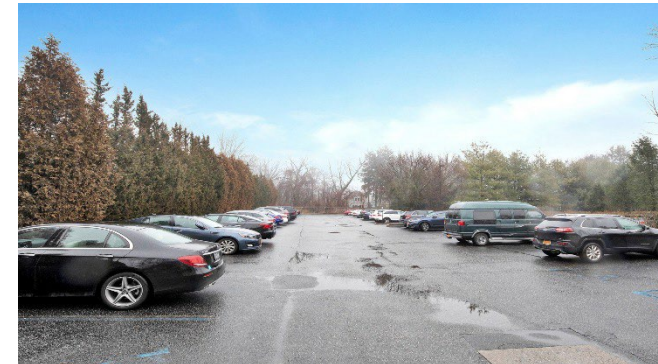
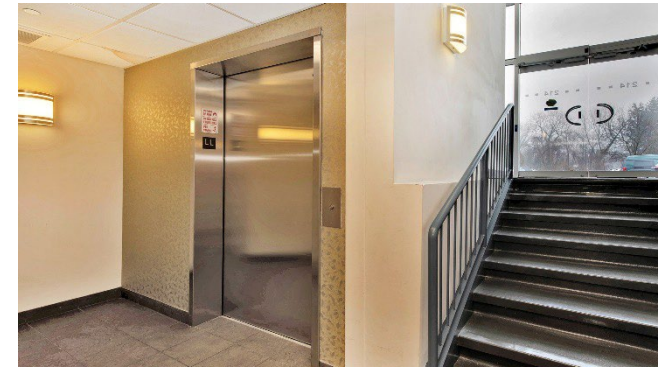
John A. LaRuffa, SIOR
+1 631. 270.3010
John.LaRuffa@cushwake.com

Office | Medical Space For Sublease

Building Size:	± 19,000 SF
Available Space:	Lower Level: ± 5,047 SF Third Floor: ± 6,067 SF
Lot Size:	± 1.04 Acres
Parking:	100 Spots
Possession:	Arranged
Sublease Term:	9/30/2028
Sublease Price:	Upon request

PROPERTY HIGHLIGHTS

- Full Build-Out
- Built in 2006
- Space is in excellent condition
- Conveniently located in Downtown Huntington Village



For more information, Please Contact:

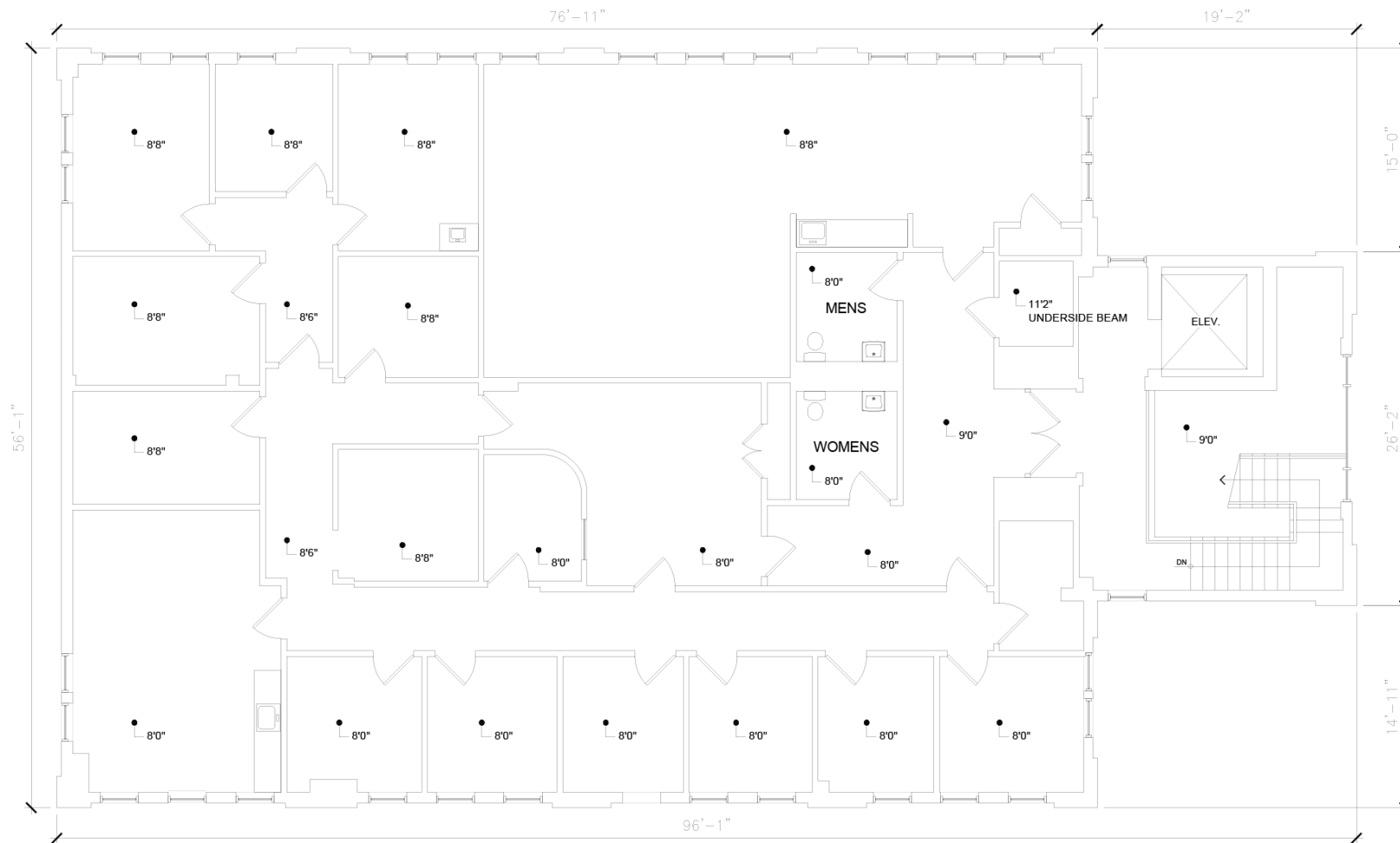
Melissa Naeder
+ 1 631.425.1222
Melissa.Naeder@cushwake.com

John A. LaRuffa, SIOR
+1 631. 270.3010
John.LaRuffa@cushwake.com

FLOOR PLAN

Third Floor

± 6,067 SF



For more information, Please Contact:

Melissa Naeder
+ 1 631.425.1222
Melissa.Naeder@cushwake.com

John A. LaRuffa, SIOR
+1 631. 270.3010
John.LaRuffa@cushwake.com

Office | Medical Space For Sublease



For more information, please contact:

Melissa Naeder
+ 1 631.425.1222
Melissa.Naeder@cushwake.com

John A. LaRuffa, SIOR
+1 631. 270.3010
John.LaRuffa@cushwake.com

175 Broadhollow Road, Suite 235
Melville, NY 11747
Main +1 631 425 1200
Fax +1 631 425 1201
cushmanwakefield.com