



5650 CENTERPOINT CT

Gurnee, IL

213,141 SF
AVAILABLE FOR
LEASE

**UNDER NEW
OWNERSHIP**



**I-94 Tollway Visibility
98,000 Cars per Day!**

HOME

HIGHLIGHTS

AVAILABLE

AERIAL

LOCATION

For more information, please contact:

Keith Puritz
Executive Managing Director
+1 847 720 1366
keith.puritz@cushwake.com

Brett Kroner
Executive Managing Director
+1 847 720 1367
brett.kroner@cushwake.com

Marc Samuels
Director
+1 847 720 1368
marc.samuels@cushwake.com



PROPERTY SPECS

Total Building	213,141 SF
Office Area	9,809 SF
Clear Height	32'
Year Built	2005
Parking	65 cars (Expandable to 200) 4 trailer
Power	3000 Amps / 480 Volts
Sprinkler	ESFR
Lighting	T-5
Loading	12 Exterior Docks (Expandable to 28) 4 Drive-In Doors (Drive Thru Capability)
Floor Thickness	4 bays @ 8" reinforced 1 bay @ 10" reinforced
Lease Rate	\$5.75/SF Net
RE Taxes	\$0.85/SF (2020 payable 2021)



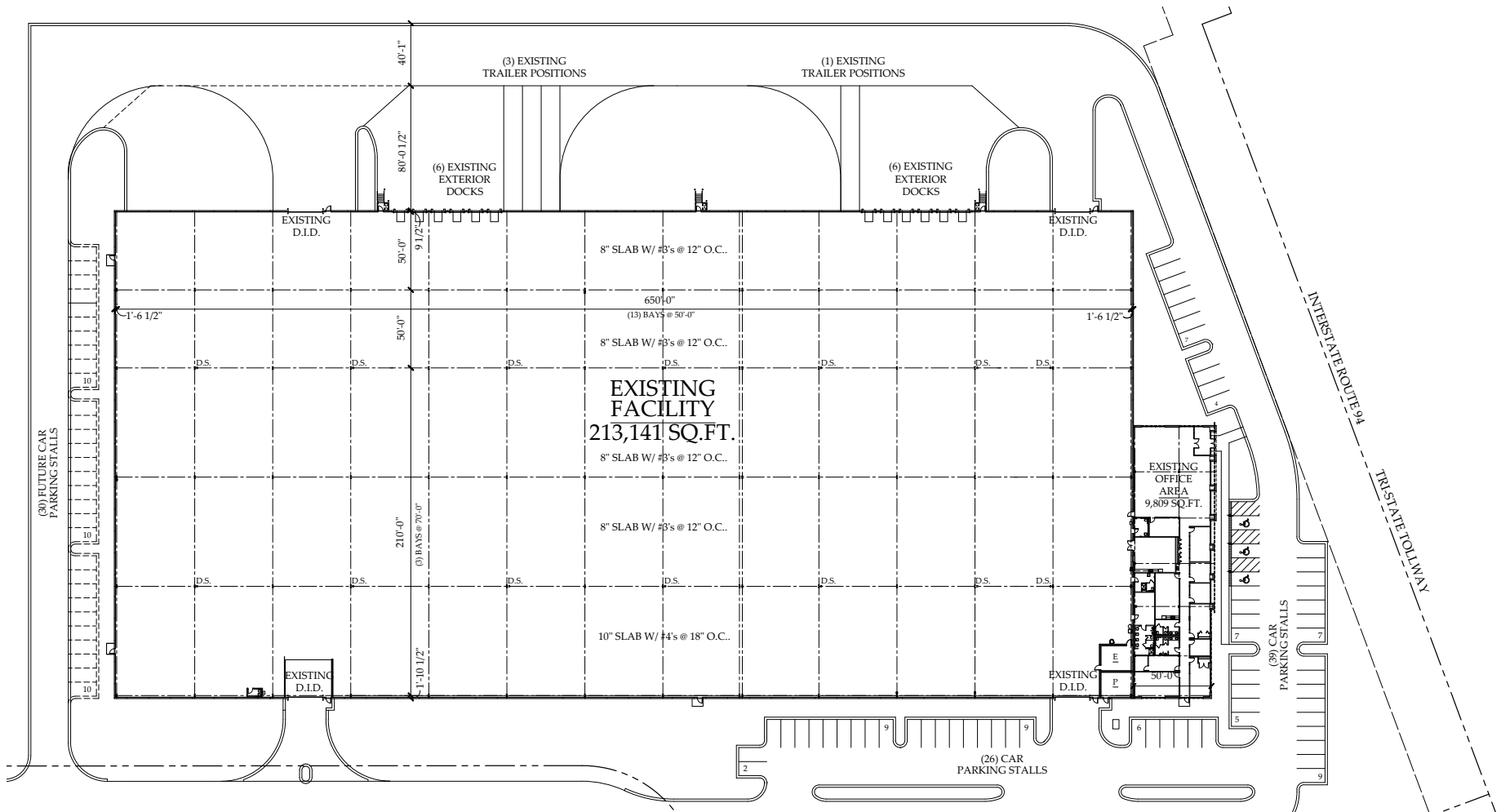
For more information, please contact:

Keith Puritz
Executive Managing Director
+1 847 720 1366
keith.puritz@cushwake.com

Brett Kroner
Executive Managing Director
+1 847 720 1367
brett.kroner@cushwake.com

Marc Samuels
Director
+1 847 720 1368
marc.samuels@cushwake.com

213,141 SF FOR LEASE



For more information, please contact:

Keith Puritz
Executive Managing Director
+1 847 720 1366
keith.puritz@cushwake.com

Brett Kroner
Executive Managing Director
+1 847 720 1367
brett.kroner@cushwake.com

Marc Samuels
Director
+1 847 720 1368
marc.samuels@cushwake.com

Aerial View



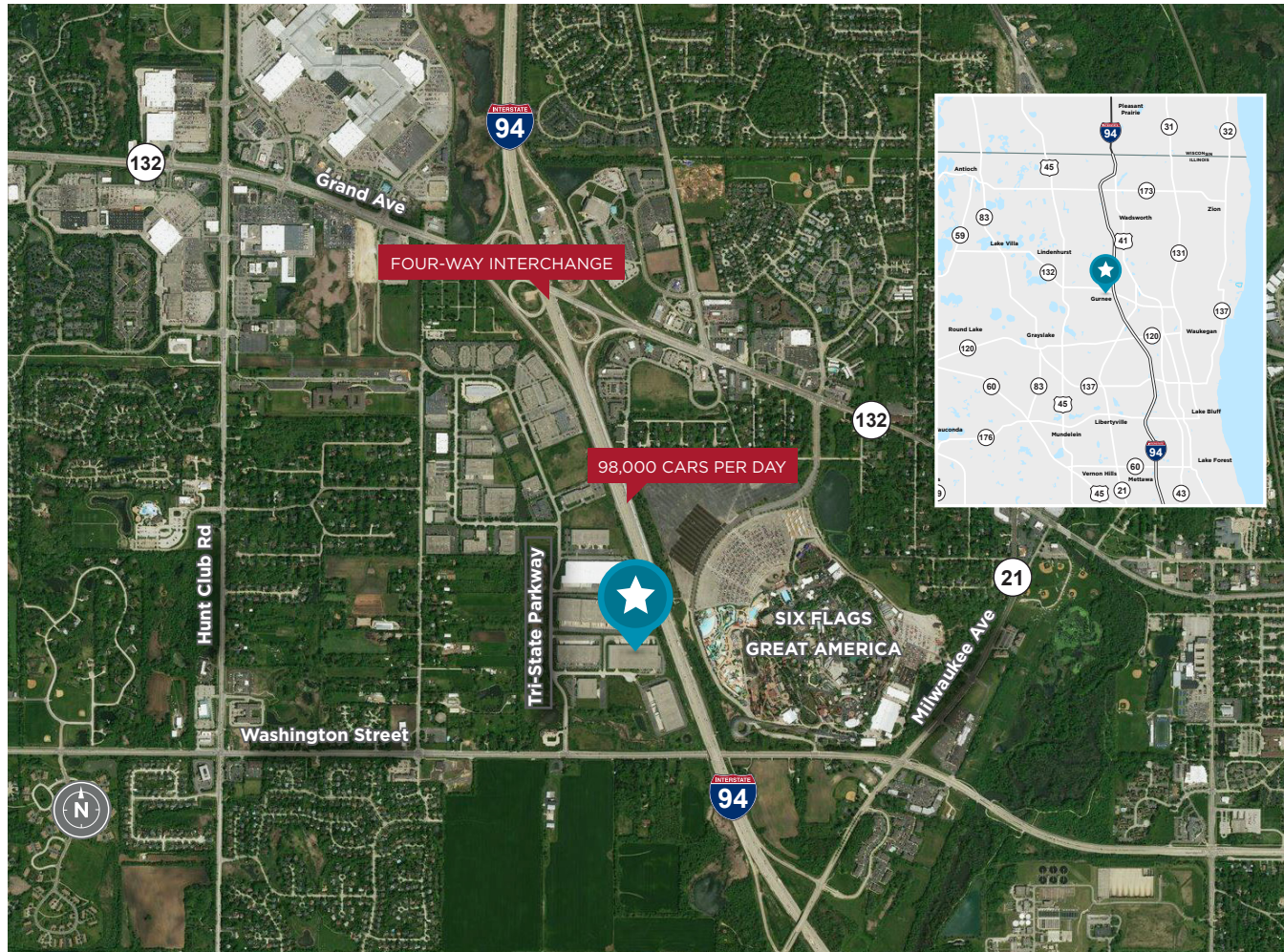
For more information, please contact:

Keith Puritz
Executive Managing Director
+1 847 720 1366
keith.puritz@cushwake.com

Brett Kroner
Executive Managing Director
+1 847 720 1367
brett.kroner@cushwake.com

Marc Samuels
Director
+1 847 720 1368
marc.samuels@cushwake.com

Location Highlights



For more information, please contact:

Keith Puritz
Executive Managing Director
+1 847 720 1366
keith.puritz@cushwake.com

Brett Kroner
Executive Managing Director
+1 847 720 1367
brett.kroner@cushwake.com

Marc Samuels
Director
+1 847 720 1368
marc.samuels@cushwake.com