

CAJON DISTRIBUTION CENTER

6207 Cajon Boulevard
San Bernardino, CA

+830,750 SF Available



6207 Cajon Boulevard, San Bernardino, CA

830,750 SF Industrial for Lease



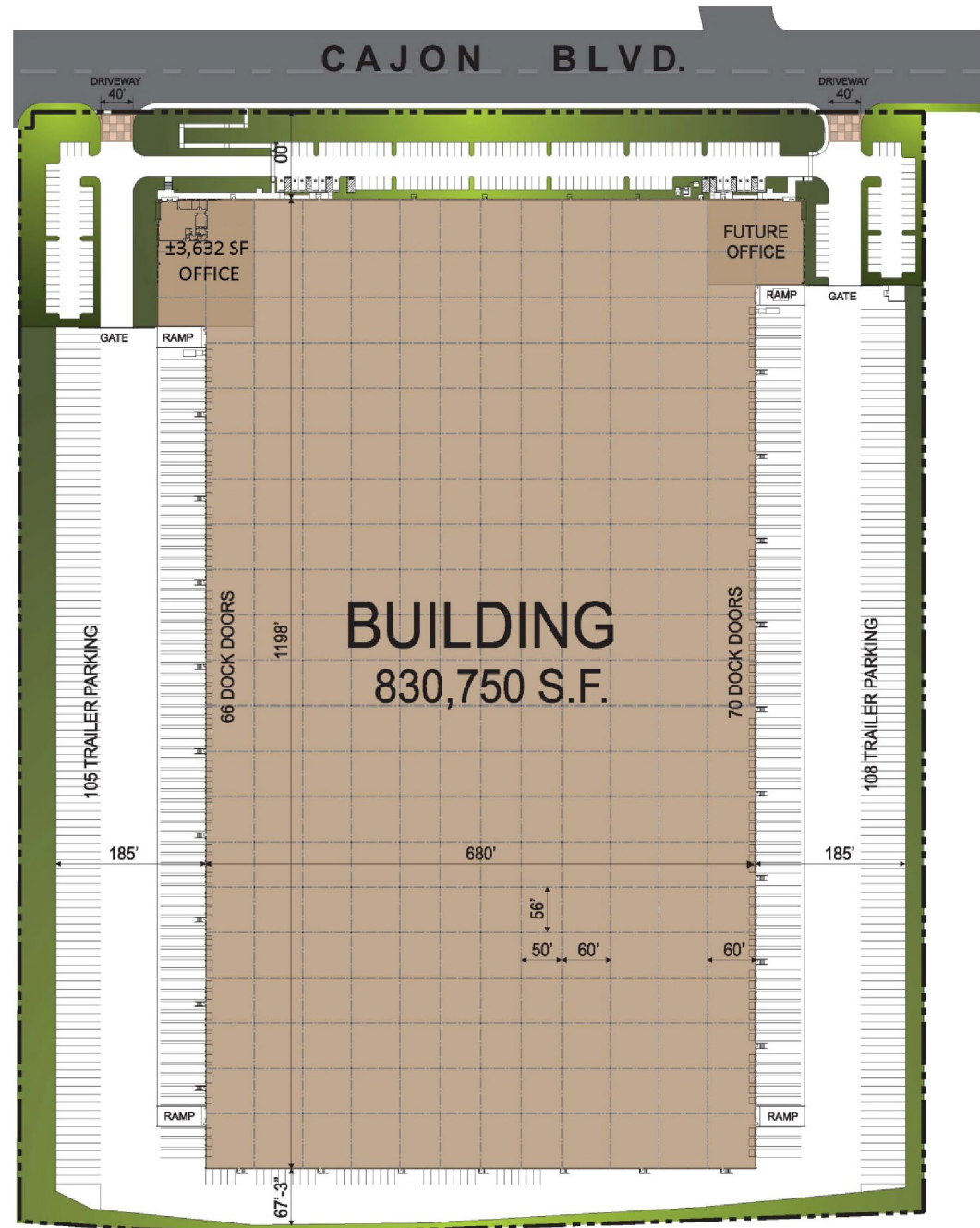
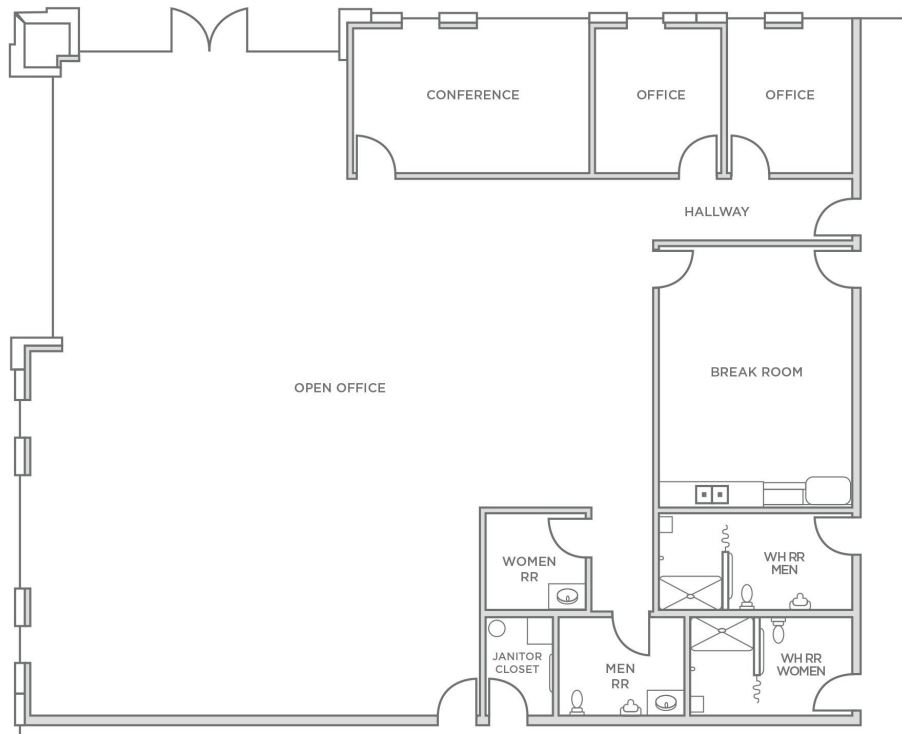
Property Features

| | |
|----------------------|------------------------|
| Total Building Size: | 830,750 SF |
| Building Dimensions: | 1,198' x 680' |
| Land Area: | 35.2 acres |
| Office Area: | 3,632 SF |
| Loading: | Cross Dock |
| Clear Height: | 36' Minimum |
| Loading: | Cross Dock |
| Dock High Doors: | 136 (48 Dock Packages) |
| Ground Level Doors: | 4 |
| Car Parking: | 232 |
| Trailer Parking: | 213 |
| Truck Court: | 185' |
| Power: | 4,000 amp, 480/277v |
| Sprinklers: | ESFR |
| Column Spacing: | 56' (W) Typical |

6207 Cajon Boulevard, San Bernardino, CA

Building Plans

3,632 SF Office Area



Major street frontage/visibility

Location



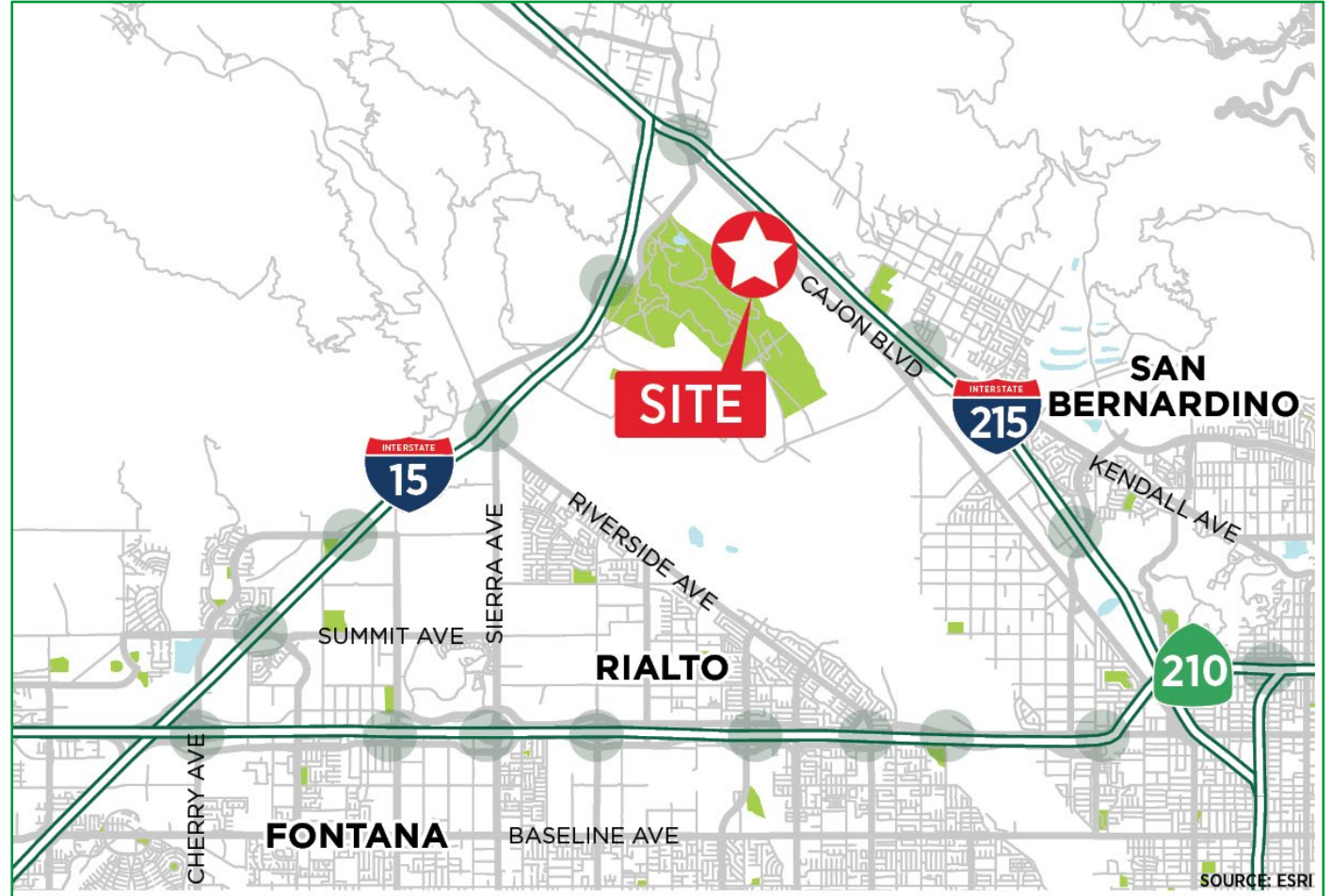
Nearby Interstates

- I-215 Freeway 2.0 mi
- I-15 Freeway 3.0 mi
- I-210 Freeway 5.0 mi



Transportation hubs

- BNSF Intermodal Yard 8.1 mi
- Ontario Int'l Airport 18.7 mi
- UPS Hub 19.9 mi
- Fedex Hub 20.4 mi
- Los Angeles Int'l Airport 74.2 mi
- Ports of LA/Long Beach 76.3 mi





CORPORATE OCCUPIERS

North San Bernardino / Rialto Submarkets



6207 Cajon Blvd
San Bernardino, CA

- FedEx
- hp
- TESLA
- BOB'S DISCOUNT FURNITURE
- JCPenney
- amazon

- MARS
- MCLANE
- DOLLAR TREE
- MICHELIN

HAUTELOOK



FONTANA

SAN BERNARDINO

RIALTO

Cherry Ave

Beech Ave

Baseline Ave

Sierra Ave

Alder Ave

Riverside Ave

State St

U of Mt. Vernon Ave

Summit Ave

Highland Ave

Baseline Ave

15

15

210

210

210

210

215

Cajon Blvd

Historic Route 66

About us

GLP overview

GLP is a leading global business builder, investor, developer and operator of logistics real estate. We own and operate assets and businesses in 17 countries across Asia, Europe and the Americas. GLP Capital Partners is the exclusive fund manager and investment advisor of GLP, with approximately \$115 billion in assets under management.

Disclaimer

Cushman & Wakefield makes no warranty or representation, express or implied, as to the accuracy or completeness of the information contained herein, and same is submitted subject to errors, omissions, change of price, rental or other conditions, withdrawal without notice, and to any special listing conditions imposed by the property owner. As applicable, we make no representation to the condition of the property in question.

Leasing contacts

Chuck Belden, SIOR
+1 909 942 4640
chuck.belden@cushwake.com
CA License #00844840

Phil Lombardo
+1 909 942 4678
phil.Lombardo@cushwake.com
CA License #00892477

Tim Pimentel, SIOR
+1 909 942 4647
tim.pimentel@cushwake.com
CA License #01421452

Andrew Starnes
+1 909 942 4667
andrew.starnes@cushwake.com
CA License #01799801

GLP contacts

Nick Niemann
+1 310 695 2880
nniemann@glp.com