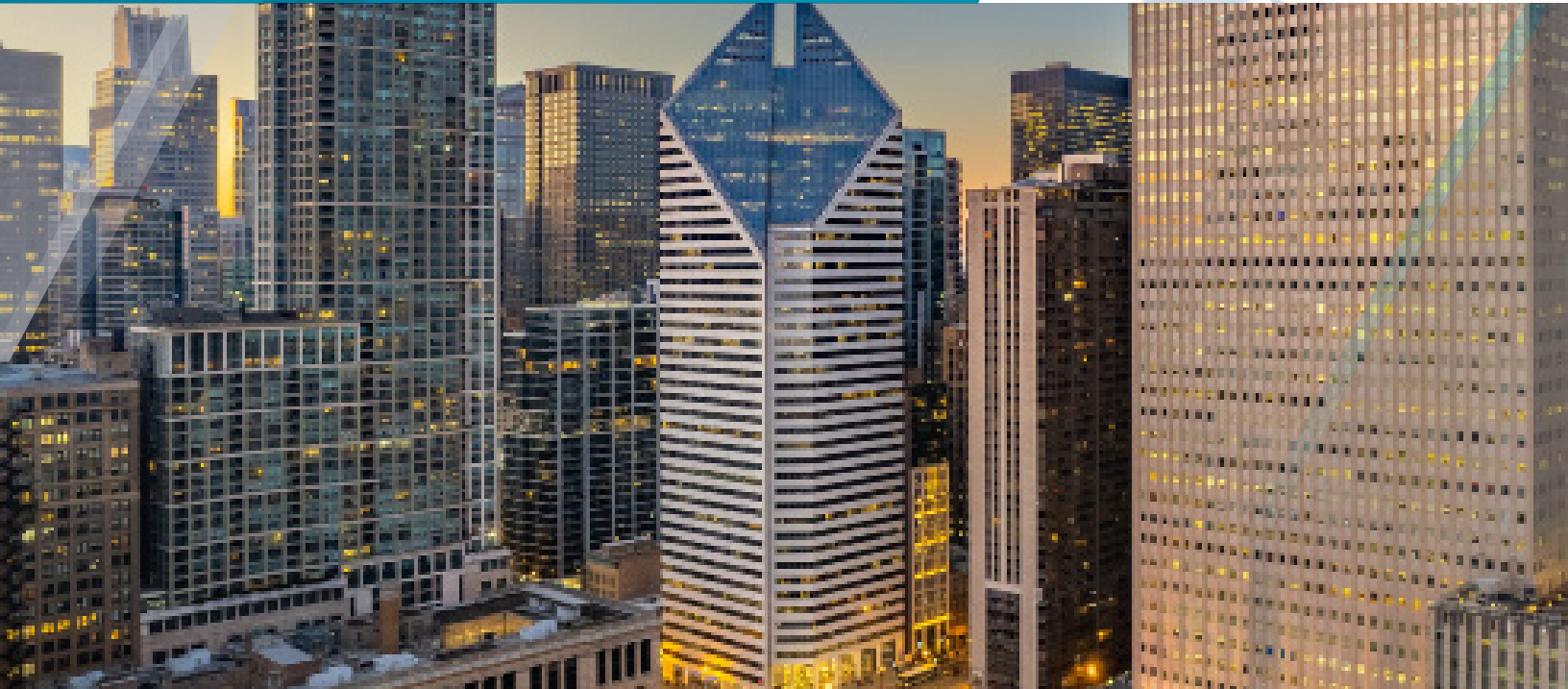


FOR SUBLEASE

150 North Michigan Avenue
5th Floor | Chicago, Illinois



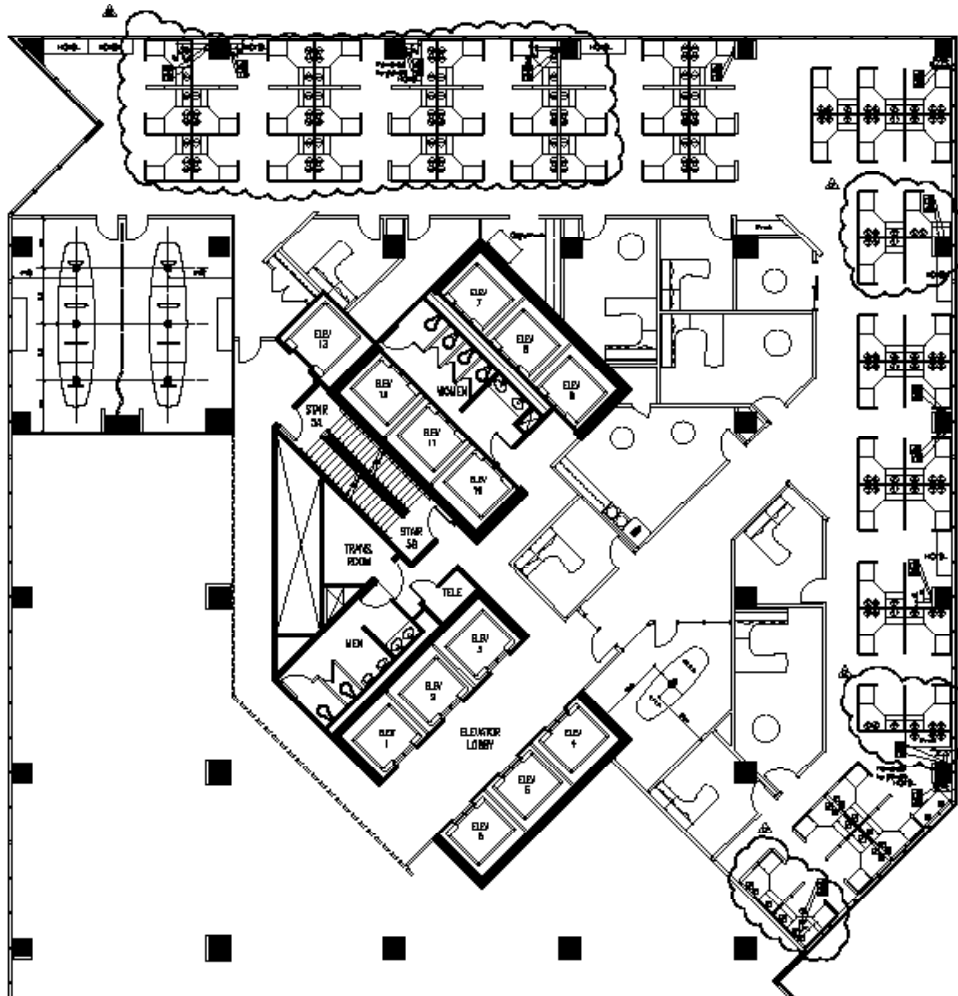
10,382 RSF ON 5TH FLOOR

- Sublease Expires: 7/31/2025
- Southeast Facing Views of Millennium Park (Michigan Ave. & Randolph St.)
- Elevator ID
- Fully Furnished
- 62 Workstations
- 8 Perimeter Private Offices
- 1 Medium Sized Conference Room
- 2 Large 20-Person Board Rooms (Can Combine for 40+ Heads)
- Kitchen & Break Room
- Reception/Lobby
- Building Amenities: [Dollop Coffee](#) & Sweetgreen on Ground Floor, New Fitness Center and Tenant Lounge with Ample Conferencing

Contact

JACK TUNNICLIFF
+1 312 871 5024
jack.tunncliff@cushwake.com

5th Floor | 10,382 RSF Total

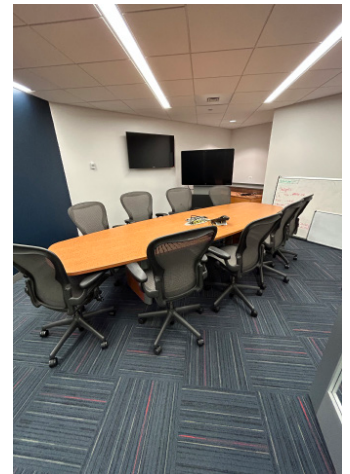


Contact

JACK TUNNICLIFF
+1 312 871 5024
jack.tunncliff@cushwake.com

FOR SUBLEASE

150 North Michigan Avenue, 5th Floor | Chicago, IL



Contact

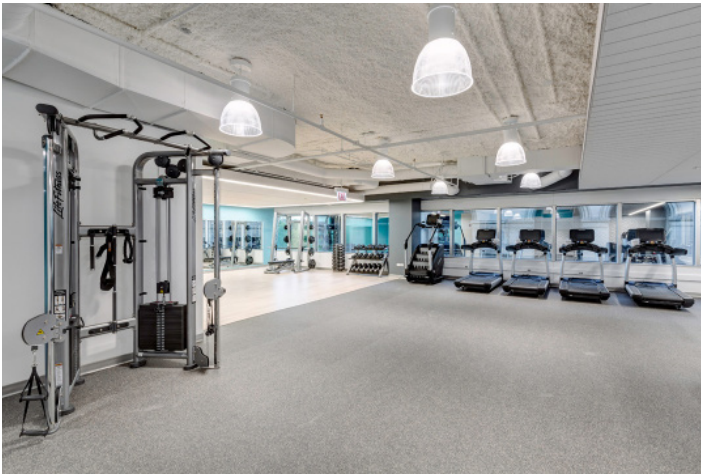
JACK TUNNICLIFF
+1 312 871 5024
jack.tunncliff@cushwake.com

FOR SUBLEASE

150 North Michigan Avenue, 5th Floor | Chicago, IL



Building Amenities



Contact

JACK TUNNICLIFF
+1 312 871 5024
jack.tunncliff@cushwake.com