

*For Sublease: ±4,790 RSF*

**2010** CROW CANYON  
SUITE 410



**JOHN FENNELL**  
Managing Director  
925 274 2802  
John.Fennell@cushwake.com  
LIC #00902673





# PROPERTY HIGHLIGHTS

**2010** CROW CANYON SUITE 410

**Premises:** 2010 Crow Canyon Place, Suite 410, San Ramon CA

**Size:** ±4,790 RSF

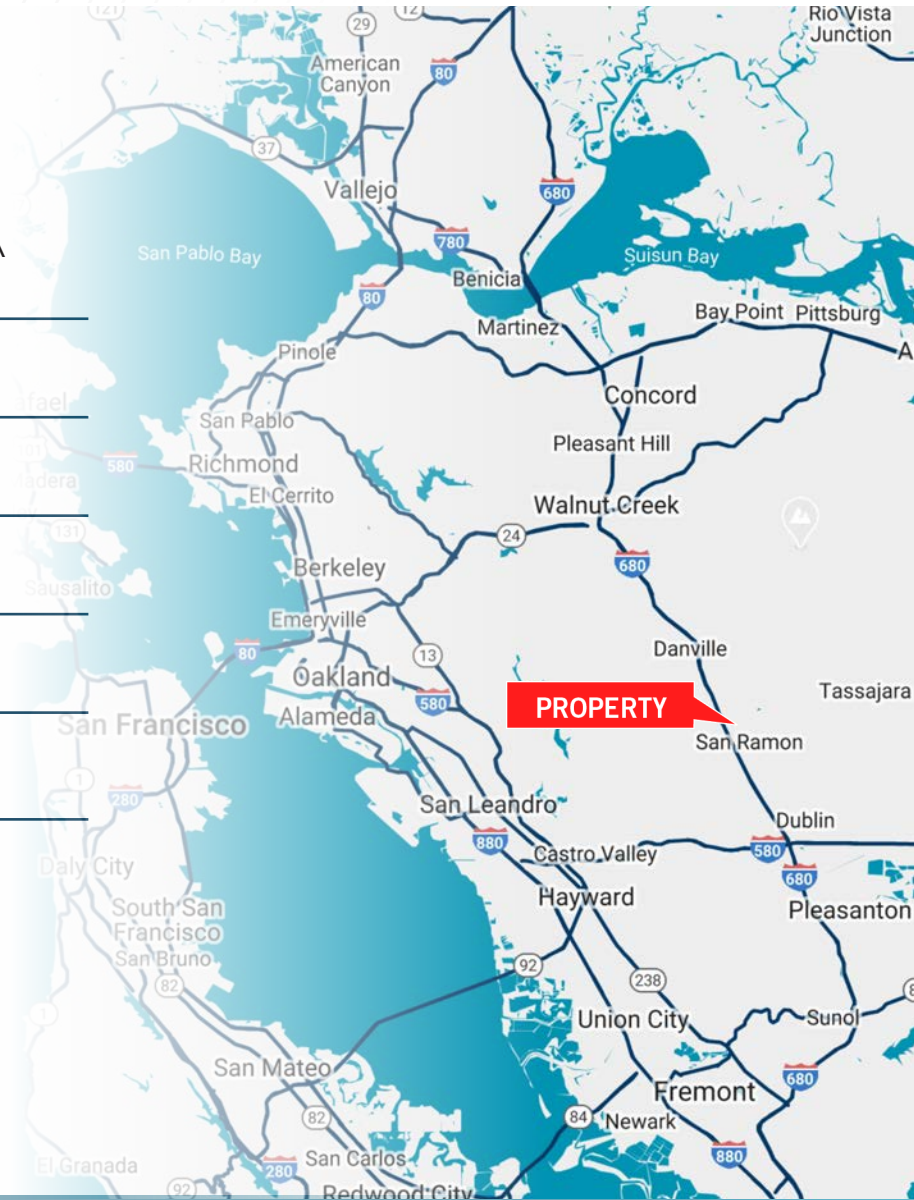
**Build Out:** New modern build out with dimmable LED lights

**Lease Term:** 2/28/2025 Expiration

**Rent:** Offering Space at \$2.00/SF/month, full service

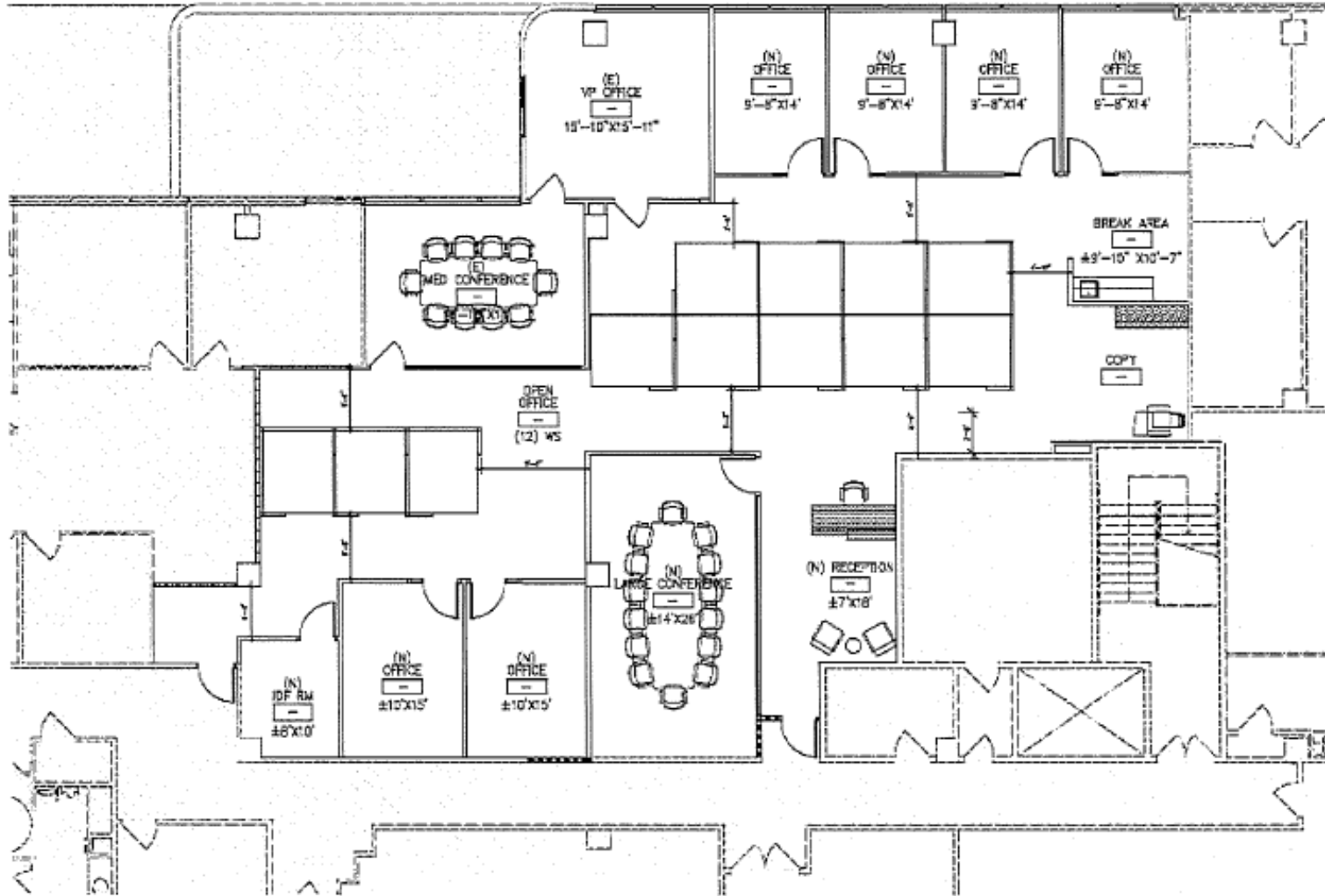
**Furniture:** Nicely furnished (plug and play)

**Commissions:** 6% Commission to outside broker



# FLOOR PLAN

**2010** CROW CANYON  
SUITE 410

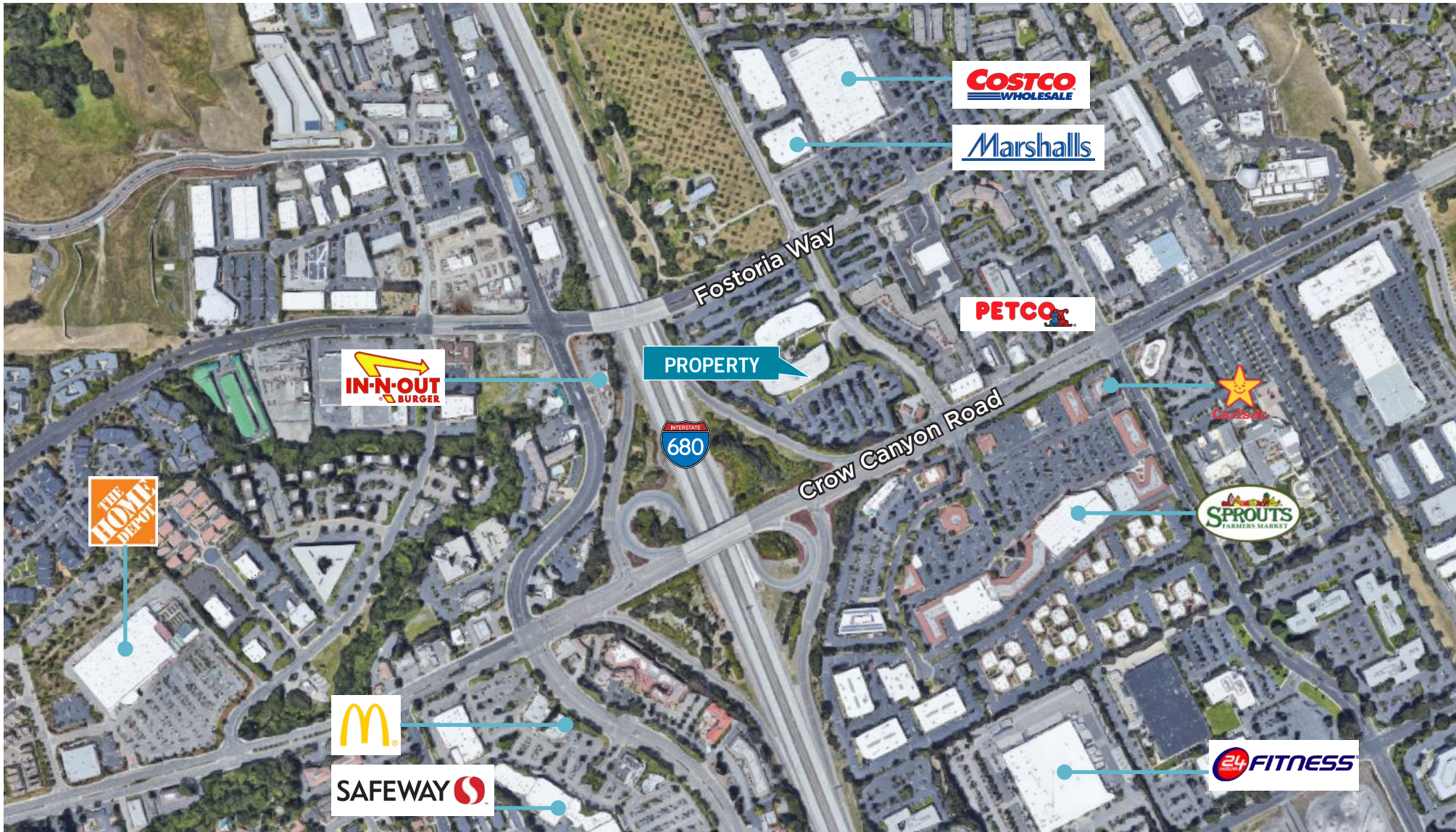


- LEGEND**
- HEADS AND WITH GROUND SLICED
- WALL LEGEND**
- ===== EXTERIOR CONSTRUCTION TO ROOM
  - ===== EXTERIOR 1/2" GIBB MASONRY
  - ===== NEW WALL BOARD PARTITION
  - ===== NEW PARTITION TO OVERSICKE OF CEILING
  - ===== NEW 1/2" GIBB PARTITION



# AMENITIES MAP

**2010** CROW CANYON  
SUITE 410



**JOHN FENNELL**  
Managing Director  
925 274 2802  
John.Fennell@cushwake.com  
LIC #00902673



# PHOTO GALLERY INTERIOR

**2010** CROW CANYON  
SUITE 410



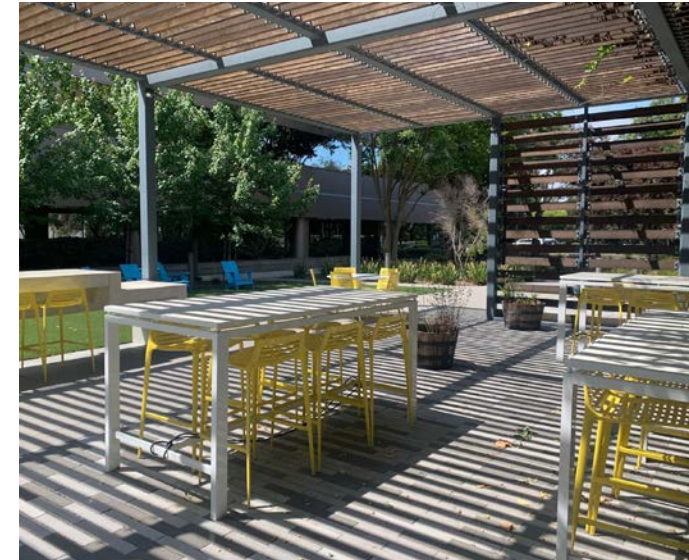
**JOHN FENNELL**  
Managing Director  
925 274 2802  
John.Fennell@cushwake.com  
LIC #00902673





# PHOTO GALLERY COMMON AREAS

**2010** CROW CANYON  
SUITE 410



**JOHN FENNELL**  
Managing Director  
925 274 2802  
John.Fennell@cushwake.com  
LIC #00902673

©2023 Cushman & Wakefield. All rights reserved. The information contained in this communication is strictly confidential. This information has been obtained from sources believed to be reliable but has not been verified. NO WARRANTY OR REPRESENTATION, EXPRESS OR IMPLIED, IS MADE AS TO THE CONDITION OF THE PROPERTY (OR PROPERTIES) REFERENCED HEREIN OR AS TO THE ACCURACY OR COMPLETENESS OF THE INFORMATION CONTAINED HEREIN, AND SAME IS SUBMITTED SUBJECT TO ERRORS, OMISSIONS, CHANGE OF PRICE, RENTAL OR OTHER CONDITIONS, WITHDRAWAL WITHOUT NOTICE, AND TO ANY SPECIAL LISTING CONDITIONS IMPOSED BY THE PROPERTY OWNER(S). ANY PROJECTIONS, OPINIONS OR ESTIMATES ARE SUBJECT TO UNCERTAINTY AND DO NOT SIGNIFY CURRENT OR FUTURE PROPERTY PERFORMANCE.

