

FOR SUBLEASE  
UNIT 100  
**1625 KEBET WAY**  
PORT COQUITLAM, BC



RARE 14,890 SF DISTRIBUTION SPACE WITH UP TO THREE (3) REAR DOCK DOORS

**RATE REDUCED**

**ONLY \$14.95 PSF NET**



**Rick Eastman**  
Personal Real Estate Corporation  
Executive Vice President, Industrial  
+1 604 640 5863  
rick.eastman@ca.cushwake.com

**Kevin Volz**  
Personal Real Estate Corporation  
Vice President, Industrial  
+1 604 640 5851  
kevin.volz@ca.cushwake.com

# FOR SUBLEASE

## UNIT 100

# 1625 KEBET WAY

## PORT COQUITLAM, BC



### LOCATION

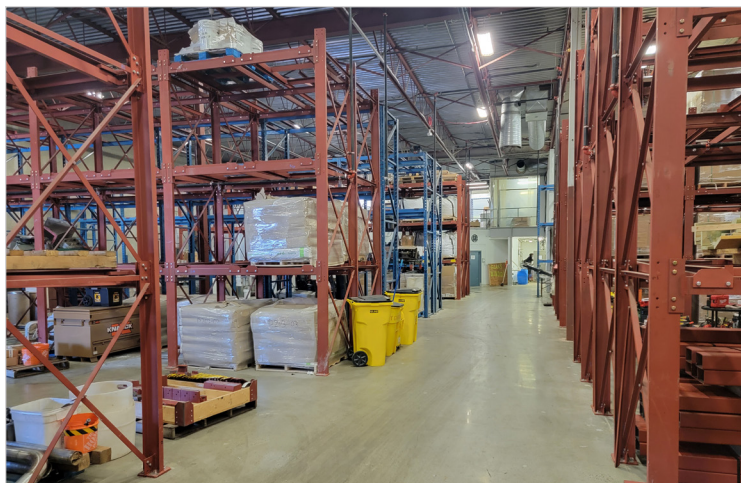
The Premises make up approximately half of a freestanding building at the east end of Kebet Way in Phase 1 of Meridian Industrial Park just off the Mary Hill ByPass. Highway 1 and the Port Mann Bridge are just 5 minutes to the east and Downtown Vancouver is just 30 minutes away.

### ZONING

M-1 Industrial

### UNIT SIZE

Main Floor Office	1,750 SF
Mezzanine	3,315 SF
Warehouse	9,825 SF
<b>Total Area</b>	<b>14,890 SF</b>



### FEATURES

- Two (2) 8' x 10' dock loading doors with levelers and seals
- One (1) 8' x 10' drive-in door (may be converted to dock)
- 21' clear ceilings
- Air-conditioned office and warehouse areas
- Fully sprinklered
- Energy-efficient fluorescent lighting
- 200A, 600V 3-phase electrical service
- Concrete tilt-up construction by Beedie
- Three (3) washrooms
- Lunchroom
- Floor drains below mezzanine
- Outdoor patio area
- Fourteen (14) parking stalls
- Pallet racking available for sale or sub-tenant use



### LEASE RATE

~~\$17.95~~ \$14.95 PSF, net, per annum, plus GST

### ADDITIONAL RENT

\$6.91 PSF estimated for 2024 plus GST inclusive of management fee

### SUBLEASE TERM

To December 30, 2026



### Rick Eastman

Personal Real Estate Corporation  
Executive Vice President, Industrial  
+1 604 640 5863  
rick.eastman@ca.cushwake.com

### Kevin Volz

Personal Real Estate Corporation  
Vice President, Industrial  
+1 604 640 5851  
kevin.volz@ca.cushwake.com

©2024 Cushman & Wakefield ULC. All rights reserved. The information contained in this communication is strictly confidential. This information has been obtained from sources believed to be reliable but has not been verified. NO WARRANTY OR REPRESENTATION, EXPRESS OR IMPLIED, IS MADE AS TO THE CONDITION OF THE PROPERTY (OR PROPERTIES) REFERENCED HEREIN OR AS TO THE ACCURACY OR COMPLETENESS OF THE INFORMATION CONTAINED HEREIN, AND SAME IS SUBMITTED SUBJECT TO ERRORS, OMISSIONS, CHANGE OF PRICE, RENTAL OR OTHER CONDITIONS, WITHDRAWAL WITHOUT NOTICE, AND TO ANY SPECIAL LISTING CONDITIONS IMPOSED BY THE PROPERTY OWNER(S). ANY PROJECTIONS, OPINIONS OR ESTIMATES ARE SUBJECT TO UNCERTAINTY AND DO NOT SIGNIFY CURRENT OR FUTURE PROPERTY PERFORMANCE.