

±8 NET USABLE ACRES

FOR LEASE

1800 GOODYEAR ROAD

BENICIA, CA

PRICE REDUCTION!



PROPERTY HIGHLIGHTS

- » **Great Construction Yard**
- » **±8 Acres of Laydown Yard**
- » **Divisible to:**
 - ~~-Unit A: ±4 acres~~
 - Unit B: ±2.25 acres
 - Unit C: ±5.60 acres

[County Zoning Link](#)

- » **Great Access to I-680**
 - » **Lease Rate: Call Broker**
 - » **Uses must be heavy construction**
- *Note: The lease rate is for yard only**

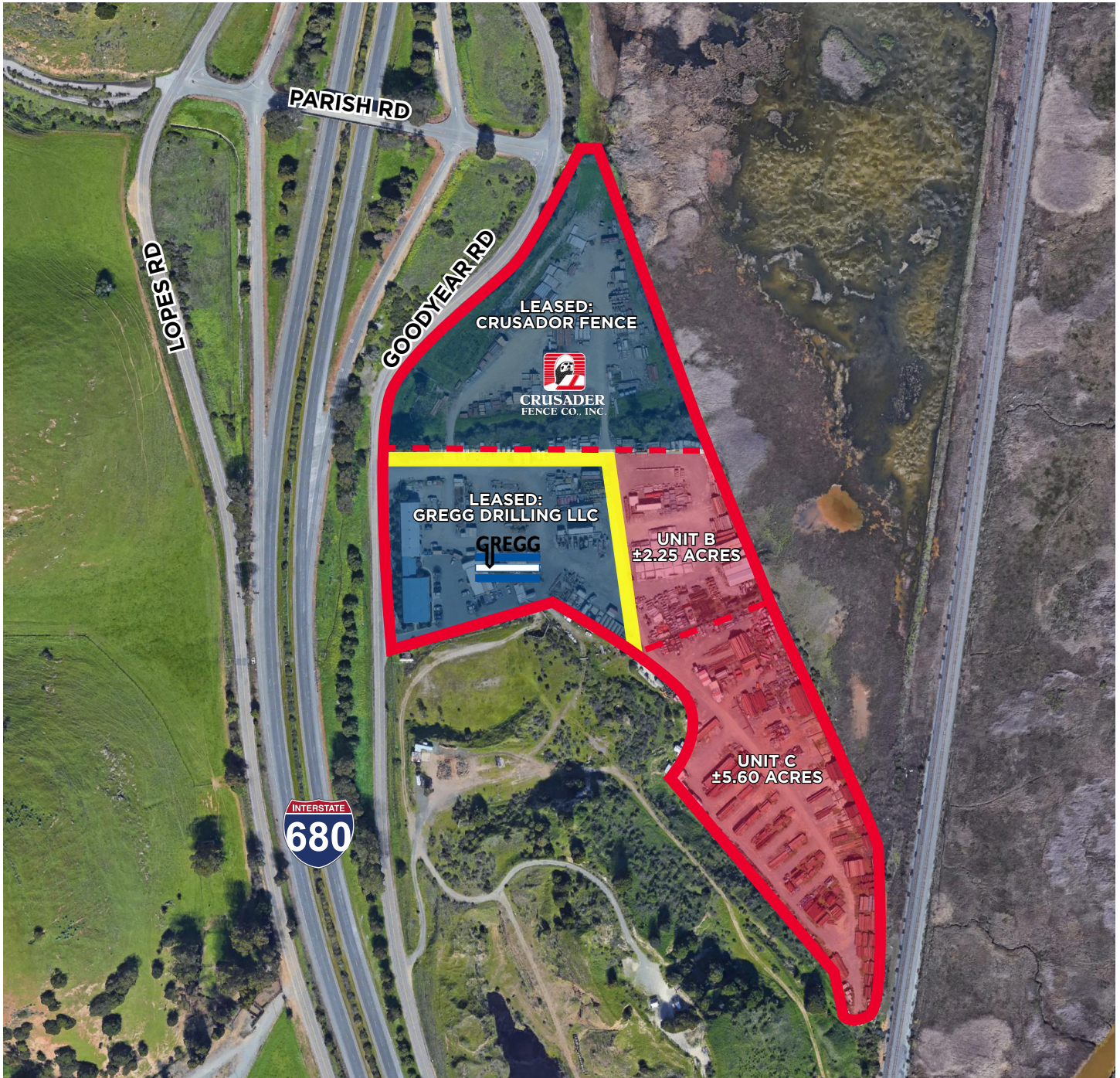
AVAILABLE NOW!

Jay Hagglund
Executive Managing Director
+1 510 918 7922
jay.hagglund@cushwake.com
LIC # 00888011

Ted Gallagher
Director
+1 510 693 8515
ted.gallagher@cushwake.com
LIC # 01467047



AERIAL



 = SHARED ACCESS ROAD

Jay Hagglund
Executive Managing Director
+1 510 918 7922
jay.hagglund@cushwake.com
LIC # 00888011

Ted Gallagher
Director
+1 510 693 8515
ted.gallagher@cushwake.com
LIC # 01467047

AERIAL



Jay Hagglund
Executive Managing Director
+1 510 918 7922
jay.hagglund@cushwake.com
LIC # 00888011

Ted Gallagher
Director
+1 510 693 8515
ted.gallagher@cushwake.com
LIC # 01467047

VIEW FROM I-680



©2022 Cushman & Wakefield. All rights reserved. The information contained in this communication is strictly confidential. This information has been obtained from sources believed to be reliable but has not been verified. NO WARRANTY OR REPRESENTATION, EXPRESS OR IMPLIED, IS MADE AS TO THE CONDITION OF THE PROPERTY (OR PROPERTIES) REFERENCED HEREIN OR AS TO THE ACCURACY OR COMPLETENESS OF THE INFORMATION CONTAINED HEREIN, AND SAME IS SUBMITTED SUBJECT TO ERRORS, OMISSIONS, CHANGE OF PRICE, RENTAL OR OTHER CONDITIONS, WITHDRAWAL WITHOUT NOTICE, AND TO ANY SPECIAL LISTING CONDITIONS IMPOSED BY THE PROPERTY OWNER(S). ANY PROJECTIONS, OPINIONS OR ESTIMATES ARE SUBJECT TO UNCERTAINTY AND DO NOT SIGNIFY CURRENT OR FUTURE PROPERTY PERFORMANCE.

Jay Hagglund
Executive Managing Director
+1 510 918 7922
jay.hagglund@cushwake.com
LIC # 00888011

Ted Gallagher
Director
+1 510 693 8515
ted.gallagher@cushwake.com
LIC # 01467047

