



FOR LEASE

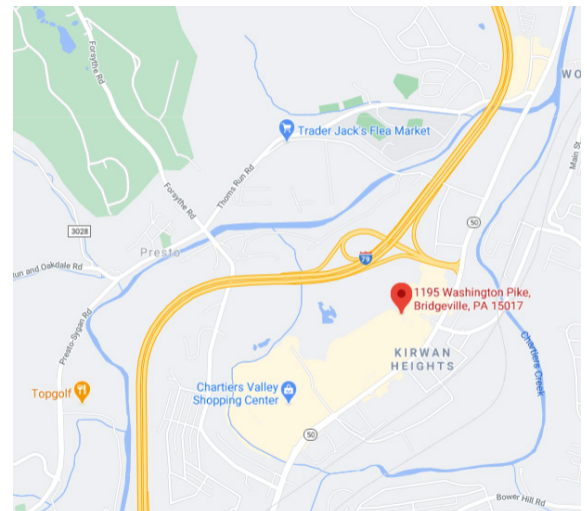
1195 WASHINGTON PIKE

BRIDGEVILLE, PA 15017



PROPERTY FEATURES

- 1,816 to 14,855 RSF available for lease
- Situated on 3.59 acres
- Great natural light
- 2 minutes to the I-79 Interchange
- Abundant nearby retail amenities
- 180 parking spaces
- Full floor opportunity



DARIN SHRIVER

412 391 2602
darin.shriver@cushwake.com
LIC #RS321512

JACK O'DONOGHUE, SIOR

412 391 2621
jack.odonoghue@cushwake.com
LIC #RS143557A

CUSHMAN & WAKEFIELD

310 Grant Street, Suite 1825
Pittsburgh, PA 15219
cushmanwakefield.com

©2023 Cushman & Wakefield. All rights reserved. The information contained in this communication is strictly confidential. This information has been obtained from sources believed to be reliable but has not been verified. NO WARRANTY OR REPRESENTATION, EXPRESS OR IMPLIED, IS MADE AS TO THE CONDITION OF THE PROPERTY (OR PROPERTIES) REFERENCED HEREIN OR AS TO THE ACCURACY OR COMPLETENESS OF THE INFORMATION CONTAINED HEREIN, AND SAME IS SUBMITTED SUBJECT TO ERRORS, OMISSIONS, CHANGE OF PRICE, RENTAL OR OTHER CONDITIONS, WITHDRAWAL WITHOUT NOTICE, AND TO ANY SPECIAL LISTING CONDITIONS IMPOSED BY THE PROPERTY OWNER(S). ANY PROJECTIONS, OPINIONS OR ESTIMATES ARE SUBJECT TO UNCERTAINTY AND DO NOT SIGNIFY CURRENT OR FUTURE PROPERTY PERFORMANCE.



FOR LEASE
1195 WASHINGTON PIKE
BRIDGEVILLE, PA 15017



DARIN SHRIVER
412 391 2602
darin.shriver@cushwake.com
LIC #RS321512

JACK O'DONOGHUE, SIOR
412 391 2621
jack.odonoghue@cushwake.com
LIC #RS143557A

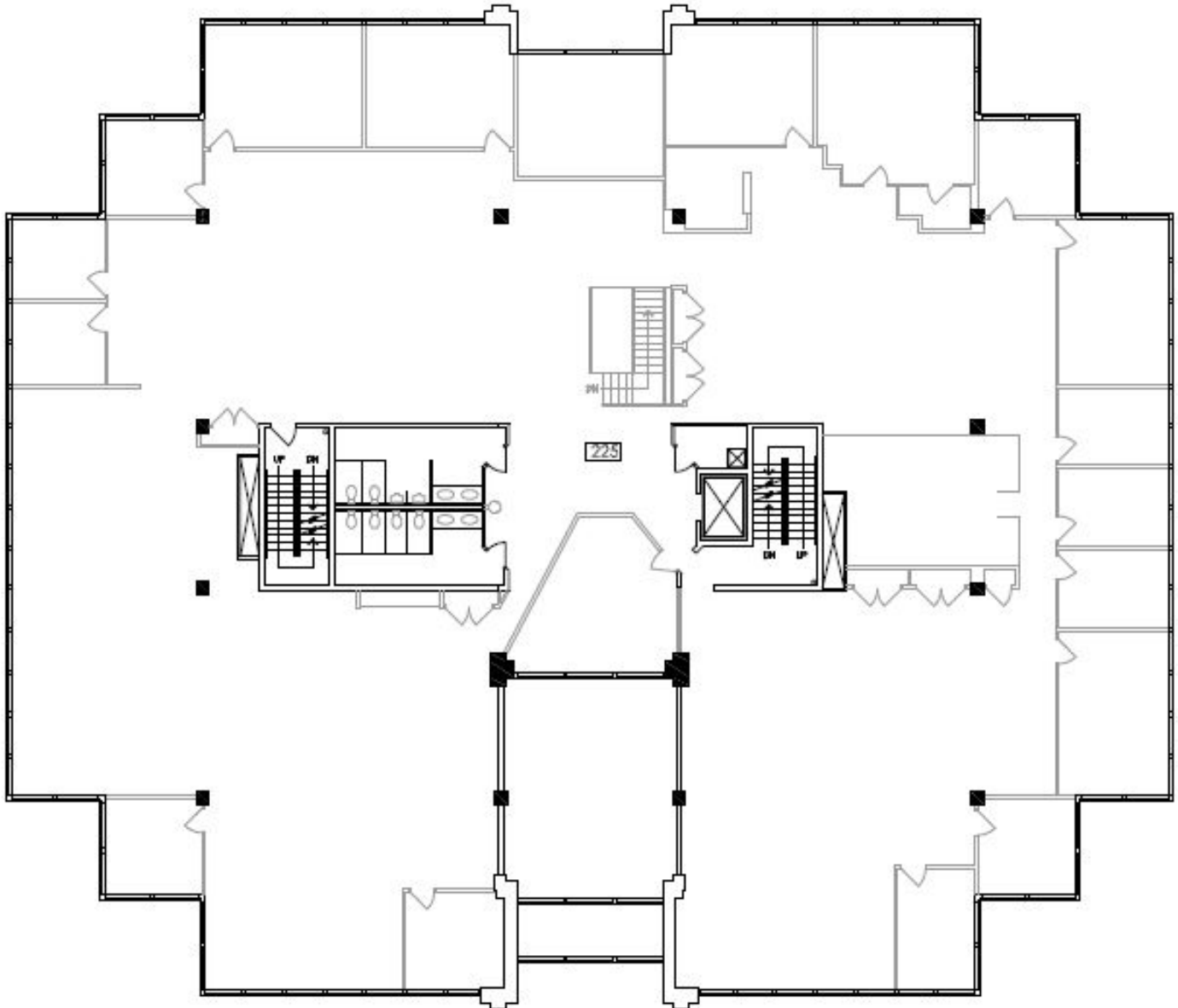
CUSHMAN & WAKEFIELD
310 Grant Street, Suite 1825
Pittsburgh, PA 15219
cushmanwakefield.com

©2023 Cushman & Wakefield. All rights reserved. The information contained in this communication is strictly confidential. This information has been obtained from sources believed to be reliable but has not been verified. NO WARRANTY OR REPRESENTATION, EXPRESS OR IMPLIED, IS MADE AS TO THE CONDITION OF THE PROPERTY (OR PROPERTIES) REFERENCED HEREIN OR AS TO THE ACCURACY OR COMPLETENESS OF THE INFORMATION CONTAINED HEREIN, AND SAME IS SUBMITTED SUBJECT TO ERRORS, OMISSIONS, CHANGE OF PRICE, RENTAL OR OTHER CONDITIONS, WITHDRAWAL WITHOUT NOTICE, AND TO ANY SPECIAL LISTING CONDITIONS IMPOSED BY THE PROPERTY OWNER(S). ANY PROJECTIONS, OPINIONS OR ESTIMATES ARE SUBJECT TO UNCERTAINTY AND DO NOT SIGNIFY CURRENT OR FUTURE PROPERTY PERFORMANCE.



FOR LEASE
1195 WASHINGTON PIKE
BRIDGEVILLE, PA 15017

SECOND FLOOR
FULL FLOOR AVAILABILITY - 14,855 SF



DARIN SHRIVER
412 391 2602
darin.shriver@cushwake.com
LIC #RS321512

JACK O'DONOGHUE, SIOR
412 391 2621
jack.odonoghue@cushwake.com
LIC #RS143557A

CUSHMAN & WAKEFIELD
310 Grant Street, Suite 1825
Pittsburgh, PA 15219
cushmanwakefield.com

©2023 Cushman & Wakefield. All rights reserved. The information contained in this communication is strictly confidential. This information has been obtained from sources believed to be reliable but has not been verified. NO WARRANTY OR REPRESENTATION, EXPRESS OR IMPLIED, IS MADE AS TO THE CONDITION OF THE PROPERTY (OR PROPERTIES) REFERENCED HEREIN OR AS TO THE ACCURACY OR COMPLETENESS OF THE INFORMATION CONTAINED HEREIN, AND SAME IS SUBMITTED SUBJECT TO ERRORS, OMISSIONS, CHANGE OF PRICE, RENTAL OR OTHER CONDITIONS, WITHDRAWAL WITHOUT NOTICE, AND TO ANY SPECIAL LISTING CONDITIONS IMPOSED BY THE PROPERTY OWNER(S). ANY PROJECTIONS, OPINIONS OR ESTIMATES ARE SUBJECT TO UNCERTAINTY AND DO NOT SIGNIFY CURRENT OR FUTURE PROPERTY PERFORMANCE.



FOR LEASE
1195 WASHINGTON PIKE
 BRIDGEVILLE, PA 15017

GREAT HIGHWAY ACCESS & ABUNDANT NEARBY AMENITIES



NEARBY AMENITIES WITHIN MINUTES

INTERSTATE 79 ENTRANCE:
 2 MINUTE DRIVE

DARIN SHRIVER
 412 391 2602
 darin.shriver@cushwake.com
 LIC #RS321512

JACK O'DONOGHUE, SIOR
 412 391 2621
 jack.odonoghue@cushwake.com
 LIC #RS143557A

CUSHMAN & WAKEFIELD
 310 Grant Street, Suite 1825
 Pittsburgh, PA 15219
cushmanwakefield.com

©2023 Cushman & Wakefield. All rights reserved. The information contained in this communication is strictly confidential. This information has been obtained from sources believed to be reliable but has not been verified. NO WARRANTY OR REPRESENTATION, EXPRESS OR IMPLIED, IS MADE AS TO THE CONDITION OF THE PROPERTY (OR PROPERTIES) REFERENCED HEREIN OR AS TO THE ACCURACY OR COMPLETENESS OF THE INFORMATION CONTAINED HEREIN, AND SAME IS SUBMITTED SUBJECT TO ERRORS, OMISSIONS, CHANGE OF PRICE, RENTAL OR OTHER CONDITIONS, WITHDRAWAL WITHOUT NOTICE, AND TO ANY SPECIAL LISTING CONDITIONS IMPOSED BY THE PROPERTY OWNER(S). ANY PROJECTIONS, OPINIONS OR ESTIMATES ARE SUBJECT TO UNCERTAINTY AND DO NOT SIGNIFY CURRENT OR FUTURE PROPERTY PERFORMANCE.