

TOTAL AREA WITH WAREHOUSE

4,050 SF

TIER 2+ DATA CENTER FLOOR PLAN AND SPECIFICATIONS

1,500 SF Usable

1,680 SF Rentable

SUITE 101

1,998 RSF

RACK SYSTEMS

- 48 APC Racks of varying widths

HVAC

- 100 Ton Multistack Modular Chiller with 12.5-ton modules
- 87.5 Ton N+1 capacity
- Cooling rating 200 Watts/SF
- APC chilled water In-Row cooling units arranged in N+1 capacity

ELECTRICAL

- Two 80 KW APC PX80 UPS
- Full batteries
- Configured in N+1 capacity
- Third PX80 can be added for a total capacity of 240 KW
- Dual Rack PDUs in each rack
- Single 500 KW generator

FIBER PROVIDERS

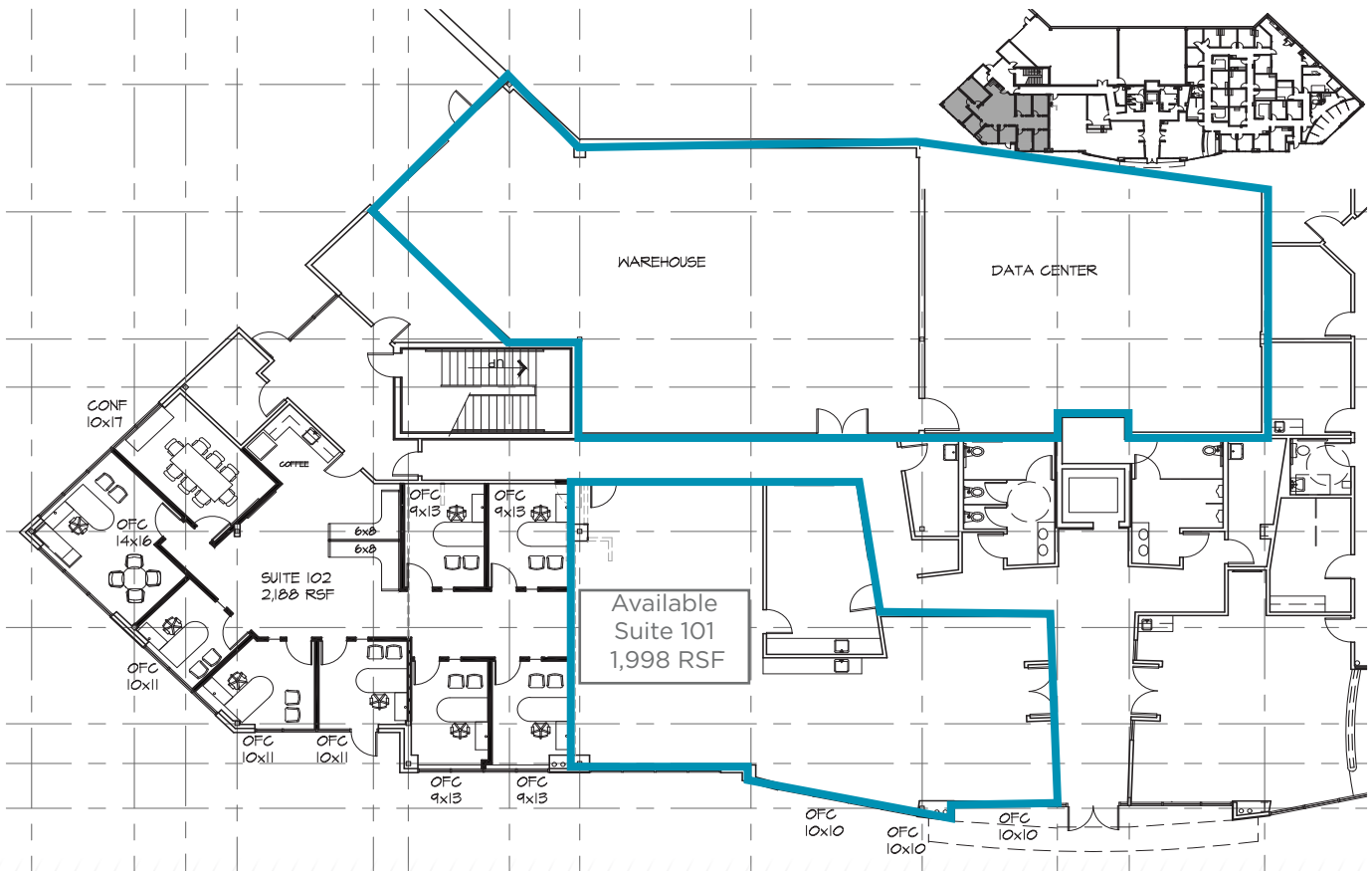
- AT&T
- Google
- Comcast
- Consolidated
- Level 3

FIRE PROTECTION

- FM 200 dry agent suppression

SECURITY

- Card Access
- Biometric Access
- CCTV Monitoring





Contact

MARTY GILCHRIST, CCIM
Senior Associate
+1 816 216 5655
marty.gilchrist@cushwake.com



Bird's Eye View



Contact

MARTY GILCHRIST, CCIM
Senior Associate
+1 816 216 5655
marty.gilchrist@cushwake.com

4600 Madison Avenue, Suite 800
Kansas City, MO 64112
Main +1 816 221 2200
Fax +1 816 842 2798
cushmanwakefield.com