

333 E MAIN STREET SUITE 500

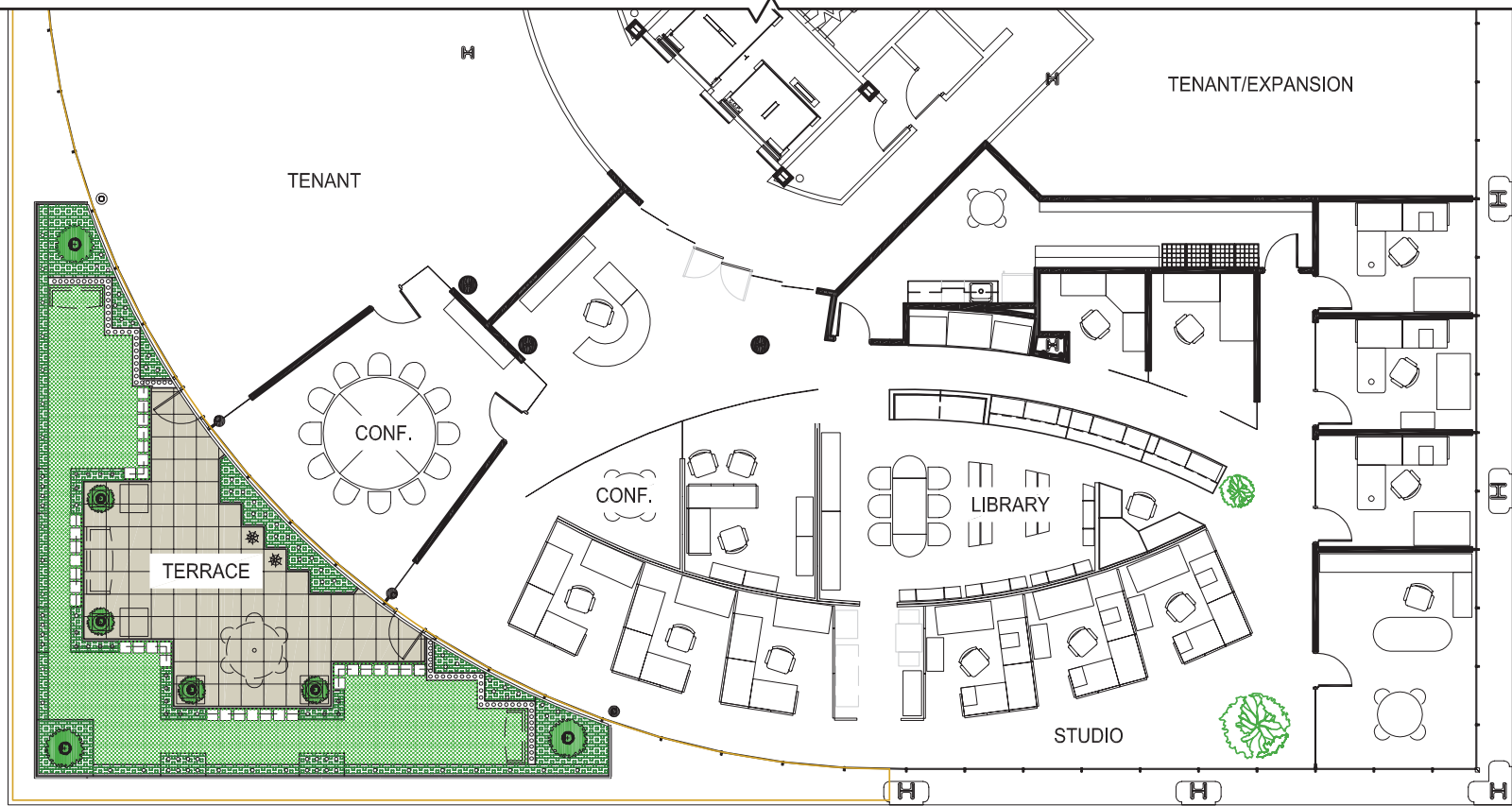
LOUISVILLE, KY 40202

FOR LEASE | 5,283 SF



**CUSHMAN &
WAKEFIELD**

Commercial Kentucky



333 E MAIN STREET, SUITE 500

LOUISVILLE, KY 40202

HIGHLIGHTS

- 5,283 sf of Class A office space located on the 5th floor of Preston Pointe, with furniture available
- Located across the street from Slugger Field and within walking distance to Yum! Center, Whiskey Row, Nulu and Waterfront Park
- Lots of natural light and access to a rooftop patio/green space
- Parking spots available for lease both inside the building and attached parking lot

333 E MAIN STREET, SUITE 500

LOUISVILLE, KY 40202

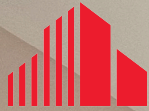


AREA MAP

333 E MAIN STREET, SUITE 500

LOUISVILLE, KY 40202





**CUSHMAN &
WAKEFIELD**

Commercial Kentucky

BRENT DOLEN, SIOR, CCIM

Senior Director

+1 502 589 5150 ext. 262

bdolen@commercialkentucky.com

E.P. SCHERER

Senior Director

+1 502 589 5150 ext. 234

epscherer@commercialkentucky.com

CUSHMAN & WAKEFIELD | COMMERCIAL KENTUCKY

333 E Main Street, Suite 510

Louisville, KY 40202

Main +1 502 589 5150

www.commercialkentucky.com

©2024 Cushman & Wakefield. All rights reserved. The information contained in this communication is strictly confidential. This information has been obtained from sources believed to be reliable but has not been verified. NO WARRANTY OR REPRESENTATION, EXPRESS OR IMPLIED, IS MADE AS TO THE CONDITION OF THE PROPERTY (OR PROPERTIES) REFERENCED HEREIN OR AS TO THE ACCURACY OR COMPLETENESS OF THE INFORMATION CONTAINED HEREIN, AND SAME IS SUBMITTED SUBJECT TO ERRORS, OMISSIONS, CHANGE OF PRICE, RENTAL OR OTHER CONDITIONS, WITHDRAWAL WITHOUT NOTICE, AND TO ANY SPECIAL LISTING CONDITIONS IMPOSED BY THE PROPERTY OWNER(S). ANY PROJECTIONS, OPINIONS OR ESTIMATES ARE SUBJECT TO UNCERTAINTY AND DO NOT SIGNIFY CURRENT OR FUTURE PROPERTY PERFORMANCE.