

FOR LEASE

Owned and Operated by



Plymouth Ponds I

3555 Holly Lane, Plymouth, MN

Up to 12,814 SF Available



Property Highlights

- Convenient location near Plymouth City Center and retail development
- Quick access to Highway 55 and I-494
- Master-planned Business Park consisting of seven 24' clear buildings totaling more than 700,000 sf and one 18' clear, 83,000 sf showroom building



LEASING INFO & CONTACT

Brent Masica
Jason Meyer

+1 952 893 8231 / brent.masica@cushwake.com
+1 952 820 8735 / jason.j.meyer@cushwake.com



This is not an offer or acceptance of an offer to lease space. A lease will only be offered or made in a written agreement signed by landlord. No representation or warranty of any kind is made by landlord unless set forth in a written definitive lease executed by the landlord.

DESCRIPTION



DESCRIPTION

Property Highlights

Building:	76,463 sf Total	2024 Estimated Tax/CAM:	\$4.05 psf Tax \$2.25 psf CAM \$6.30 psf Total
Clear Height:	24'	Lease Rates:	Negotiable

Vacancies

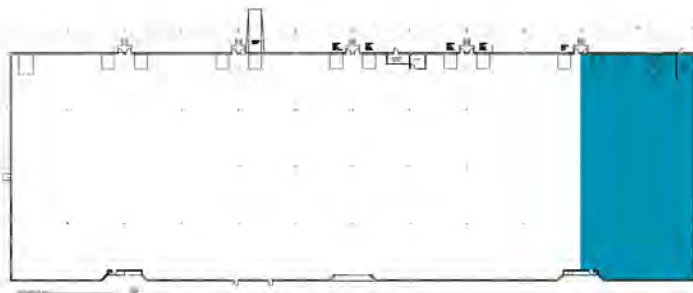
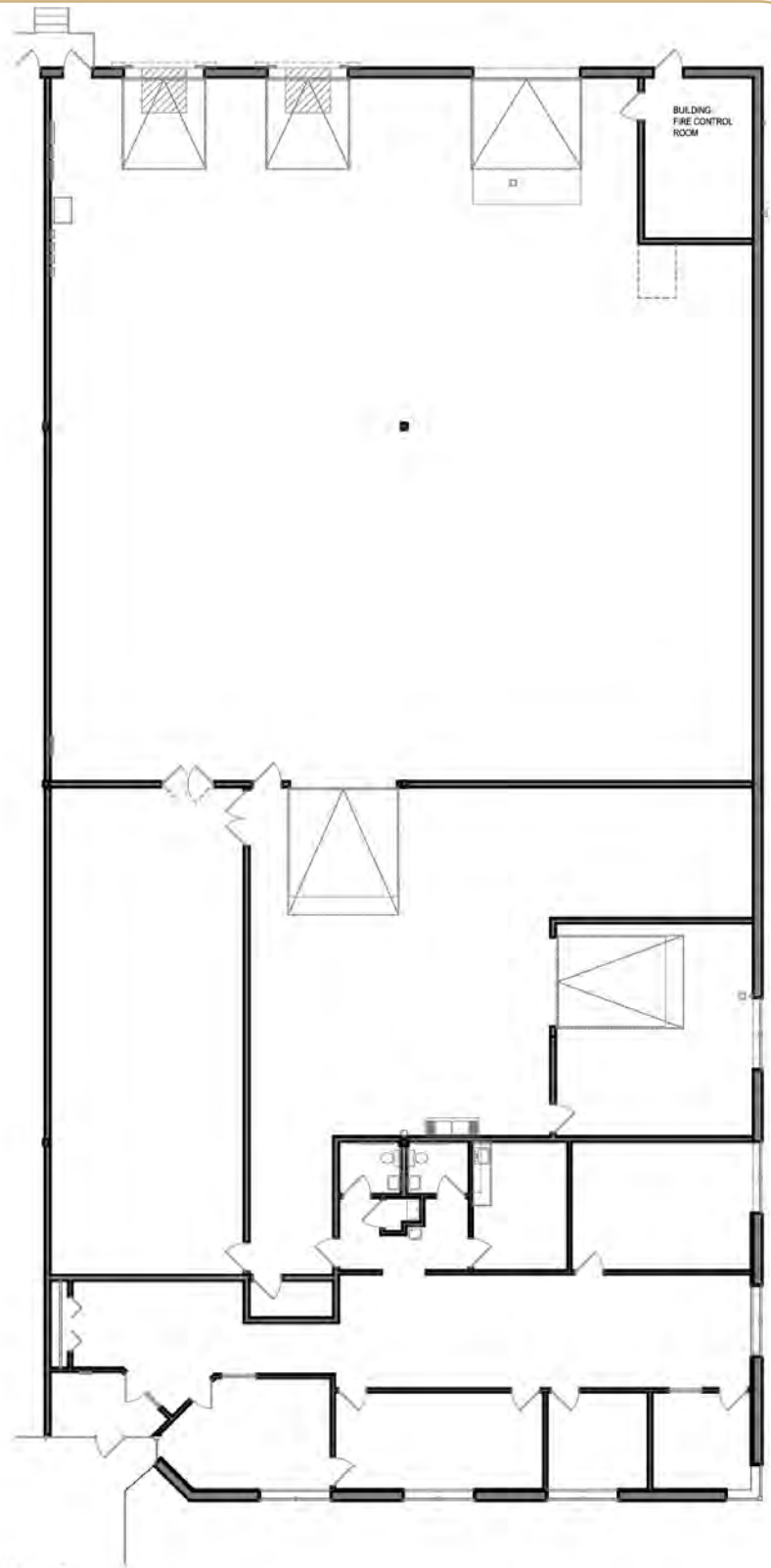
Suite	Total	Office	Lab/Tech	Warehouse	Mechanical	Loading	Space Notes
10	12,587 SF	2,625 SF	3,719 SF	6,182 SF	61 SF	2 docks 1 drive-in	<ul style="list-style-type: none"> Available now Rare end-cap with great parking
50	12,814 SF	3,764 SF	0 SF	8,988 SF	62 SF	2 docks	<ul style="list-style-type: none"> Available May 1, 2024

AVAILABLE NOW

SUITE 10

2,625 SF Office
3,719 SF Lab/Tech
6,182 SF Warehouse
61 SF Mechanical
12,587 SF Total

2 docks | 1 drive-in

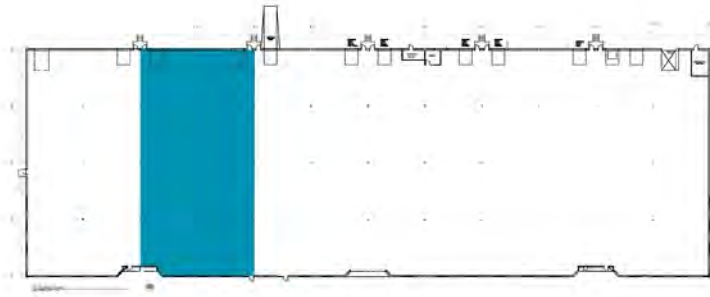
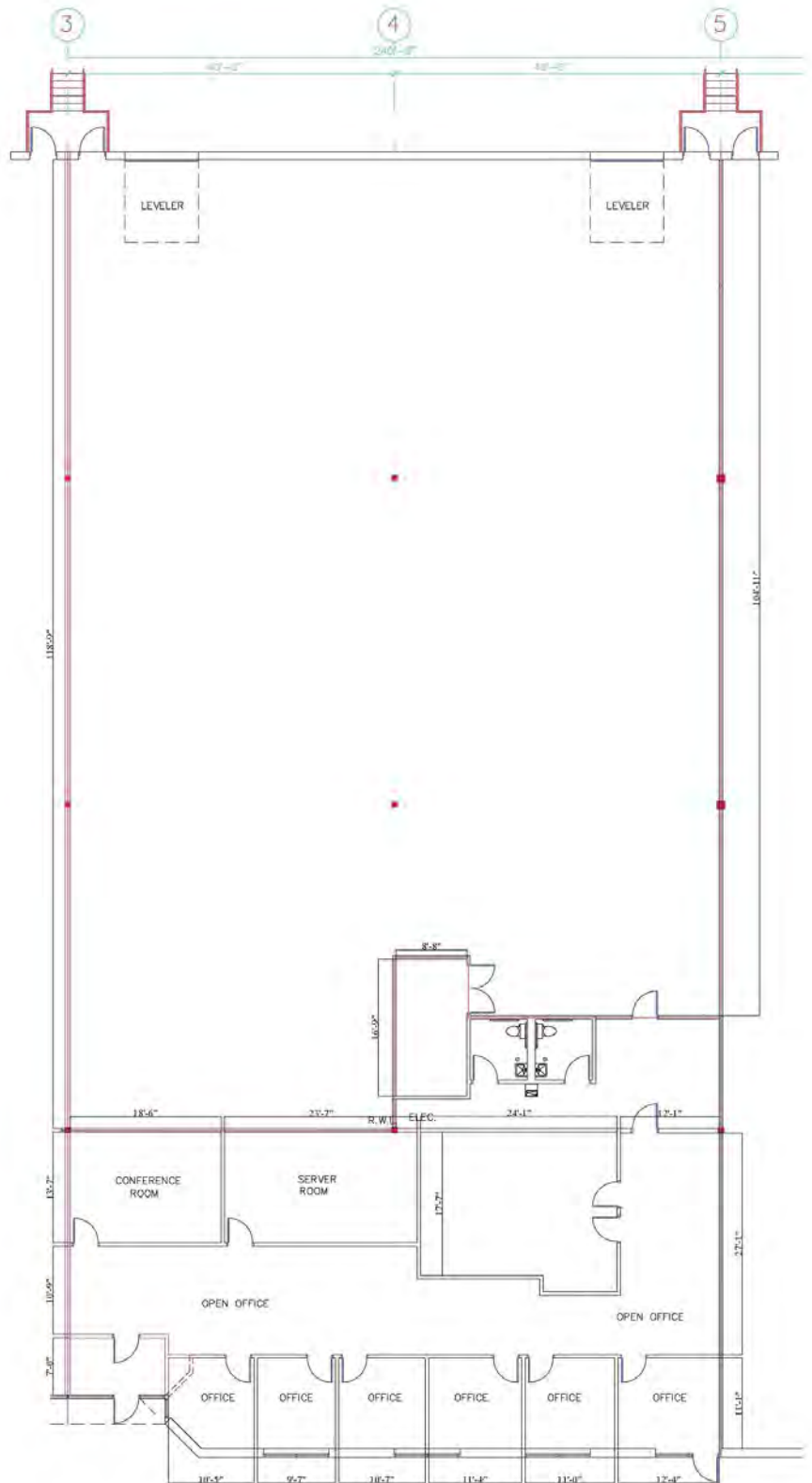


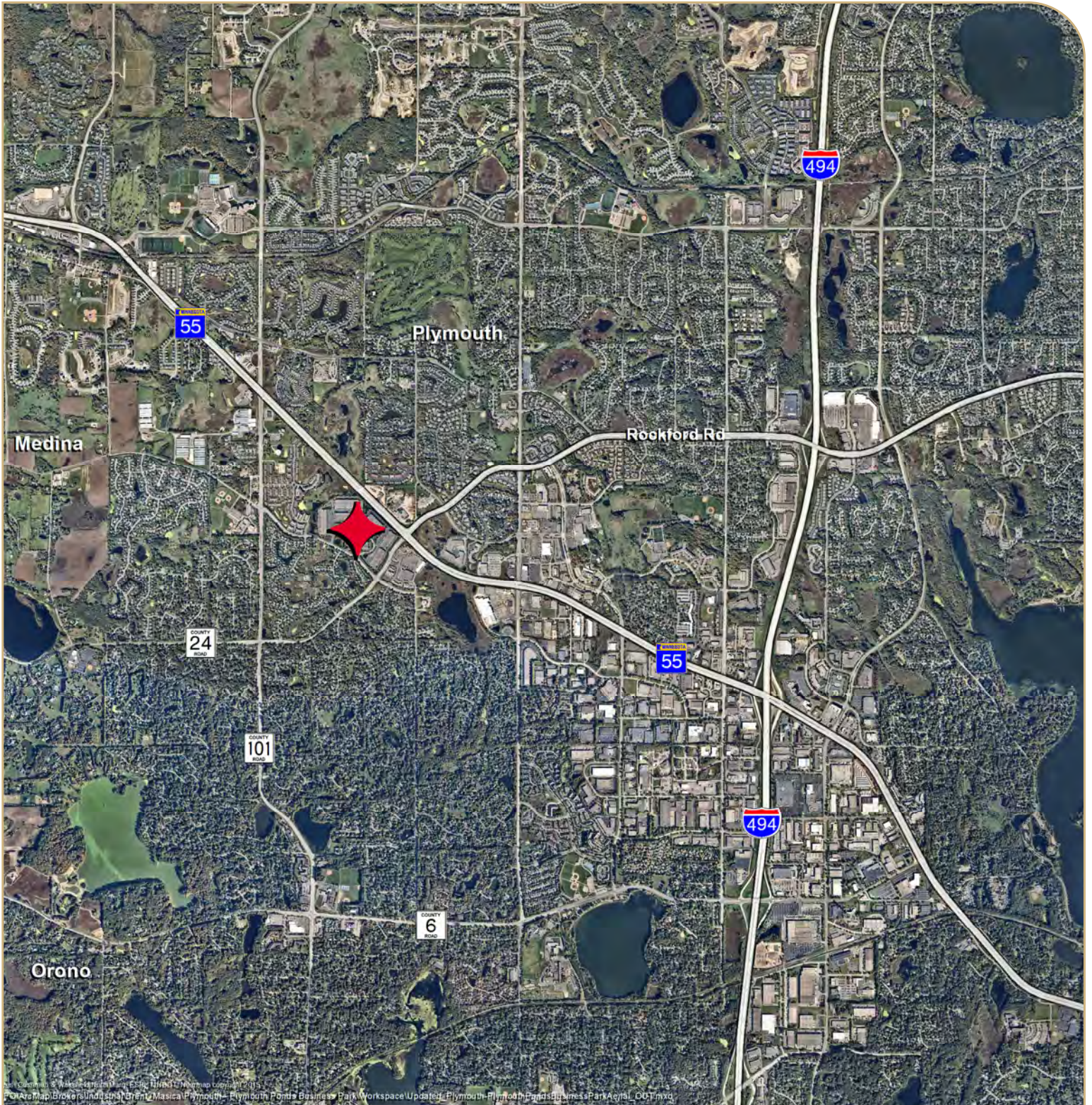
AVAILABLE MAY 1, 2024

SUITE 50

3,764 SF Office
8,988 SF Warehouse
62 SF Mechanical
12,814 SF Total

2 docks





Brent Masica +1 952 893 8231 / brent.masica@cushwake.com
Jason Meyer +1 952 820 8735 / jason.j.meyer@cushwake.com

©2023 Cushman & Wakefield NO WARRANTY OR REPRESENTATION, EXPRESS OR IMPLIED, IS MADE TO THE ACCURACY OR COMPLETENESS OF THE INFORMATION CONTAINED HEREIN, AND SAME IS SUBMITTED SUBJECT TO ERRORS, OMISSIONS, CHANGE OF PRICE, RENTAL OR OTHER CONDITIONS, WITHDRAWAL WITHOUT NOTICE, AND TO ANY SPECIAL LISTING CONDITIONS IMPOSED BY THE PROPERTY OWNER(S). AS APPLICABLE, WE MAKE NO REPRESENTATION AS TO THE CONDITION OF THE PROPERTY (OR PROPERTIES) IN QUESTION.