

Freeway Visibility

CROWN SIGNAGE AVAILABLE

Property Highlights

- 2,500 - 19,175 RSF available
- \$23.00 per rentable square foot, full service
- 3.75/1,000 parking ratio
- Tenant improvement allowance available
- I-15 and I-80 access less than 1 minute
- Efficient floorplates
- Freeway visibility
- Building crown signage for qualified Tenant

Justin Bailey

Director

+1 801 303 5493

justin.bailey@cushwake.com

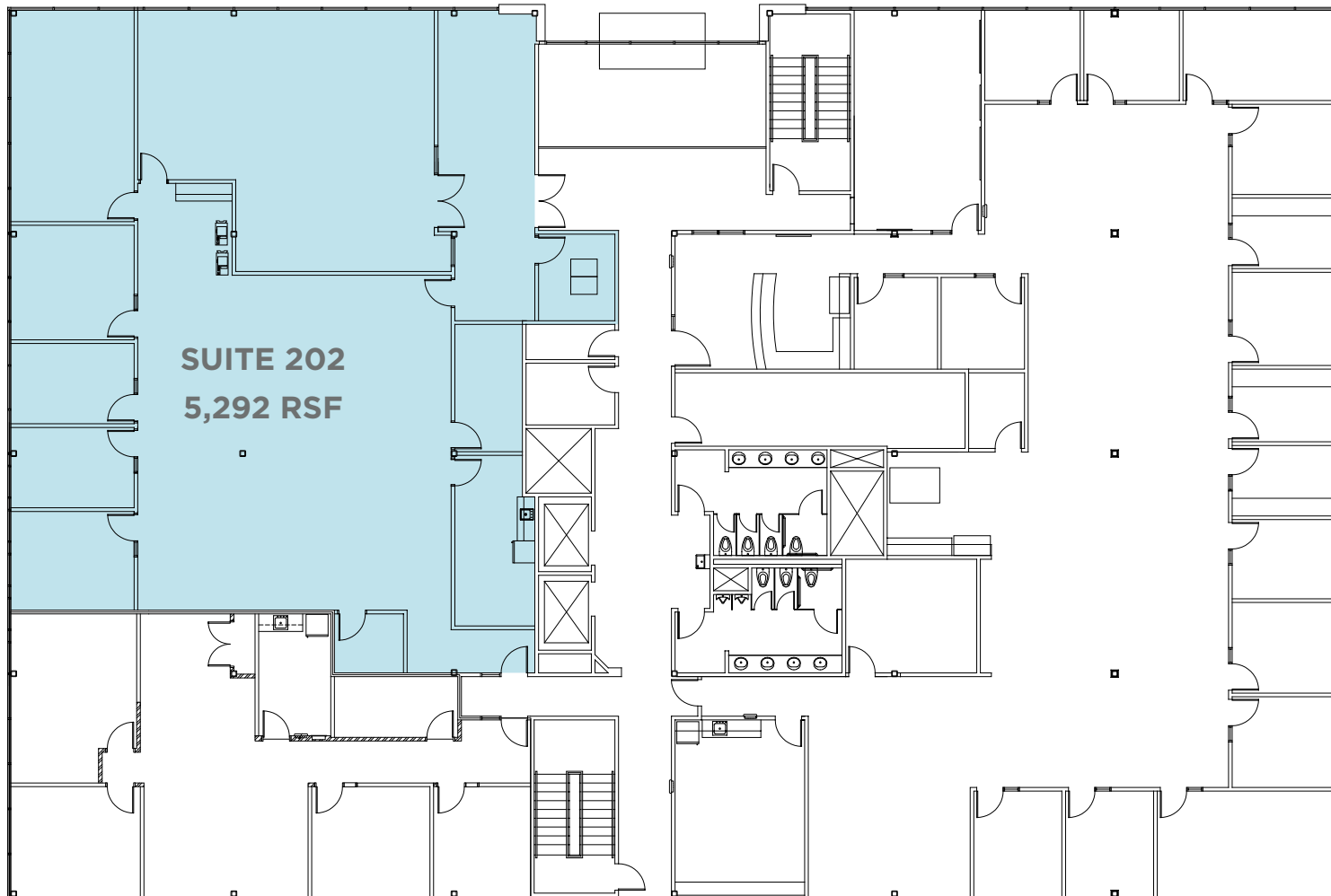
170 South Main, Suite 1600

Salt Lake City, UT 84101

Main +1 801 322 2000

cushmanwakefield.com

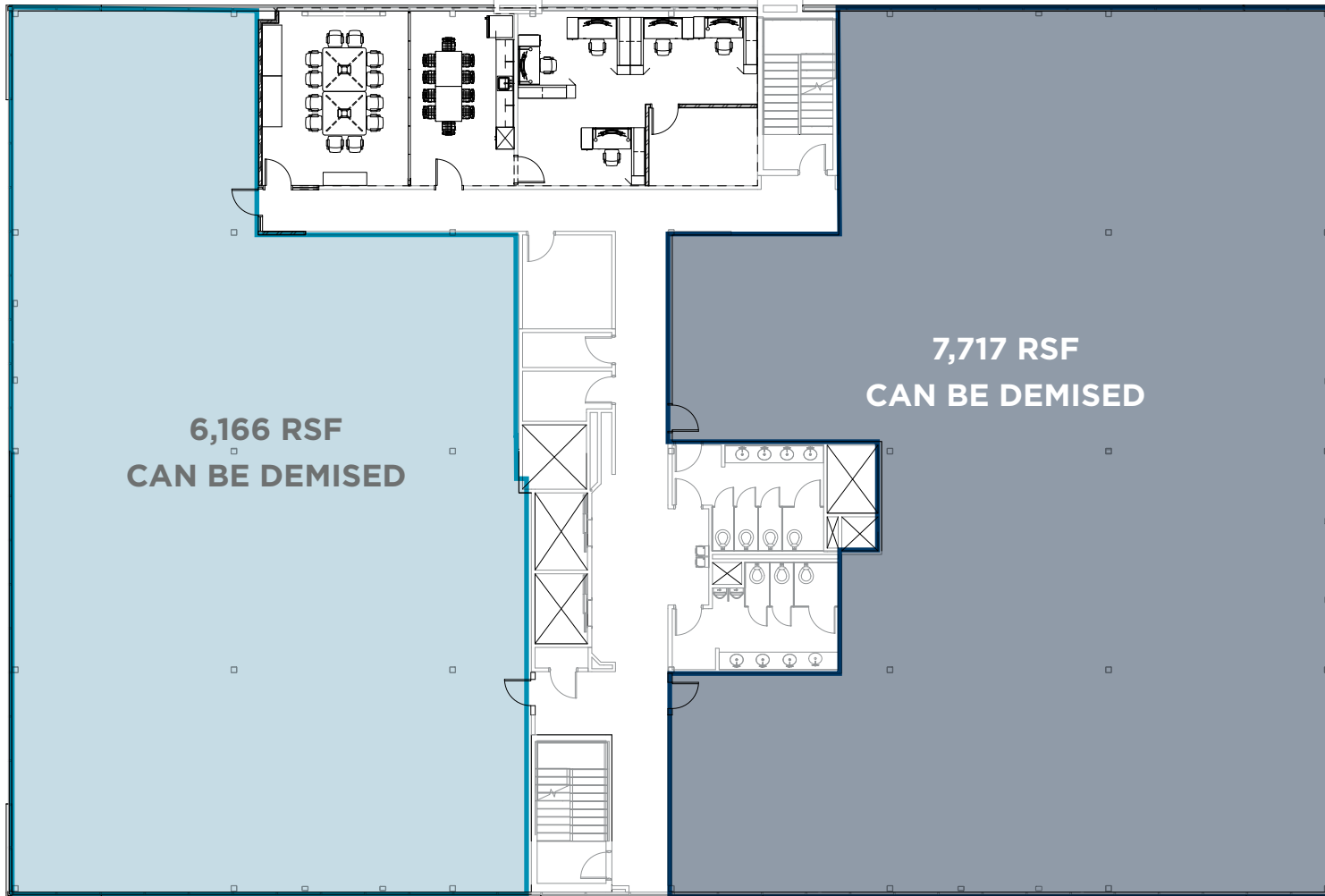
Second Floor



Justin Bailey
Director
+1 801 303 5493
justin.bailey@cushwake.com

170 South Main, Suite 1600
Salt Lake City, UT 84101
Main +1 801 322 2000
cushmanwakefield.com

Third Floor / 13,883 RSF CONTIGUOUS



Justin Bailey
Director
+1 801 303 5493
justin.bailey@cushwake.com

170 South Main, Suite 1600
Salt Lake City, UT 84101
Main +1 801 322 2000
cushmanwakefield.com

Location Map



Justin Bailey
Director
+1 801 303 5493
justin.bailey@cushwake.com

170 South Main, Suite 1600
Salt Lake City, UT 84101
Main +1 801 322 2000
cushmanwakefield.com