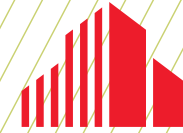


FOR SALE OR LEASE

**18,000 SF**



**CUSHMAN &  
WAKEFIELD**

**PRICE REDUCTION**

***CLICK HERE FOR VIRTUAL TOUR***

**MARKETHOUSE BUILDING**

**289 5TH STREET EAST - FLOOR 2, ST. PAUL, MN**

---

# PROPERTY HIGHLIGHTS

## ASKING PRICE

- \$1,395,000

## LEASE RATE

- Negotiable

## SQUARE FOOTAGE

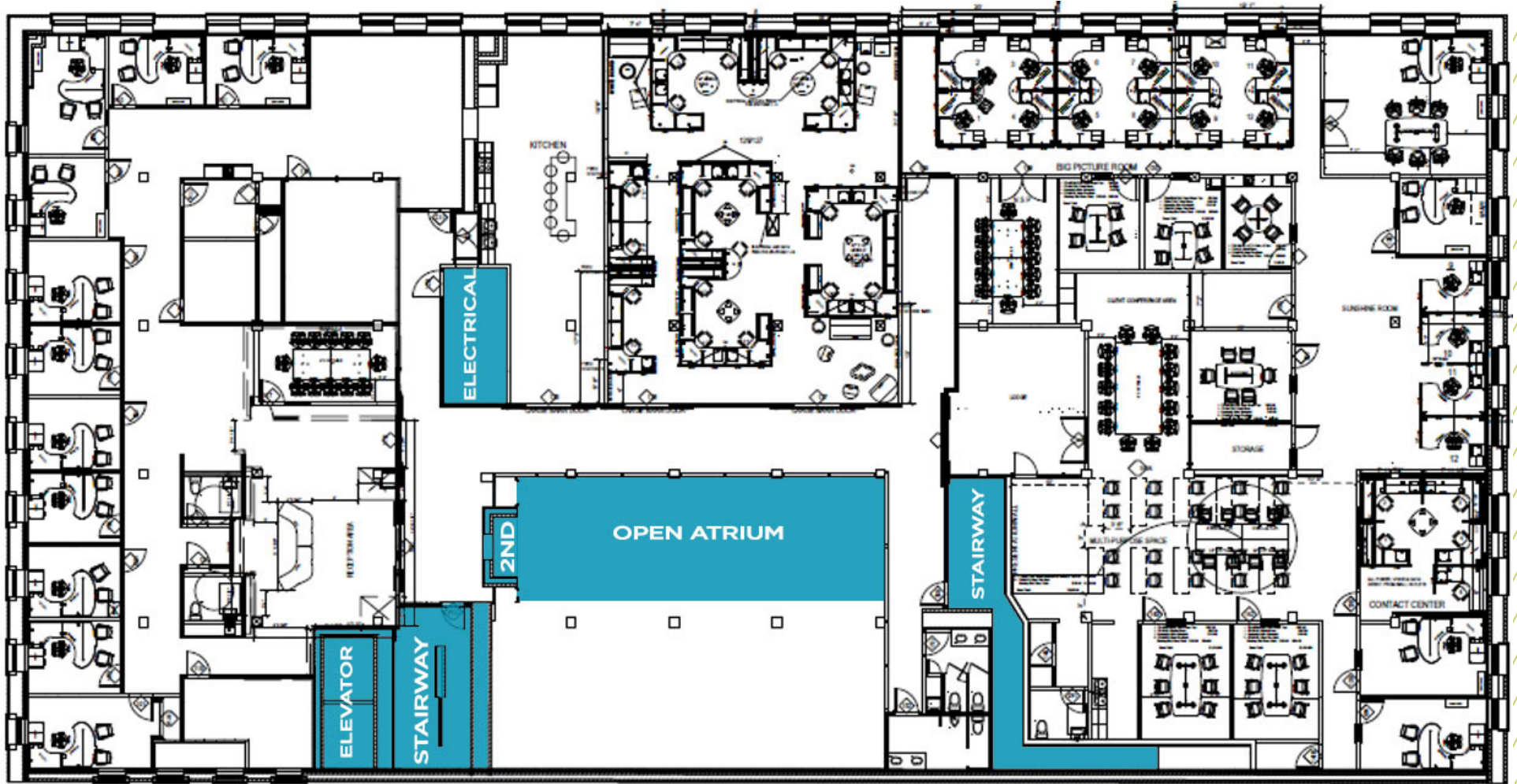
- Rentable - 18,000 SF (entire 2nd floor with shared elevator)
- Usable - 16,000 SF

## SPACE AMENITIES

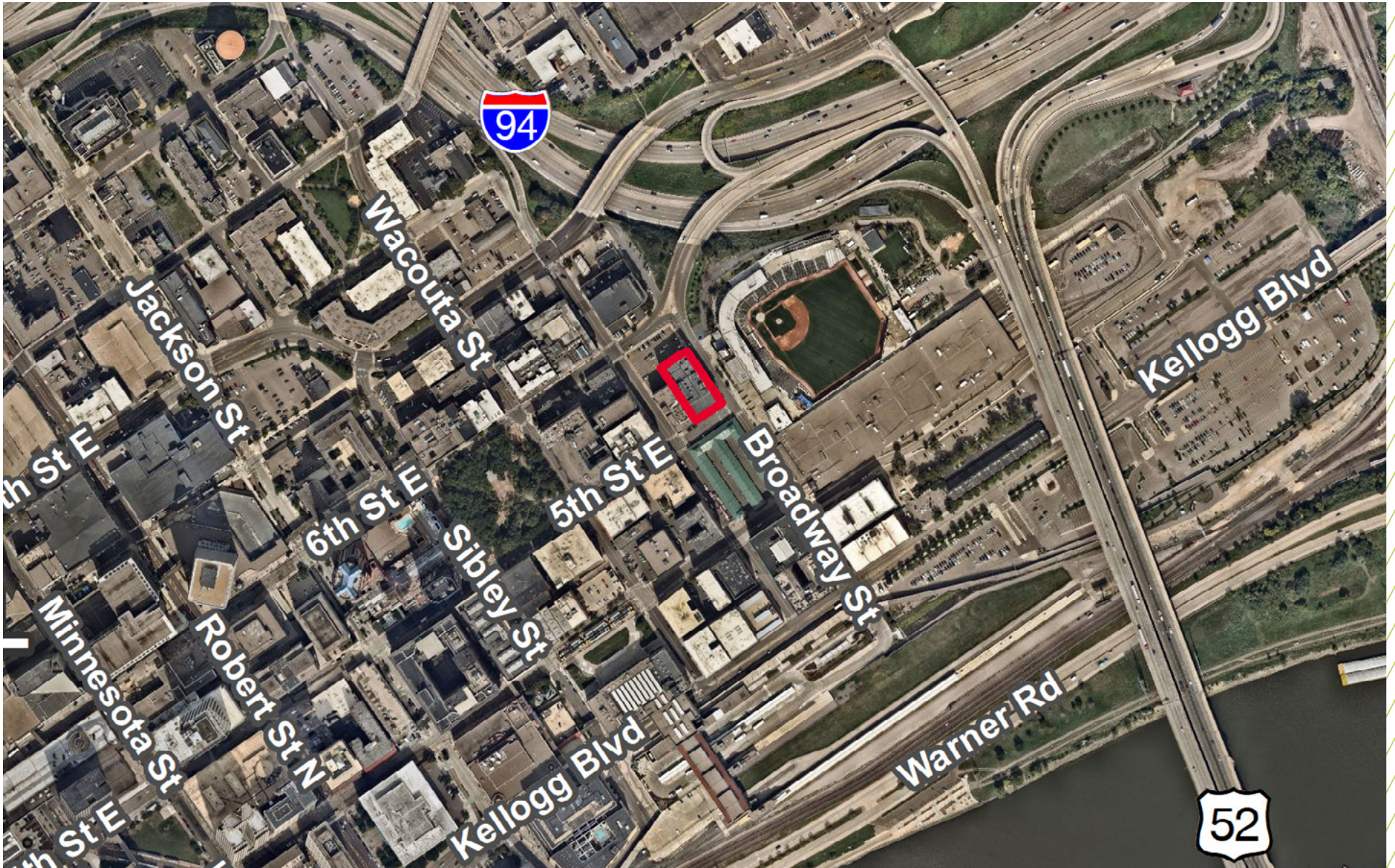
- Well-appointed lounge area
- Full kitchen and bar with 2 refrigerators, wine refrigerator and kegerator
- Two (2) private bathrooms with showers
- One (1) private bathroom and two (2) common bathrooms
- Small gym with treadmill, elliptical machine and free weights



## Floor 2 - 18,000 SF



FLOOR  
PLAN



# LOCATION **AERIAL**



DEMOGRAPHICS (WITHIN 5 MILES)

**353,813**  
Population

**\$60,881**  
Median Household Income

**210,351**  
Daytime Population

LOCATION  
**MAP**

# PROPERTY PHOTOS



SUNSHINE ROOM



BAR AREA



ATRIUM



HALLWAY

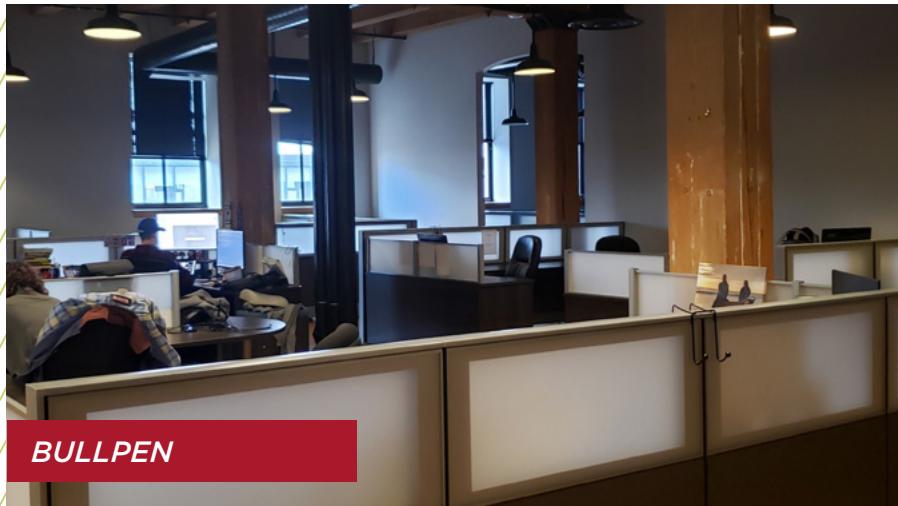
# PROPERTY PHOTOS



PING PONG & DARTS



GYM



BULLPEN



BALLPARK

# CONTACT INFORMATION

## **AARON BARNARD, SIOR, CCIM**

Senior Director  
aaron.barnard@cushwake.com  
+1 952 465 3372

## **RYAN HAMPSON**

Senior Associate  
ryan.hampson@cushwake.com  
+1 952 465 3309

3500 American Blvd W | Suite 200  
Minneapolis, MN 55431  
cushmanwakefield.com

