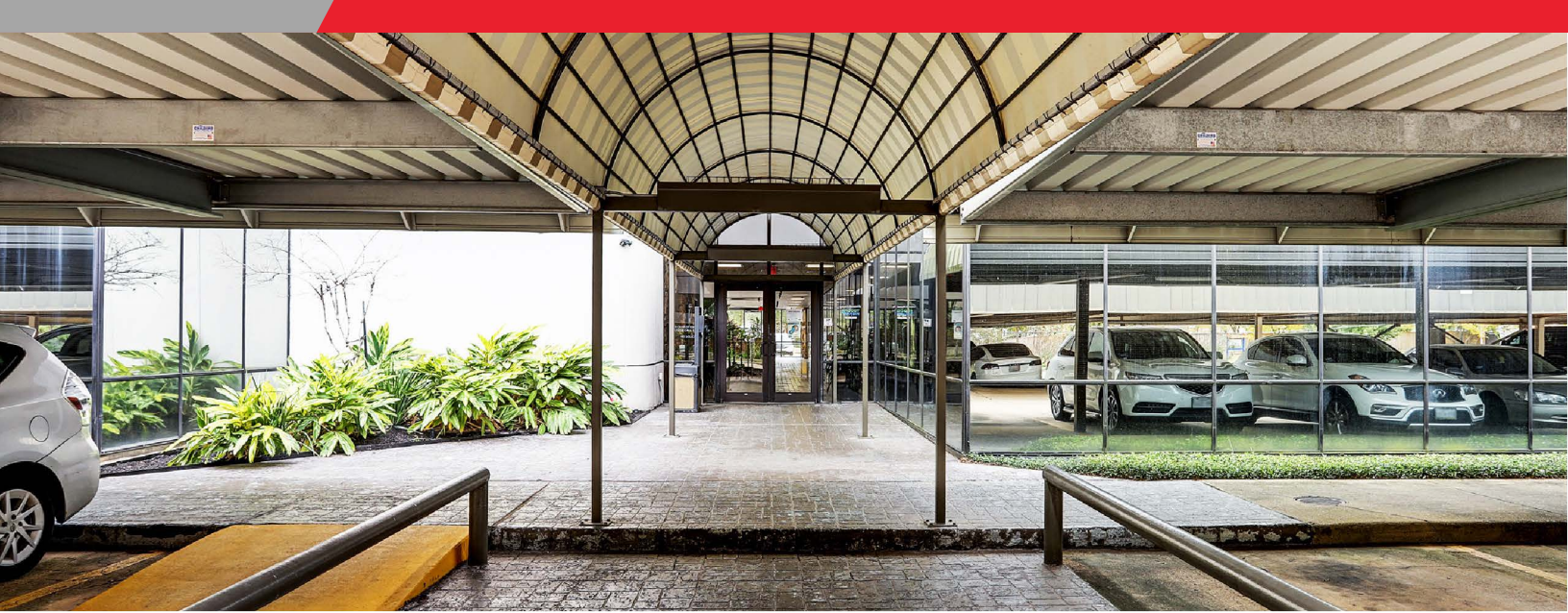




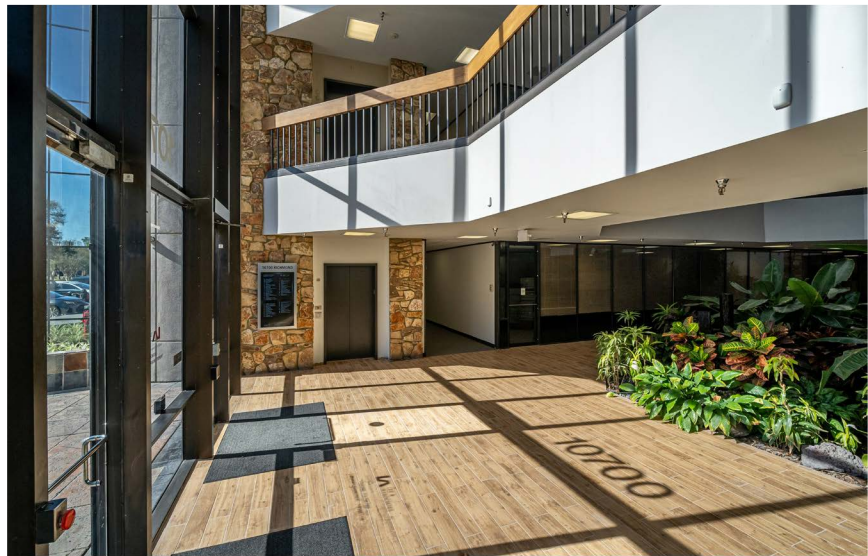
**10700
RICHMOND AVE**

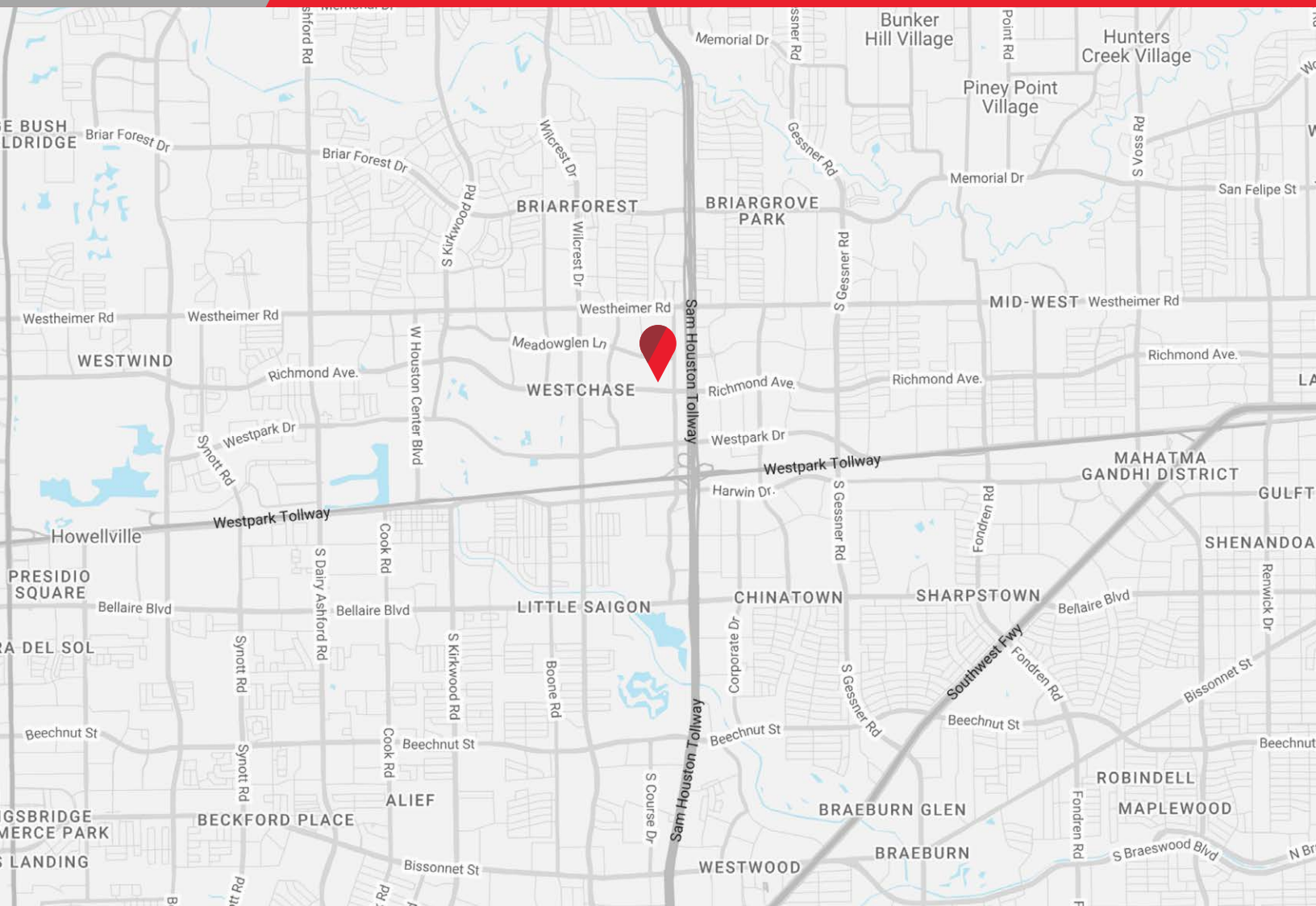
HOUSTON, TX 77042



AMENITIES

- Key card access
- Security system





10700 RICHMOND AVE



139,072 SF Office Building



397 SF-5,410 SF Available



3.7/1,000 SF Parking Ratio

LEASE:
\$15.50 PSF/YR

OPEX:
\$7.14 PSF/YR



For more information, please contact:

ROBERT LACOURE

Senior Director
+1 832 919 8425
robert.lacoure@cushwake.com

JILL NESLONEY

Director
+1 832 699 3001
jill.nesloney@cushwake.com

BRYCE ADAMS

Associate
+1 832 919 8424
bryce.adams@cushwake.com

1330 Post Oak Blvd., Suite 2700 | Houston, TX 77056 | +1 713 877 1700 | cushmanwakefield.com

©2023 Cushman & Wakefield. All rights reserved. The information contained in this communication is strictly confidential. This information has been obtained from sources believed to be reliable but has not been verified. NO WARRANTY OR REPRESENTATION, EXPRESS OR IMPLIED, IS MADE AS TO THE CONDITION OF THE PROPERTY (OR PROPERTIES) REFERENCED HEREIN OR AS TO THE ACCURACY OR COMPLETENESS OF THE INFORMATION CONTAINED HEREIN, AND SAME IS SUBMITTED SUBJECT TO ERRORS, OMISSIONS, CHANGE OF PRICE, RENTAL OR OTHER CONDITIONS, WITHDRAWAL WITHOUT NOTICE, AND TO ANY SPECIAL LISTING CONDITIONS IMPOSED BY THE PROPERTY OWNER(S). ANY PROJECTIONS, OPINIONS OR ESTIMATES ARE SUBJECT TO UNCERTAINTY AND DO NOT SIGNIFY CURRENT OR FUTURE PROPERTY PERFORMANCE.