








# FOR LEASE

**Park 100 | Building 111**  
7102-7196 Lakeview Parkway W. Drive  
Indianapolis, Indiana



18,911 SF

## Property Features

-  78,000 SF building size
-  7.91 acres total site size
-  14' clear height
-  Ample car parking
-  Zionsville Road/71st Street signage

## Current Availabilities

Suite 7102 - 9,176 SF

Suite 7114 - 9,735 SF

Owned By

**maple<sup>tree</sup>**

Ed Beehner  
Mapletree Investments  
+1 312 761 9477  
ed.beehner@mapletree.com.sc

Leased By

**CUSHMAN & WAKEFIELD**

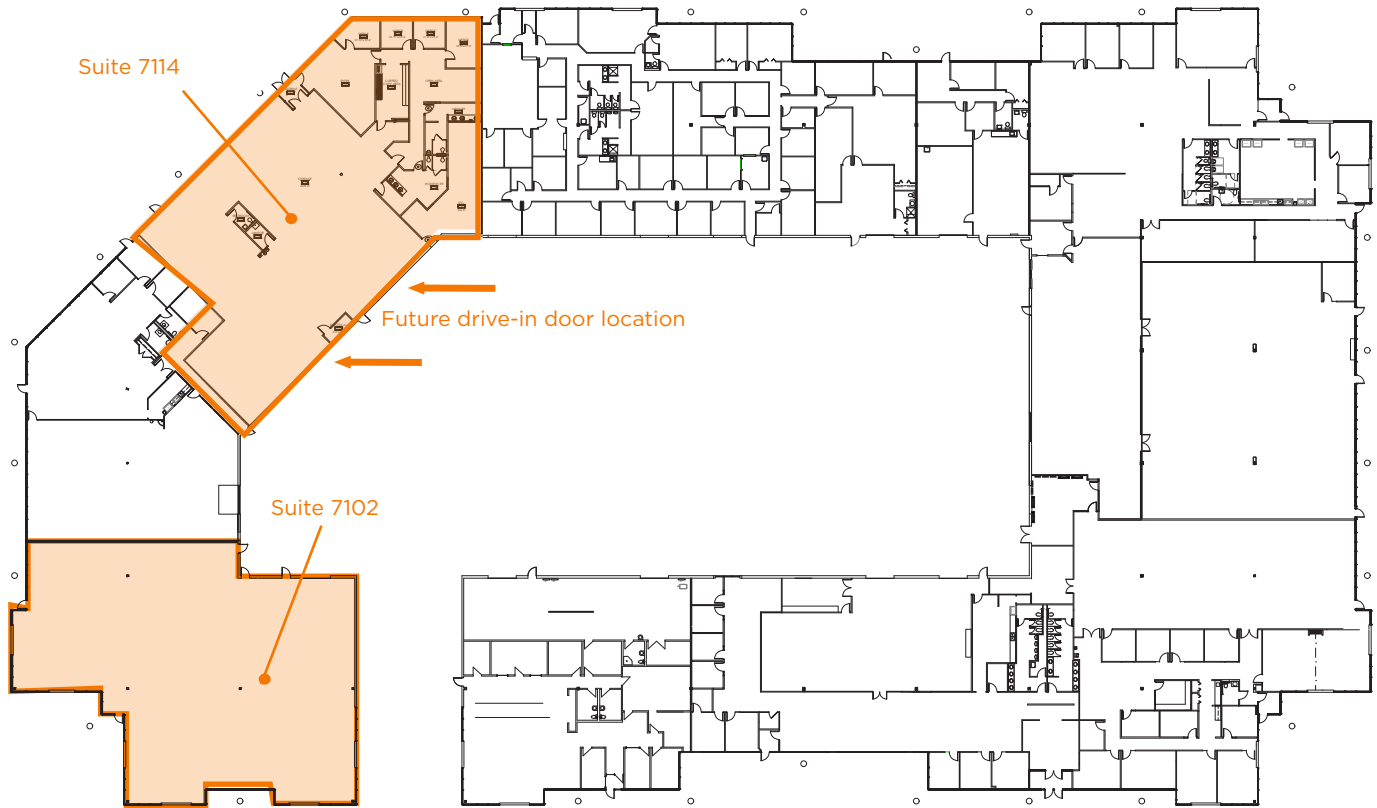
Kevin Archer  
Senior Director  
+1 317 218 7217  
kevin.archer@cushwake.com

Joshua Graham  
Director  
+1 317 639 0491  
joshua.graham@cushwake.com

Jon R. Owens, SIOR  
Managing Director  
+1 317 639 0447  
jon.owens@cushwake.com

# 7102-7196 LAKEVIEW PARKWAY W. DRIVE

## SITE PLAN



## Current Availabilities

### Suite 7102

- >>> 9,176 SF available (divisible)
- >>> 100 % warehouse
- >>> Office build-to-suit
- >>> One (1) drive-in door

### Suite 7114

- >>> 9,735 SF available (divisible)
- >>> Ability to add multiple drive-in doors
- >>> Office demo underway
- >>> Ability for fully climate controlled warehouse

Owned By

**maple<sup>tree</sup>**

Ed Beehner  
Mapletree Investments  
+1 312 761 9477  
ed.beehner@mapletree.com.sc

Leased By

**CUSHMAN & WAKEFIELD**

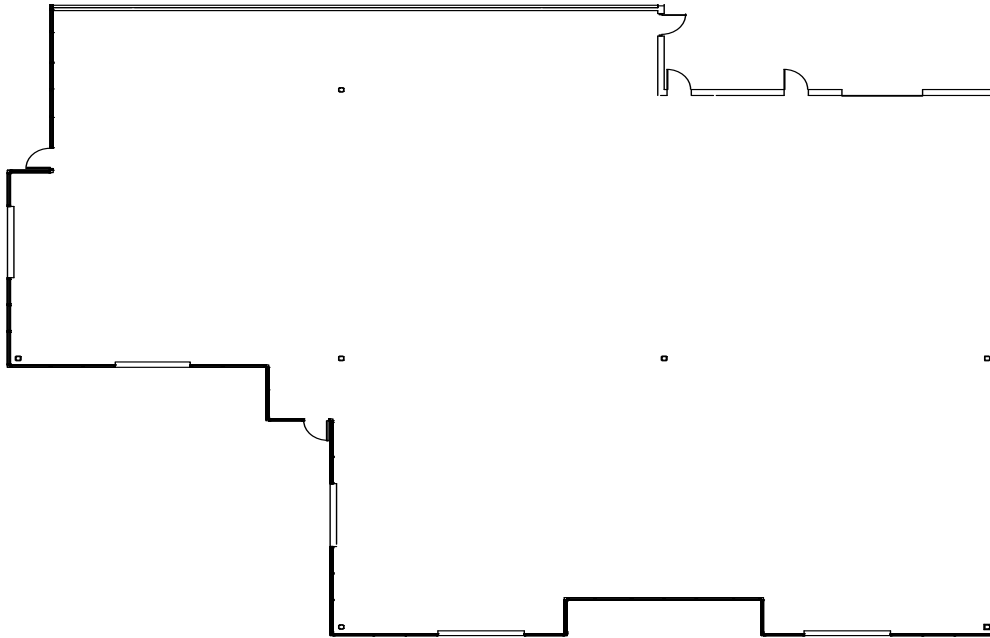
Kevin Archer  
Senior Director  
+1 317 218 7217  
kevin.archer@cushwake.com

Joshua Graham  
Director  
+1 317 639 0491  
joshua.graham@cushwake.com

Jon R. Owens, SIOR  
Managing Director  
+1 317 639 0447  
jon.owens@cushwake.com

# 7102-7195 LAKEVIEW PARKWAY W. DRIVE

## SUITE 7102 - 9,176 SF



- >>> 9,176 SF available (divisible)
- >>> 100 % warehouse
- >>> Office build-to-suit
- >>> One (1) drive-in door

Owned By

**maple<sup>tree</sup>**

Ed Beehner  
Mapletree Investments  
+1 312 761 9477  
ed.beehner@mapletree.com.sg

Leased By

 **CUSHMAN & WAKEFIELD**

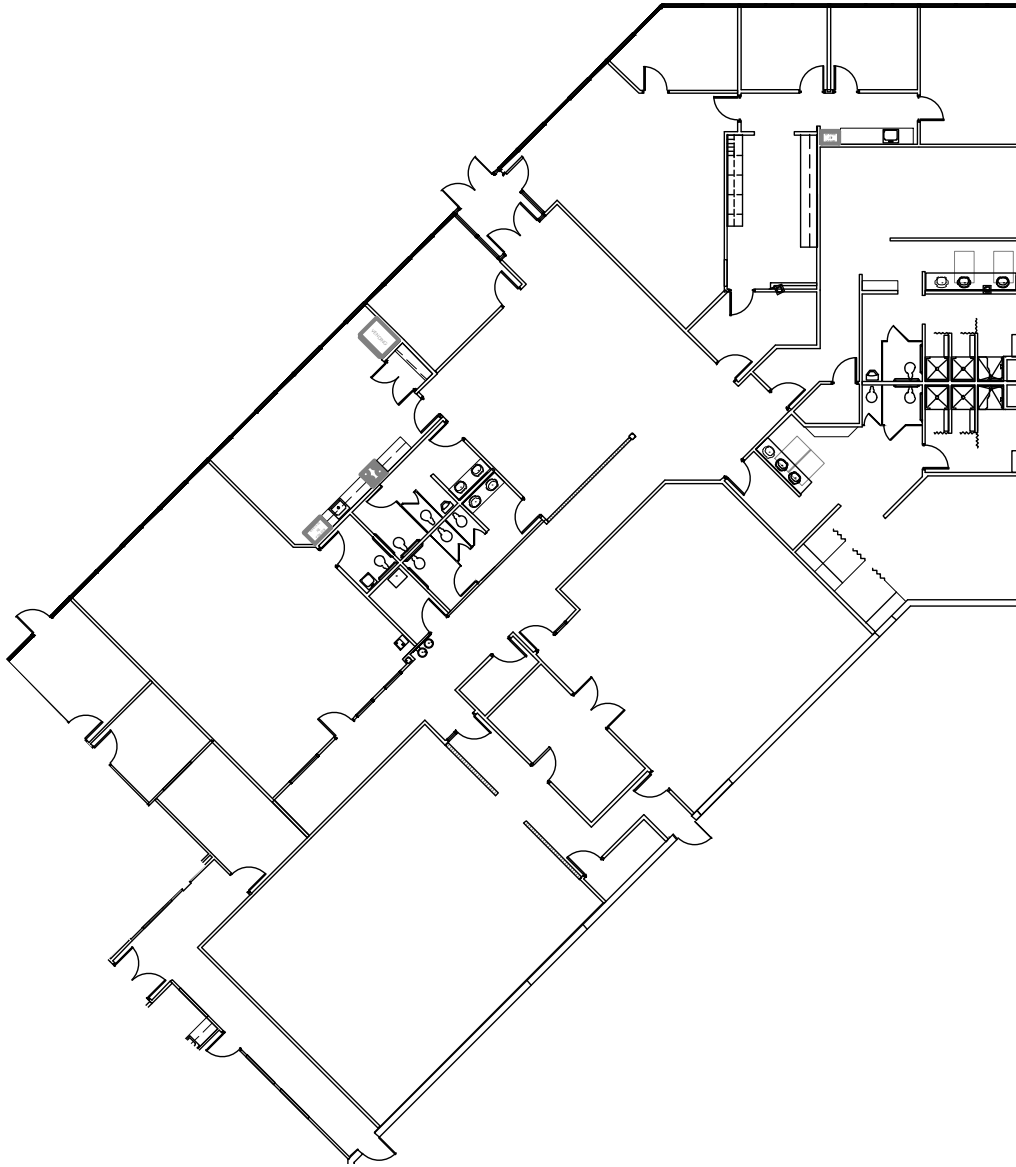
Kevin Archer  
Senior Director  
+1 317 218 7217  
kevin.archer@cushwake.com

Joshua Graham  
Director  
+1 317 639 0491  
joshua.graham@cushwake.com

Jon R. Owens, SIOR  
Managing Director  
+1 317 639 0447  
jon.owens@cushwake.com

# 7102-7195 LAKEVIEW PARKWAY W. DRIVE

## SUITE 7114 - 9,735 SF



- >>> 9,735 SF available (divisible)
- >>> Ability to add multiple drive-in doors
- >>> Office demo underway
- >>> Ability for fully climate controlled warehouse

Owned By

**maple<sup>tree</sup>**

Ed Beehner  
Mapletree Investments  
+1 312 761 9477  
ed.beehner@mapletree.com.sg

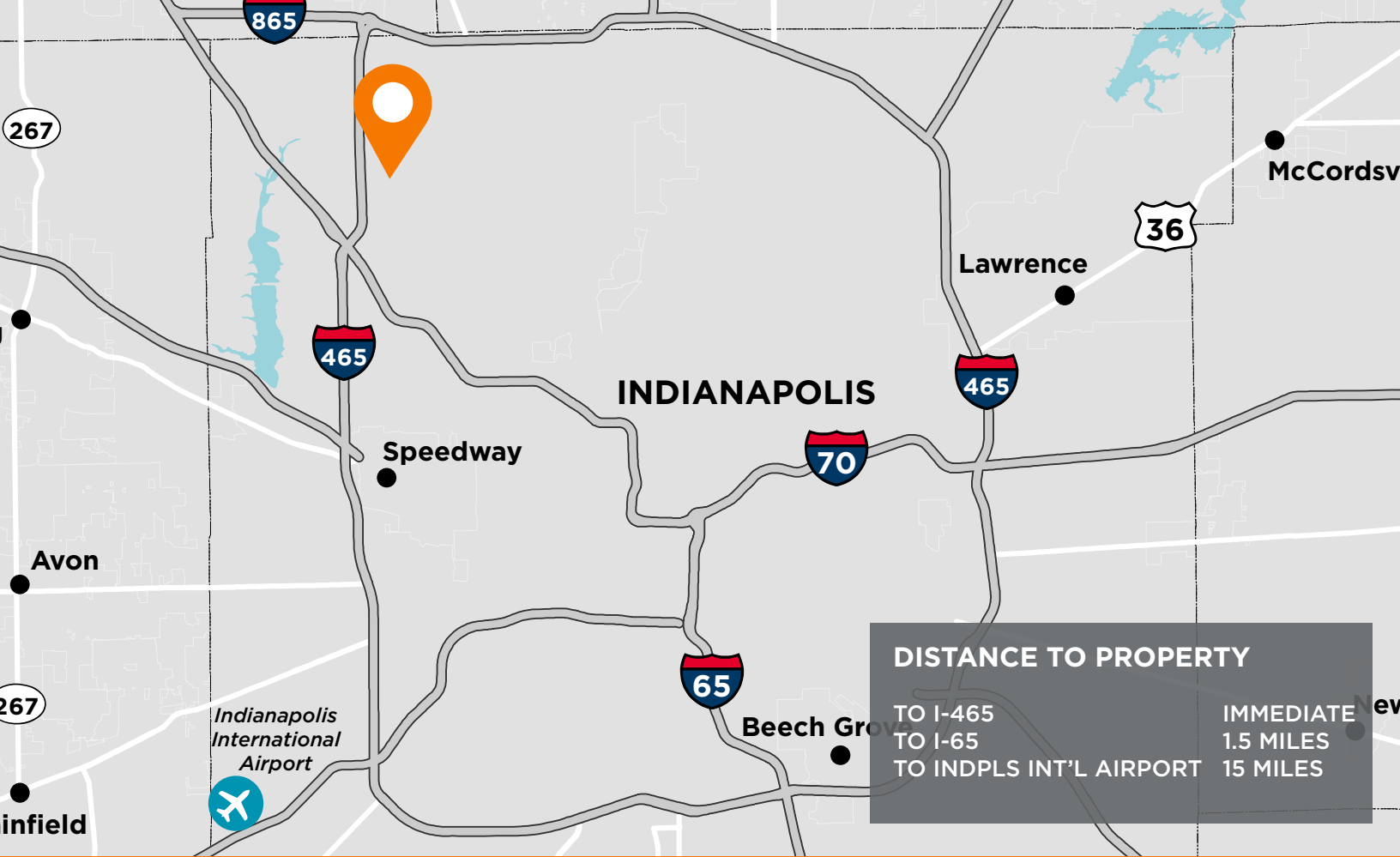
Leased By

 **CUSHMAN & WAKEFIELD**

Kevin Archer  
Senior Director  
+1 317 218 7217  
kevin.archer@cushwake.com

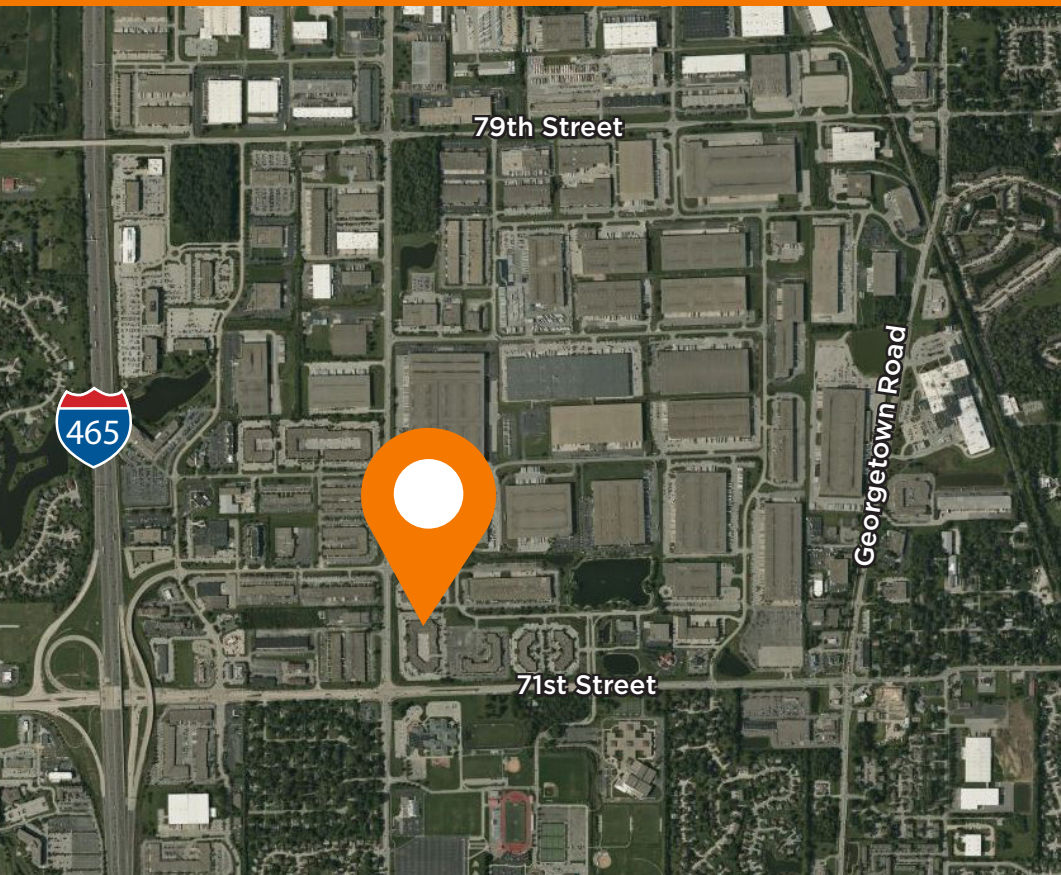
Joshua Graham  
Director  
+1 317 639 0491  
joshua.graham@cushwake.com

Jon R. Owens, SIOR  
Managing Director  
+1 317 639 0447  
jon.owens@cushwake.com



**DISTANCE TO PROPERTY**

TO I-465	IMMEDIATE
TO I-65	1.5 MILES
TO INDPLS INT'L AIRPORT	15 MILES



**Strategic Location**  
 Park 100 provides direct access to central Indiana's highways. Conveniently located on I-465 and minutes from I-65 and Indianapolis International Airport

**About Us**  
 Mapletree is a leading global real estate developer, investor and manager headquartered in Singapore. Mapletree owns and manages more than 70 million square feet of logistics and industrial properties across 26 states with offices in New York, Chicago, Atlanta, Dallas and Los Angeles.  
[www.mapletree.com.sg](http://www.mapletree.com.sg)

Owned By



Ed Beehner  
 Mapletree Investments  
 +1 312 761 9477  
 ed.beehner@mapletree.com.sg

Leased By



Kevin Archer  
 Senior Director  
 +1 317 218 7217  
 kevin.archer@cushwake.com

Joshua Graham  
 Director  
 +1 317 639 0491  
 joshua.graham@cushwake.com

Jon R. Owens, SIOR  
 Managing Director  
 +1 317 639 0447  
 jon.owens@cushwake.com