



# 1900 ENCHANTED WAY

1900 Enchanted Way, Grapevine, TX 76051

AVAILABLE FOR LEASE



## Property Highlights

- Conveniently located off of 121 and 635
- 10 foot ceilings
- Great space condition with existing build out
- High window line
- Expansive surface parking

### JOHN FANCHER

+1 972 663 9690  
john.fancher@cushwake.com

### CYNTHIA COWEN

+1 972 663 9617  
cynthia.cowen@cushwake.com

2021 McKinney Ave., Suite 900 Dallas, Texas • Main +1 972 663 9600 • Fax +1 972 663 9999

[cushmanwakefield.com](http://cushmanwakefield.com)

Cushman & Wakefield Copyright 2020. No warranty or representation, express or implied, is made to the accuracy or completeness of the information contained herein, and same is submitted subject to errors, omissions, change of price, rental or other conditions, withdrawal without notice, and to any special listing conditions imposed by the property owner(s). As applicable, we make no representation as to the condition of the property (or properties) in question.

# 1900 ENCHANTED WAY

1900 Enchanted Way, Grapevine, TX 76051

**AVAILABLE FOR LEASE**



**12 MIN**  
TO DFW AIRPORT

**24 MIN**  
TO LOVE FIELD  
AIRPORT

**25 MIN**  
TO DOWNTOWN  
DALLAS

**28 MIN**  
TO DOWNTOWN  
FT. WORTH

**JOHN FANCHER**  
+1 972 663 9690  
john.fancher@cushwake.com

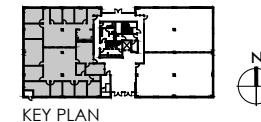
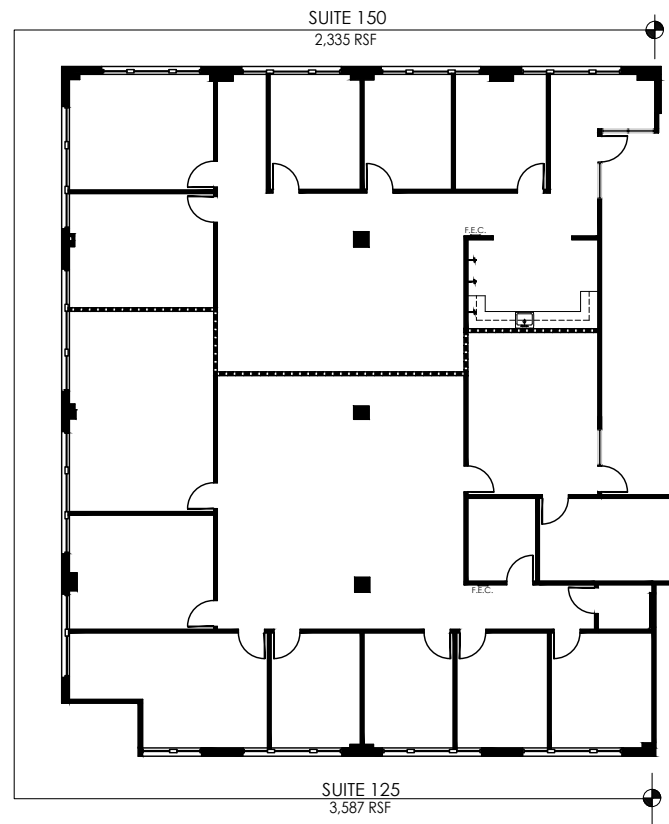
**CYNTHIA COWEN**  
+1 972 663 9617  
cynthia.cowen@cushwake.com

2021 McKinney Ave., Suite 900 Dallas, Texas • Main +1 972 663 9600 • Fax +1 972 663 9999  
[cushmanwakefield.com](http://cushmanwakefield.com)

# 1900 ENCHANTED WAY

1900 Enchanted Way, Grapevine, TX 76051

**SUITE 125 & 150 - 2,335 - 5,922 RSF**



**JOHN FANCHER**  
+1 972 663 9690  
john.fancher@cushwake.com

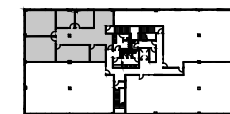
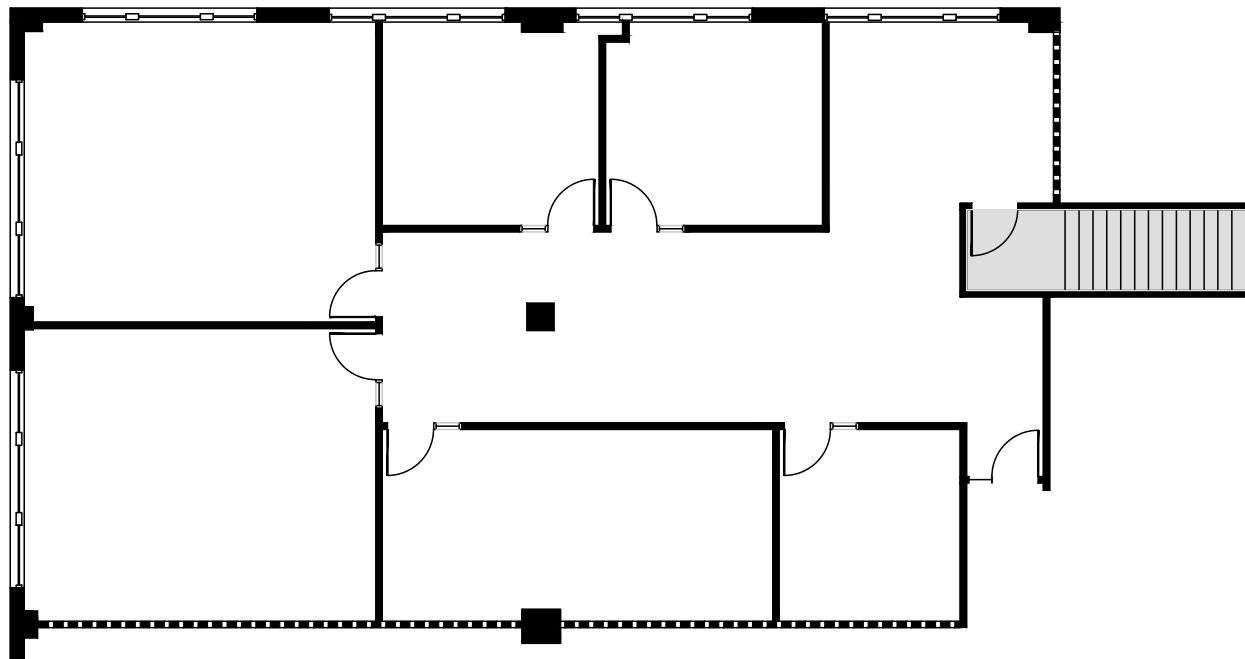
**CYNTHIA COWEN**  
+1 972 663 9617  
cynthia.cowen@cushwake.com

2021 McKinney Ave., Suite 900 Dallas, TX 75201  
Main +1 972 663 9600 | Fax +1 972 663 9999  
[cushmanwakefield.com](http://cushmanwakefield.com)

# 1900 ENCHANTED WAY

1900 Enchanted Way, Grapevine, TX 76051

SUITE 250 - 3,014 RSF



KEY PLAN



**JOHN FANCHER**

+1 972 663 9690

john.fancher@cushwake.com

**CYNTHIA COWEN**

+1 972 663 9617

cynthia.cowen@cushwake.com

2021 McKinney Ave., Suite 900 Dallas, TX 75201

Main +1 972 663 9600 | Fax +1 972 663 9999

[cushmanwakefield.com](http://cushmanwakefield.com)