

680 | FIFTH
AVENUE

*PREMIER
FIFTH
AVENUE
RETAIL
OPPORTUNITY*

*FIFTH AVENUE AND
WEST 54TH STREET*

 CUSHMAN &
WAKEFIELD



Space Specs

<i>Ground Floor</i>	7,600 SF
<i>Lower Level</i>	5,600 SF
<i>2nd Floor</i>	10,100 SF
<i>3rd Floor</i>	10,500 SF
<hr/>	
<i>Total</i>	33,800 SF

Comments

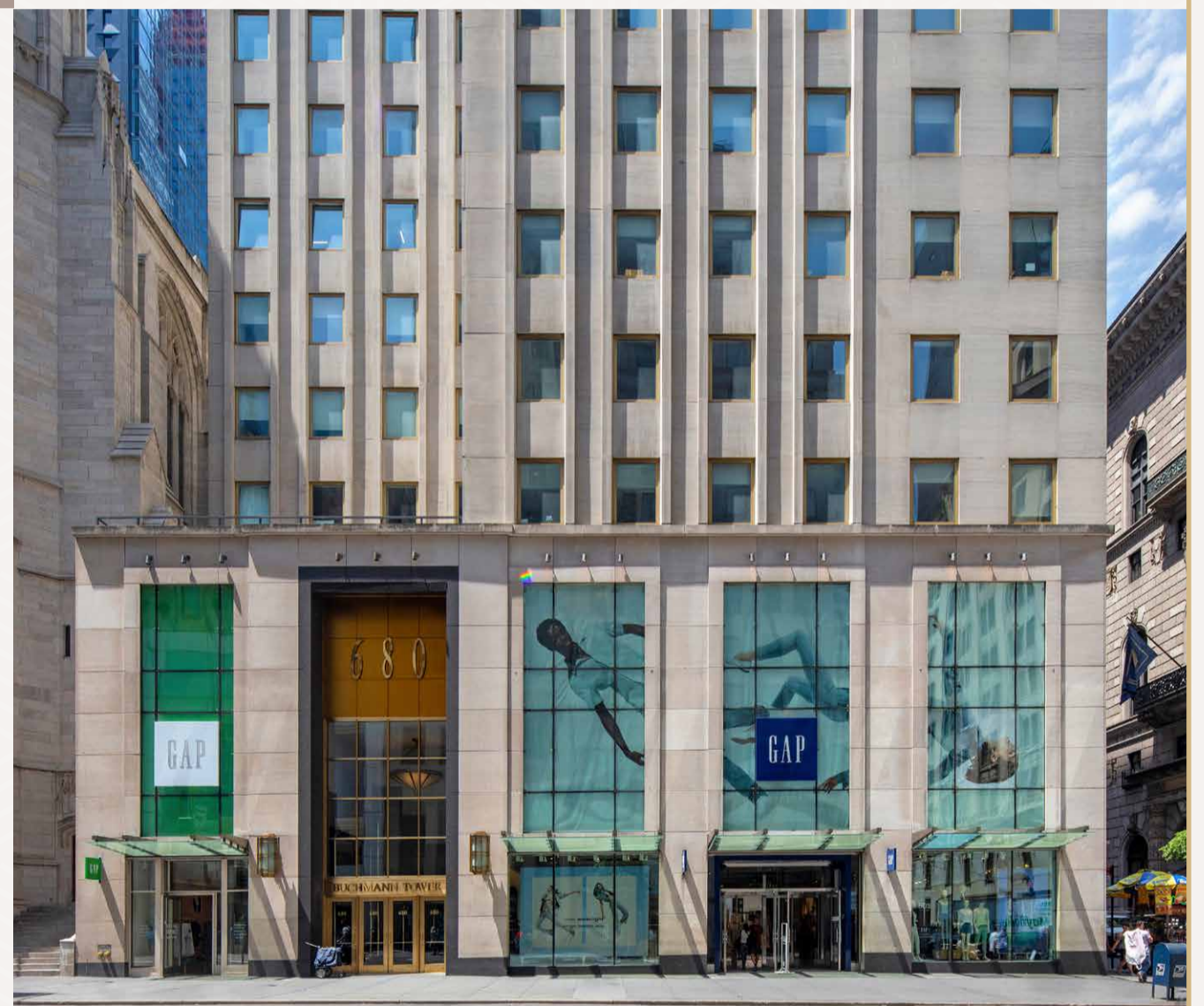
Triple-height signage opportunity.

Located on the southwest corner of West 54th Street, surrounded by St. Thomas Church and the University Club—standing out on a downtown corner in the heart of the world’s best shopping street.

Multiple configurations available.

Jewel-box opportunity farthest south also available.

Existing vertical transportation including escalator in place.



Space Specs

<i>Lease Type</i>	DIRECT
<i>Possession</i>	3/1/19
<i>Frontage</i>	100 FT ON W. 54TH ST; 87 FT ON FIFTH AVENUE

680 | FIFTH AVENUE

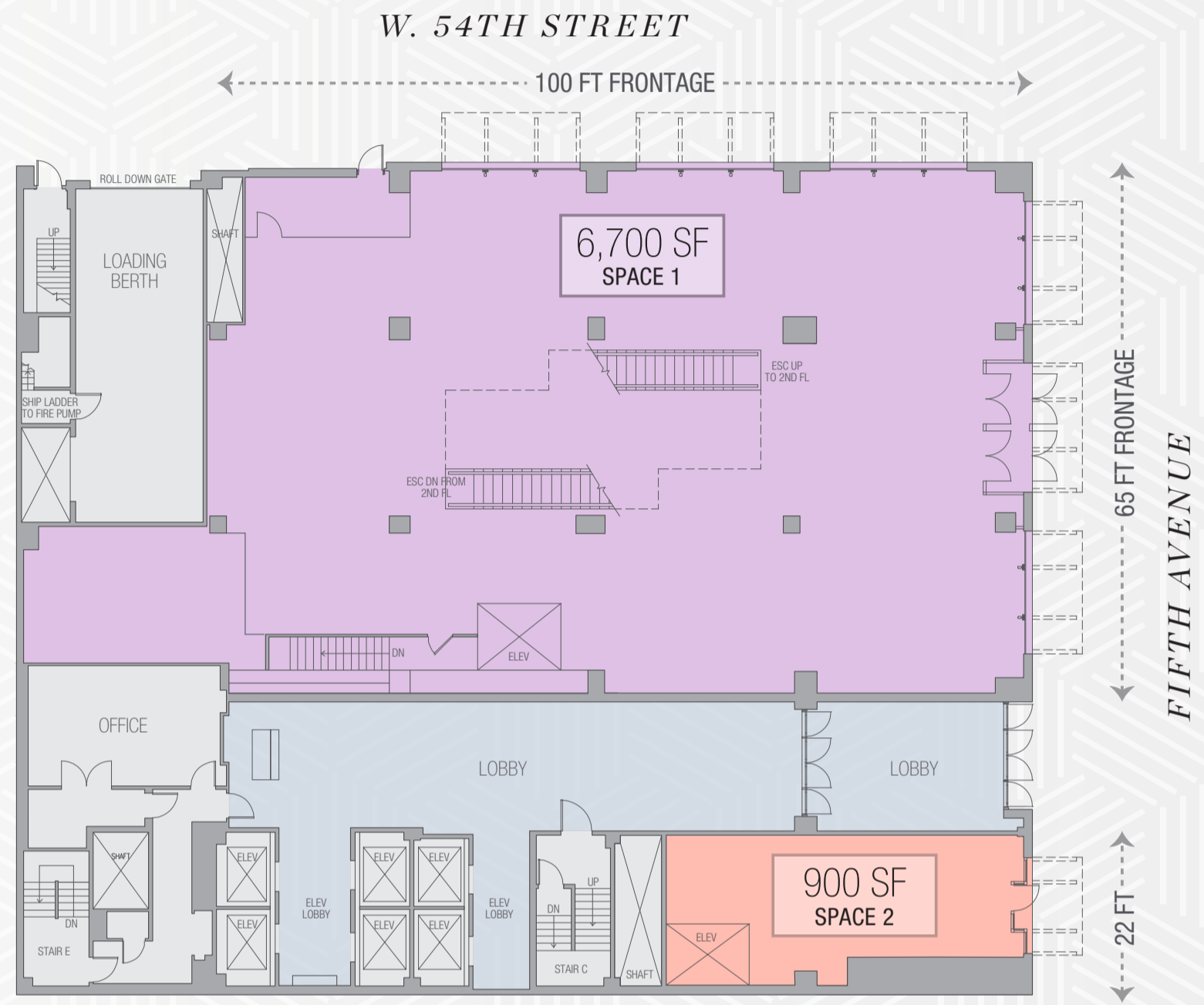
Floorplans

Key

- Retail Area
- Circulation

GROUND FLOOR

SPACE 1: 6,700 SF
SPACE 2: 900 SF



GROUND FLOOR

POSSIBLE DIVISIONS

SPACE 1: 4,300 SF
SPACE 2: 2,400 SF
SPACE 3: 900 SF



680 | FIFTH AVENUE

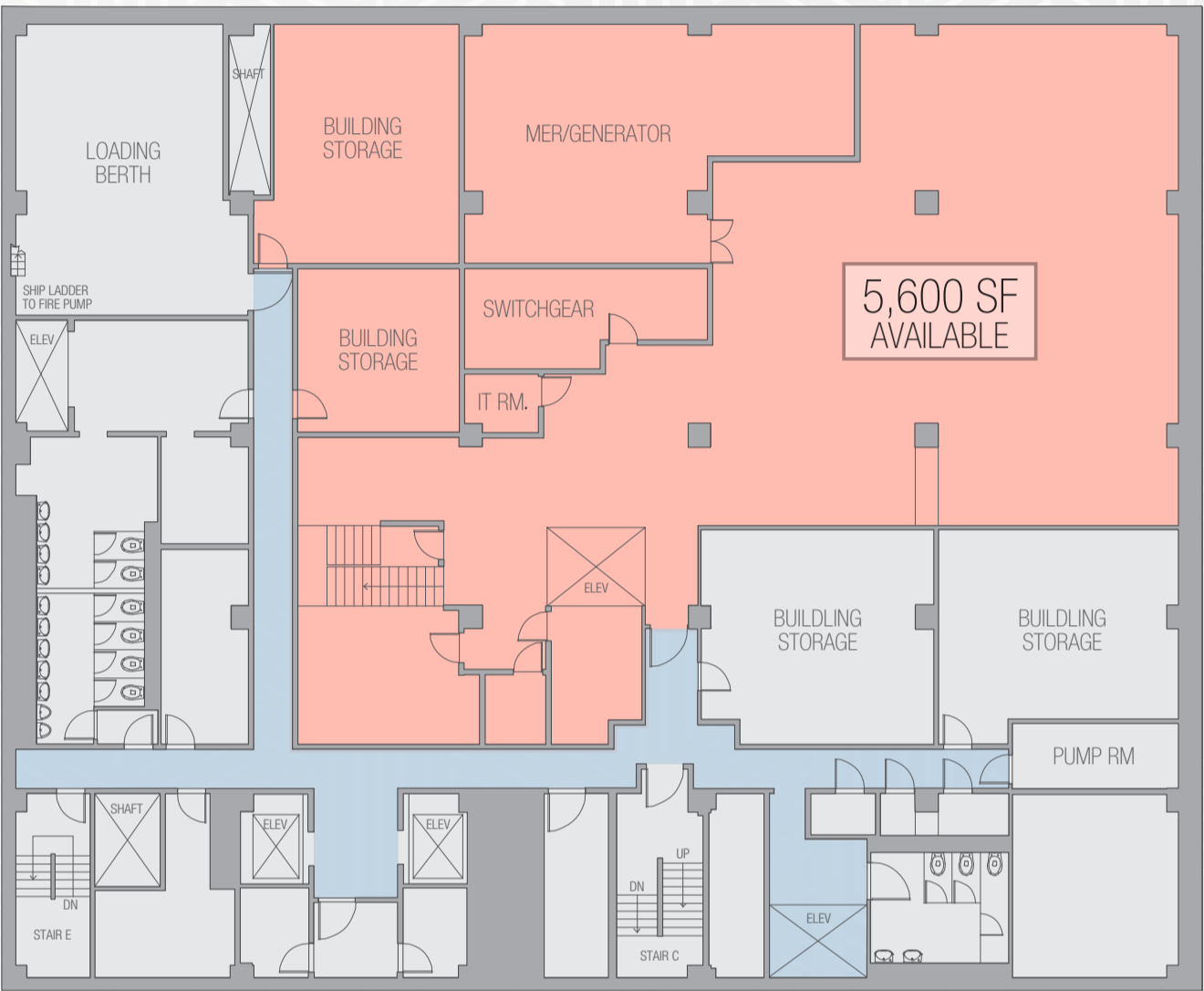
Floorplans

Key

- Retail Area
- Circulation

LOWER LEVEL
5,600 SF

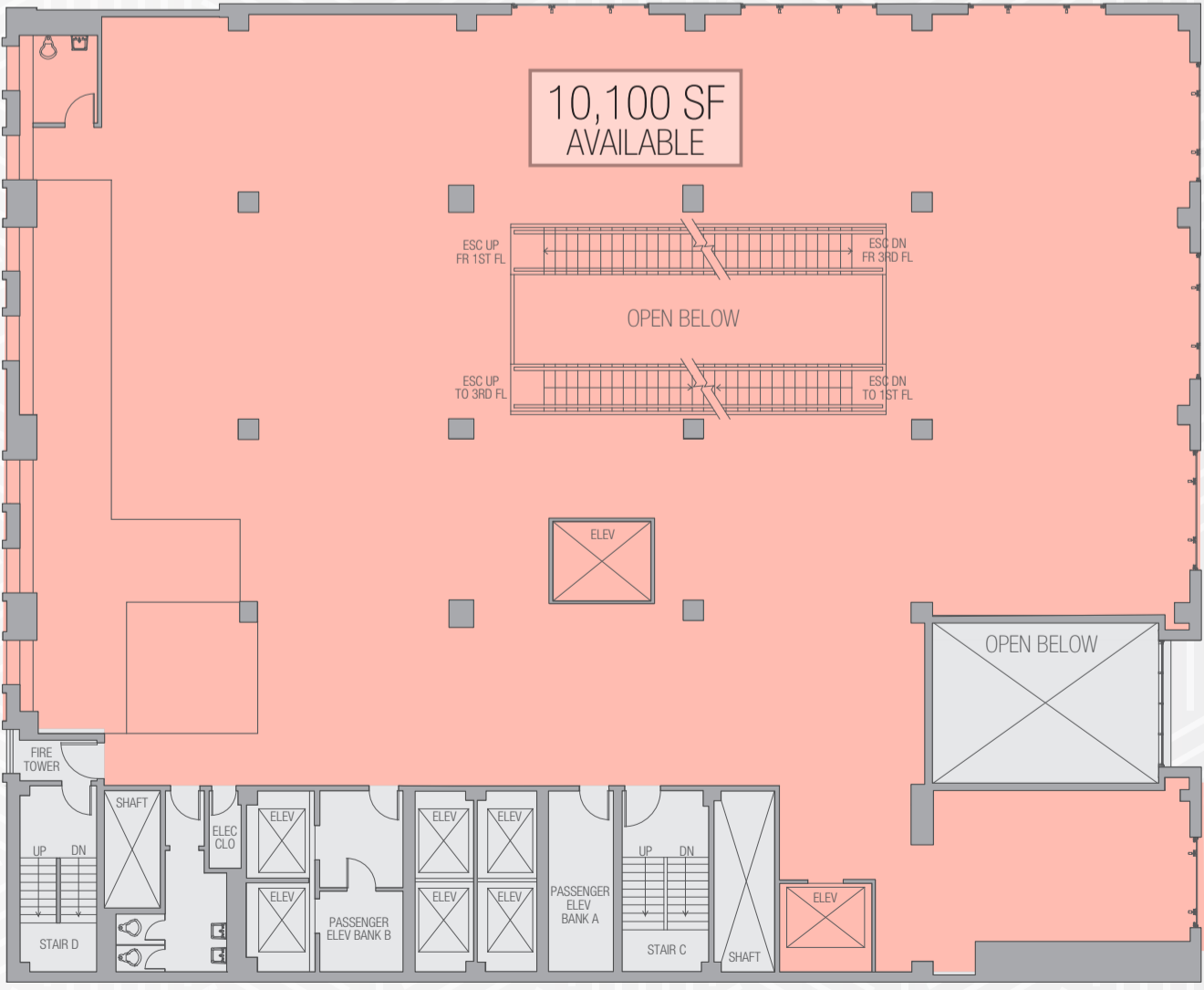
W. 54TH STREET



FIFTH AVENUE

SECOND FLOOR
10,100 SF

W. 54TH STREET



FIFTH AVENUE



680 | FIFTH AVENUE

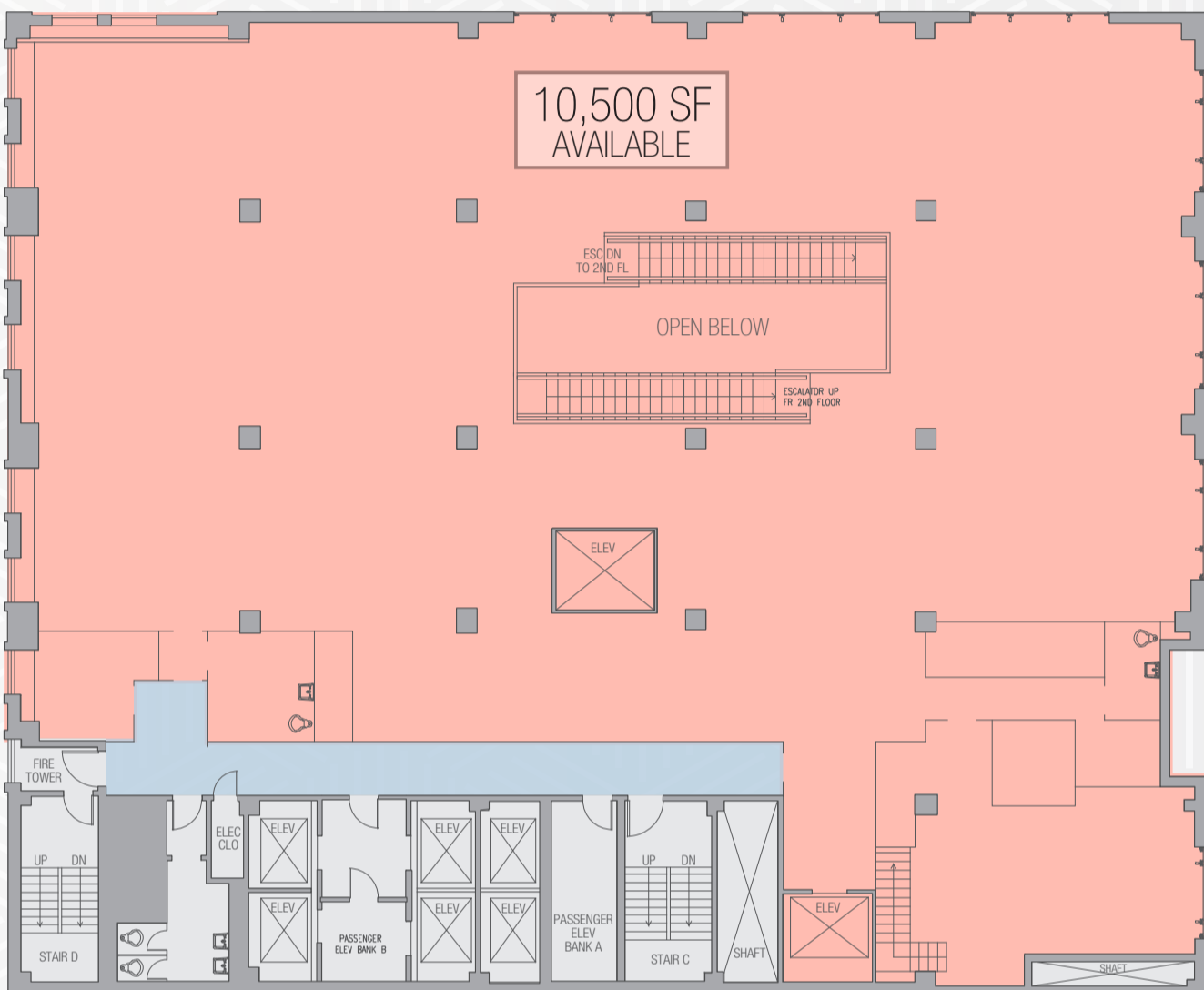
Floorplans

Key

- Retail Area
- Circulation

THIRD FLOOR
10,500 SF

W. 54TH STREET

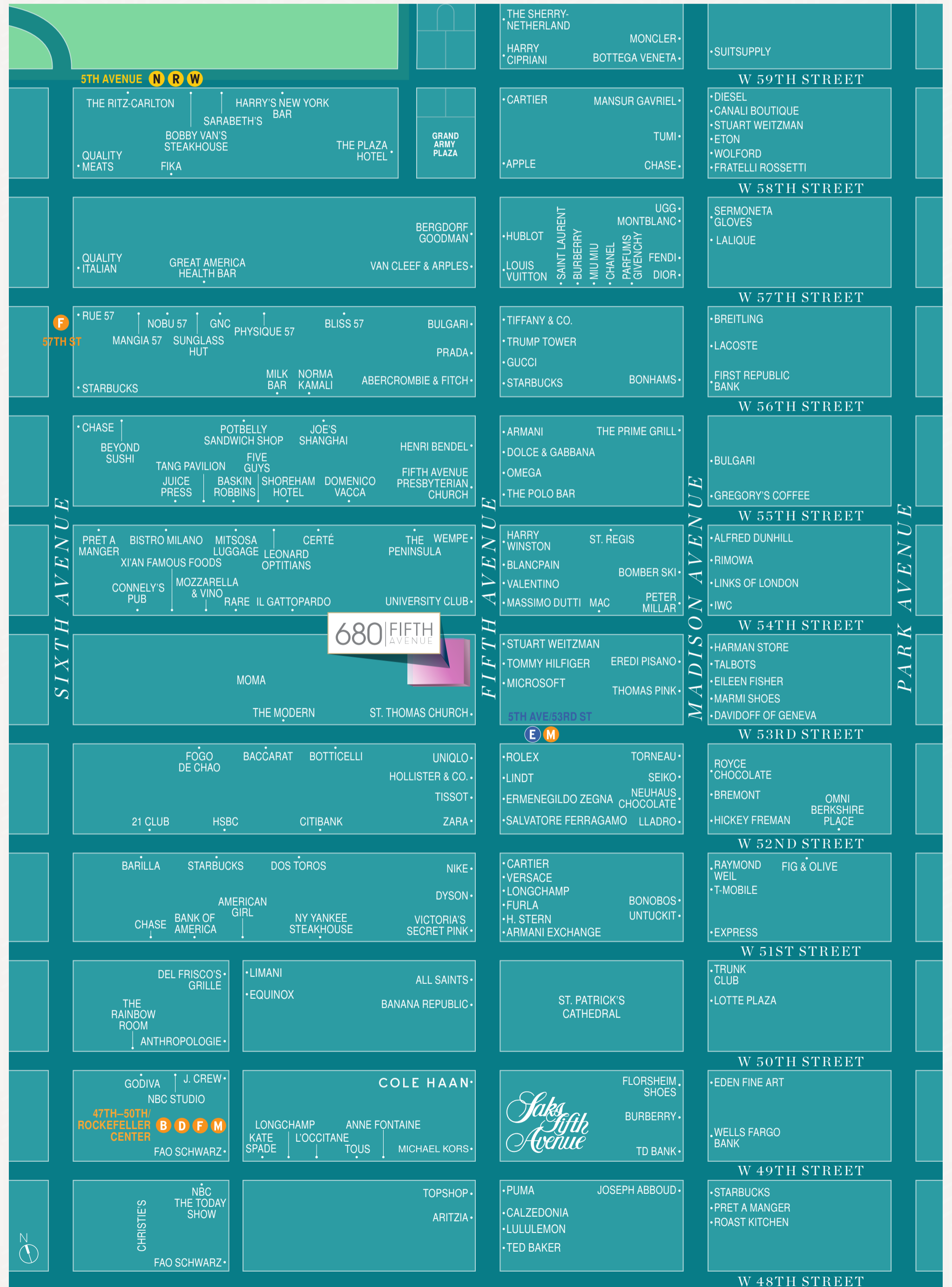


680 | FIFTH AVENUE

Area Map

NEIGHBORING RETAILERS INCLUDE:

- APPLE*
- BERGDORF GOODMAN*
- BULGARI*
- PRADA*
- LOUIS VUITTON*
- TIFFANY & CO.*
- MOMA*
- ERMENEGILDO ZEGNA*
- CARTIER*
- UNIQLO*
- STUART WEITZMAN*
- ROLEX*
- VALENTINO*
- TISSOT*
- LINDT*
- NIKE*
- CARTIER*
- VERSACE*
- LONGCHAMP*
- H. STERN*
- ARMANI EXCHANGE*



680 | FIFTH AVENUE

Please contact us with retail leasing inquiries:

LAURA POMERANTZ

Vice Chairman / Head of Strategic Accounts

+1 212 841 7501

laura.pomerantz@cushwake.com

STEVEN SOUTENDIJK

Executive Managing Director

+1 212 713 6845

steven.soutendijk@cushwake.com

SEAN MORAN

Director

+1 212 841 7668

sean.moran@cushwake.com

MOLLY SANDZA

Senior Associate

+1 212 841 7955

molly.sandza@cushwake.com



**CUSHMAN &
WAKEFIELD**