

# SABAL BUSINESS CENTER V

3922 Coconut Palm Dr., Tampa, FL 33610

21,610 SF AVAILABLE

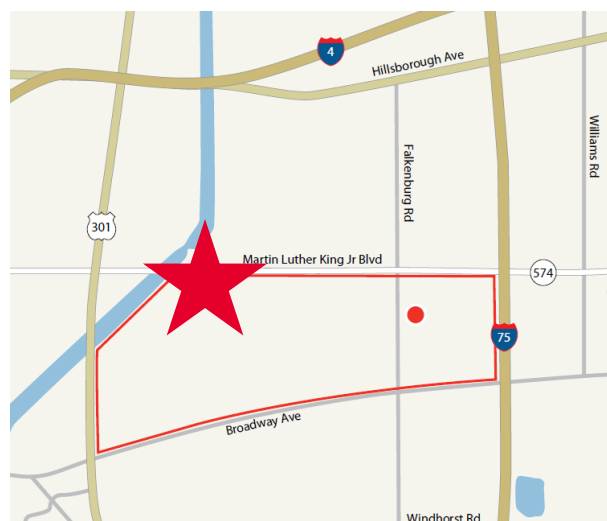


## PROPERTY HIGHLIGHTS

7.00/1,000 – Free Parking

Class A Building

Newly Remodeled Lobby and  
Common Areas



### MERCEDES ANGELL

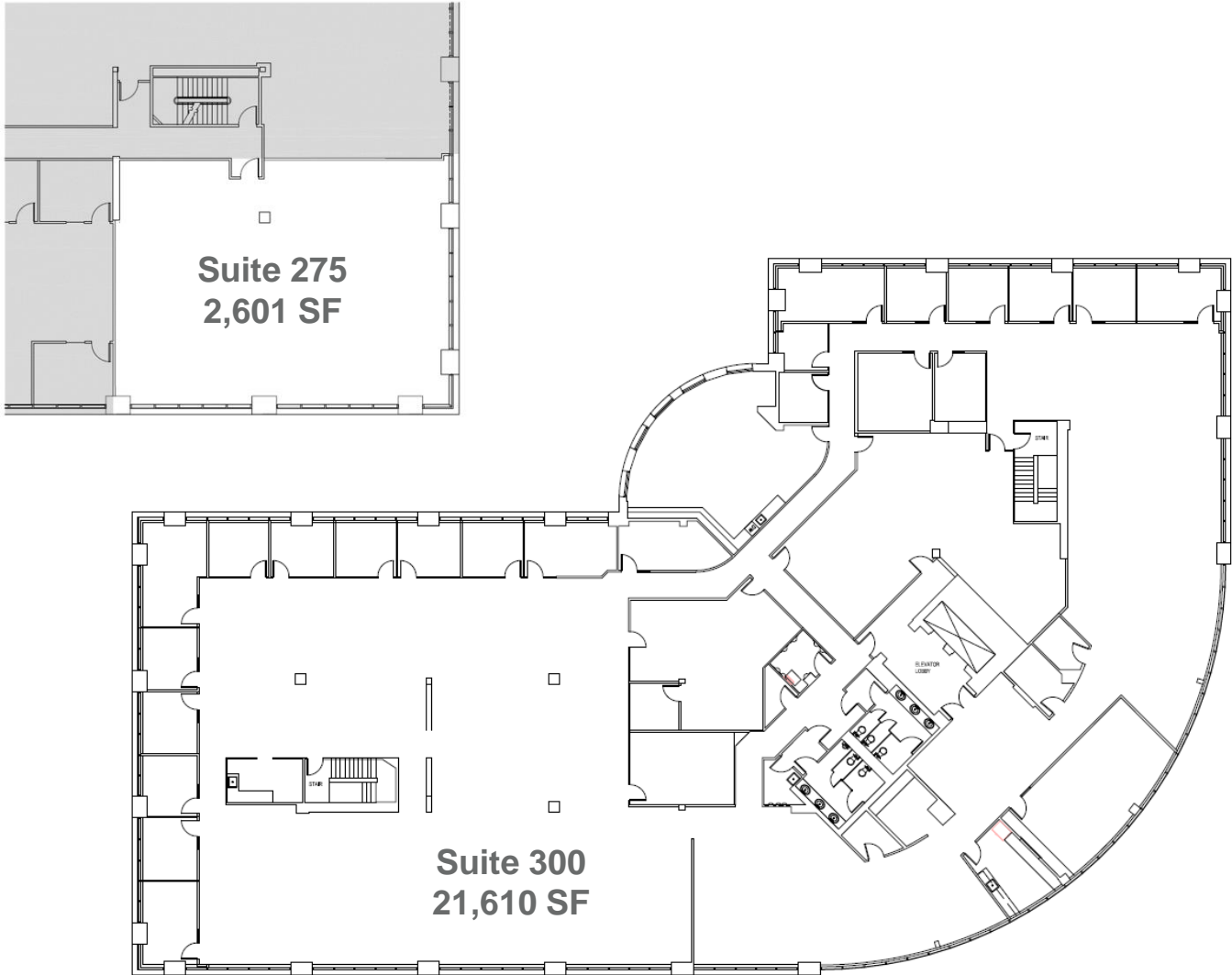
Senior Director  
+1 813 204 5344  
mercedes.angell@cushwake.com

### LAUREN COUP

Director  
+1 813 204 5342  
lauren.coup@cushwake.com

# SABAL BUSINESS CENTER V

3922 Coconut Palm Dr., Tampa, FL 33610



### Building Features

Total Available RSF	24,211 SF
Lease Rate	\$25.00/RSF Full Service
Parking Ratio	7.00 / 1,000 SF

### Suites Total SF Available

Suites	Total SF	Available
275	2,601	Immediately
300	21,610	Immediately