

## **BAYSIDE CENTER I & II**

17755 & 17757 North U.S. Highway 19  
Clearwater, Florida 33764

---

Strategic Location  
in Pinellas County's Bayside Market

---

## **FOR LEASE**

**UP TO  
13,076 SF  
CONTIGUOUS  
SPACE  
AVAILABLE**



# BAYSIDE CENTER I & II

Downtown  
Tampa

Bayside Bridge

5-Story  
Parking  
Garage

BAYSIDE CENTER I & II

## KEY FEATURES

- **Bayside Center I Total Square Footage**  
46,505 SF
- **Bayside Center II Total Square Footage**  
168,762 SF
- **Lease Rate**  
\$24.50 / full service
- **Parking Ratio**  
4:1,000 (free covered parking)

## Prominent location within the Bayside micro-market.

- Excellent visibility from U.S. Highway 19
- Direct access and proximity to a diverse and high-quality labor pool of two million
- Nearby access to Clearwater/St. Petersburg International Airport, Tampa International Airport, major malls, retail & restaurants

19

2

3

# AVAILABILITIES

1,084 - 13,076 SF



Modern Lobby



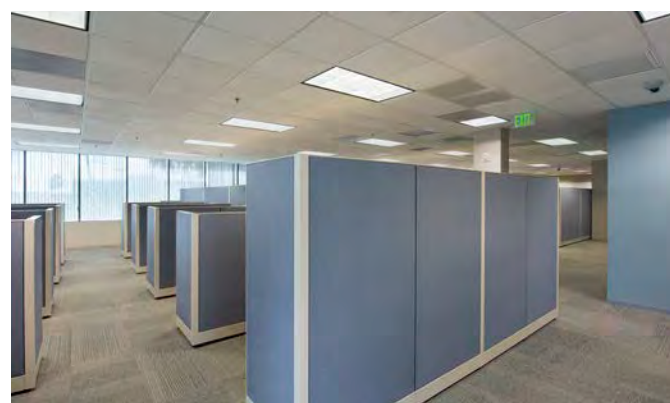
On-Site Property Management



Common Conference Area



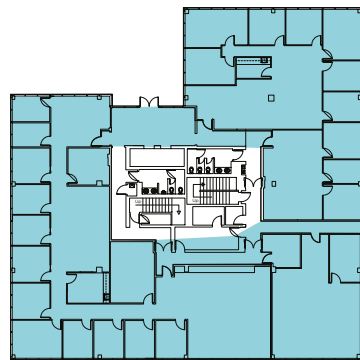
Onsite Cafe



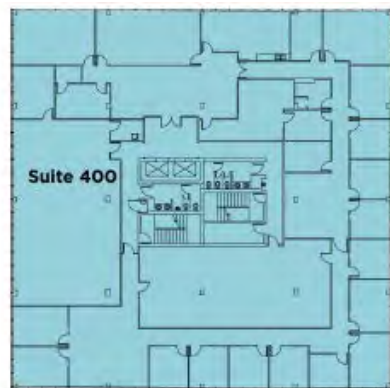
## SUITES

BUILDING	SUITE		TOTAL SF	AVAILABLE
Bayside Center I	200		1,629 SF	Immediately
Bayside Center I	220	*max contiguous 6,924 SF	1,084 SF	Immediately
Bayside Center I	225	*max contiguous 6,924 SF	5,840 SF	Immediately
Bayside Center I	400		12,930 SF	Immediately
Bayside Center II	115	*max contiguous 3,883 SF	1,137 SF	6/1/2021
Bayside Center II	120	*max contiguous 3,883 SF	2,746 SF	Immediately
Bayside Center II	200	*max contiguous 8,896 SF	4,092 SF	Immediately
Bayside Center II	250	*max contiguous 8,896 SF	4,804 SF	Immediately
Bayside Center II	260		2,270 SF	Immediately
Bayside Center II	270	*max contiguous 4,343 SF	1,558 SF	Immediately
Bayside Center II	285	*max contiguous 4,343 SF	2,785 SF	Immediately
Bayside Center II	300	*max contiguous 12,221 SF	4,670 SF	Immediately
Bayside Center II	310	*max contiguous 12,221 SF	5,685 SF	Immediately
Bayside Center II	325	*max contiguous 12,221 SF	1,866 SF	9/1/2021
Bayside Center II	500		13,076 SF	Immediately

Bayside Center I - Floor 2



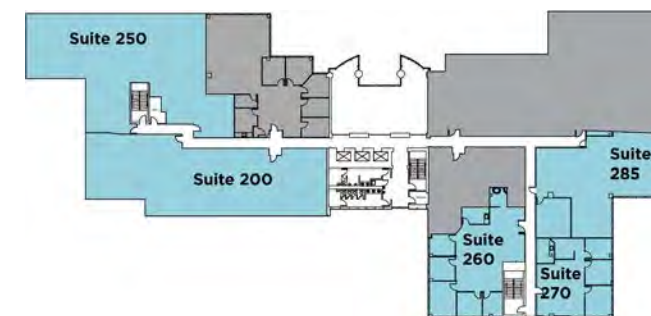
Bayside Center I - Floor 4



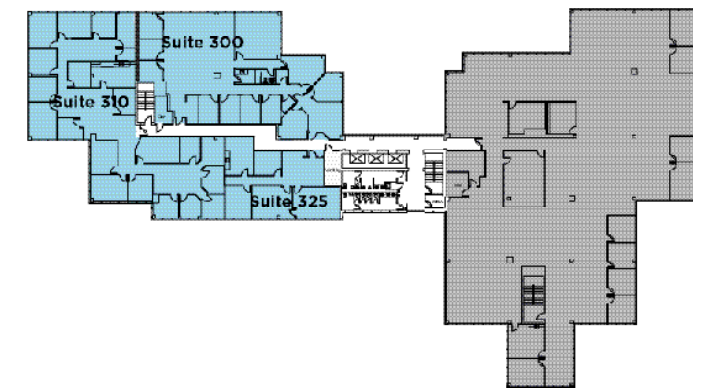
Bayside Center II - Floor 1



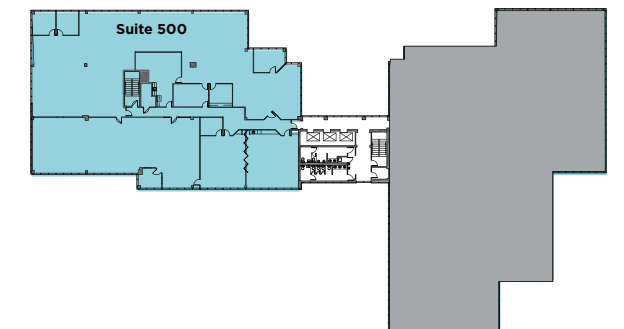
Bayside Center II - Floor 2

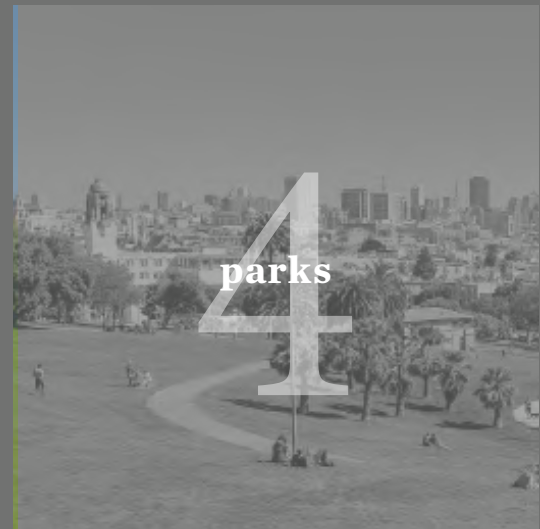
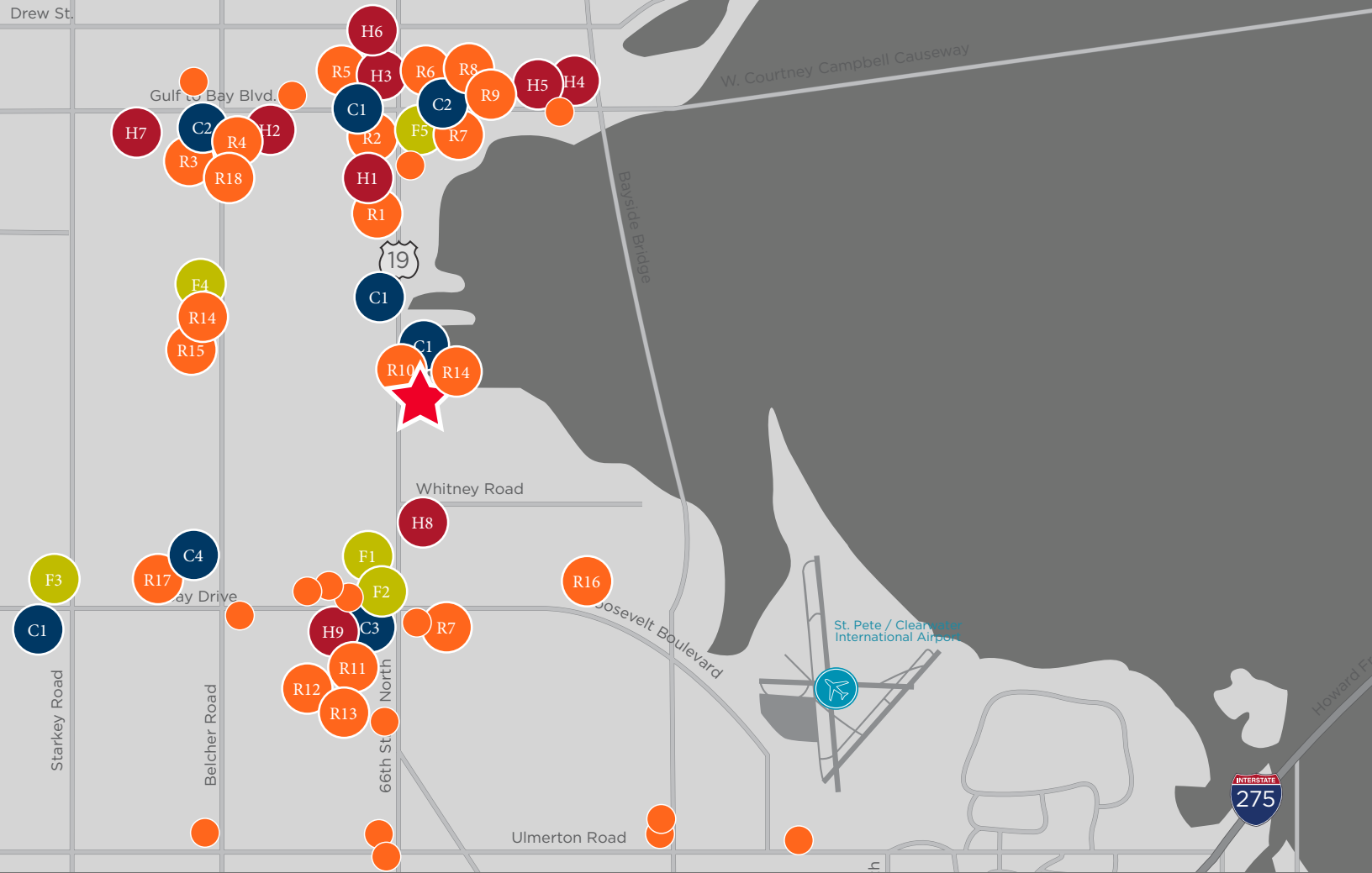


Bayside Center II - Floor 3



Bayside Center II - Floor 5





## AMENITIES

- |                             |                          |  |
|-----------------------------|--------------------------|--|
| ● Restaurants               | ● Coffee Shops           | ● Hotels   |
| R1 Applebees                | C1 Dunkin Donuts         | H1 Quality Inn Central                           |
| R2 Village Inn              | C2 Starbucks             | H2 Gulf Way Inn                                  |
| R3 Bob Evans                | C3 Einstein Bros. Bagels | H3 Holiday Inn Express                           |
| R4 Little Greek Fresh Grill | C4 The Haus Coffee Shop  | H4 Fairfield Inn & Suites by Marriott Clearwater |
| R5 Chick-fil-a              |                          | H5 Clearwater Inn                                |
| R6 Chipotle Mexican Grill   | ● Fitness & Health       | H6 Knights Inn Clearwater                        |
| R7 Moe's Southwest Grill    | F1 LA Fitness            | H7 Ramada Limited Clearwater Hotel               |
| R8 Carrabba's Italian Grill | F2 Anytime Fitness       | H8 Rodeway Inn                                   |
| R9 Hooters                  | F3 Gold's Gym            | H9 Woodspring Suites Signature Clearwater        |
| R10 Steak 'n Shake          | F4 Curves                |  |
| R11 Chili's                 | F5 9Round Fitness        |  |
| R12 LongHorn Steakhouse     |                          |  |
| R13 First Watch             |                          |  |
| R14 Subway                  |                          |  |
| R15 Monty's Pizza           |                          |  |
| R16 Wung Thai               |                          |  |
| R17 Culver's                |                          |  |
| R18 PDQ                     |                          |  |



...within a 3-mile radius



**CUSHMAN &  
WAKEFIELD**

MERCEDES ANGELL  
Senior Director  
+1 813 204 5344  
mercedes.angell@cushwake.com

MELANIE JACKSON  
Director  
+1 727 776 2780  
melanie.jackson@cushwake.com

[cushmanwakefield.com](http://cushmanwakefield.com)

## **BAYSIDE CENTER I & II**

17755 & 17757 North U.S. Highway 19  
Clearwater, Florida 33764

