

FOR LEASE

HIGH POINTE PROFESSIONAL PLAZA BUILDING III

7927 South High Point Parkway / Sandy, UT 84094



**FULLY FURNISHED
FLEXIBLE LEASE TERM**

PROPERTY HIGHLIGHTS

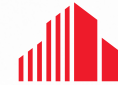
- **Lease Rate: \$18.50 PSF, Full Service**
- 4,500 RSF to 15,000 RSF
- First Floor 9,740 RSF can be demised
- Second Floor 11,292 RSF can be demised
- Use of existing furniture and cubicles included in lease rate
- On-site amenities include: Fitness center, cardio room, showers, common conference rooms, training center, tenant lounge, parking garage and kitchen area.
- 4/1000 parking ratio
- covered parking structure
- Within walking distance to Highpoint Shopping Center - restaurants, shopping and VASA Fitness



FOR LEASE

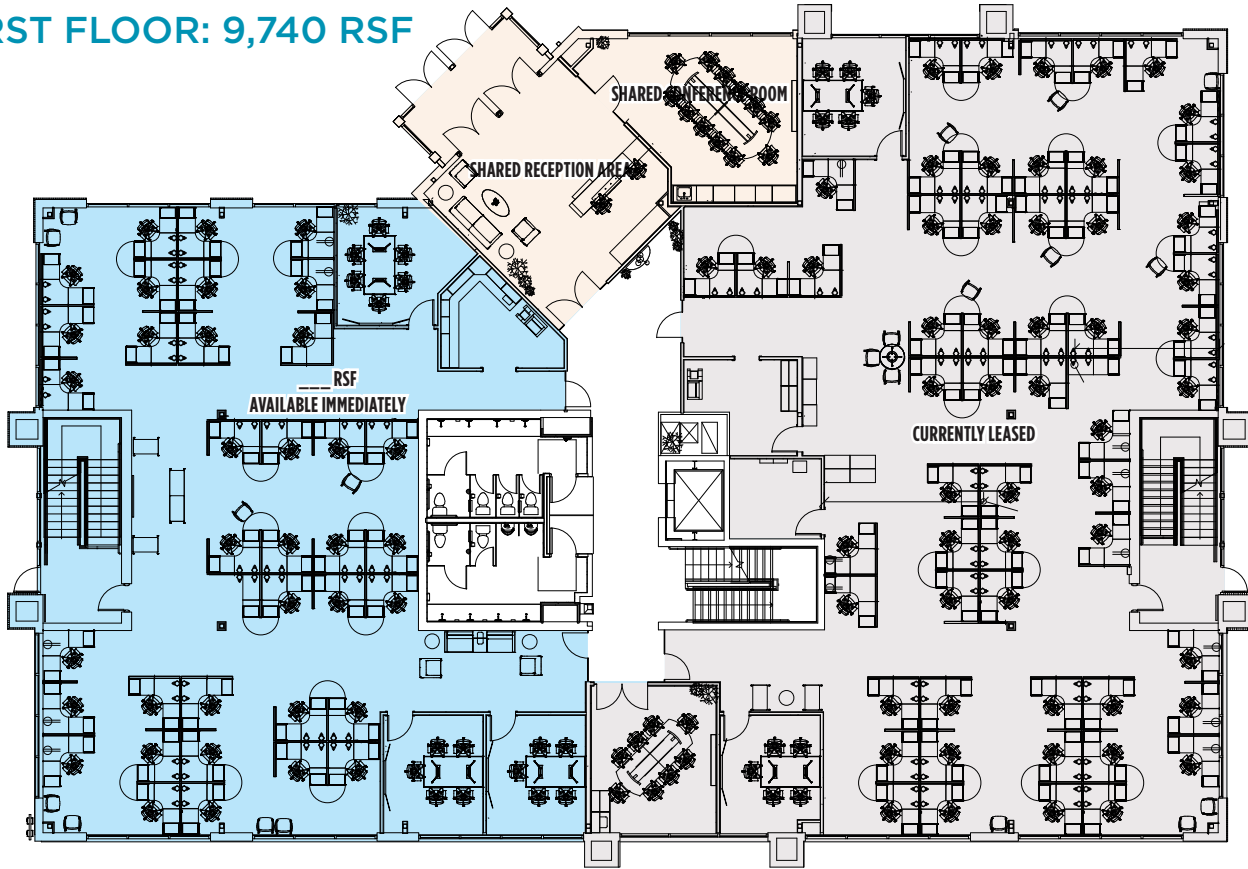
HIGH POINTE PROFESSIONAL PLAZA BUILDING III

7927 South High Point Parkway / Sandy, UT 84094

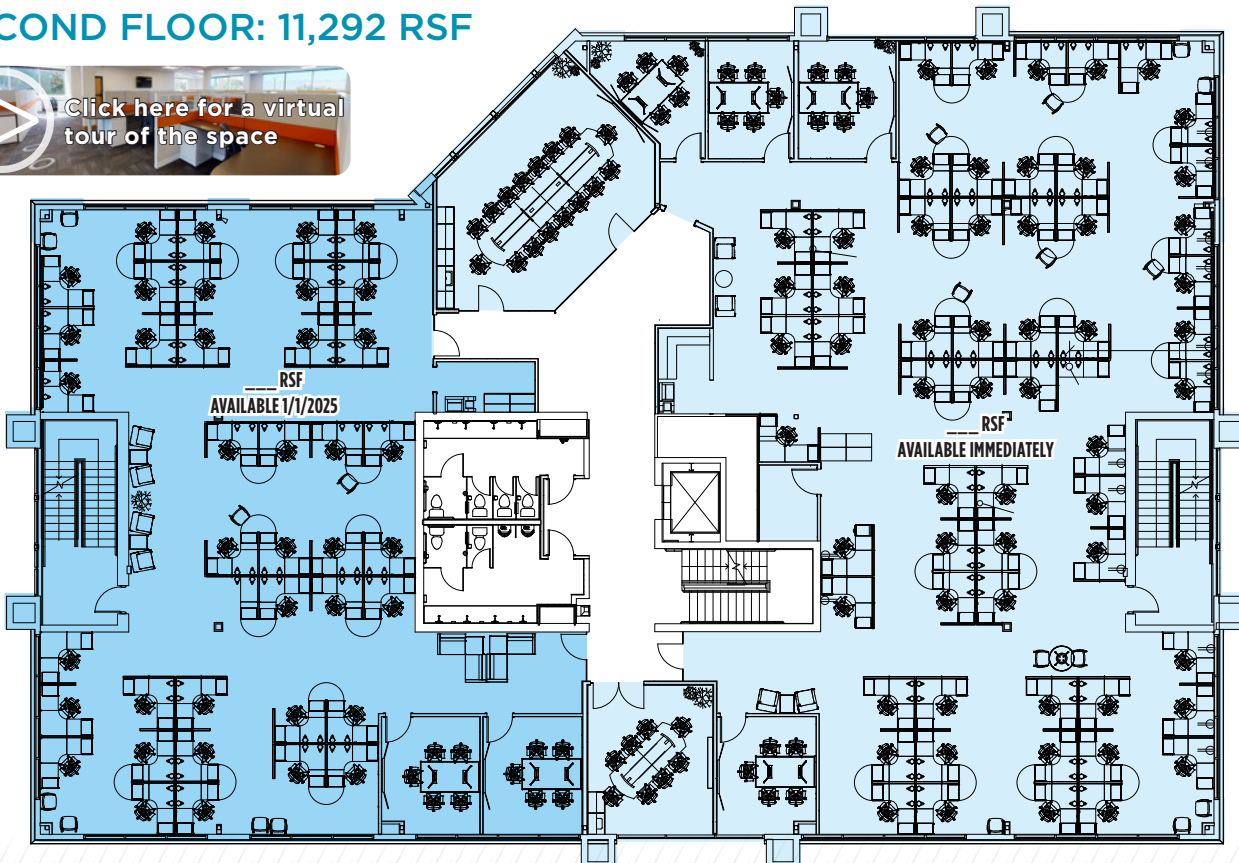


CUSHMAN &
WAKEFIELD

FIRST FLOOR: 9,740 RSF



SECOND FLOOR: 11,292 RSF



FOR LEASE

HIGH POINTE PROFESSIONAL PLAZA BUILDING III

7927 South High Point Parkway / Sandy, UT 84094



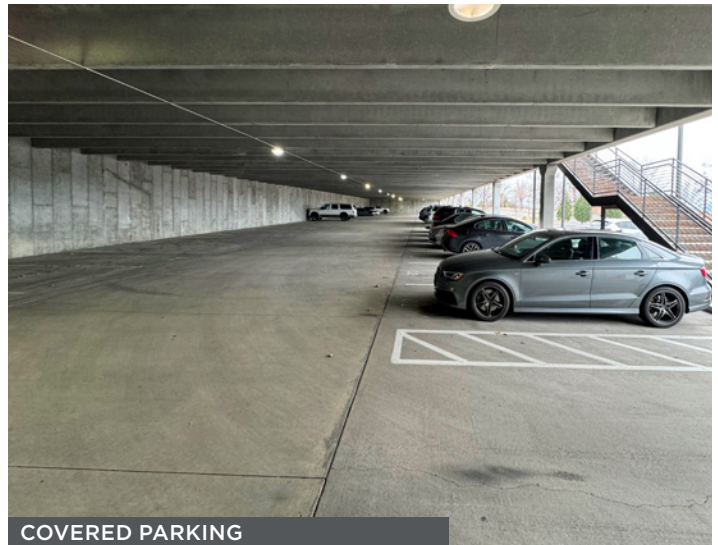
SHARED CONFERENCE ROOM



SHARED LOBBY & CONFERENCE ROOM



SECURED ENTRY AREA



COVERED PARKING



TENANT LOUNGE AREA



TENANT LOUNGE AREA

FOR LEASE

HIGH POINTE PROFESSIONAL PLAZA BUILDING III

7927 South High Point Parkway / Sandy, UT 84094



BUILDING TRAINING ROOM



BUILDING KITCHEN & BREAK ROOM



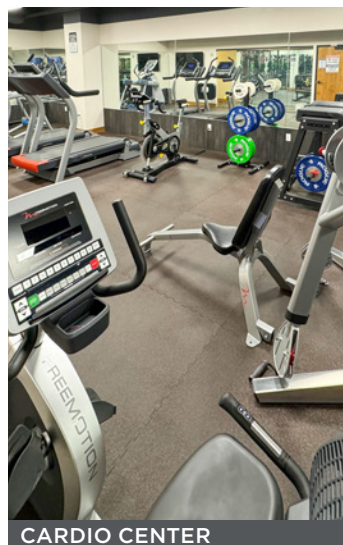
BUILDING KITCHEN & BREAK ROOM



FITNESS CENTER



FITNESS CENTER



CARDIO CENTER

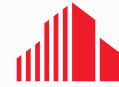


LOCKER ROOM SHOWER

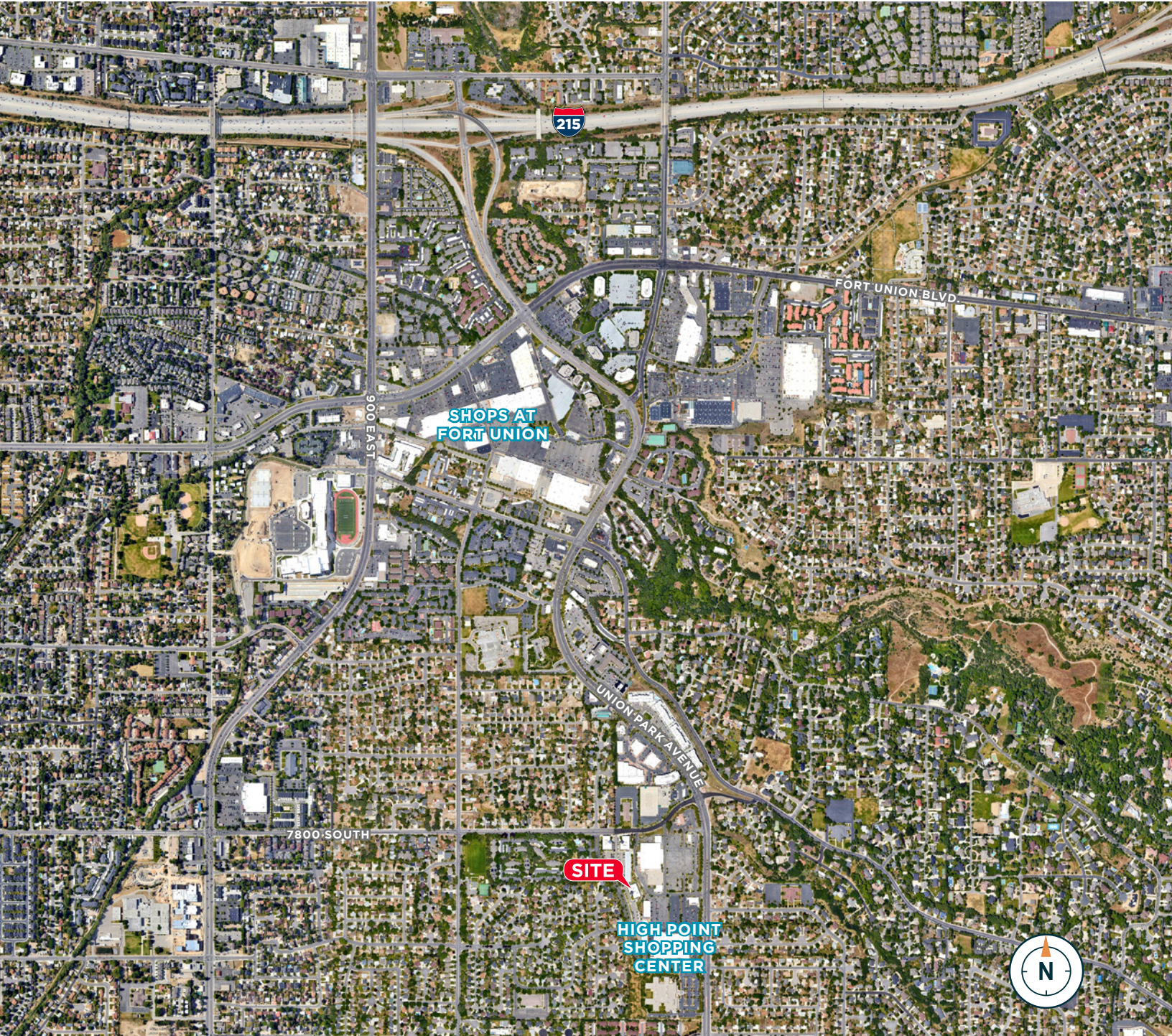
FOR LEASE

HIGH POINTE PROFESSIONAL PLAZA BUILDING III

7927 South High Point Parkway / Sandy, UT 84094



CUSHMAN &
WAKEFIELD



Contact

MIKE RICHMOND

Executive Managing Director

+1 801 303 5434

mike.richmond@cushwake.com

DANA BAIRD, CCIM

Executive Managing Director

+1 801 303 5526

dana.baird@cushwake.com

170 South Main Street, Suite 1600

Salt Lake City, UT 84101

+1 801 322 2000

cushmanwakefield.com