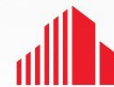


**FOR LEASE**

# Arlington Square

3250-3300 Washtenaw Avenue

Ann Arbor, Michigan 48104



**CUSHMAN &  
WAKEFIELD**



## 790 SF Suite Available For Lease

- 2<sup>nd</sup> floor office
- Across the street from abundant retail including Arborland Center, Whole Foods, Barnes & Noble, Qdoba and many more
- 65 parking spaces; underground parking available
- High visibility/traffic at the corner of Washtenaw Avenue and Huron Parkway
- Immediate proximity to US-23

**Lease Rate: \$17.50/SF + utilities**

### Contact

**Kyle Passage**  
Senior Associate  
+1 248 358 6113  
kyle.passage@cushwake.com

**Tony Awendt**  
Managing Director  
+1 248 358 6115  
tony.awendt@cushwake.com

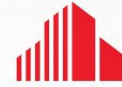


27777 Franklin Road, Suite 1050  
Southfield, Michigan 48034  
Main +1 248 358 6100  
cushmanwakefield.com

**FOR LEASE**

# Arlington Square

3250-3300 Washtenaw Avenue  
Ann Arbor, Michigan 48104

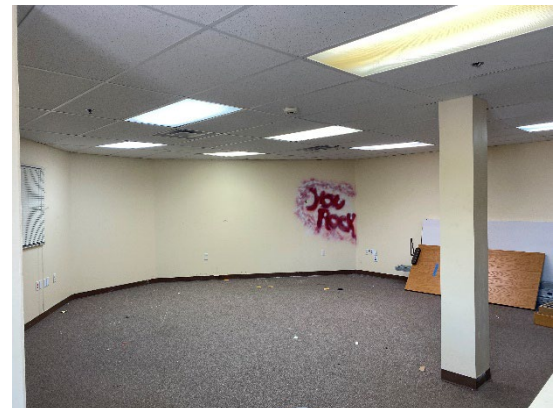
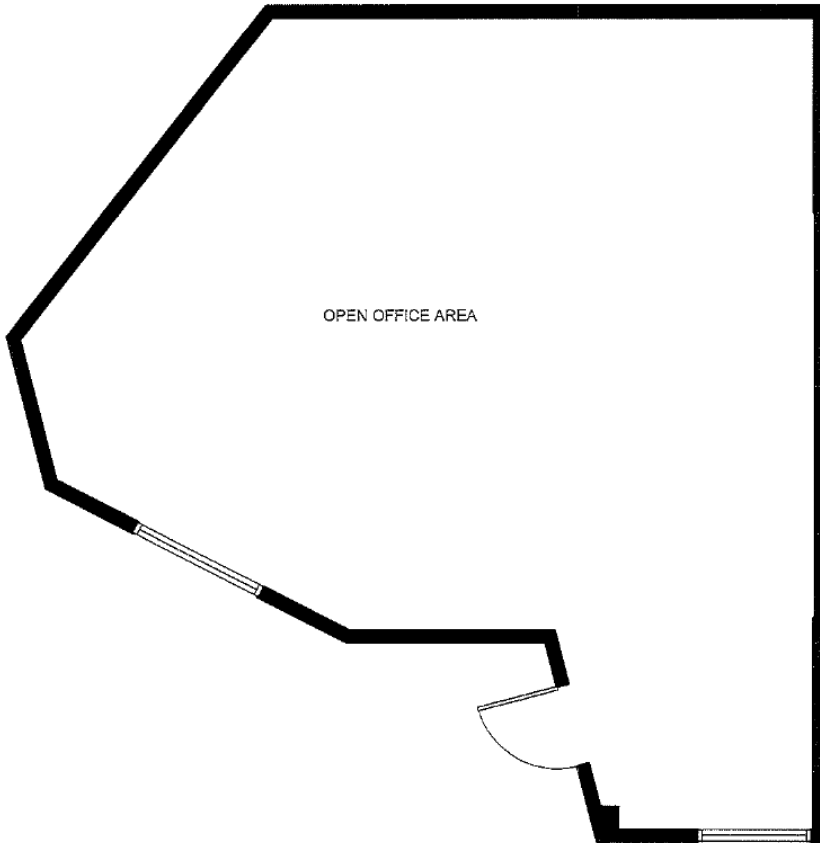


**CUSHMAN &  
WAKEFIELD**

**Suite 295**

**790 SF**

**\$16.50/SF Plus Gas and Electric**



## Contact

**Kyle Passage**  
Senior Associate  
+1 248 358 6113  
kyle.passage@cushwake.com

**Tony Avendt**  
Managing Director  
+1 248 358 6115  
tony.avendt@cushwake.com

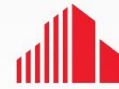
27777 Franklin Road, Suite 1050  
Southfield, Michigan 48034  
Main +1 248 358 6100  
cushmanwakefield.com

**FOR LEASE**

# Arlington Square

3250-3300 Washtenaw Avenue

Ann Arbor, Michigan 48104



**CUSHMAN &  
WAKEFIELD**



**Property lines are approximate**

## Contact

**Kyle Passage**

Senior Associate

+1 248 358 6113

[kyle.passage@cushwake.com](mailto:kyle.passage@cushwake.com)

**Tony Avedt**

Managing Director

+1 248 358 6115

[tony.avendt@cushwake.com](mailto:tony.avendt@cushwake.com)

27777 Franklin Road, Suite 1050

Southfield, Michigan 48034

Main +1 248 358 6100

[cushmanwakefield.com](http://cushmanwakefield.com)