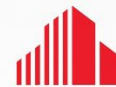


**FOR LEASE**

## Arlington Square

3250-3300 Washtenaw Avenue

Ann Arbor, Michigan 48104



**CUSHMAN &  
WAKEFIELD**



### Multiple Office Suites Available For Lease

- 2<sup>nd</sup> floor offices
- Across the street from abundant retail including Arborland Center, Whole Foods, Barnes & Noble, Qdoba and many more
- 65 parking spaces; underground parking available
- High visibility/traffic at the corner of Washtenaw Avenue and Huron Parkway
- Immediate proximity to US-23

**Lease Rate: \$17.50/SF + Utilities**

### Contact

**Kyle Passage**  
Senior Associate  
+1 248 358 6113  
kyle.passage@cushwake.com

**Tony Awendt**  
Executive Director  
+1 248 358 6115  
tony.awendt@cushwake.com



27777 Franklin Road, Suite 1050  
Southfield, Michigan 48034  
Main +1 248 358 6100  
cushmanwakefield.com

**FOR LEASE**

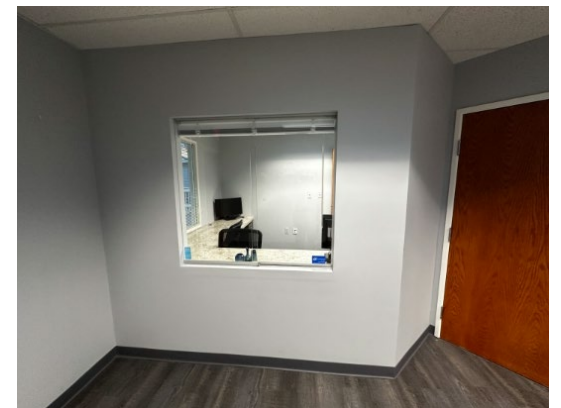
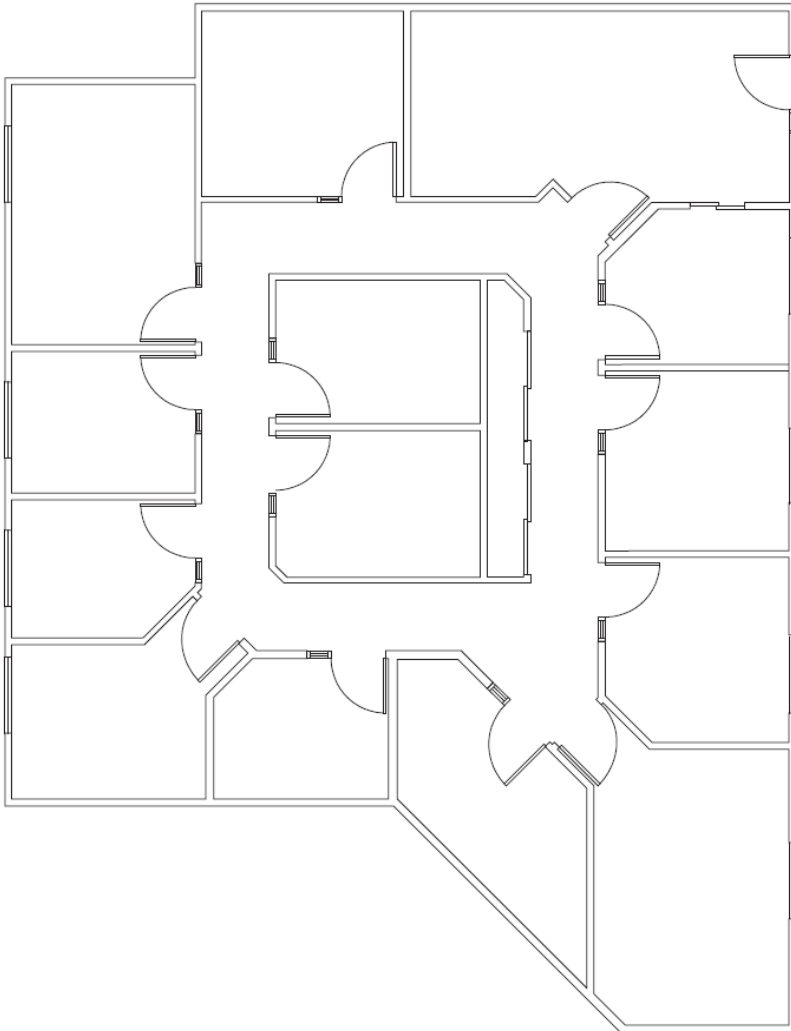
# Arlington Square

3250-3300 Washtenaw Avenue

Ann Arbor, Michigan 48104



**Suite 265**  
**2,228 RSF**  
**\$17.50/SF + Utilities**



## Contact

**Kyle Passage**  
Senior Associate  
+1 248 358 6113  
kyle.passage@cushwake.com

**Tony Avendt**  
Executive Director  
+1 248 358 6115  
tony.avendt@cushwake.com

27777 Franklin Road, Suite 1050  
Southfield, Michigan 48034  
Main +1 248 358 6100  
cushmanwakefield.com

**FOR LEASE**

# Arlington Square

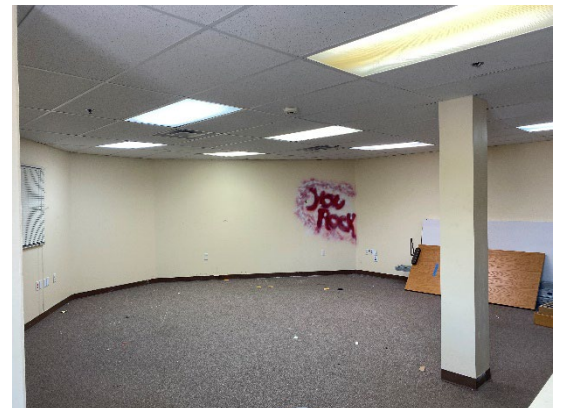
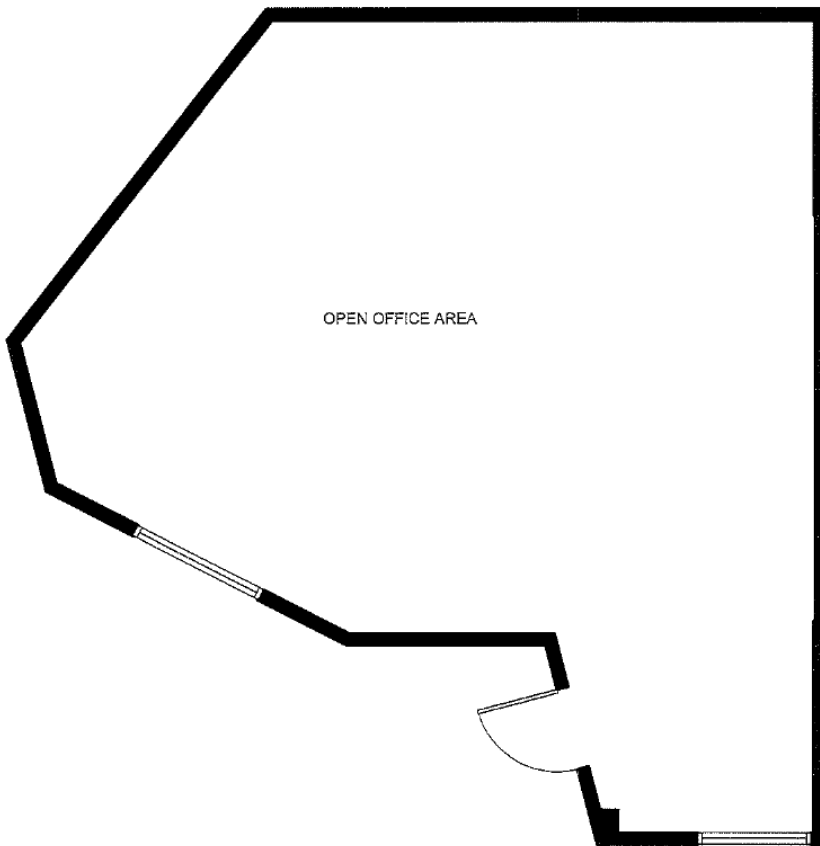
3250-3300 Washtenaw Avenue  
Ann Arbor, Michigan 48104



**Suite 295**

**790 RSF**

**\$17.50/SF + Utilities**



## Contact

**Kyle Passage**  
Senior Associate  
+1 248 358 6113  
kyle.passage@cushwake.com

**Tony Avendt**  
Executive Director  
+1 248 358 6115  
tony.avendt@cushwake.com

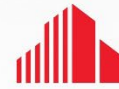
27777 Franklin Road, Suite 1050  
Southfield, Michigan 48034  
Main +1 248 358 6100  
cushmanwakefield.com

**FOR LEASE**

# Arlington Square

3250-3300 Washtenaw Avenue

Ann Arbor, Michigan 48104



**CUSHMAN &  
WAKEFIELD**



**Property lines are approximate**

## Contact

**Kyle Passage**

Senior Associate

+1 248 358 6113

[kyle.passage@cushwake.com](mailto:kyle.passage@cushwake.com)

**Tony Avendt**

Executive Director

+1 248 358 6115

[tony.avendt@cushwake.com](mailto:tony.avendt@cushwake.com)

27777 Franklin Road, Suite 1050

Southfield, Michigan 48034

Main +1 248 358 6100

[cushmanwakefield.com](http://cushmanwakefield.com)