

FOR SUBLEASE

8 KING STREET EAST

*12TH FLOOR
APPROXIMATELY 7,751 SF*



Net Rent

Please call listing agent to discuss

Additional Rent

\$28.51 PSF (2023 estimate)

Occupancy

Immediate

Sublease Term

January 30, 2025



12TH FLOOR - APPROXIMATELY 7,751 SF

Property Highlights



Located at the corner of Yonge & King in Toronto's financial core



Furniture is available



Nicely improved with reception, boardroom, team rooms, 11 offices and open area



Steps to King Subway Station and King Street Streetcar

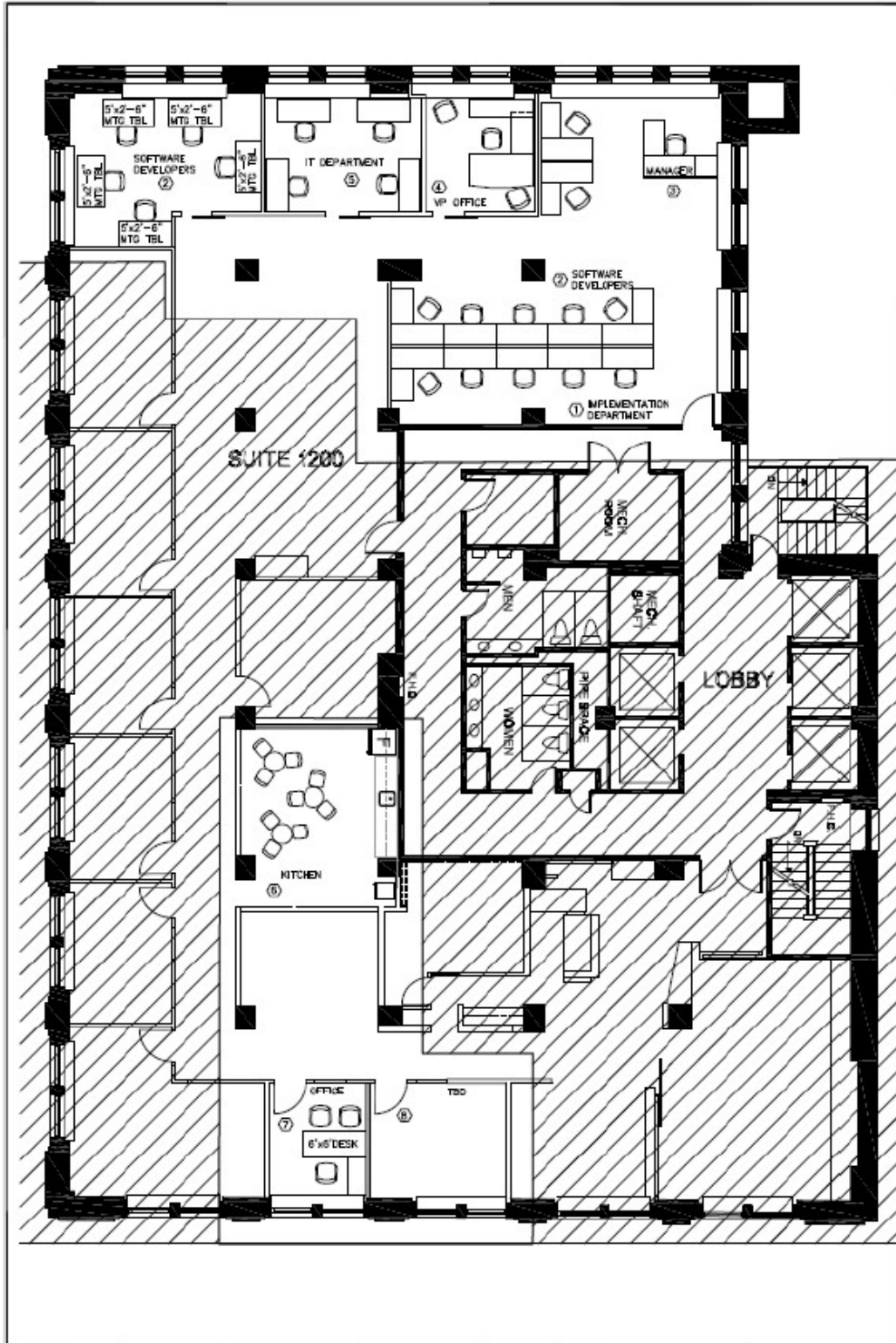


Ample natural light



Convenient access to fantastic amenities including hotels, restaurants, cafes, the PATH, shopping and fitness centres

Floor Plan



*PHOTO
GALLERY*





CONTACT INFORMATION

CAMERON MITCHELL*
Vice President
Cushman & Wakefield
Direct: +1 416 359 2445
Mobile: +1 416 786 0500
cam.mitchell@cushwake.com

161 Bay Street, Suite 1500
P.O. Box 602
Toronto, ON M5J 2S1
+1 416 862 0611
cushmanwakefield.com



©2023 Cushman & Wakefield. All rights reserved. The information contained in this communication is strictly confidential. This information has been obtained from sources believed to be reliable but has not been verified. NO WARRANTY OR REPRESENTATION, EXPRESS OR IMPLIED, IS MADE AS TO THE CONDITION OF THE PROPERTY (OR PROPERTIES) REFERENCED HEREIN OR AS TO THE ACCURACY OR COMPLETENESS OF THE INFORMATION CONTAINED HEREIN, AND SAME IS SUBMITTED SUBJECT TO ERRORS, OMISSIONS, CHANGE OF PRICE, RENTAL OR OTHER CONDITIONS, WITHDRAWAL WITHOUT NOTICE, AND TO ANY SPECIAL LISTING CONDITIONS IMPOSED BY THE PROPERTY OWNER(S). ANY PROJECTIONS, OPINIONS OR ESTIMATES ARE SUBJECT TO UNCERTAINTY AND DO NOT SIGNIFY CURRENT OR FUTURE PROPERTY PERFORMANCE. *Sales Representative