

MONON & MAIN

211 W MAIN STREET

CARMEL, IN

FIRST CLASS OFFICE SPACE IN THE HEART OF
CARMEL ARTS & DESIGN DISTRICT

AVAILABLE

SUITE 200: 9,606 RSF | SUITE 400: 9,633 RSF



 CUSHMAN &
WAKEFIELD

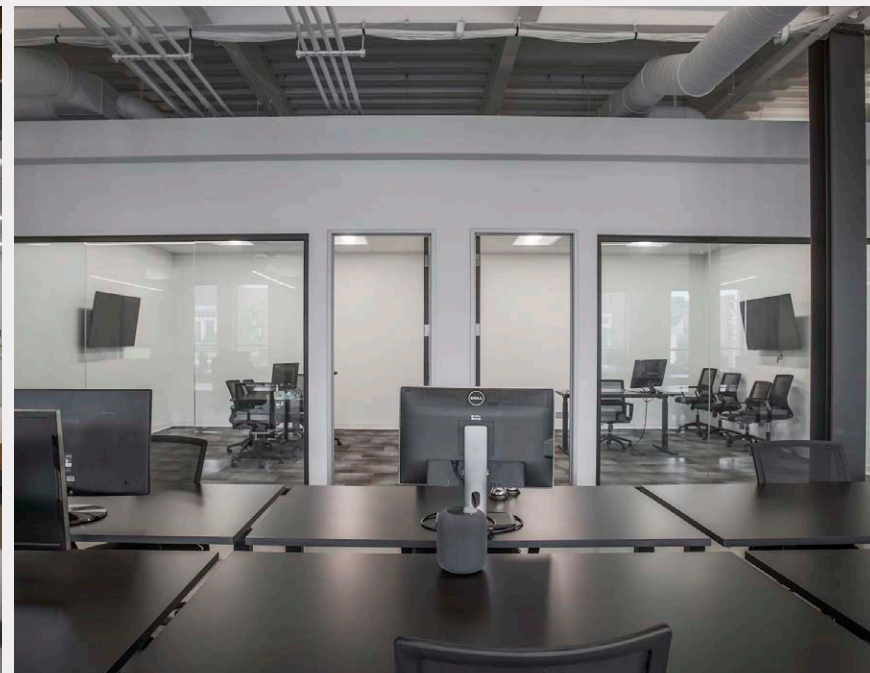
FOR LEASE
MONON & MAIN
211 W MAIN ST.
CARMEL, IN



LOCATION DESCRIPTION

Suite 200 (9,606 RSF) encompasses the entire 2nd floor and is now available for lease! This rare opportunity sits at the intersection of Main Street and Monon Boulevard in Carmel's Arts and Design District.

The **Monon and Main** development serves as a gateway into Carmel's Monon Greenway, an urban trail corridor linking the city's premier cultural destinations. This transformational recreational amenity has enhanced the community's connectivity and walkability, making it a perfect location for any business looking to set up shop in the ultimate live, work, and play environment.



David A. Moore, SIOR, CCIM
Managing Director
+1 317 639 0490
david.moore@cushwake.com

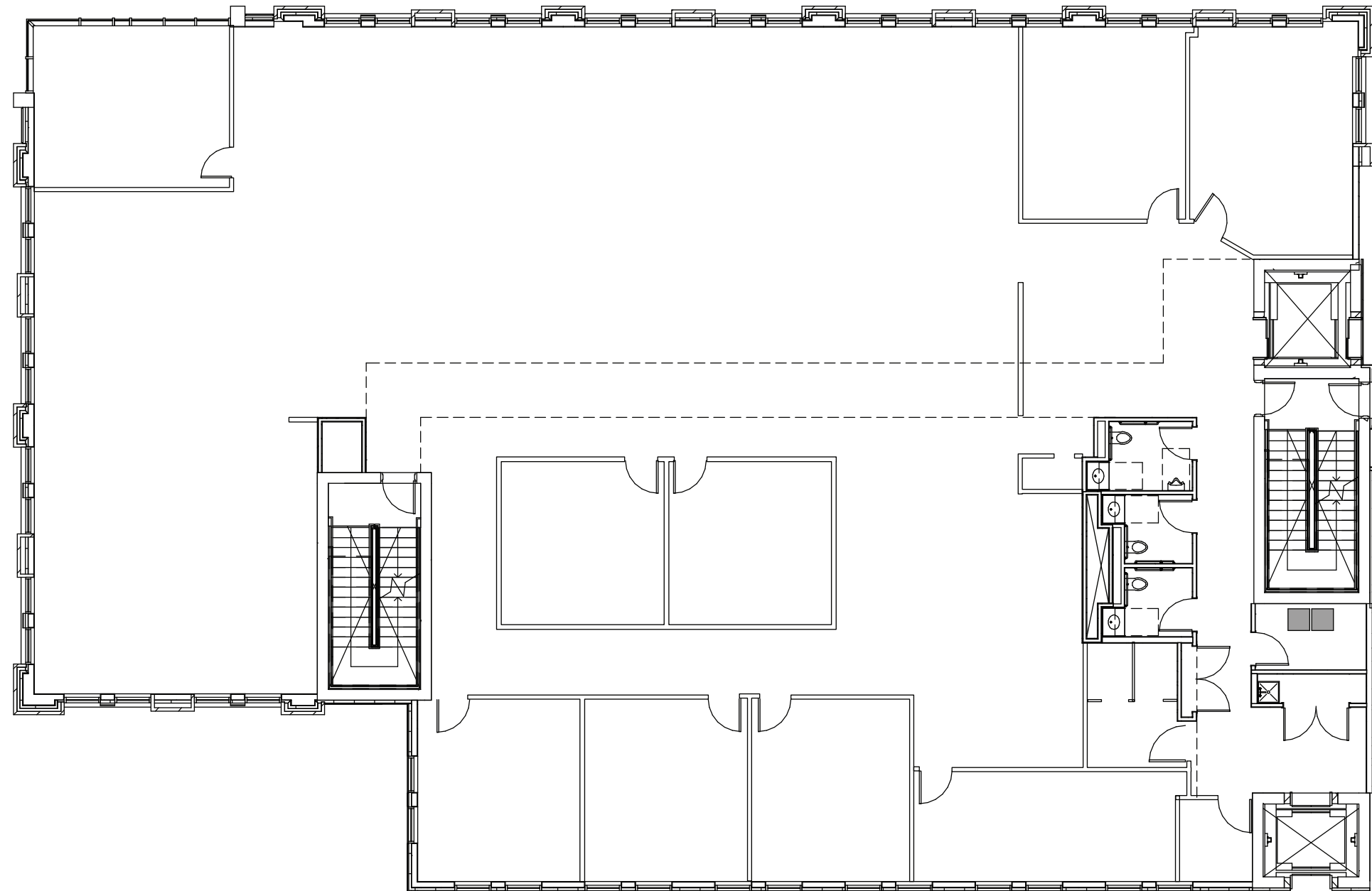
One American Square, Suite 1800
Indianapolis, IN 46282
+1 317 634 6363

cushmanwakefield.com



FLOOR PLAN

MONON & MAIN | 211 W MAIN STREET, CARMEL, IN



Suite 200: 9,606 RSF

Virtual Tour [Click Here](#)



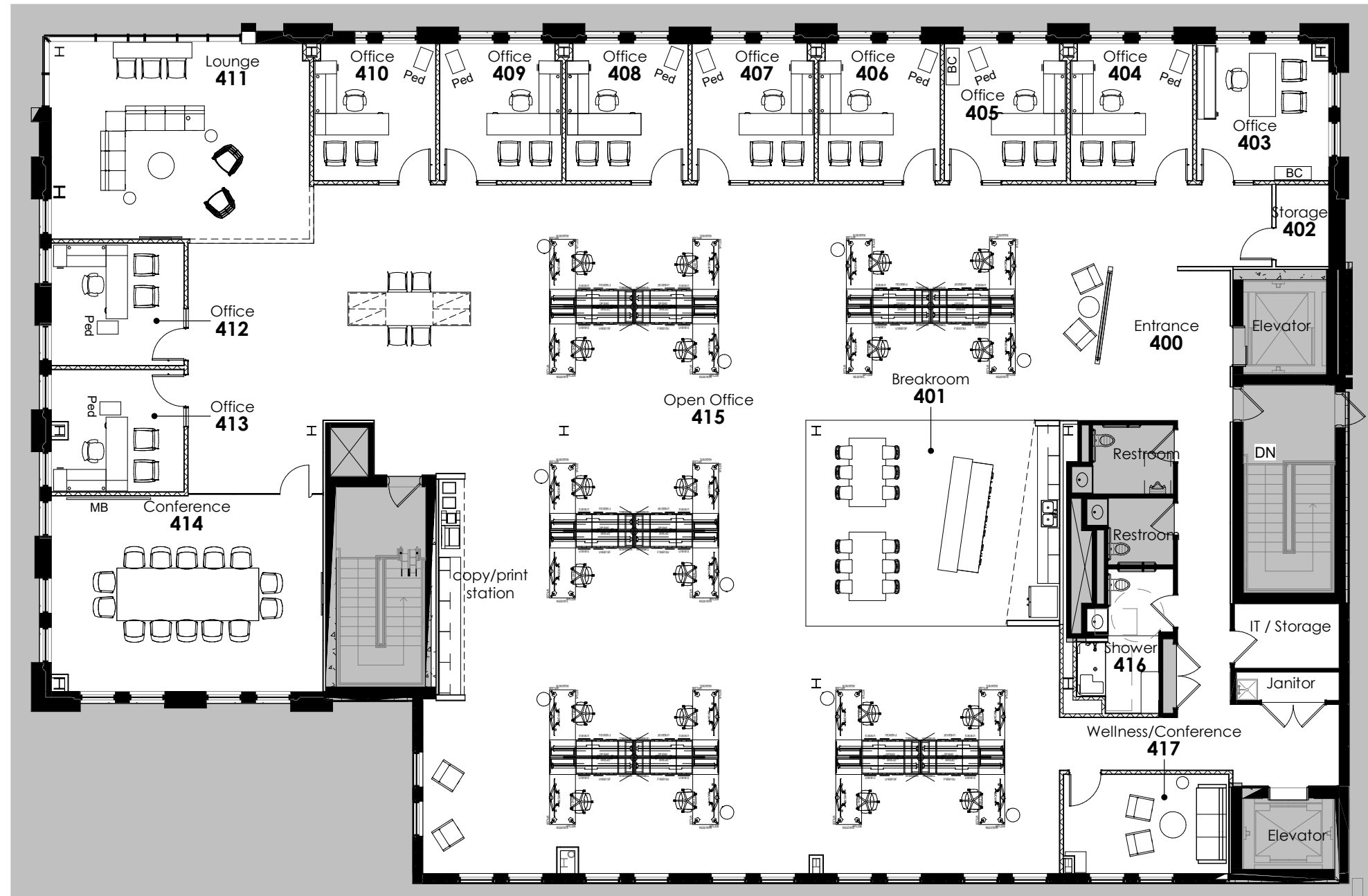
One American Square, Suite 1800
Indianapolis, IN 46282
+1 317 634 6363

cushmanwakefield.com

David A. Moore, SIOR, CCIM
Managing Director
+1 317 639 0490
david.moore@cushwake.com

FLOOR PLAN

MONON & MAIN | 211 W MAIN STREET, CARMEL, IN



Suite 400: 9,633 RSF

Virtual Tour [Click Here](#)



One American Square, Suite 1800
Indianapolis, IN 46282
+1 317 634 6363

cushmanwakefield.com

David A. Moore, SIOR, CCIM
Managing Director
+1 317 639 0490
david.moore@cushwake.com

Area Highlights



City Center: A mixed-use dining and shopping destination featuring the Hotel Carmichael Autograph Collection and eateries including Cake Bake Shop, Matt the Miller's Tavern, and Divvy.



Midtown Plaza: Located just steps from Monon and Main, this revitalization of Carmel's old industrial area is now a thriving center of entertainment.



Center for the Performing Arts: A three-venue arts campus anchored by The Palladium, a state-of-the-art concert venue.



Monon Trail: This paved pedestrian pathway is one of the most popular amenities in central Indiana.

Building Details

- Suite 200, 9,606 RSF available for lease
- Suite 400, 9,633 RSF available for lease
- Modern Design; Mix of Open and Private Office Space
- Located in the Heart of Carmel's Arts and Design District
- Part of a 36,000 SF Class A Mixed-Use Development, Adjacent to Anthony's Chophouse and 3UP Rooftop Bar
- Free Parking - 200 Space, 3-Story Garage
- Secured Elevator Access to Suites via Garage Lobby
- 24/7 On-Site Security Cameras and Key Fob Entry

David A. Moore, SIOR, CCIM
Managing Director
+1 317 639 0490
david.moore@cushwake.com

One American Square, Suite 1800
Indianapolis, IN 46282
+1 317 634 6363

cushmanwakefield.com

