

10
CLAY
TU

10,620 RSF
FOR SUBLEASE

**HIGH END OFFICE
WITH WATER VIEWS**

10 CLAY ST #200, OAKLAND, CA



**CUSHMAN &
WAKEFIELD**

555 12th Street, Suite 100, Oakland CA 94607
1.510.465.8000 | Lic. #00616335
cushmanwakefield.com

RYAN HATTERSLEY
Vice Chairman
510-891-5802
ryan.hattersley@cushwake.com
CA RE License #01354553

DAVID CULLEN
Director, Brokerage Marketing
510-267-6010
david.cullen@cushwake.com
CA RE License #02102633



BUILDING HIGHLIGHTS



lease expiration date:
9/30/25



credit sublessor



spectacular super high
end office space on
the water



JLSQ water ferry
terminal next to
building



beautiful waterfront
grass and landscaping
in front of building



located next to the
waterfront hotel

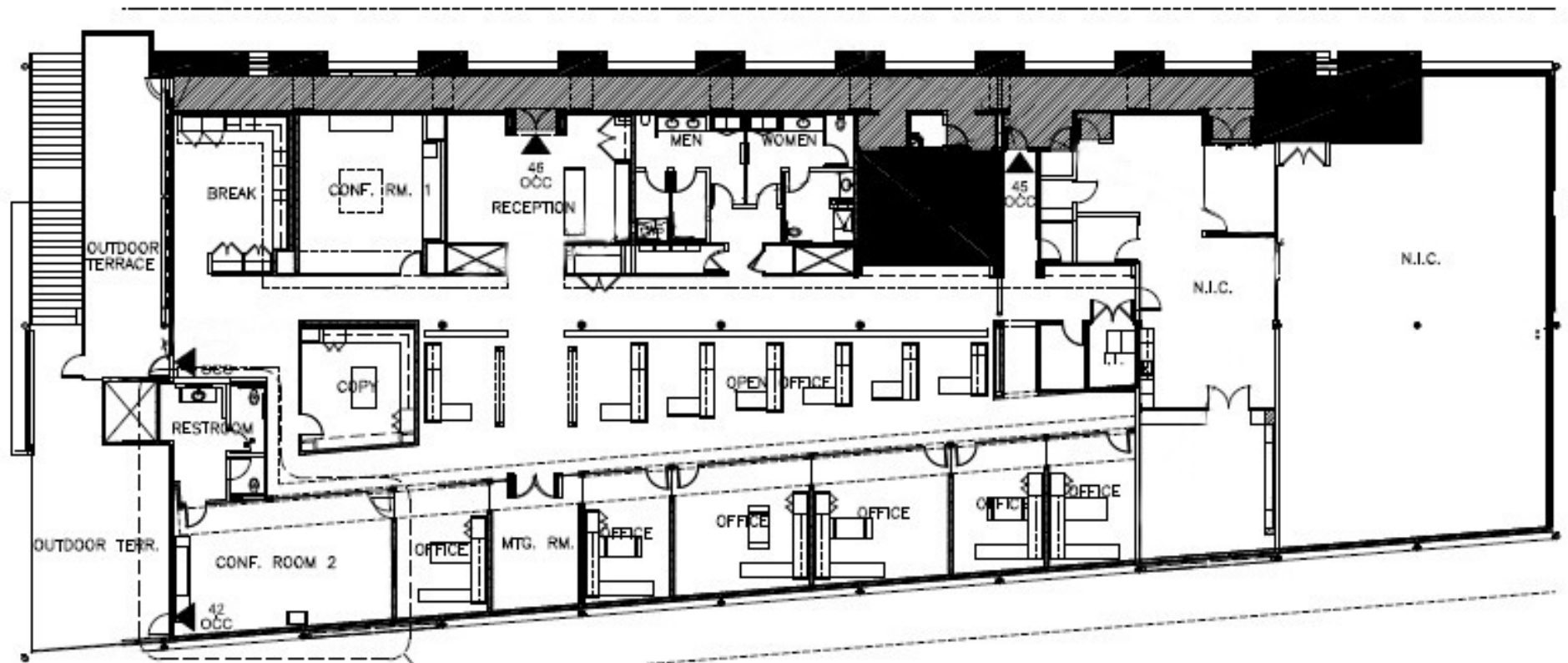


ample parking in port
of oakland garage



FLOOR PLAN

SUITE 200 - 10,620 RSF AVAILABLE



INTERIOR PHOTOS





NEARBY RESTAURANTS

within the jack london square project

- Left Bank Brasserie
- Ben & Jerry's
- Farmhouse Kitchen Thai Cuisine
- Forge hand crafted pizza
- Kuidaore Handroll Bar
- Dragon Gate
- Miz Comida Casera
- Noka Ramen Bar
- The Plank (bowling, bocce, arcade, restaurant and bar)
- Rosenblum Cellars
- Scotts Seafood
- Seabreeze on the Dock
- Waterfront Café and Bar
- Yoshi's Sushi and Jazz club

IDEAL LAYOUT

for professional services firms



7 waterfront private offices



7 spacious workstations



1 medium conference room



1 large waterfront board room



1 quiet room/phone room



amazing kitchen/break area with private balcony and water views



formal reception area



dedicated restrooms and showers

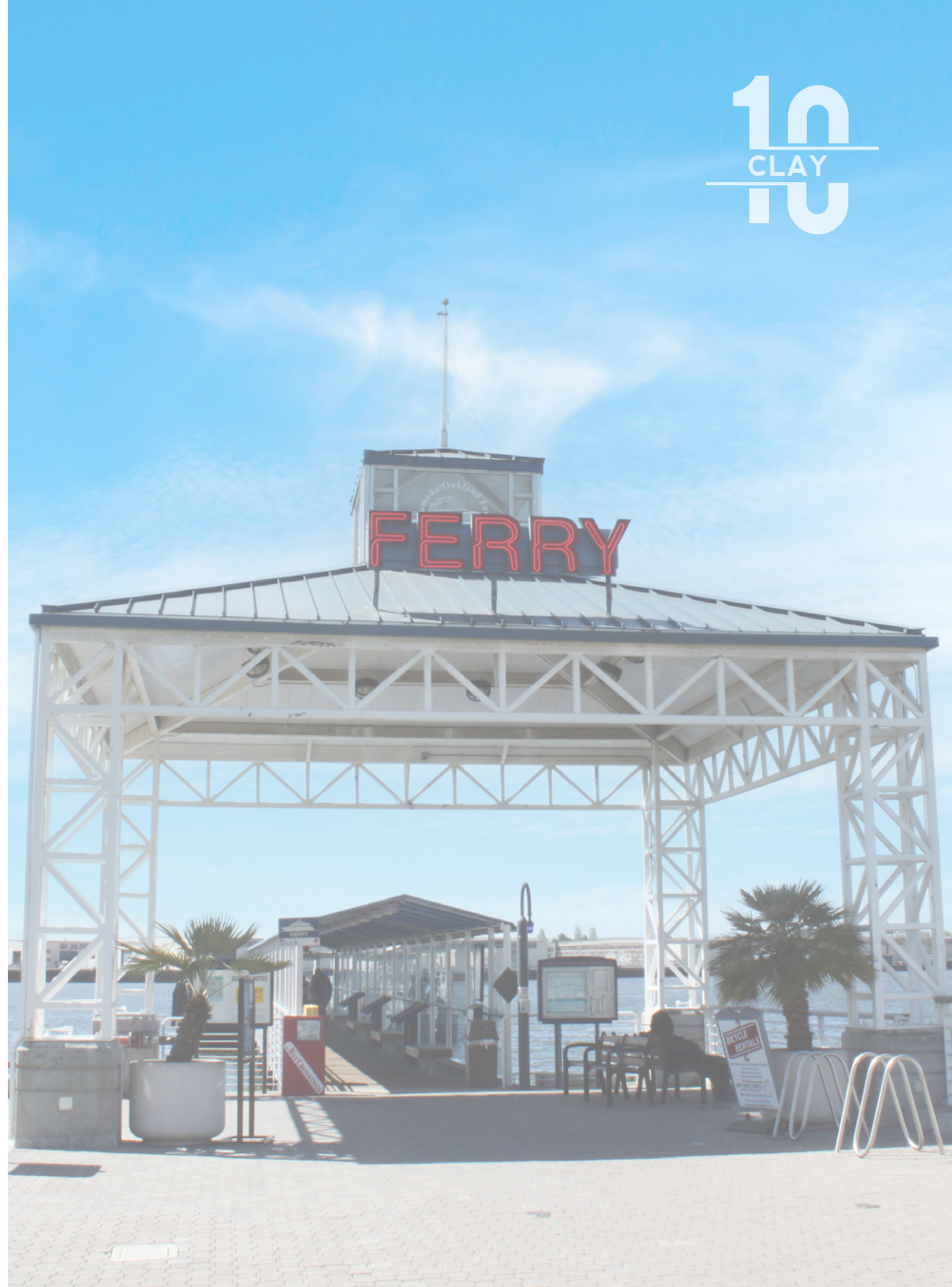


very high open ceilings throughout



floor to ceiling window line throughout

10
CLAY



10 CLAY TU

RYAN HATTERSLEY

Vice Chairman
510-891-5802

ryan.hattersley@cushwake.com
CA RE License #01354553

DAVID CULLEN

Director, Brokerage Marketing
510-267-6010

david.cullen@cushwake.com
CA RE License #02102633



555 12th Street, Suite 100, Oakland CA 94607
1.510.465.8000 | Lic. #00616335
cushmanwakefield.com

©2023 Cushman & Wakefield. All rights reserved. The information contained in this communication is strictly confidential. This information has been obtained from sources believed to be reliable but has not been verified. NO WARRANTY OR REPRESENTATION, EXPRESS OR IMPLIED, IS MADE AS TO THE CONDITION OF THE PROPERTY (OR PROPERTIES) REFERENCED HEREIN OR AS TO THE ACCURACY OR COMPLETENESS OF THE INFORMATION CONTAINED HEREIN, AND SAME IS SUBMITTED SUBJECT TO ERRORS, OMISSIONS, CHANGE OF PRICE, RENTAL OR OTHER CONDITIONS, WITHDRAWAL WITHOUT NOTICE, AND TO ANY SPECIAL LISTING CONDITIONS IMPOSED BY THE PROPERTY OWNER(S). ANY PROJECTIONS, OPINIONS OR ESTIMATES ARE SUBJECT TO UNCERTAINTY AND DO NOT SIGNIFY CURRENT OR FUTURE PROPERTY PERFORMANCE.