

220

HUMBOLDT COURT

SUNNYVALE, CA



±50,112 SF AVAILABLE FOR LEASE/SALE



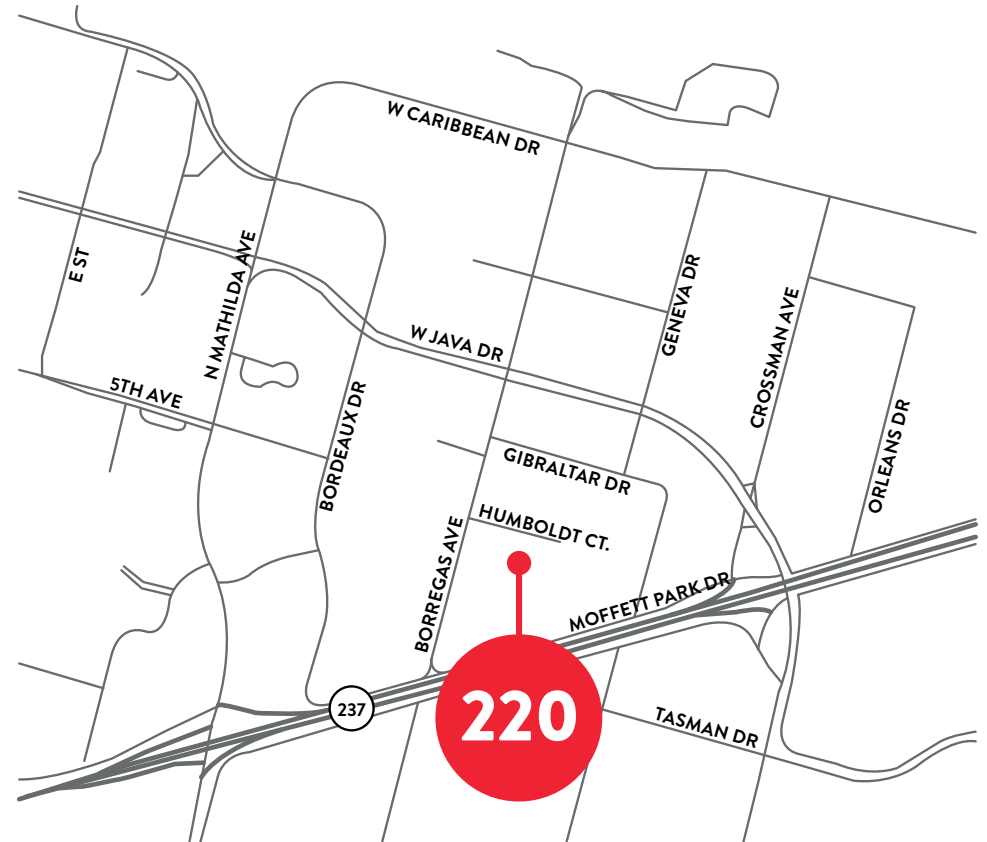


HUMBOLDT COURT

HIGHLIGHTS

- ±50,112 SF Office/R&D Freestanding Building
- ±11' Drop Ceilings
- Skylights Throughout
- Full Service Cafeteria
- Showers & Lockers
- Glass Grade Level Door
- Additional GL Door & Dock High Loading Potential
- ±5/1,000 Parking
- ±2,800 SF Lab / Data Center with 70 Tons of Dedicated HVAC
- *2,000 Amps at 277/480V Electrical Service
- 750 KW/937 KVA .308 Caliber Backup Generator (Onan model DFHA-4947712)
- Fiber Optic Service Infrastructure
- 8 Minute Walk to VTA Light Rail Station (Borregas) with Connections to Caltrain Baby Bullet Service (Downtown Mountain View)

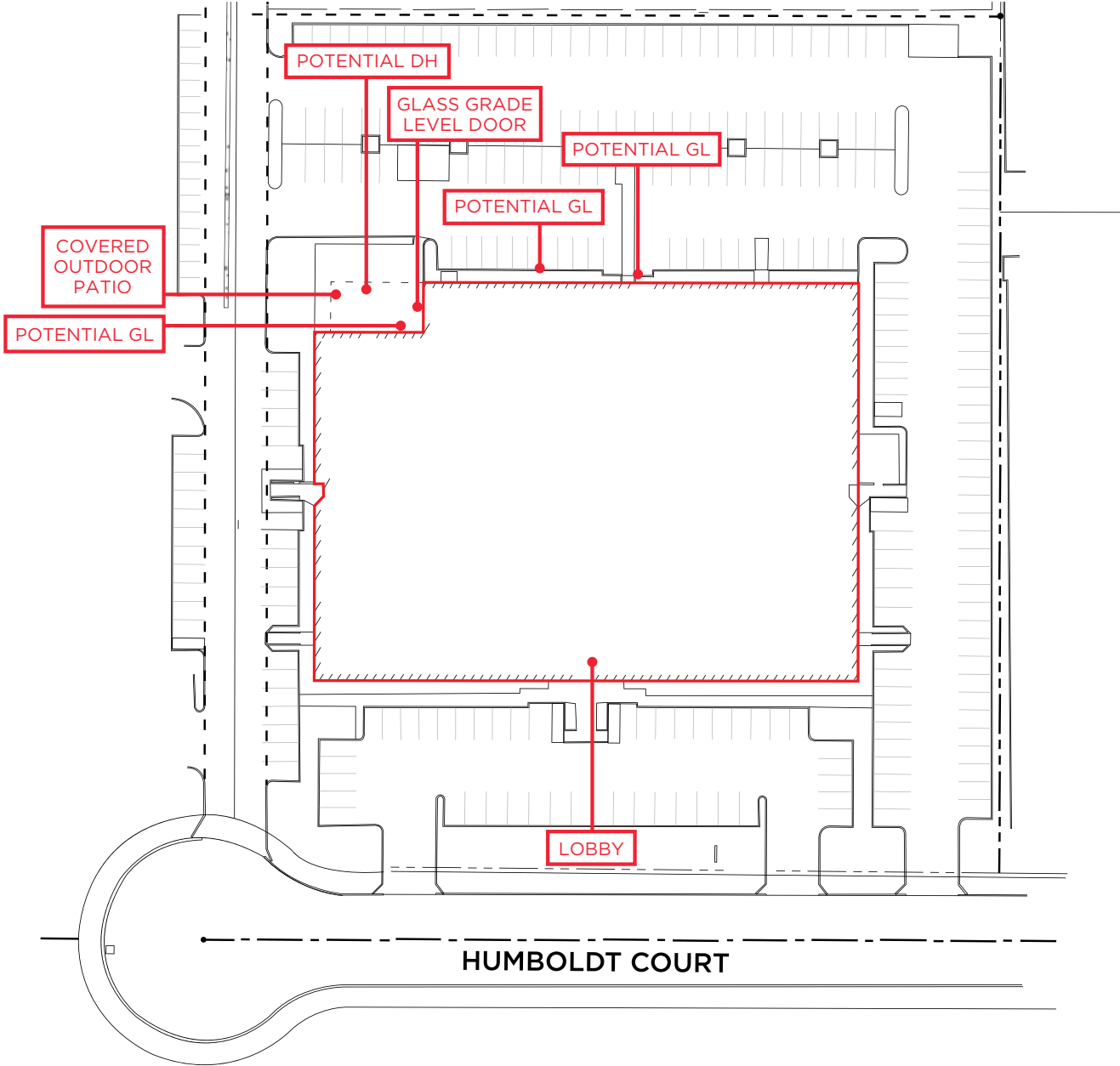
**Tenant to verify*



220

HUMBOLDT COURT

SITE PLAN

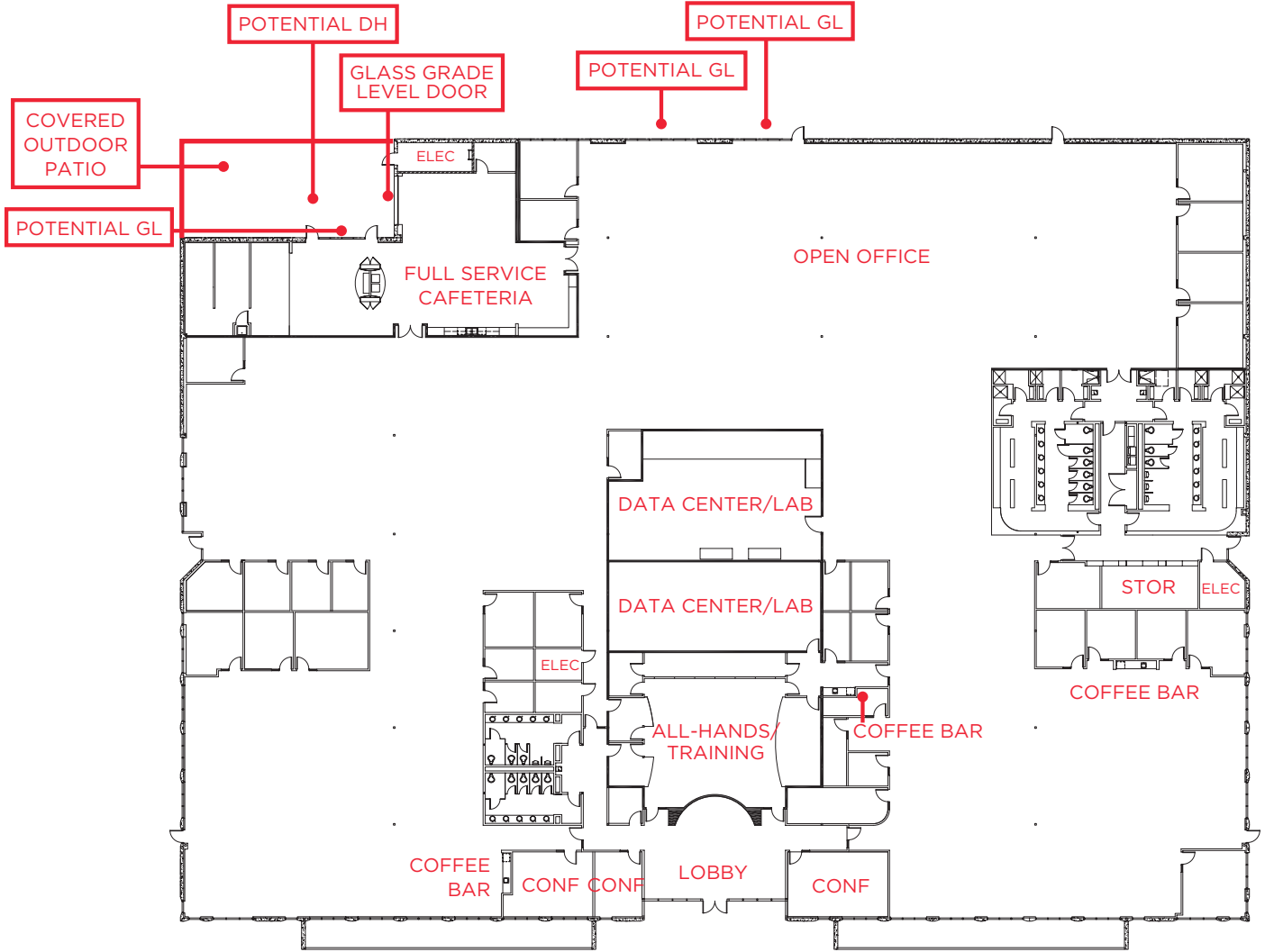


220

HUMBOLDT COURT

FLOOR PLAN

- 21 OFFICES
- 3 CONFERENCE ROOMS
- ALL HANDS ROOM
- 2 DATA CENTERS/LABS
- FULL SERVICE CAFETERIA
- 3 COFFEE BARS
- SHOWERS & LOCKERS



HUMBOLDT COURT



HUMBOLDT COURT

AMENITIES & TRANSPORTATION



8 MINUTE WALK TO BORREGAS LIGHT RAIL STATION

220

HUMBOLDT COURT

SUNNYVALE, CA | ±50,112 SF FOR LEASE/SALE

Kelly Yoder

kelly.yoder@cushwake.com
+1 408 615 3427
LIC. 01821117

Steve Horton

steve.horton@cushwake.com
+1 408 615 3412
LIC. 001127340

Gregory M Davies

gregory.davies@jll.com
+1 408 221 0290
LIC. 01362233

