

FOR SUBLEASE

600 Busse Road

Elk Grove Village, Illinois



CUSHMAN &
WAKEFIELD

19,190 Sq. Ft.

ELK GROVE INDUSTRIAL PARK

SUBLEASE
AVAILABLE

AVAILABILITY HIGHLIGHTS



Free standing building with Busse Road frontage/ identity



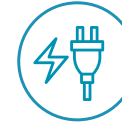
TOTAL BUILDING SIZE

19,190 SF



SPACE AVAILABLE

19,190 SF



POWER

400 AMPS / 240 VOLT



OFFICE SIZE

+/- 4,500 SF



TRUCK DOCKS

2 EXTERIOR (1 W/LEVELER)



CLEAR HEIGHT

24'



LEASE EXPIRATION

12/31/25



ASKING SUBLEASE RATE

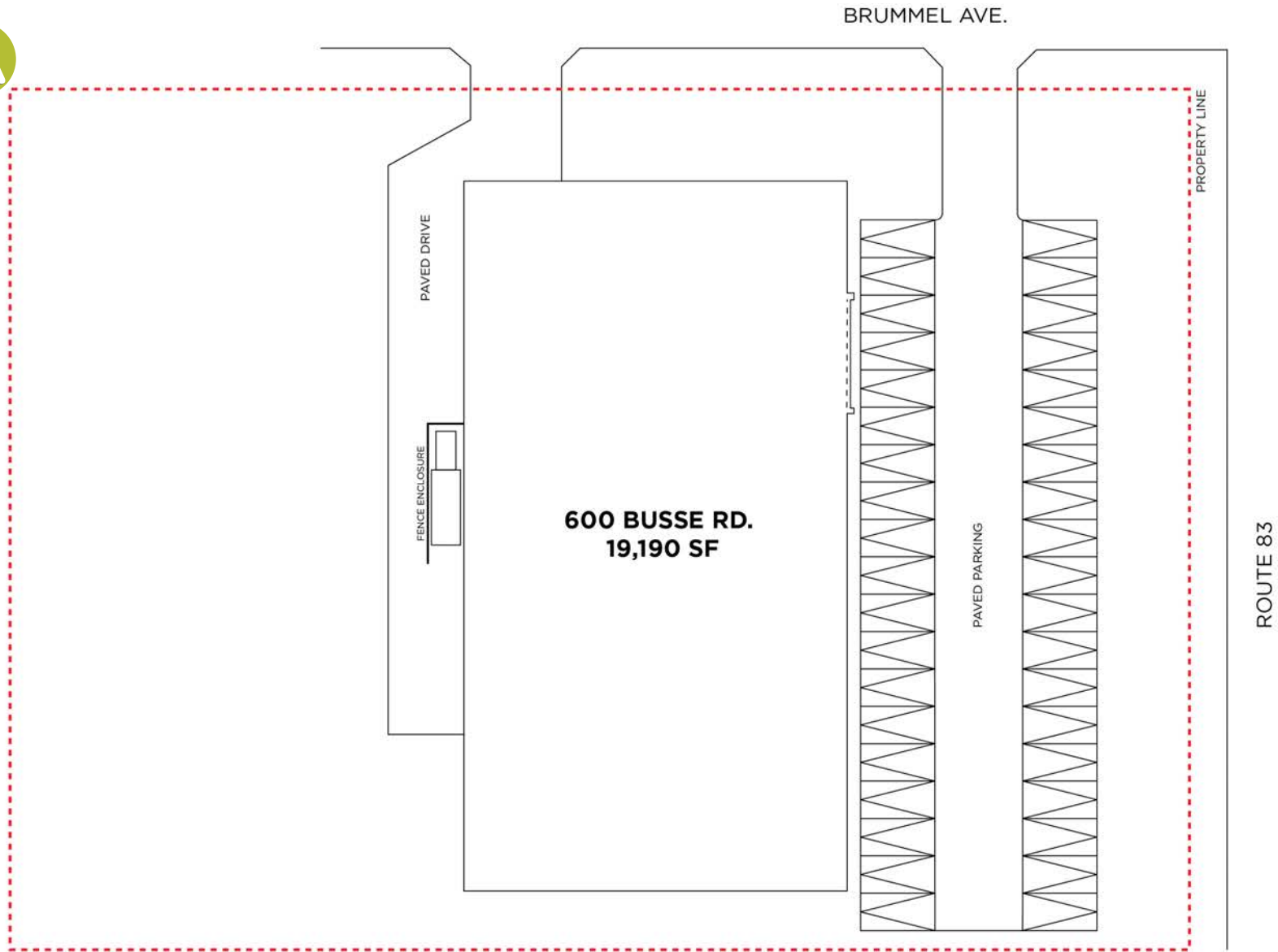
\$10.00 P.S.F. NET



REAL ESTATE TAXES

\$2.91 P.S.F.

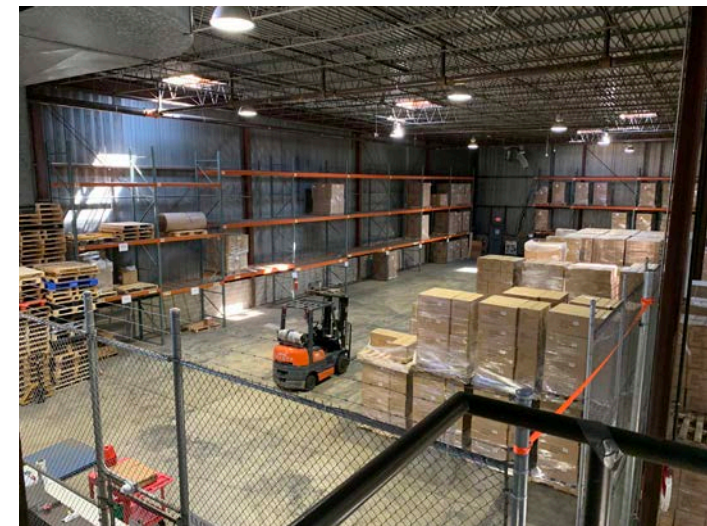
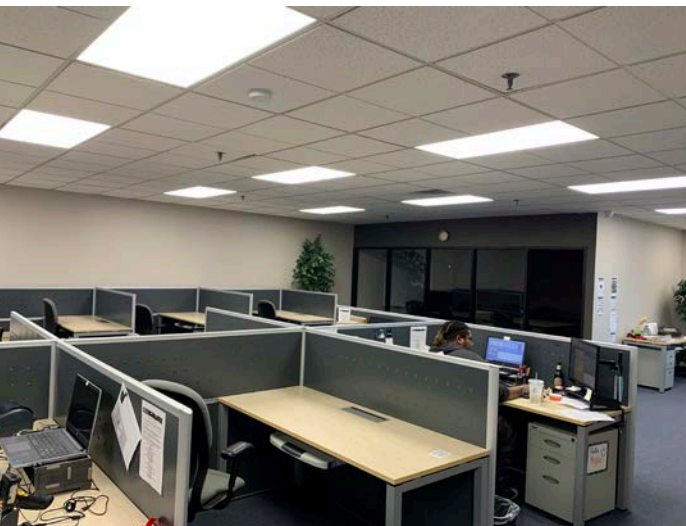
PROPERTY FLOOR PLAN



PROPERTY PHOTOGRAPHY

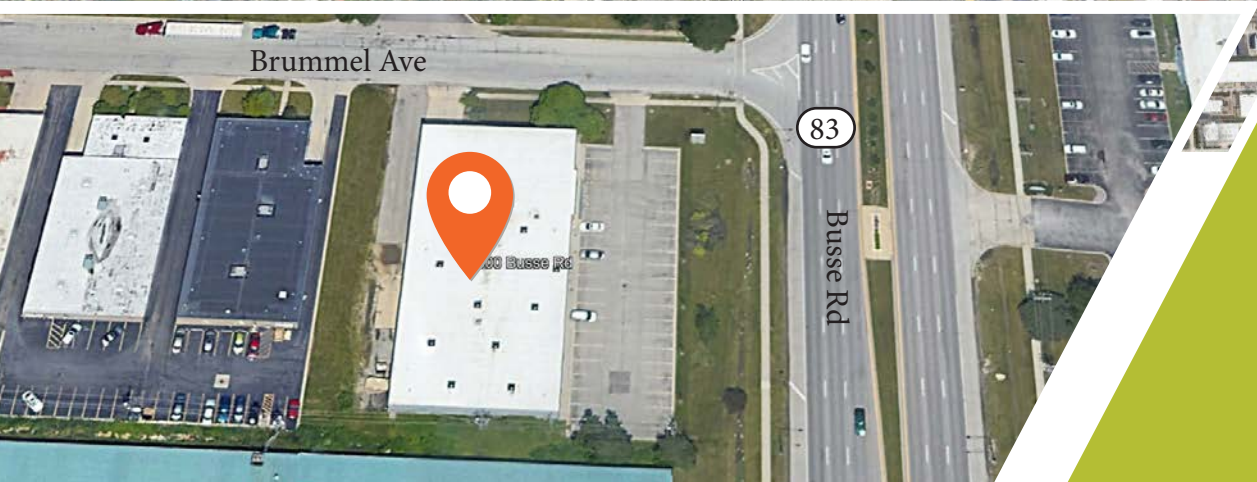
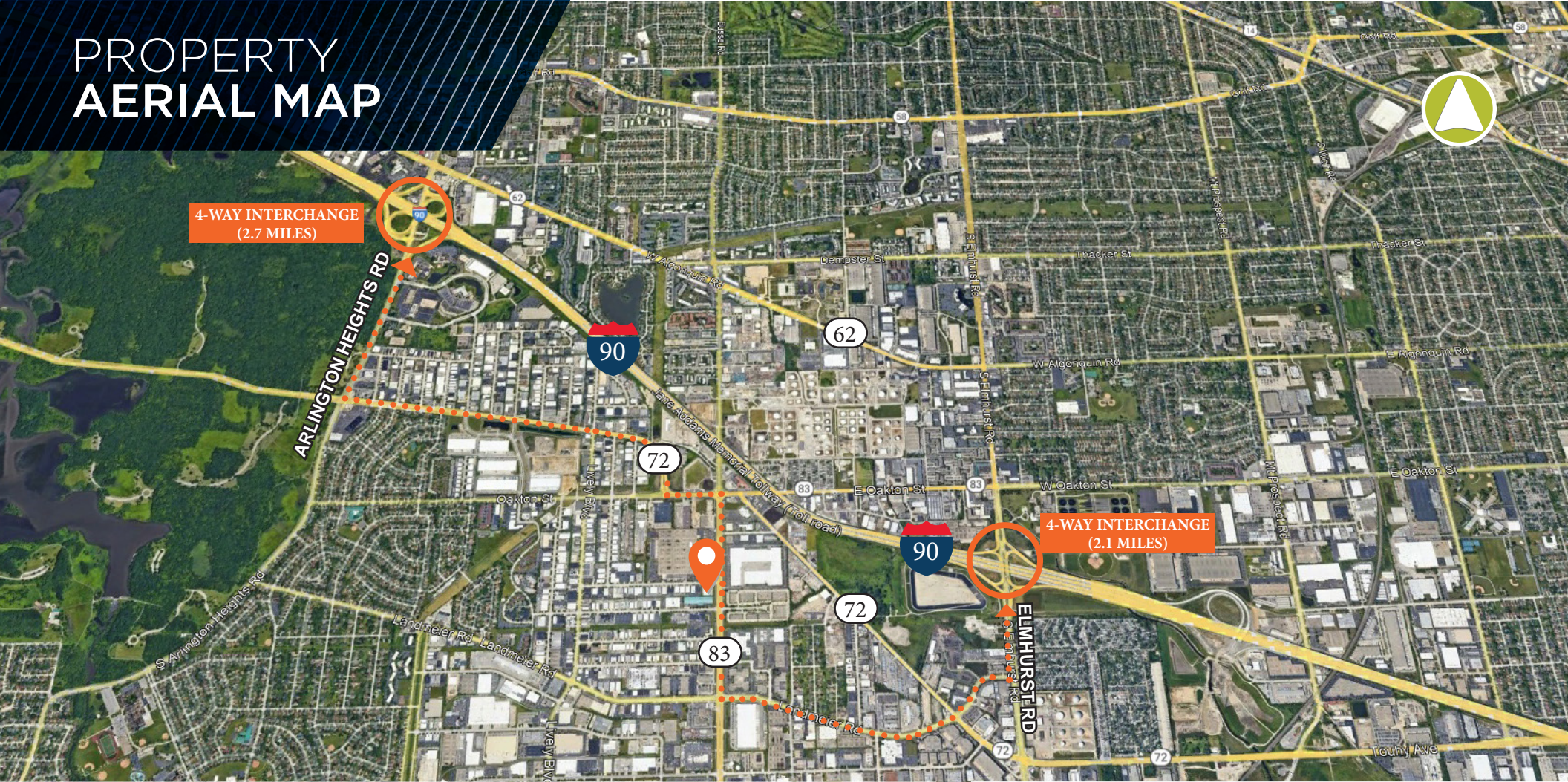


PRIME LOCATION
O'Hare Submarket
Alternative
Available Immediately

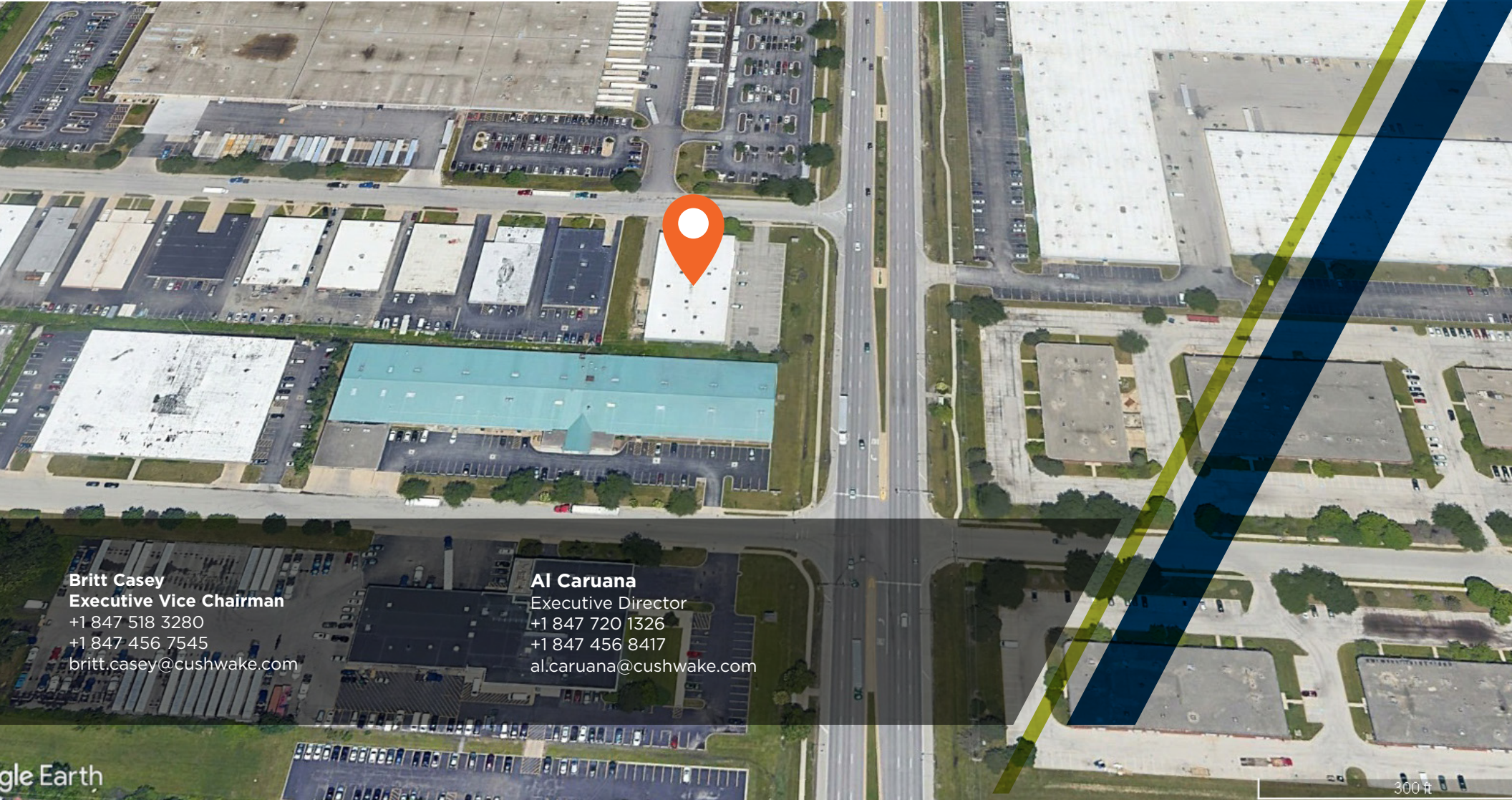


600 BUSSE ROAD, ELK GROVE VILLAGE

PROPERTY AERIAL MAP



Less than 3 miles from
2 full interchanges
Route 83 & I-90
Arlington Heights Rd & I-90



Britt Casey
Executive Vice Chairman
+1 847 518 3280
+1 847 456 7545
britt.casey@cushwake.com

Al Caruana
Executive Director
+1 847 720 1326
+1 847 456 8417
al.caruana@cushwake.com

gle Earth

300 ft