



## SOUTH SUBMARKET



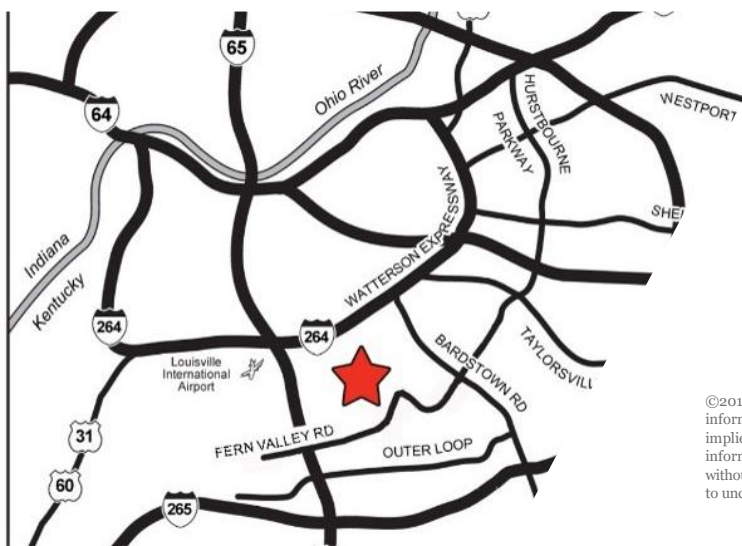
# 4720 PINWOOD RD

Louisville, KY 40218

**5,462 SF  
FOR SUBLEASE**

## PROPERTY HIGHLIGHTS

- Sublease opportunity that runs through March 31, 2028
- Located off Poplar Level Road, minutes from I-264
- 2,079 sf of well-appointed office space
- One 12' x 12' drive-in door serves warehouse area
- Zoned M-2



### BLAKE SCINTA, CCIM

Senior Associate  
+1 502 589 5150 ext. 230  
bscinta@commercialkentucky.com

### STEPHAN F. GRAY, SIOR

Senior Director  
+1 502 589 5150 ext. 256  
sgray@commercialkentucky.com

333 E. Main Street, Suite 510 | Louisville, KY 40202

+1 502 589 5150

[www.CommercialKentucky.com](http://www.CommercialKentucky.com)

©2019 Cushman & Wakefield. All rights reserved. The information contained in this communication is strictly confidential. This information has been obtained from sources believed to be reliable but has not been verified. No warranty or representation, express or implied, is made as to the condition of the property (or properties) referenced herein or as to the accuracy or completeness of the information contained herein, and same is submitted subject to errors, omissions, change of price, rental or other conditions, withdrawal without notice, and to any special listing conditions imposed by the property owner(s). Any projections, opinions or estimates are subject to uncertainty and do not signify current or future property performance.

# 4720 PINWOOD RD

Louisville, KY 40218

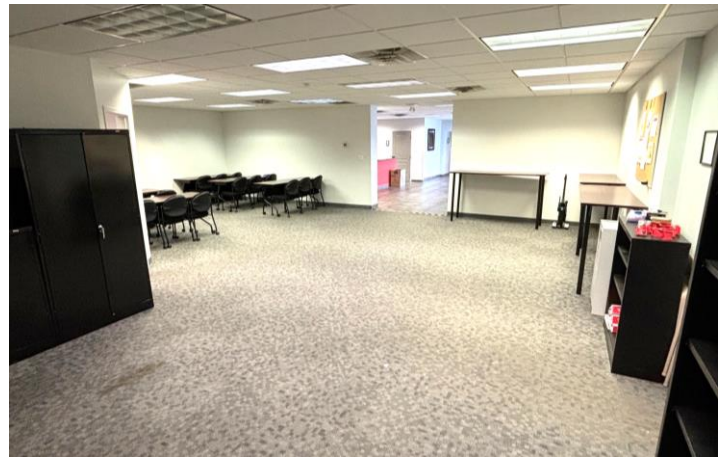
5,462 SF FOR SUBLEASE



## PHOTOS



**PARKING/LOADING**



**OPEN AREA**



**LOBBY**



**RECEPTION**

**BLAKE SCINTA, CCIM**  
Senior Associate  
+1 502 589 5150 ext. 230  
bscinta@commercialkentucky.com

**STEPHAN F. GRAY, SIOR**  
Senior Director  
+1 502 589 5150 ext. 256  
sgray@commercialkentucky.com

333 E. Main Street, Suite 510  
Louisville, KY 40202  
phone: +1 502 589 5150  
www.CommercialKentucky.com