

FOR LEASE

431 BURGESS DRIVE

Menlo Park, CA 94025

PRICE REDUCED

±1,957 SF OFFICE AVAILABLE

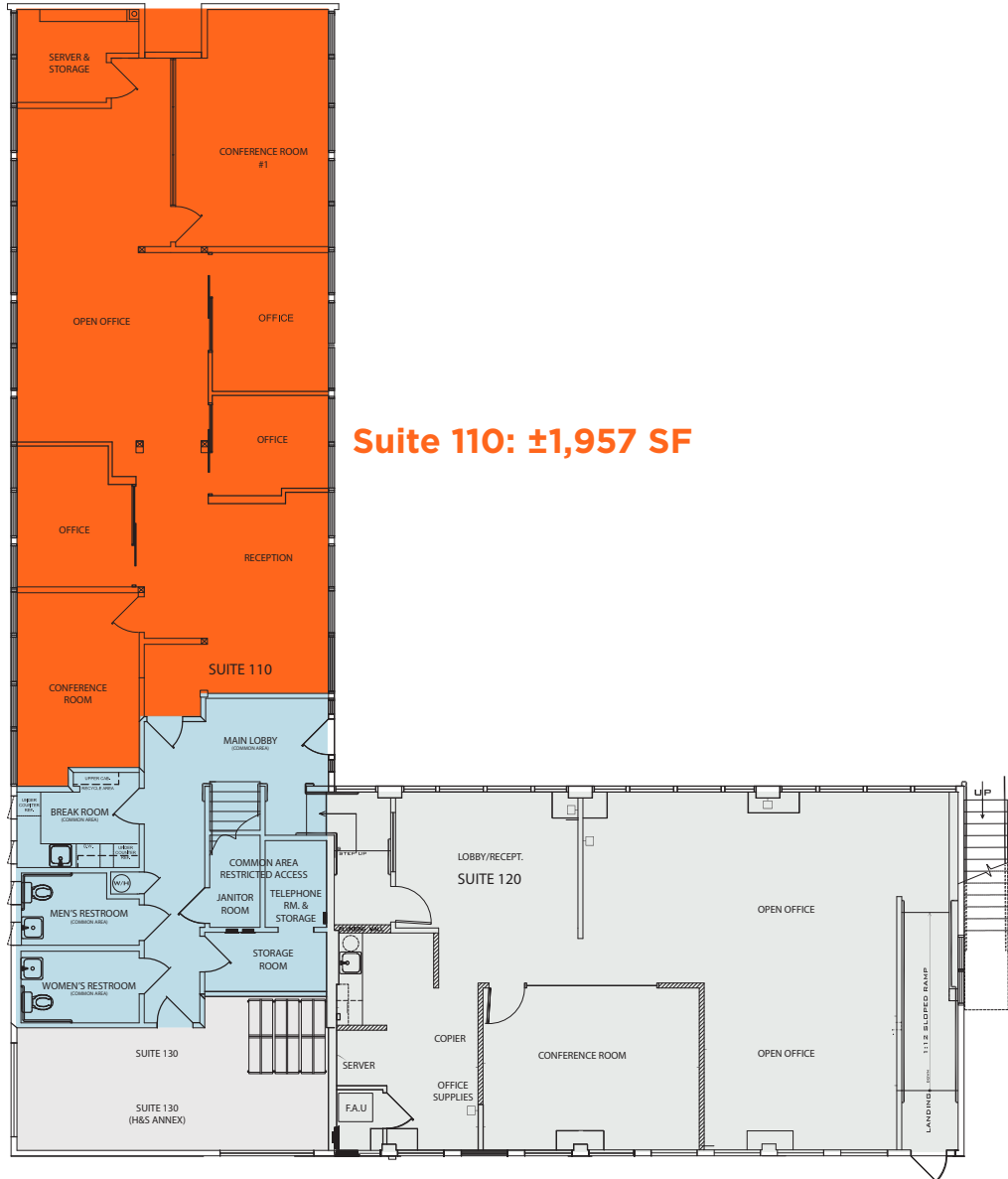
 **CUSHMAN &
WAKEFIELD**

PROPERTY HIGHLIGHTS

- Suite 110: ±1,957 SF
- Quiet park like setting
- Across from Burgess Park
- Good parking
- Walking distance to Caltrain
- Operable windows, lots of natural light



FLOOR PLAN



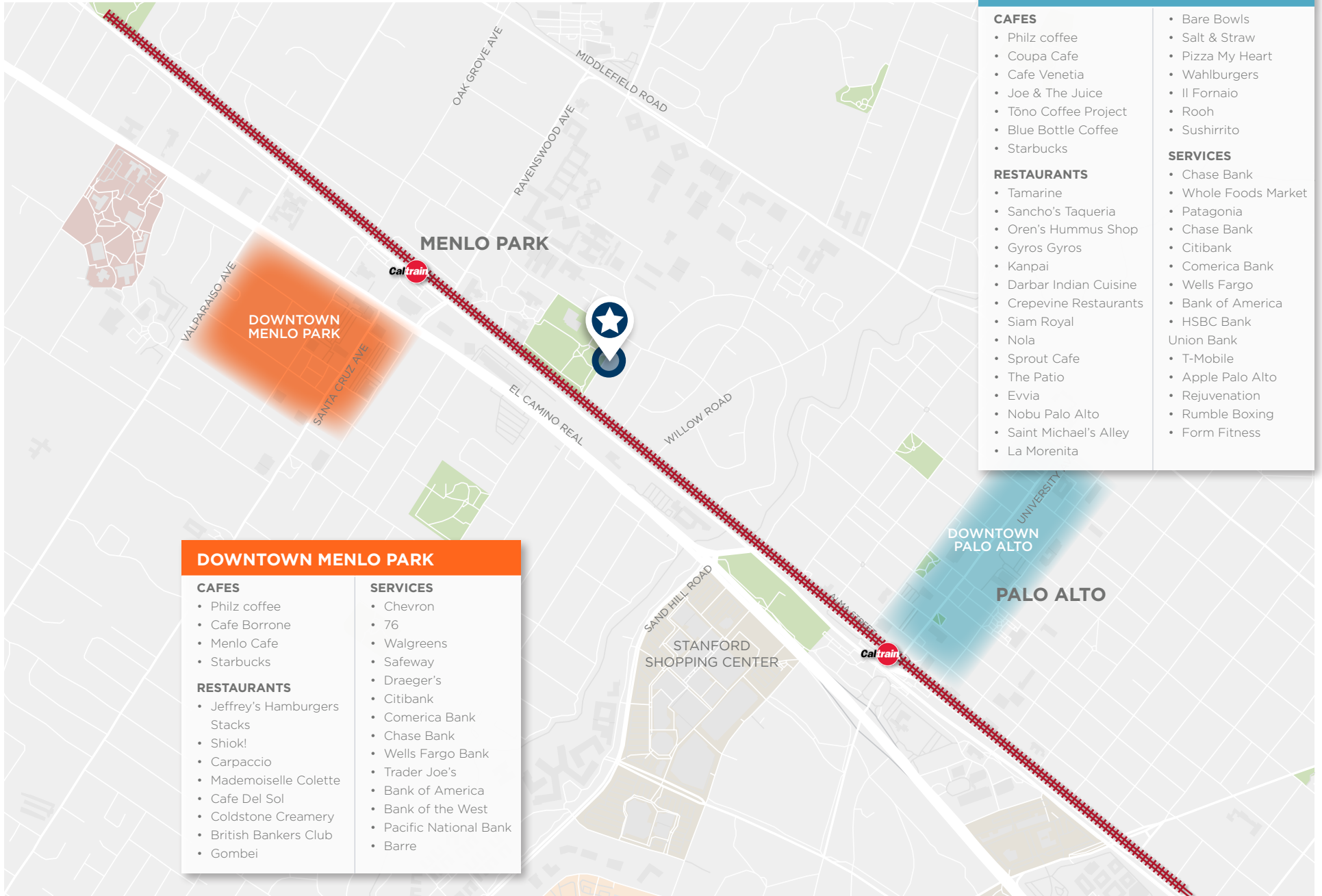
Suite 110: ±1,957 SF

Legend:

- Available Space
- Common Area
- Leased

Floor plan not to scale

AMENITIES



DOWNTOWN MENLO PARK

CAFES

- Philz coffee
- Cafe Borrone
- Menlo Cafe
- Starbucks

RESTAURANTS

- Jeffrey's Hamburgers Stacks
- Shiok!
- Carpaccio
- Mademoiselle Colette
- Cafe Del Sol
- Coldstone Creamery
- British Bankers Club
- Gombei

SERVICES

- Chevron
- 76
- Walgreens
- Safeway
- Draeger's
- Citibank
- Comerica Bank
- Chase Bank
- Wells Fargo Bank
- Trader Joe's
- Bank of America
- Bank of the West
- Pacific National Bank
- Barre

DOWNTOWN PALO ALTO

CAFES

- Philz coffee
- Coupa Cafe
- Cafe Venetia
- Joe & The Juice
- Tōno Coffee Project
- Blue Bottle Coffee
- Starbucks

RESTAURANTS

- Tamarine
- Sancho's Taqueria
- Oren's Hummus Shop
- Gyros Gyros
- Kanpai
- Darbar Indian Cuisine
- Crepevine Restaurants
- Siam Royal
- Nola
- Sprout Cafe
- The Patio
- Evvia
- Nobu Palo Alto
- Saint Michael's Alley
- La Morenita

- Bare Bowls
- Salt & Straw
- Pizza My Heart
- Wahlburgers
- Il Fornaio
- Rooh
- Sushirrito

SERVICES

- Chase Bank
- Whole Foods Market
- Patagonia
- Chase Bank
- Citibank
- Comerica Bank
- Bank of America
- HSBC Bank
- Union Bank
- T-Mobile
- Apple Palo Alto
- Rejuvenation
- Rumble Boxing
- Form Fitness

INTERIOR PHOTOS



FOR LEASE

431 BURGESS DRIVE

Menlo Park, CA 94025

CONTACT

DAVID DOVE

Director

+1 650 320 0212

david.dove@cushwake.com

LIC #01035766

525 University Ave, Ste 220

Palo Alto, California 94301

Main +1 650 852 1200

Fax +1 650 618 8560

cushmanwakefield.com



**CUSHMAN &
WAKEFIELD**

©April 9, 2024 10:02 AM Cushman & Wakefield. All rights reserved. The information contained in this communication is strictly confidential. This information has been obtained from sources believe to be reliable but has not been verified. NO WARRANTY OR REPRESENTATION, EXPRESS OR IMPLIED, IS MADE AS TO THE CONDITION OF THE PROPERTY (OR PROPERTIES) REFERENCED HEREIN OR AS TO THE ACCURACY OR COMPLETENESS OF THE INFORMATION CONTAINED HEREIN, AND SAME IS SUBMITTED SUBJECT TO ERRORS, OMISSIONS, CHANGE OF PRICE, RENTAL OR OTHER CONDITIONS, WITHDRAWAL WITHOUT NOTICE, AND TO ANY SPECIAL LISTING CONDITIONS IMPOSED BY THE PROPERTY OWNER(S). ANY PROJECTIONS, OPINIONS OR ESTIMATES ARE SUBJECT TO UNCERTAINTY AND DO NOT SIGNIFY CURRENT OR FUTURE PROPERTY PERFORMANCE.