

SUBLEASE AVAILABLE

18,901 SF



205 N Michigan Ave | Chicago, IL



*Breathtaking Views on the
Top Floor of Michigan Plaza
Term through 1/31/2026*

18,901 SF

44TH FLOOR

GENERAL INFORMATION

Available immediately

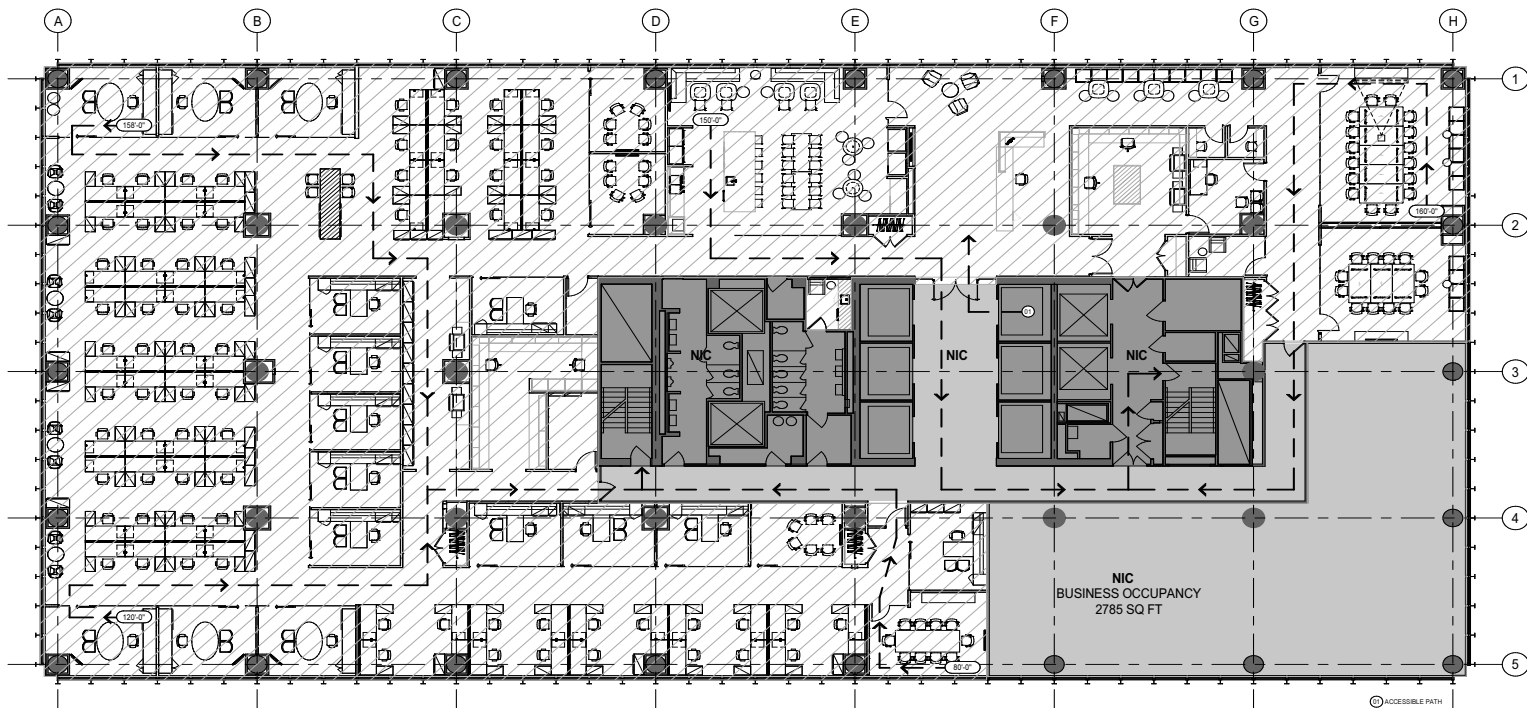
Term through January 2026

Negotiable Rental Rate

Furniture included

SPACE FEATURES

- 72 Workstations
- 16 Private Offices (glass fronts)
- 94 Total Seats
- 1 Large Conference Room (demising wall to create 2 conference rooms)
- 4 Huddle Rooms
- 2 Phone Booths
- 1 Large Kitchen with soft seating area
- Work room and mail room



* NO CHANGE OF OCCUPANCY CLASSIFICATION OR OCCUPANT LOAD *

Steve Schneider
Vice Chairman
+1 312 424 8119
steve.schneider@cushwake.com

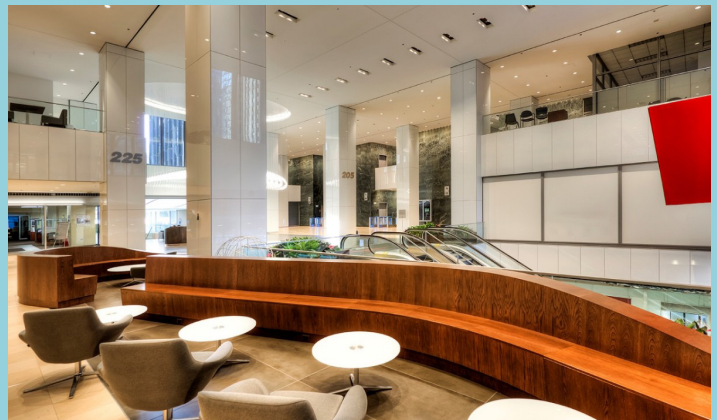
Andy Heymann
Senior Director
+1 312 424 8048
andrew.heyman@cushwake.com

Presley Norby
Associate
+1 312 338 7064
presley.norby@cushwake.com





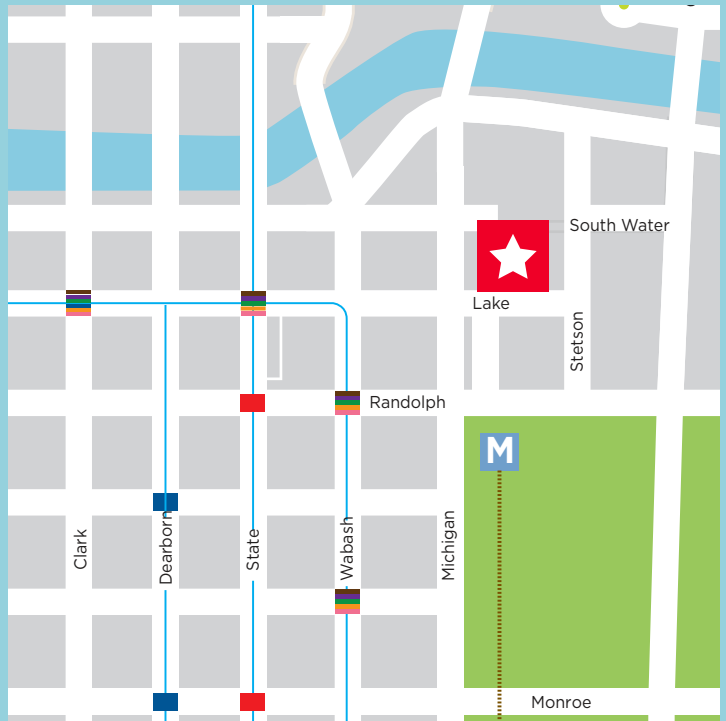
BUILDING FEATURES



- Heated underground parking garage, accommodating as many as 571 cars
- Manned Security
- Building conference center
- Fitness center
- Transit score (100)

Only a few blocks from:

- Chicago Millennium Station (South Shore Line)
- Chicago Millennium Station (Metra Electric Line)
- Randolph/Wabash Station (Downtown Loop)
- Lake Station (Red Line)
- State/Lake Station



Steve Schneider
Vice Chairman
+1 312 424 8119
steve.schneider@cushwake.com

Andy Heymann
Senior Director
+1 312 424 8048
andrew.heyman@cushwake.com

Presley Norby
Associate
+1 312 338 7064
presley.norby@cushwake.com

