

# STORY ROAD LOGISTICS CENTER

# FOR LEASE

750 STORY ROAD, SAN JOSE, CA

71,219 SF CLASS A INDUSTRIAL



 CLARION PARTNERS

  
GO  
INDUSTRIAL

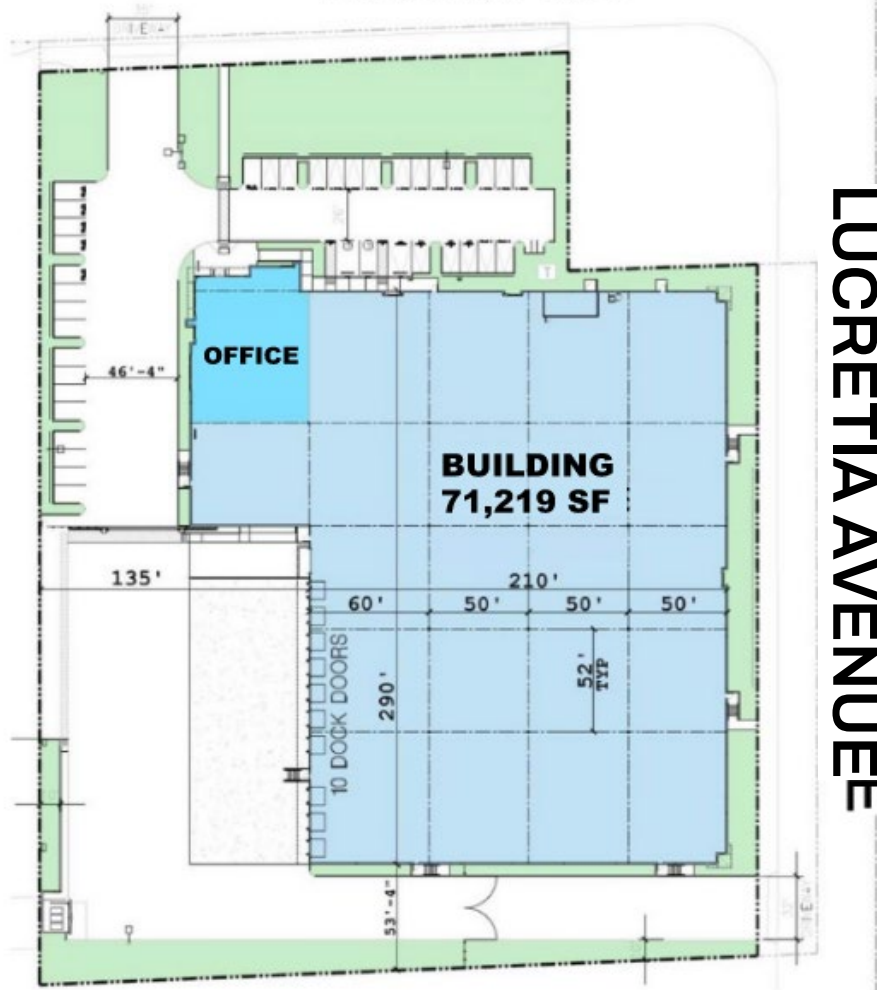
 CUSHMAN &  
WAKEFIELD

FRED EDER  
408.489.2263  
[fred.eder@cushwake.com](mailto:fred.eder@cushwake.com)  
LIC #00949342

# SITE PLAN, BUILDING & PROPERTY HIGHLIGHTS

STORY RD

STORY RD



## PROPERTY & BUILDING FEATURES

- 71,219 SF
- ±3.63 Acres
- ± 6,100 SF of Office (Two Story)
- 32' Clear Height
- 60' Speed Bay
- 50' x 52' Column Spacing
- 10 – 9'x12' Dock Doors
- 1 – 12'x12' Grade Level Doors
- 135' Truck Court
- Private, Fenced Truck Entrance with Lighted Truck Court
- 6" Thick Floor Slab
- 36 Auto Stalls
- ESFR Sprinkler System
- 3,000 Amps 277/480 Volts
- Traffic Volume:
  - Story Road: ± 25,918
  - Lucretia Avenue: ± 10,000






# NEAR BY COMPANIES AND AMENITIES



87

87

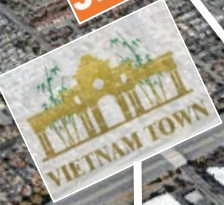
 **NORMAN Y. MINETA SAN JOSE INTERNATIONAL AIRPORT**

 **DOWNTOWN SAN JOSE**

**SAN JOSE MCENERY CONVENTION CENTER**



Legacy Transportation Services



Foundation Building Materials

**STORY ROAD**

Acosta Sheet Metal Manufacturing

Air Systems Inc

## AIRPORTS

SAN JOSE (SJC)	6 miles
OAKLAND (OAK)	37 miles
SAN FRANCISCO (SFO)	37 miles

## HIGHWAYS

HWY-280	0.6 miles
HWY-101	0.7 miles
HWY 680	2 miles
HWY 87	3 Miles

## LOCAL DEMOGRAPHICS

	1 MI RADIUS	5 MI RADIUS
TOTAL POPULATION	31,473	648,736
PERCENT OF POPULATION WITH A BACHELORS OR HIGHER	12.36%	21.32%
TOTAL # OF HOUSEHOLDS	8,268	197,575
AVERAGE INCOME PER HOUSEHOLD	\$115,273	\$136,105



# REGIONAL MAP

## MAJOR MARKETS

DOWNTOWN SAN JOSE	3 miles
CUPERTINO	11 miles
MOUNTAIN VIEW	16 miles
SUNNYVALE	13 miles
TRACY	60 miles
SALINAS	57 miles
PALO ALTO	20 miles
OAKLAND	42 miles
SAN FRANCISCO	51 miles
SACRAMENTO	119 miles
LOS ANGELES	339 miles
RENO, NV	249 miles
SEATTLE, WA	839 miles

## PORTS/FACILITIES

PORT OF OAKLAND	42 miles
OAKLAND INTERMODAL FACILITY	45 miles
PORT OF LA & LONG BEACH	363 miles



**STORY ROAD**

# STORY ROAD LOGISTICS CENTER

# FOR LEASE

750 STORY ROAD, SAN JOSE, CA



OWNER:  CLARION PARTNERS

DEVELOPER:



**For more information on this  
opportunity, please contact:**

**FRED EDER**  
408.489.2263

[fred.eder@cushwake.com](mailto:fred.eder@cushwake.com)

LIC#00949342

